

ALL CHAINAGES ARE MEASURED ALONG THE CENTER LINE OF BISHOP GRANDIN BOULEVARD

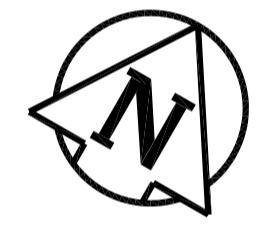
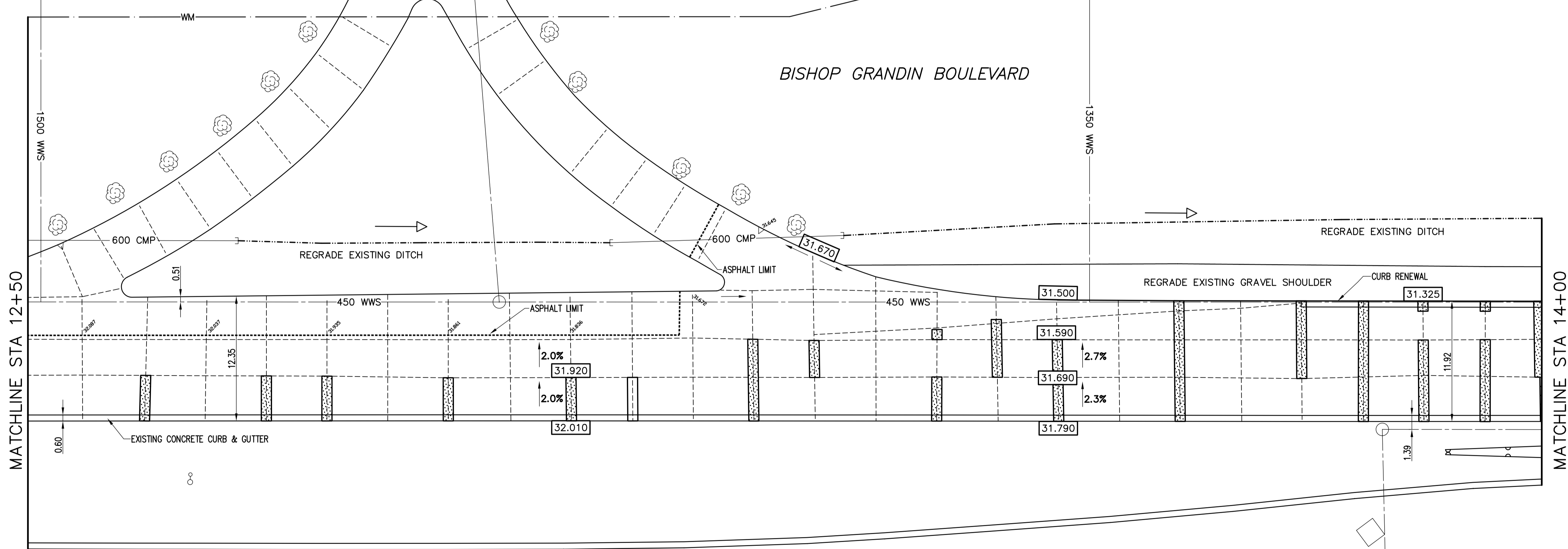
- CONSTRUCTION NOTES**
- 1) CURB AND GUTTER AND CURB REPLACEMENT AS DIRECTED BY THE CONTRACT ADMINISTRATOR
 - 2) ALL STREET RADIUS CURB UNDER 15M RADIUS SHALL BE REPLACED AS MODIFIED BARRIER CURB OR AS DIRECTED BY THE CONTRACT ADMINISTRATOR
 - 3) EXISTING ASPHALT SURFACE TO BE PLANED WITHIN THE CONSTRUCTION LIMITS AS DIRECTED BY THE CONTRACT ADMINISTRATOR
 - 4) PAVEMENT REPAIRS SHOWN ARE ONLY A REPRESENTATIVE SAMPLE OF THE TENDERED QUANTITIES

WARNING

IF POWER EQUIPMENT OR EXPLOSIVES ARE TO BE USED FOR EXCAVATION ON THIS PROJECT THE CONTRACTOR MUST:

- 1) OBTAIN CLEARANCE FROM THE GAS UTILITY PRIOR TO EXCAVATION.
- 2) TAKE PRECAUTION TO AVOID DAMAGE TO GAS UTILITY INSTALLATIONS.

SEE PROVINCIAL REGULATION 210/72 FOR DETAILS



METRIC
WHOLE NUMBERS INDICATE MILLIMETRES
DECIMALIZED NUMBERS INDICATE METRES

BID OPP.# 67-2005

150 mm WM	WATERMAIN	150 mm WM	HYDRO	150 mm WM	WATERMAIN
Hydrant Valve	Hydrant Valve	Hydrant Valve	Swaile Concrete	Hydrant Valve	Hydrant Valve
300 mm LDS	LAND DRAINAGE SEWER	300 mm LDS	LIMIT OF ASPHALT	300 mm LDS	SEWER
250 mm WWS	WASTE WATER SEWER	250 mm WWS	CURB RENEWAL	300 mm LDS	300 mm LDS
Manhole	Manhole	Manhole	Guard Rail	North Gutter	North Gutter
Catch Basin	Catch Basin	Catch Basin	Elevations	South Gutter	South Gutter
Curb Inlet	Curb Inlet	Curb Inlet	Signal	North & Ditch	North & Ditch
Wood Poles	Wood Poles	Wood Poles	Survey Bar	North & Ditch	North & Ditch
Lamp Standard	Lamp Standard	Lamp Standard	Ramp Curb		
Gas	Gas	Gas			
EXISTING	LEGEND - PLAN	PROPOSED	EXISTING	LEGEND - PROFILE	PROPOSED

LOCATION APPROVED UNDERGROUND STRUCTURES

SUPR. U/G STRUCTURES COMMITTEE DATE

NOTE: LOCATION OF UNDERGROUND STRUCTURES AS SHOWN ARE BASED ON THE BEST INFORMATION AVAILABLE, BUT NO GUARANTEE IS GIVEN THAT ALL EXISTING UTILITIES ARE SHOWN OR THAT THE GIVEN LOCATIONS ARE EXACT. CONFIRMATION OF EXISTENCE AND EXACT LOCATION OF ALL SERVICES MUST BE OBTAINED FROM THE INDIVIDUAL UTILITIES BEFORE PROCEEDING WITH CONSTRUCTION.

B.M. GBM 62-033
ELEV. 232.164m

NO.	REVISIONS	DATE	BY

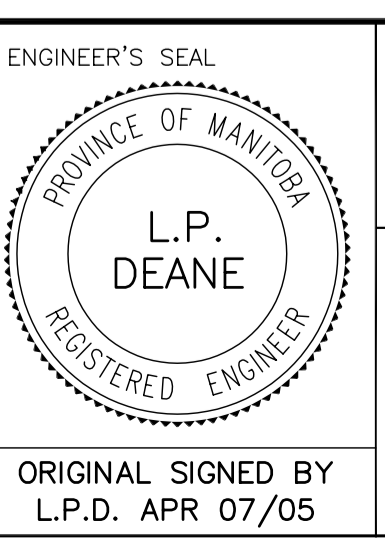
ENGINEERING DIVISION
TECHNOLOGY SERVICES BRANCH
106 - 1155 PACIFIC AVE

DESIGNED BY B.K.
CHECKED BY B.K. A.J.P.

DRAWN BY M.R.J.
APPROVED BY L.P.D.

HOR. SCALE: 1 : 250
VERTICAL: 1 : 20

DATE 2005/04/01



THE CITY OF WINNIPEG
PUBLIC WORKS DEPARTMENT

BISHOP GRANDIN BOULEVARD (WESTBOUND)
FROM ST. ANNE'S ROAD TO DAKOTA STREET
ASPHALT RESURFACING
FROM STA: 12+50
TO STA: 14+00

CITY DRAWING NUMBER SE-05-09
SHEET 9 OF 14
9