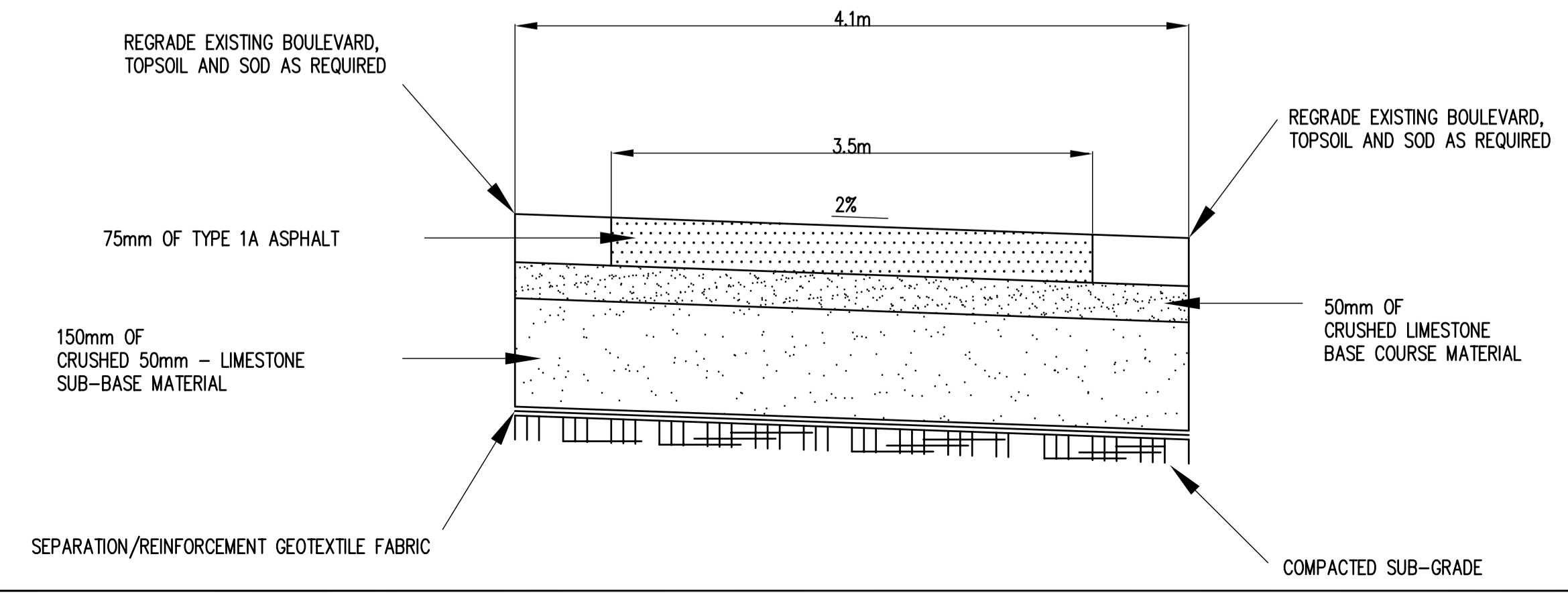




TYPICAL CROSS SECTION OF PROPOSED ASPHALT PEDESTRIAN/CYCLE PATH  
N.T.S.

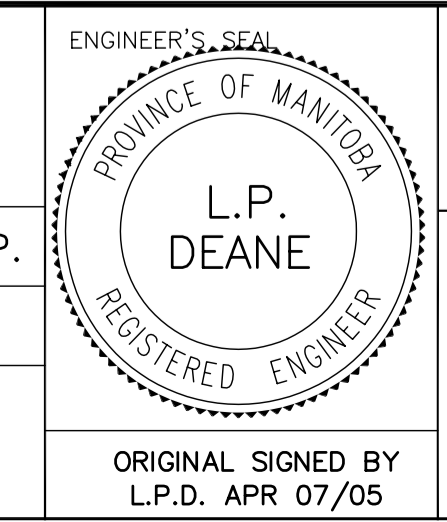


METRIC  
WHOLE NUMBERS INDICATE MILLIMETRES  
DECIMALIZED NUMBERS INDICATE METRES

BID OPP. # 67-2005

LOCATION APPROVED UNDERGROUND STRUCTURES		B.M. ELEV.
SUPR. U/G STRUCTURES	DATE	
COMMITTEE		
NOTE: LOCATION OF UNDERGROUND STRUCTURES AS SHOWN ARE BASED ON THE BEST INFORMATION AVAILABLE. BUT NO GUARANTEE IS GIVEN THAT ALL EXISTING UTILITIES ARE SHOWN OR THAT THE GIVEN LOCATIONS ARE EXACT. CONFIRMATION OF EXISTENCE AND EXACT LOCATION OF ALL SERVICES MUST BE OBTAINED FROM THE INDIVIDUAL UTILITIES BEFORE PROCEEDING WITH CONSTRUCTION.		
NO.	REVISIONS	DATE BY

ENGINEERING DIVISION TECHNOLOGY SERVICES BRANCH 106 - 1155 PACIFIC AVE	
DESIGNED BY M.R.J.	CHECKED BY B.K. A.J.P.
DRAWN BY M.R.J.	APPROVED BY L.P.D.
HOR. SCALE: VERTICAL: N.T.S.	
DATE 2005/04/01	



<b>THE CITY OF WINNIPEG</b> PUBLIC WORKS DEPARTMENT	
<b>BISHOP GRANDIN BOULEVARD (WESTBOUND)</b> FROM <b>ST. ANNES ROAD TO DAKOTA STREET</b> <b>ASPHALT PEDESTRIAN / CYCLE PATH</b>	
CITY DRAWING NUMBER SE-05-14	SHEET 14 OF 14
ORIGINAL SIGNED BY L.P.D. APR 07/05	
14	