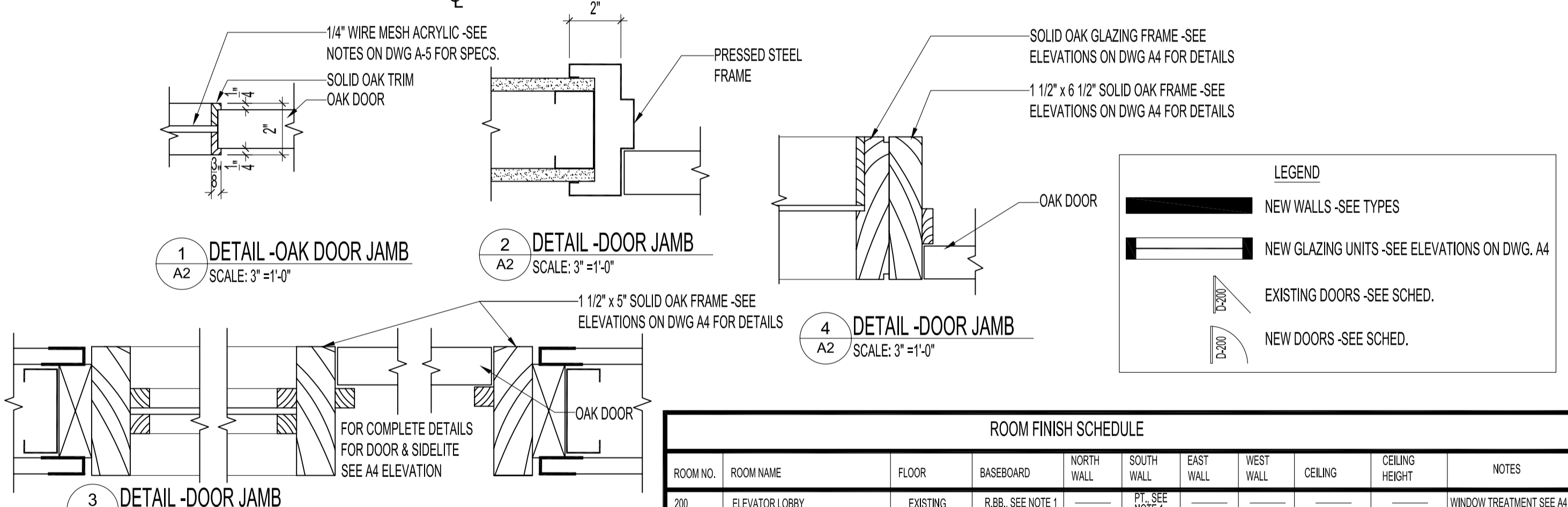
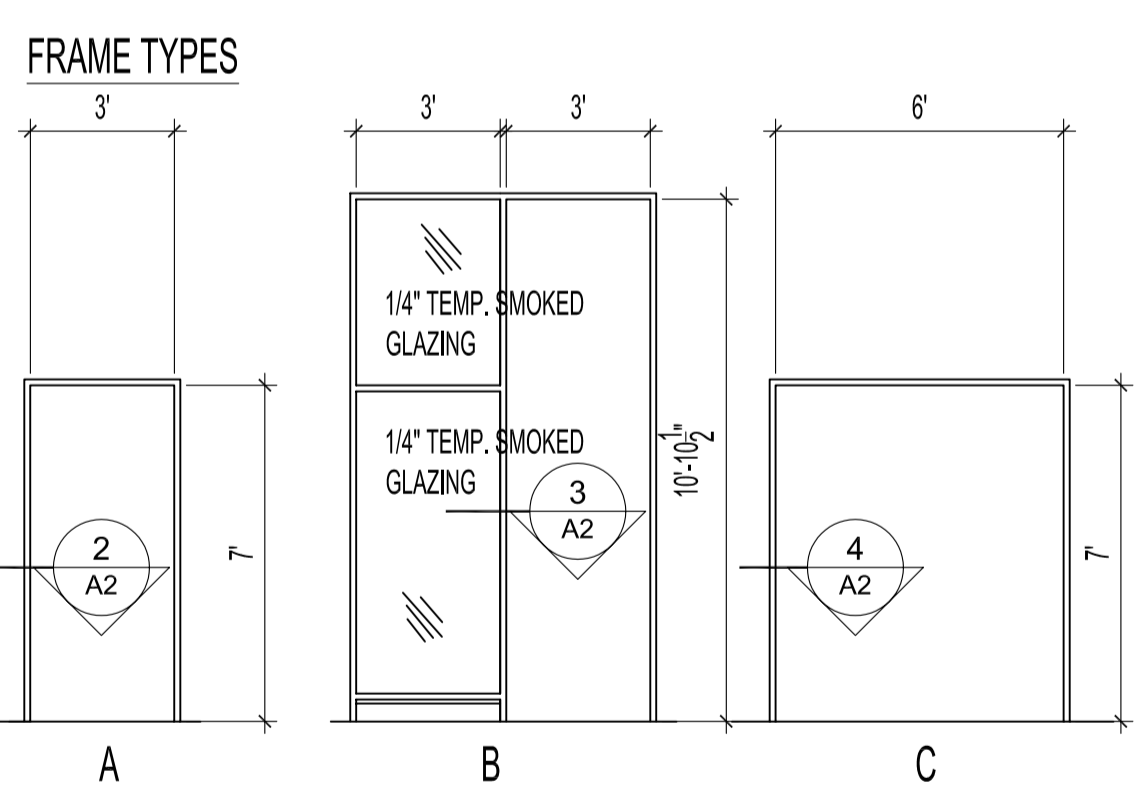
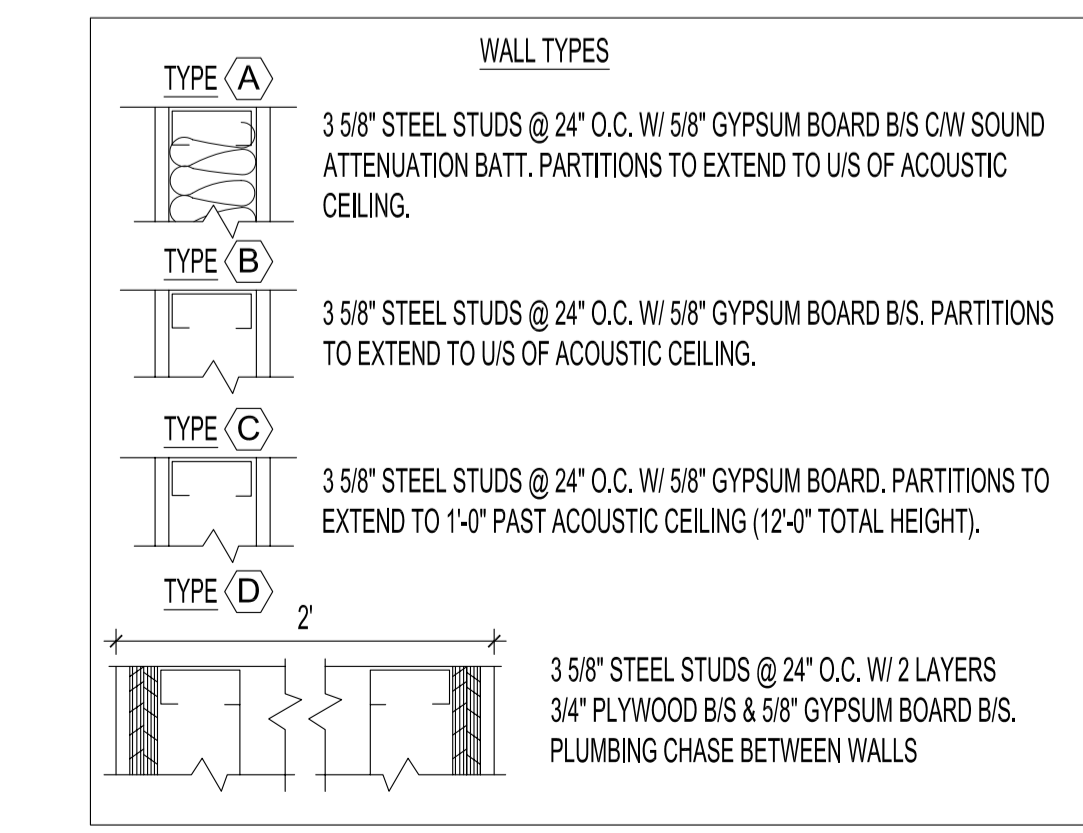
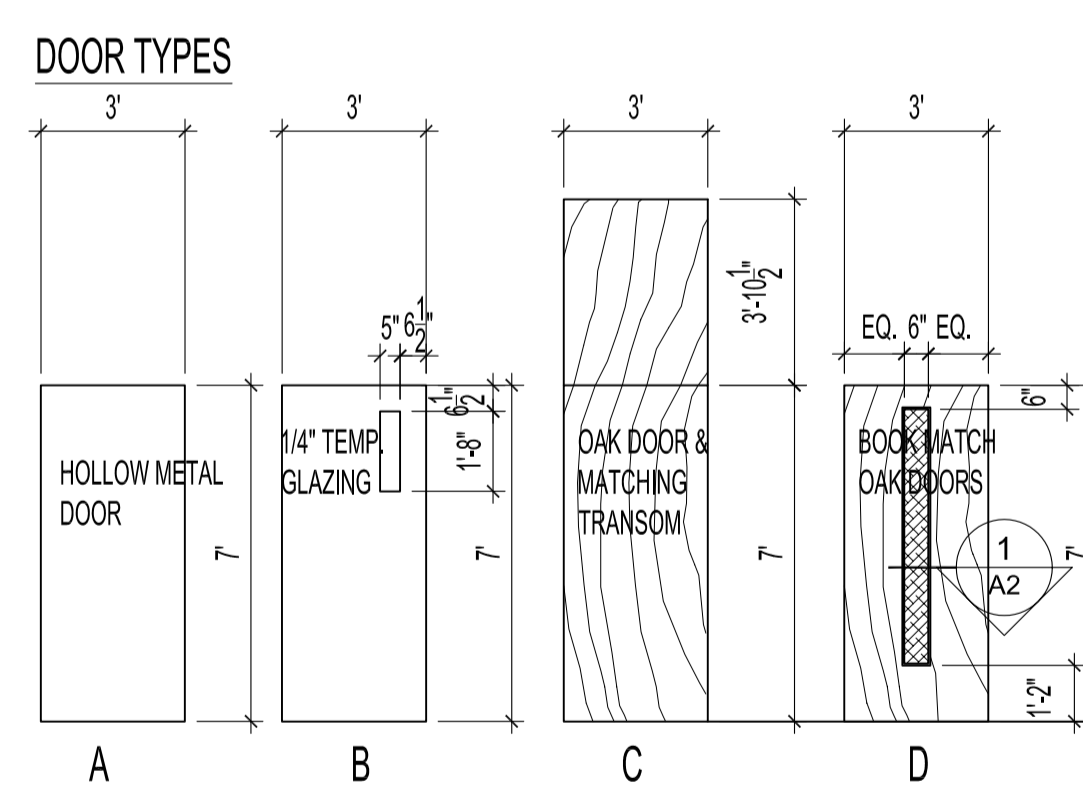


SECOND FLOOR PLAN - RENOVATION
SCALE: 1/8"=1'-0"

- NOTES :**
- ROOM FINISH NOTES:**
1. 4" BLACK RUBBER BASEBOARD & PAINT IS TO BE APPLIED TO NEW WALLS ONLY UNLESS NOTED OTHERWISE.
 2. OFFICE 216 - PAINT ONLY PARTIAL WALL THAT WAS PREVIOUSLY PAINTED WHITE. COLOUR TO MATCH EXISTING FACE BRICK. NATURAL FACE BRICK COLOUR TO REMAIN. DESIGNER TO PROVIDE NEW COLOUR. SEE PLAN FOR LOCATION.
- MISCELLANEOUS ITEMS**
3. AUTOMATIC DOOR & "PUSH BUTTON" WALL MOUNTED RAILS BY NEW ENGLAND ENTRANCES GUIDE RAIL 2 @ #BOW 48" x 36" BRONZE FINISH. PUSH BUTTON LCN#7910-956 OR SIMILAR (SUBMIT SAMPLE FOR APPROVAL). SEE ELECTRICAL RENOVATION DRAWING.
- FIRE RATING**
4. ELEVATOR LOBBY 200 (WEST SIDE) - ACCESS EXISTING MAIL CHUTE. PROVIDE A 2 HOUR FIRE RATING STOP AT THE BOTTOM (TO MAIN FLOOR) & AT THE TOP (TO THE THIRD FLOOR). FILL ALL VOIDS BETWEEN FLOOR ASSEMBLIES W/ APPROVED FIRE-STOP MATERIALS AS PER BUILDING CODES.
 5. ELEVATOR LOBBY 200 (WEST & EAST SIDES) - PROVIDE A 2 HOUR FIRE STOP AT ELECTRICAL CLOSET INTERIORS AT THE BOTTOM (TO MAIN FLOOR) & AT THE TOP (TO THE THIRD FLOOR). FILL ALL VOIDS BETWEEN FLOOR ASSEMBLIES W/ APPROVED FIRE-STOP MATERIALS AS PER BUILDING CODES.

ORIGINAL SEALED BY:
R.K. FOK LI Arch.
Date: 2005.11.15



DOOR SCHEDULE

DOOR No.	TYPE	WIDTH	HEIGHT	THICK.	MATL.	FINISH	FRAME	RATING	HARDWARE CODE	NOTES
D200A	D	2'-3 1/2"	7'-0"	1 3/4"	S.C.WD.	ST.	C	S.W.	ST.	GROUP #1
D200B	B	3'-0"	7'-0"	1 3/4"	H.M.	PT.	A	P.S.	PT.	GROUP #2
D206	EXISTING									
D209	C	3'-0"	7'-0"	1 3/4"	S.C.WD.	ST.	B	S.W.	ST.	GROUP #4
D211	C	3'-0"	7'-0"	1 3/4"	S.C.WD.	ST.	B	S.W.	ST.	GROUP #4
D212	A	3'-0"	7'-0"	1 3/4"	H.M.	PT.	A	P.S.	PT.	GROUP #3
D213	A	3'-0"	7'-0"	1 3/4"	H.M.	PT.	A	P.S.	PT.	GROUP #3
D215A	A	3'-0"	7'-0"	1 3/4"	H.M.	PT.	A	P.S.	PT.	GROUP #4
D215B	A	3'-0"	7'-0"	1 3/4"	H.M.	PT.	A	P.S.	PT.	GROUP #4 - SEE NOTE NO FLOOR STOP REQUIRED
D216	A	3'-0"	7'-0"	1 3/4"	H.M.	PT.	A	P.S.	PT.	GROUP #4
D217	A	3'-0"	7'-0"	1 3/4"	H.M.	PT.	A	P.S.	PT.	GROUP #4
D219	EXISTING									PROVIDE 1' x 1' TRANSFER GRILLE @ BTM.
D220	EXISTING									PROVIDE 1' x 1' TRANSFER GRILLE @ BTM.

ABBREVIATIONS S.C.WD.-SOLID CORE WOOD S.W.-SOLID WOOD M.P.-MATTE POLYURETHANE H.M.-HOLLOW METAL P.S.-PRESSED STEEL PT.-PAINT ST.-STAIN & POLYURETHANE

HARDWARE CODES

GROUP #1 ALL SLAGGE LOCKS TO TAKE BEST LOCK INSERTS) FORMS & SURFACES DOOR PULLS: 2 OF D9534 COLOUR B21 2 PUSH PLATES @ 4" x 15" OIL RUBBED BRONZE FINISH SLAGGE 886P ANSI E2151 FINISH 613 OIL RUBBED BRONZE 2 PR. 4 1/2" x 4" STANLEY HINGES #C8179, 613 (108) FINISH 2 GALLERY HARDWARE FLUSH BOLTS 401 @ TOP & BTM. W/ 613 (108) FINISH KICKPLATES BIS 80A, 12" x 34" MS W/ 108 FINISH

GROUP #2 (ALL SLAGGE LOCKS TO TAKE BEST LOCK INSERTS) SLAGGE COBRA LOCK #KCS196 W/ LEVER HANDLE VON DUBRN TOUCHBAR EXT DEVICE 313 W/ US108 FINISH 1 1/2" PR. 4 1/2" x 4" STANLEY HINGES #C8179, 613 (108) FINISH LCN CLOSER 402 W/ 59 FINISH BHM 640 KICKPLATES BIS 80A, 12" x 34" MS W/ 108 FINISH STANLEY FLOOR STOP #B1123X, 613 (108) FINISH

GROUP #3 BEST: 73K-AM-14D-STK-613 1 1/2" PR. 4 1/2" x 4" STANLEY HINGES #C8179, 613 (108) FINISH STANLEY FLOOR STOPS #B1123X, 613 (108) FINISH

GROUP #4 BEST LOCK W/ STOP CORE: 93K-7-R-16D-STK-613 1 1/2" PR. 4 1/2" x 4" STANLEY HINGES #C8179, 613 (108) FINISH STANLEY FLOOR STOPS #B1123X, 613 (108) FINISH

ROOM FINISH SCHEDULE

ROOM NO.	ROOM NAME	FLOOR	BASEBOARD	NORTH WALL	SOUTH WALL	EAST WALL	WEST WALL	CEILING	CEILING HEIGHT	NOTES
200	ELEVATOR LOBBY	EXISTING	R.B.B. SEE NOTE 1		PT. SEE NOTE 1					WINDOW TREATMENT SEE A4
201	WEST STARWELL		EXISTING							
202	MENS WASHROOM		EXISTING							
203	JANITOR		EXISTING							
204	WOMENS WASHROOM		EXISTING							
205	EAST STARWELL		EXISTING							
206	CORRIDOR		EXISTING							
207	RECEPTION WAITING		R.B.B. SEE NOTE 1							WINDOW TREATMENT SEE A4
208	GENERAL OFFICE		R.B.B. SEE NOTE 1	PT. SEE NOTE 1			PT. SEE NOTE 1	AC. TILE	11'-0"	WINDOW TREATMENT SEE A4
209	OFFICE		R.B.B. SEE NOTE 1	PT.		PT.		AC. TILE	11'-0"	WINDOW TREATMENT SEE A4
210	GENERAL OFFICE		R.B.B. SEE NOTE 1	PT. SEE NOTE 1	PT. SEE NOTE 1	PT.	PT. SEE NOTE 1	AC. TILE	11'-0"	WINDOW TREATMENT SEE A4
211	OFFICE		R.B.B. SEE NOTE 1		PT.	PT.		AC. TILE	11'-0"	WINDOW TREATMENT SEE A4
212	MEETING ROOM		R.B.B. SEE NOTE 1		PT.	PT.	PT.	AC. TILE	11'-0"	
213	PARADE ROOM		R.B.B. SEE NOTE 1		PT.	PT.	PT.	AC. TILE	11'-0"	WINDOW TREATMENT SEE A4
214	CORRIDOR		R.B.B. SEE NOTE 1	PT.	PT.			AC. TILE	11'-0"	
215	ELECTIONS - CITY CLERKS		R.B.B. SEE NOTE 1		PT.	PT.	PT.	AC. TILE	11'-0"	WINDOW TREATMENT SEE A4
216	OFFICE		R.B.B. SEE NOTE 1	PT. SEE NOTE 2		PT.	PT.	AC. TILE	11'-0"	
217	MEETING ROOM		R.B.B. SEE NOTE 1	PT.	PT.	PT.	PT.	AC. TILE	11'-0"	
218	CORRIDOR		R.B.B. SEE NOTE 1	PT.						
219	FEMALE H/C WASHROOM		R.B.B. SEE NOTE 1	PT.	PT.	PT.	PT.			
220	MALE H/C WASHROOM		R.B.B. SEE NOTE 1	PT.	PT.	PT.	PT.			
221	WIRING ROOM									

ABBREVIATIONS PT.-PAINT AC.T.-ACOUSTIC TILE R.B.B.-RUBBER BASEBOARD

NO. REVISION/DESCRIPTION BY DATE

SEALS

DRAWN BY MMK **CHECKED BY** USER **APPROVED** USER APPROVAL
DATE 2005.11.15

CITY OF WINNIPEG
PLANNING, PROPERTY & DEVELOPMENT DEPARTMENT
CIVIC ACCOMMODATIONS DIVISION
300 - 65 GARRY ST. R3C 4K4

PROJECT
ADMINISTRATION BUILDING
SECOND FLOOR RENOVATIONS
CONVERSION TO OFFICE AREA
510 MAIN STREET

SHEET TITLE
SECOND FLOOR PLAN
RENOVATION & SCHEDULES

SCALE AS NOTED **PROJECT NO.** 2004-180-06 **SHEET NO.** A2

DRAWING SHEET SIZE: A1 (841mm x 594mm) PLOT 1:1