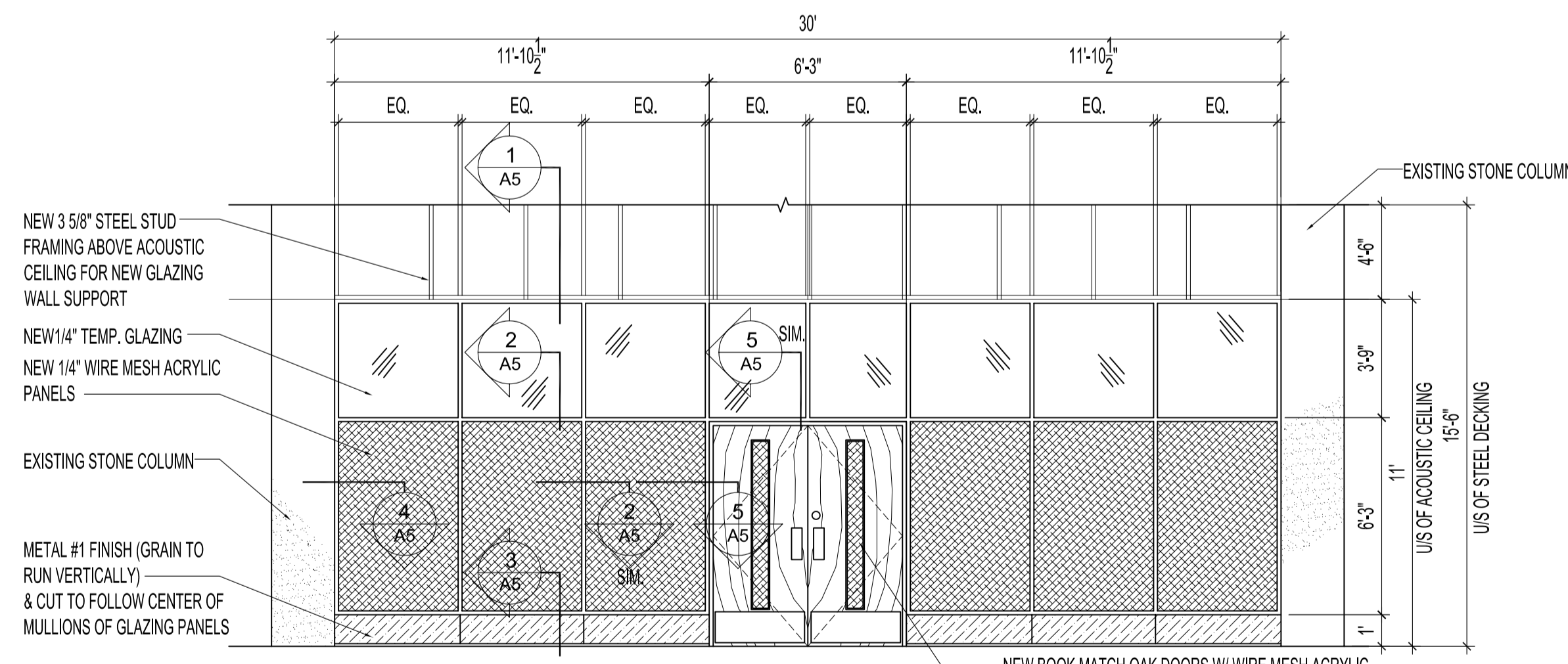


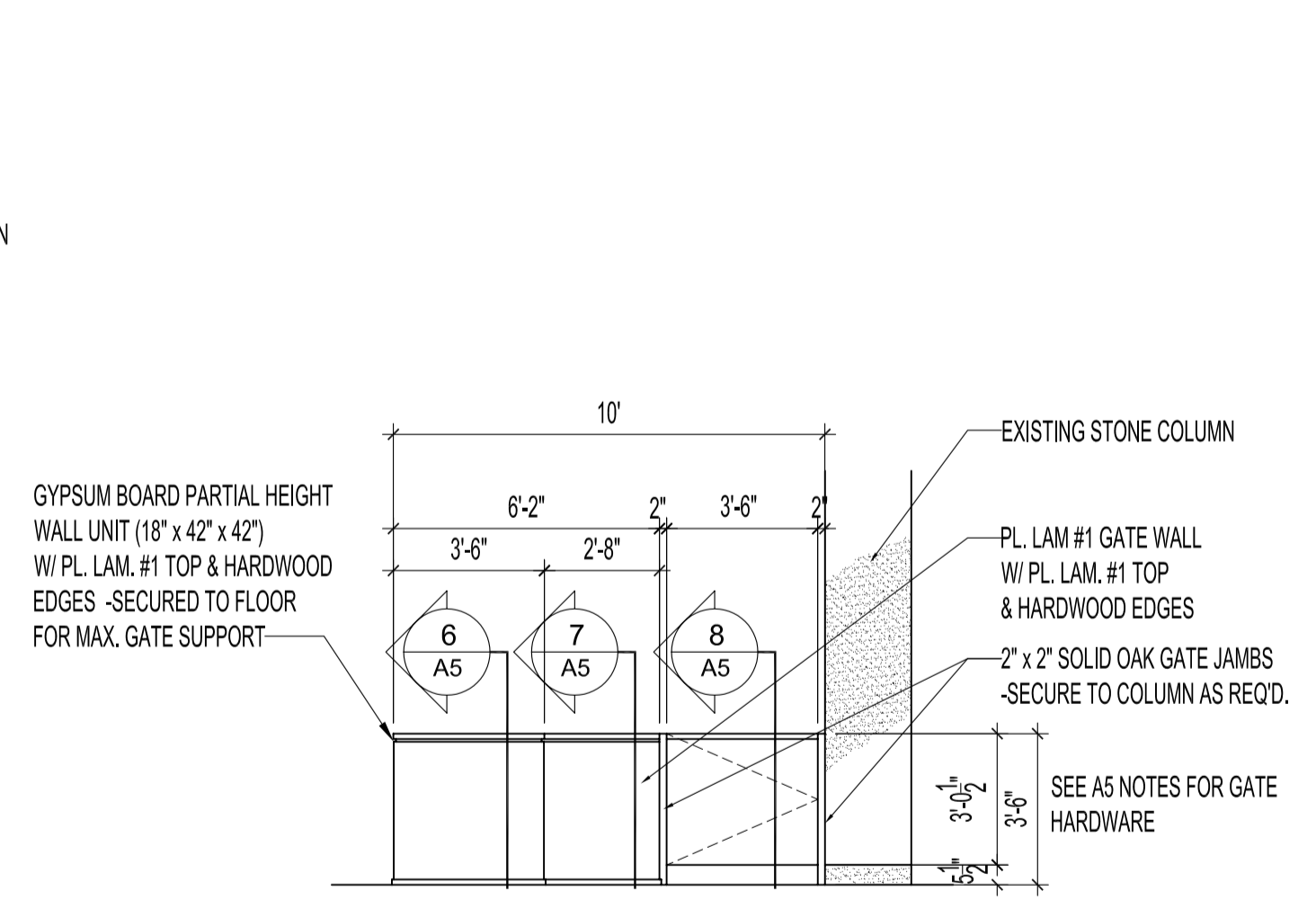
SECOND FLOOR PLAN - FURNITURE & MILLWORK  
 SCALE: 1/8"=1'-0"

- NOTES :**
- WINDOW TREATMENT FINISHES:**
- NOTE: ALL WINDOW SIZES ARE APPROXIMATED AND ARE TO BE CONFIRMED ON SITE.
- PROVIDE HORIZONTAL MICRO BLINDS FOR OFFICES 209 & 210 BY NEW VIEW BLINDS #213 "WHITE GOLD" TO FIT INSIDE GLAZING STOPS OF LOWER GLAZED SIDELITES. (APPROX. SIZE 2 @ 2'-10 1/2" x 6'-2")
  - PROVIDE MECO SHADE M5 CHAIN OPERATED ROLLER BLINDS W/ DARK BRONZE FASCIA & BROWN HARDWARE. SEWN HEMBAR AS DISTRIBUTED BY VBG DISTRIBUTORS 668 1596. ECOVEIL, COLOUR #1004 "BLACK / BROWN", INSTALLED PER MANUFACTURER'S INSTRUCTIONS. APPROXIMATE WIDTHS SHOWN ON DWG. & LENGTHS ARE APPROX. 10'-7 1/2".
  - RELOCATED GLAZING UNIT (BETWEEN RECEPTION / WAITING 207 & CORRIDOR 206). PROVIDE SANDBLASTED TYPE WINDOW FILM ON GLASS BY FUTURE TINT & STRIPE 3M FROSTED GOLD. APPROX. SIZE 21'-2" x 11'-0". CUT IN PATTERN TO FOLLOW.

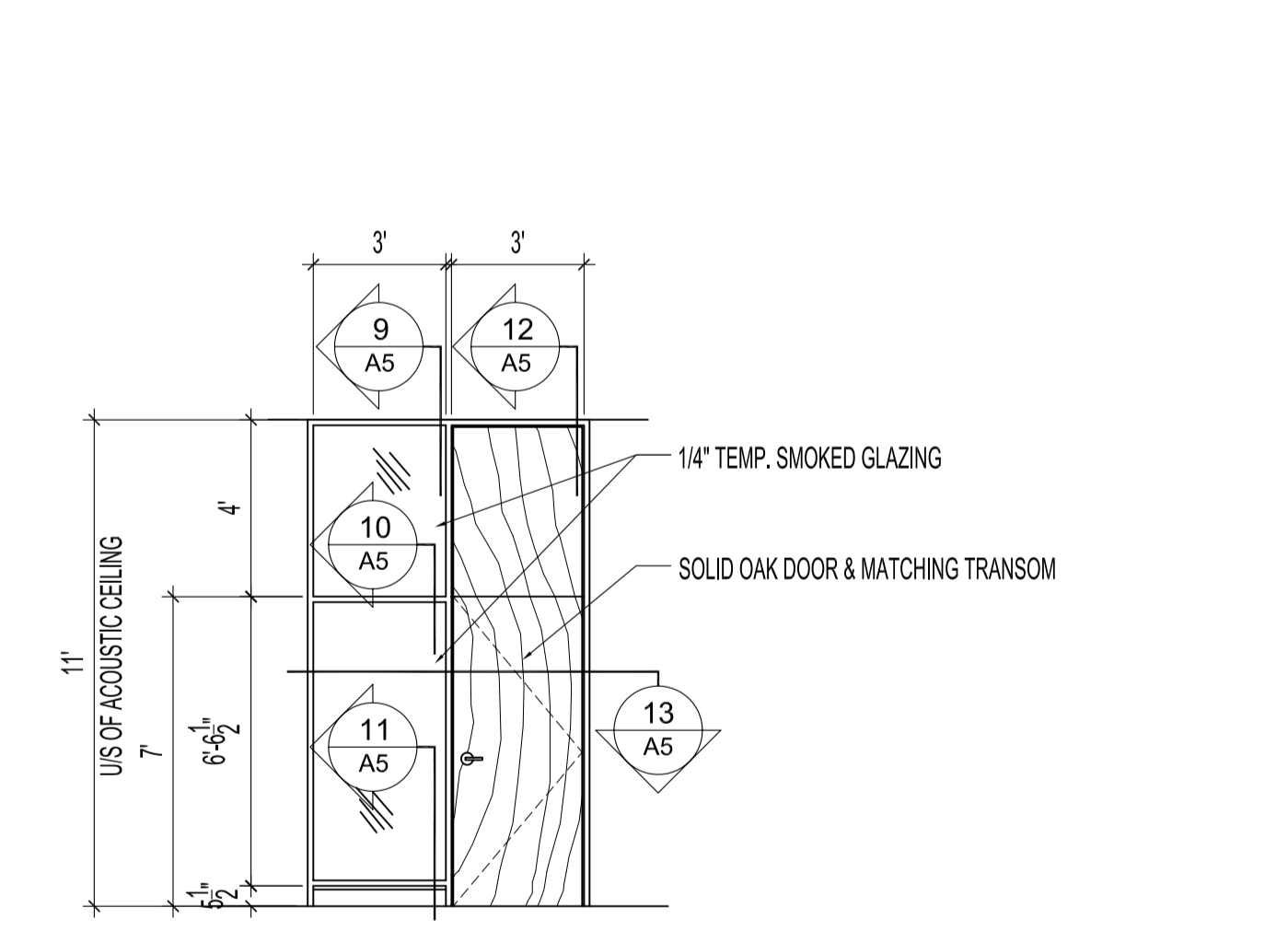
ORIGINAL SEALED BY:  
 R.K. FOK LI Arch.  
 Date: 2005.11.15



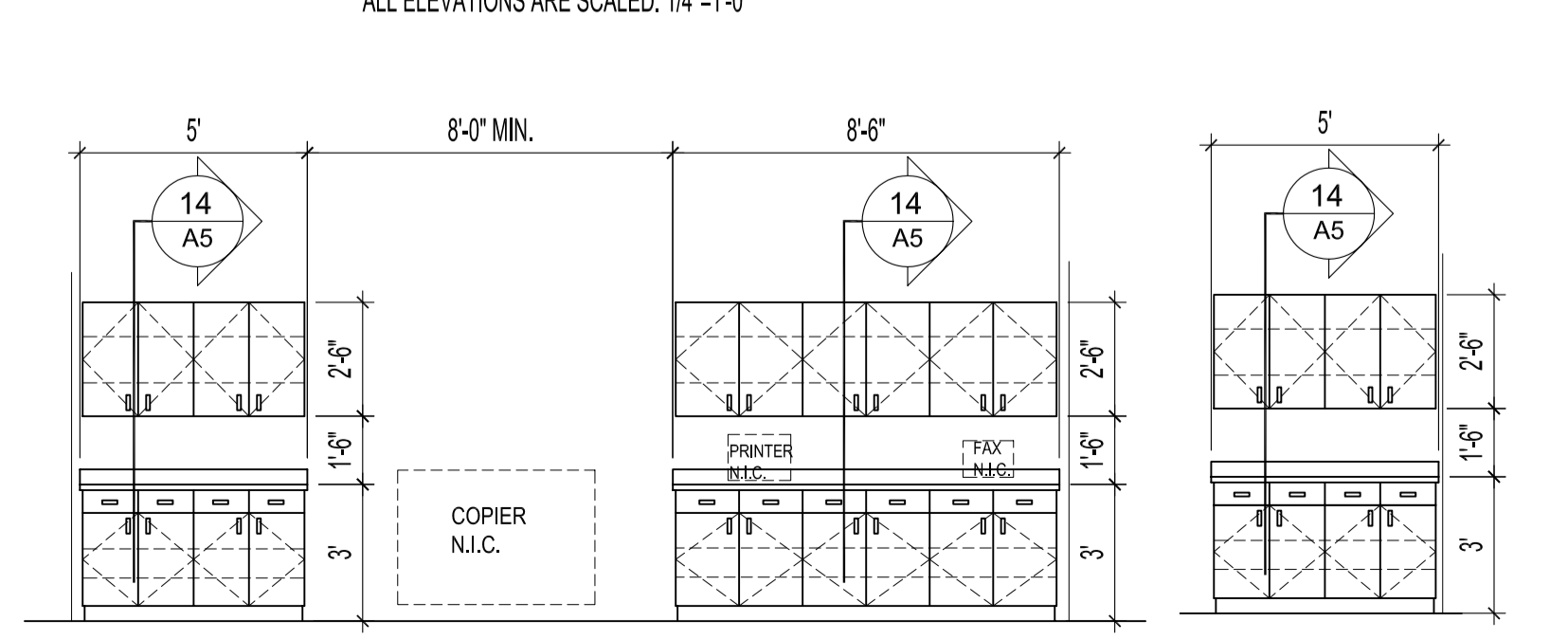
ELEVATION "A" ELEVATOR LOBBY 200 & RECEPTION / WAITING 207  
 ALL ELEVATIONS ARE SCALED: 1/4"=1'-0"



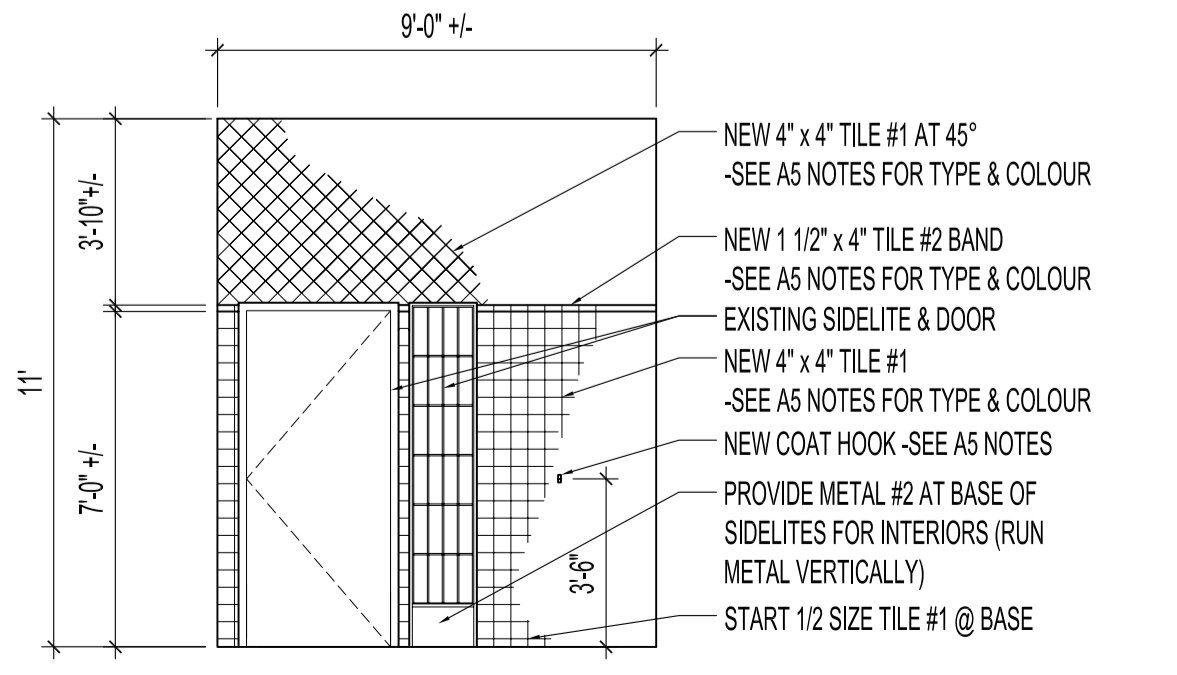
ELEVATION "B" RECEPTION / WAITING 207



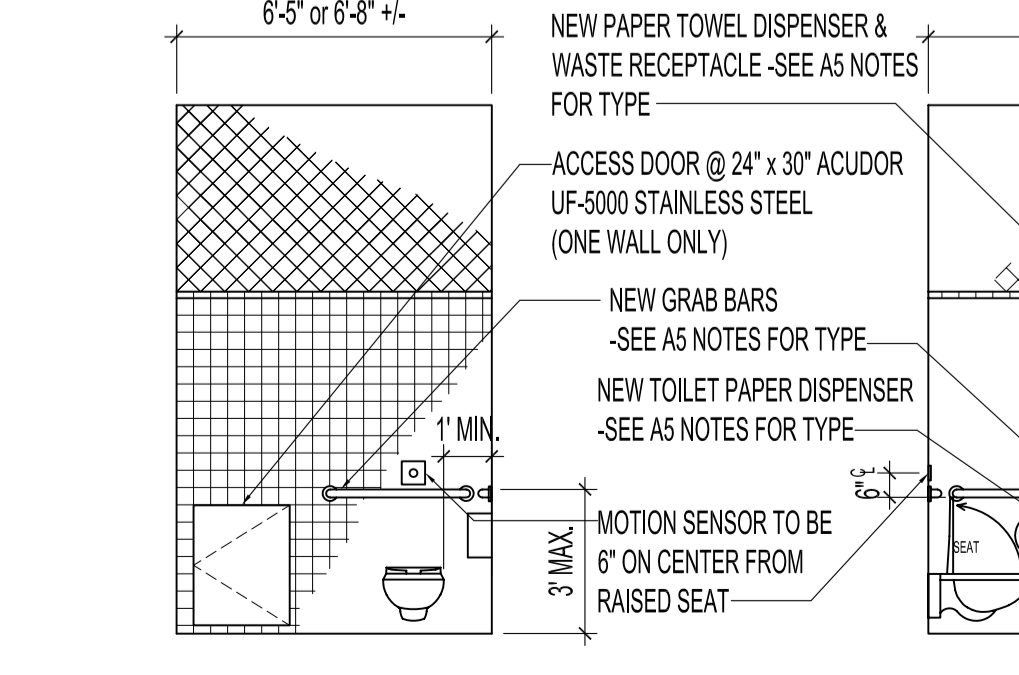
ELEVATION "C" OFFICES 209 & 211



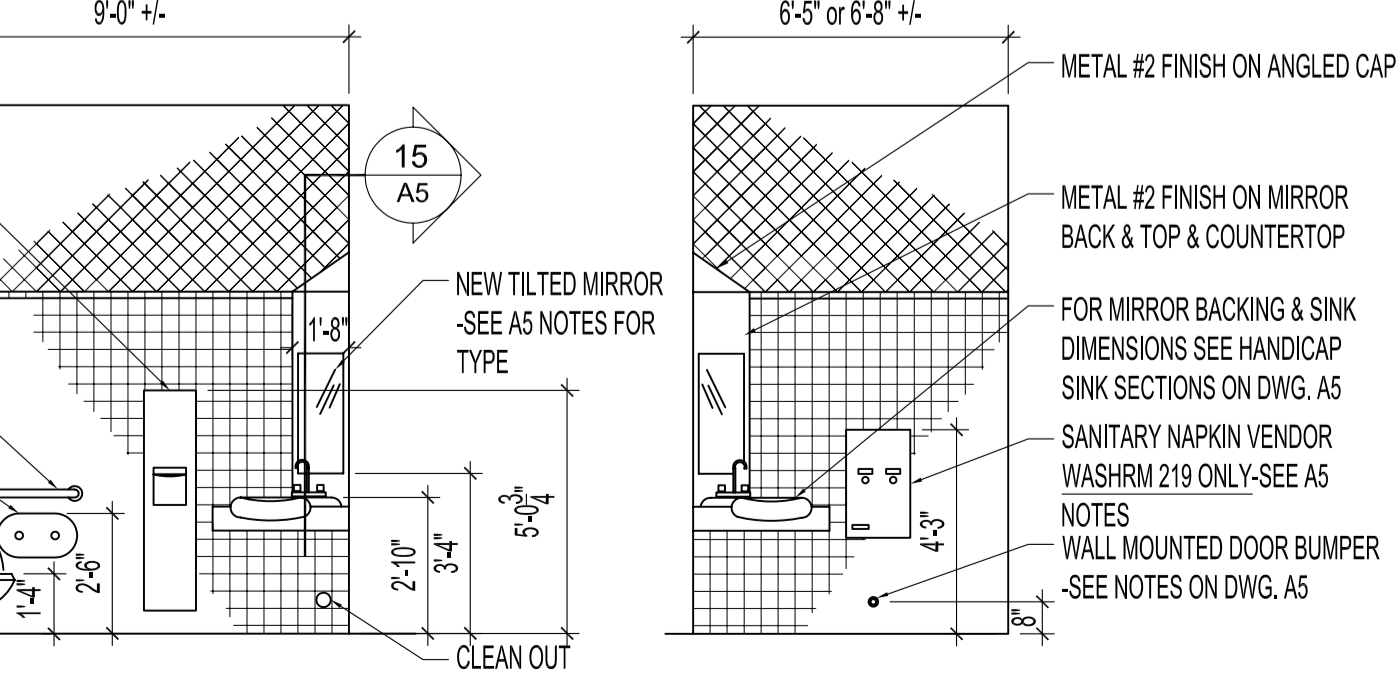
ELEVATION "D" GENERAL OFFICE 210



ELEVATION "E" CORRIDOR 214



ELEVATION "F" WASHROOMS 219 & 220



ELEVATION "G"

NO.	REVISION/DESCRIPTION	BY	DATE
SEALS			
DRAWN BY	MMK	CHECKED BY	APPROVED
DATE	2005.11.15	USER	APPROVAL

CITY OF WINNIPEG  
 PLANNING, PROPERTY & DEVELOPMENT DEPARTMENT  
 CIVIC ACCOMMODATIONS DIVISION  
 300 - 65 GARRY ST. R3C 4K4

PROJECT  
 ADMINISTRATION BUILDING  
 SECOND FLOOR RENOVATIONS  
 CONVERSION TO OFFICE AREA  
 510 MAIN STREET

SHEET TITLE  
 SECOND FLOOR PLAN  
 FURNITURE & MILLWORK  
 & ELEVATIONS

SCALE	PROJECT NO.	SHEET NO.
AS NOTED	2004-180-06	A4