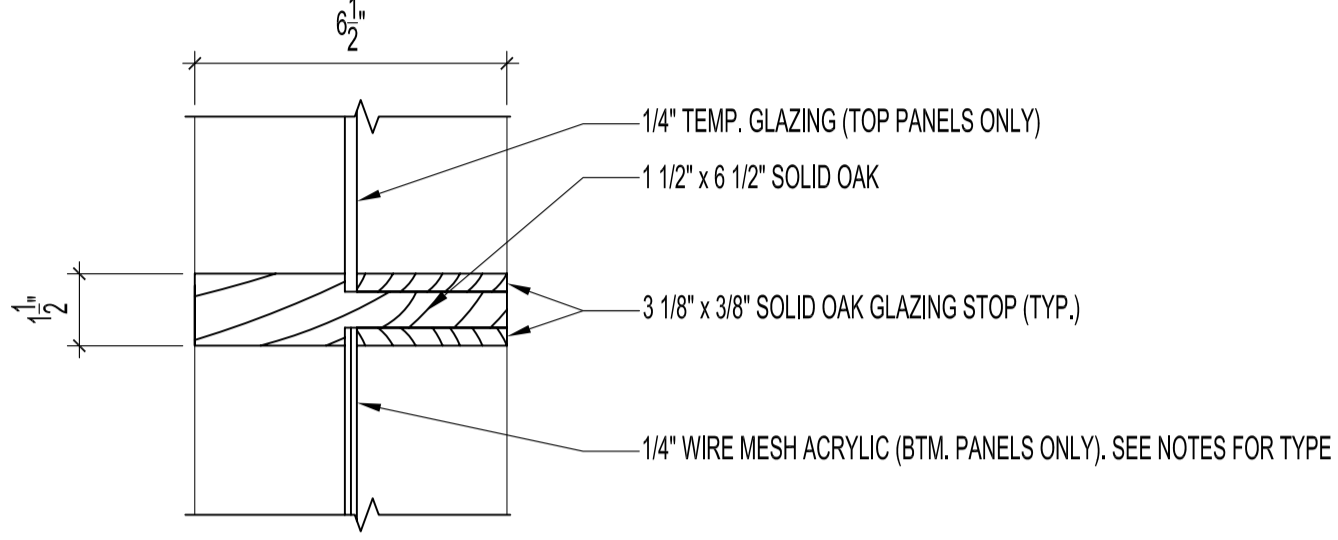
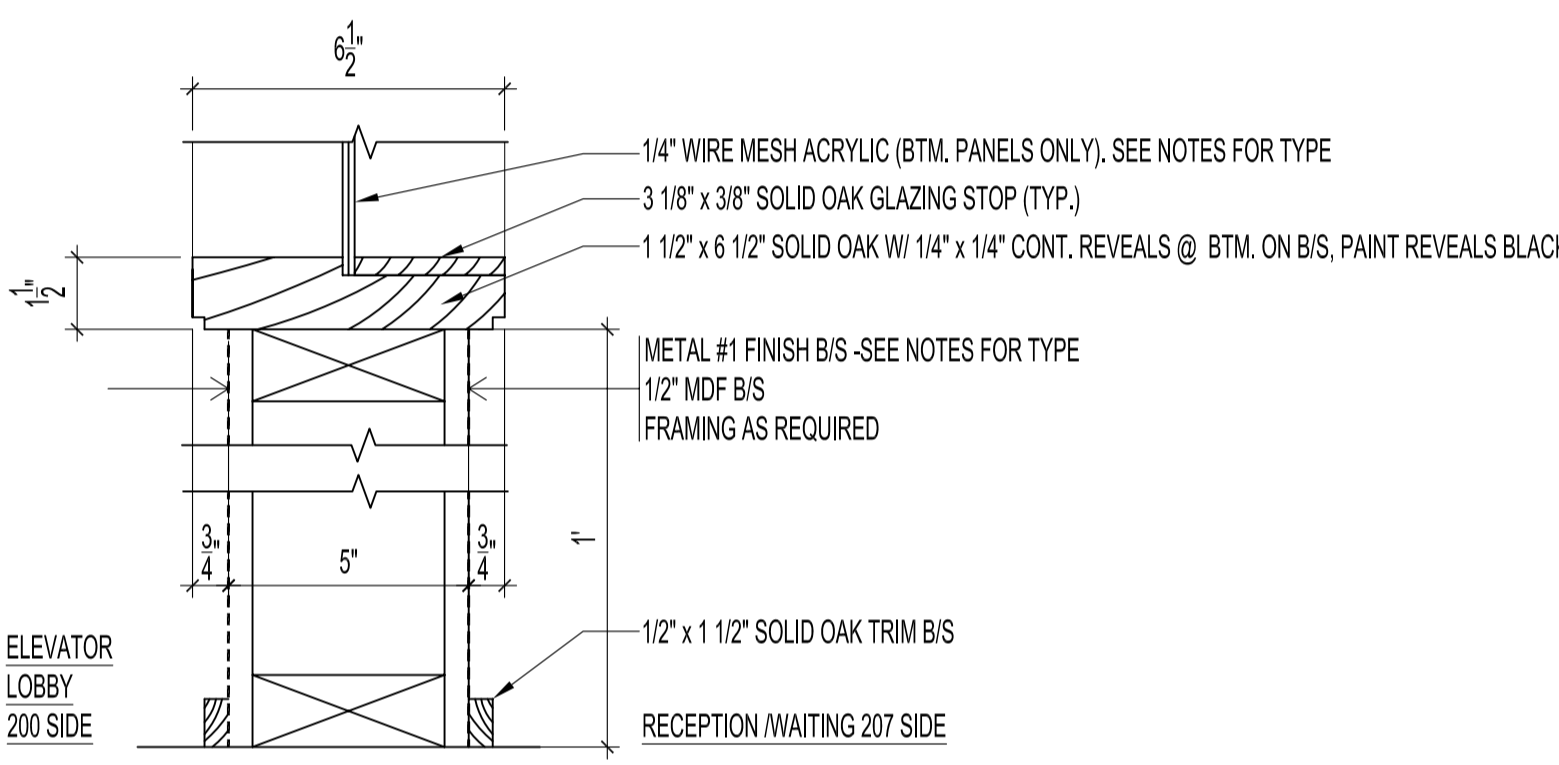


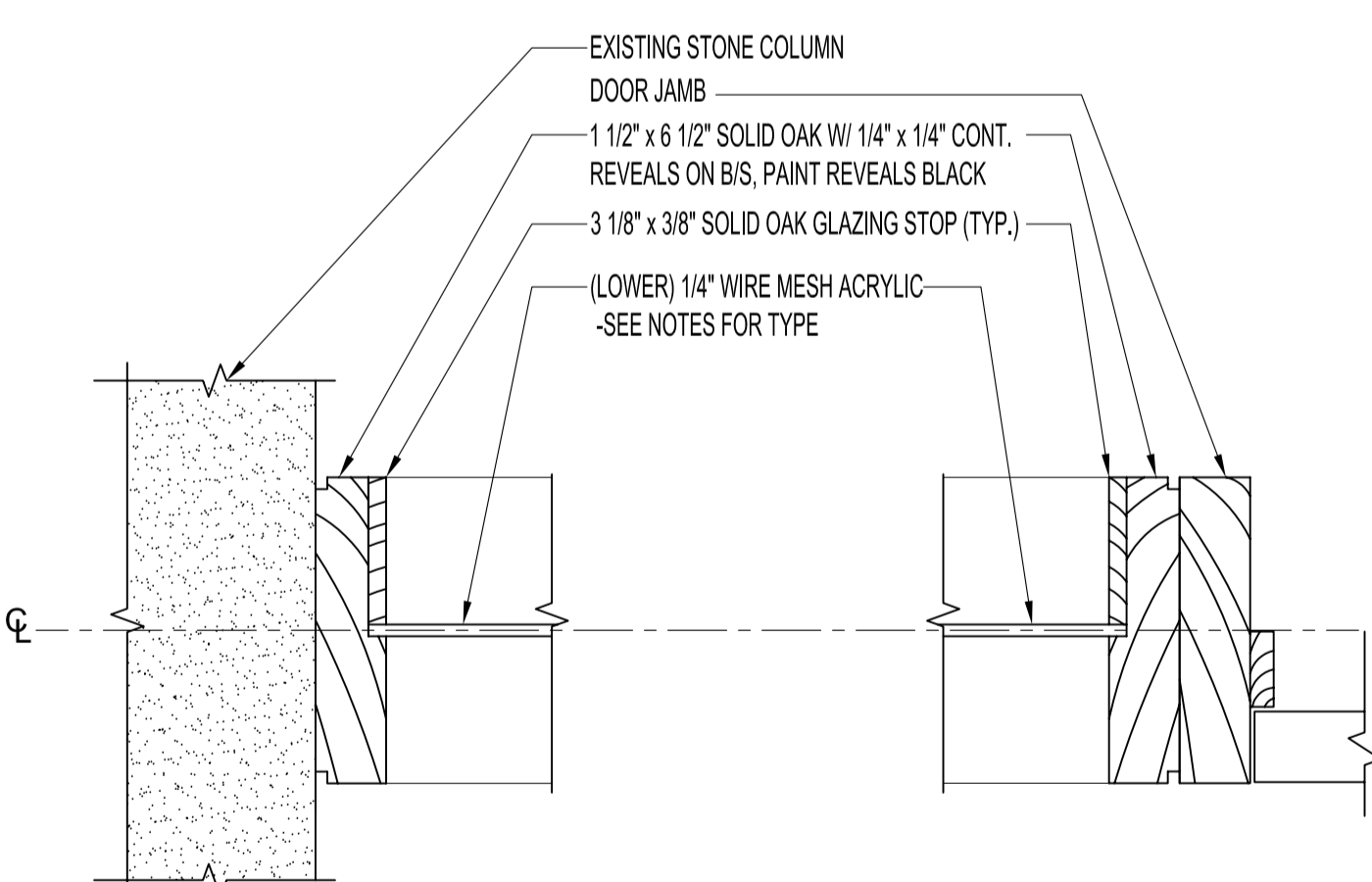
1 SECTION- HEADER JAMB
 A5 SCALE: 3' = 1'-0"



2 SECTION- CENTER JAMB
 A5 SCALE: 3' = 1'-0"

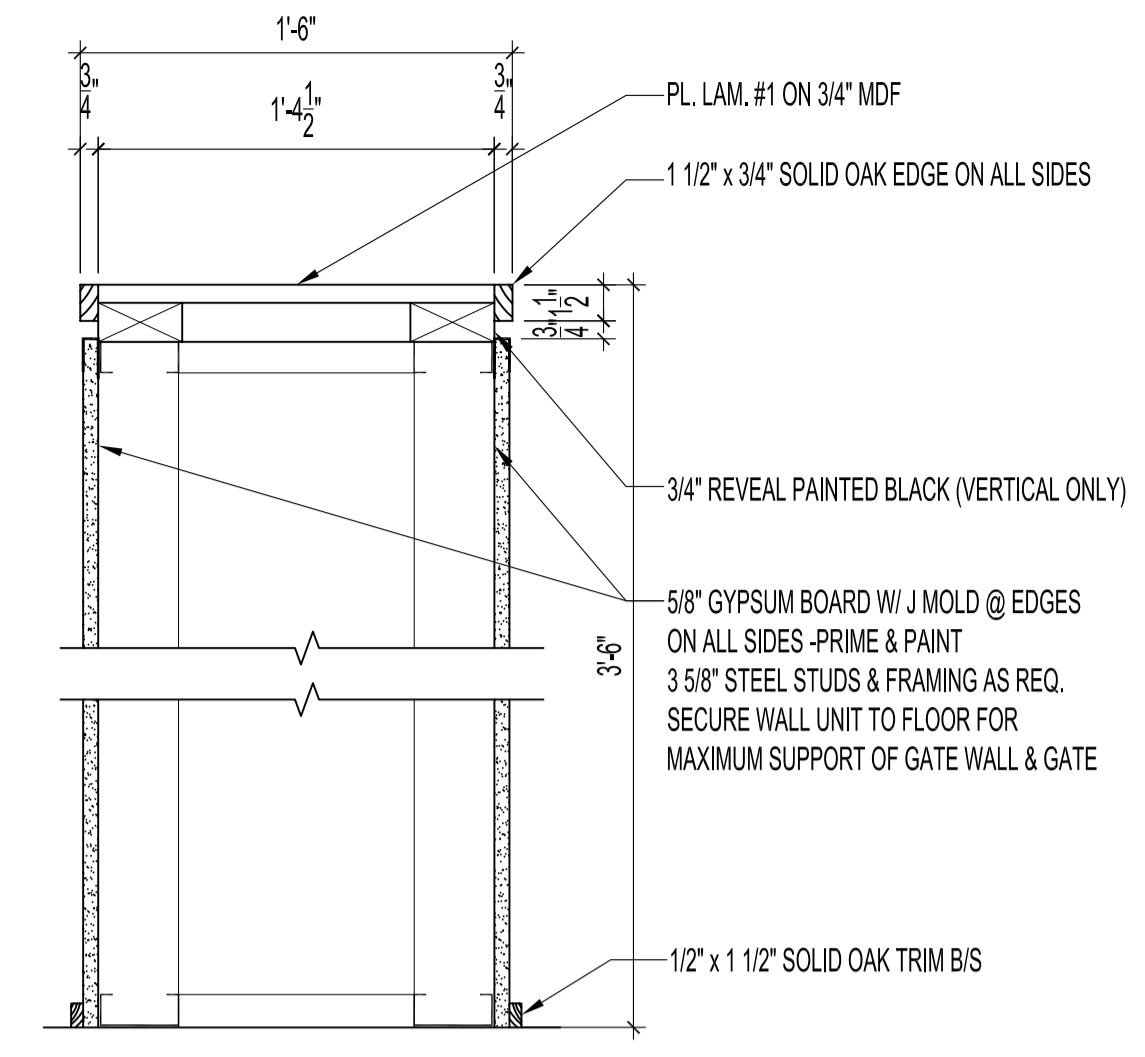


3 SECTION- BASE JAMB
 A5 SCALE: 3' = 1'-0"

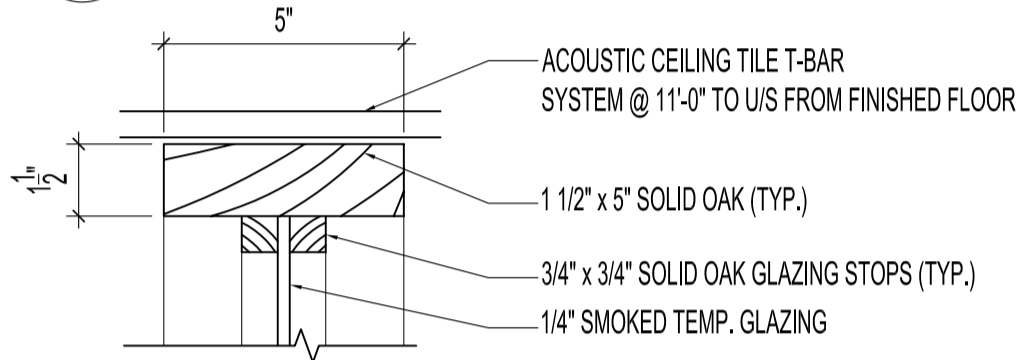


4 SECTION- END JAMB
 A5 SCALE: 3' = 1'-0"

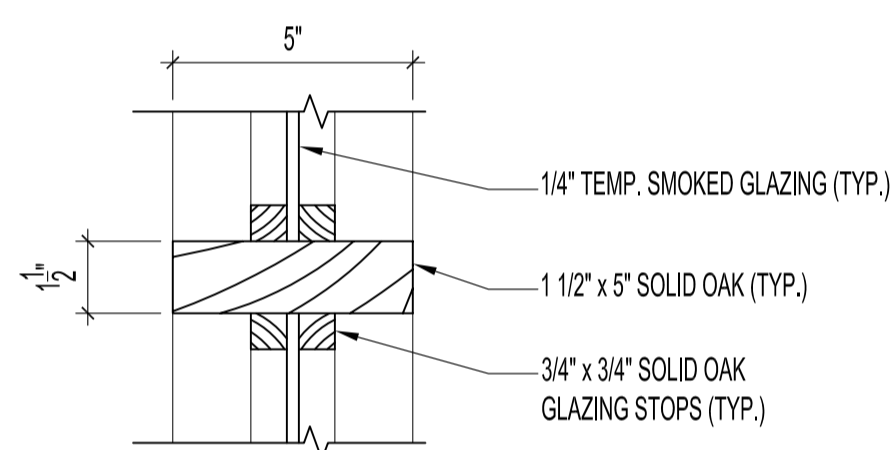
5 SECTION- DOOR JAMB
 A5 SCALE: 3' = 1'-0"



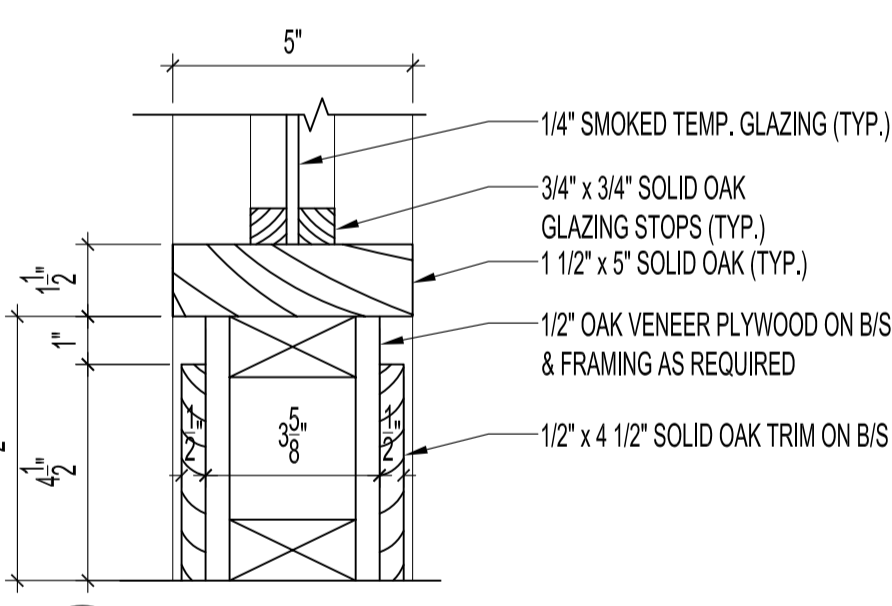
6 SECTION- PARTIAL HEIGHT WALL
 A5 SCALE: 1 1/2' = 1'-0"



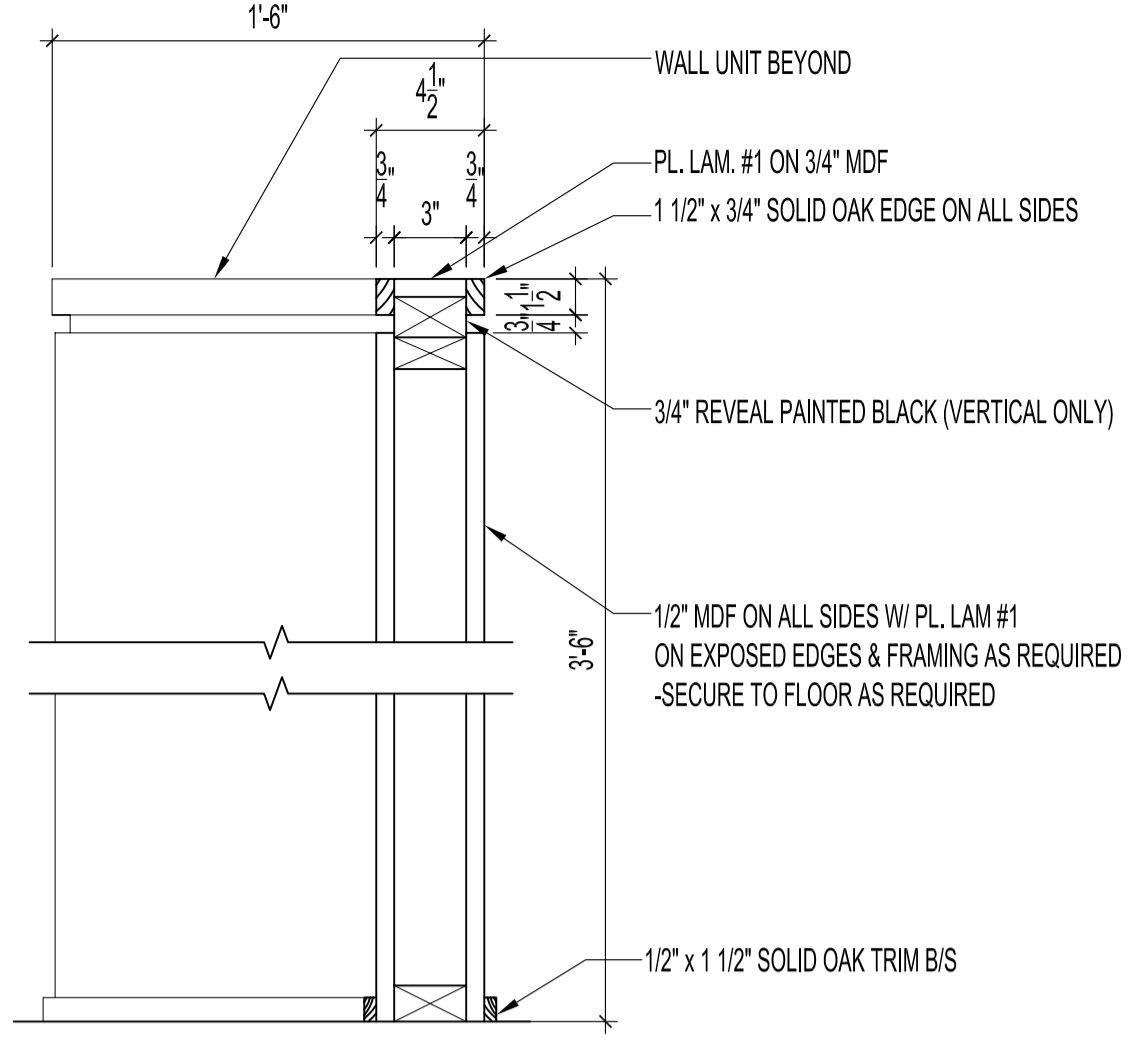
9 SECTION- OFFICE HEADER
 A5 SCALE: 3' = 1'-0"



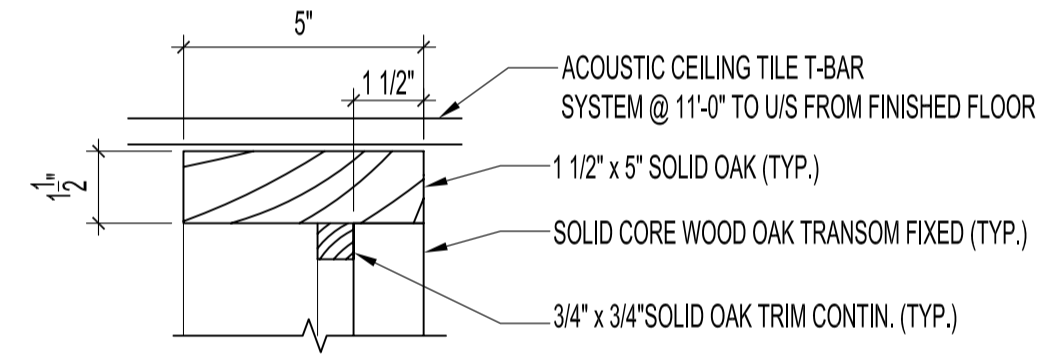
10 SECTION- OFFICE CENTRE JAMB
 A5 SCALE: 3' = 1'-0"



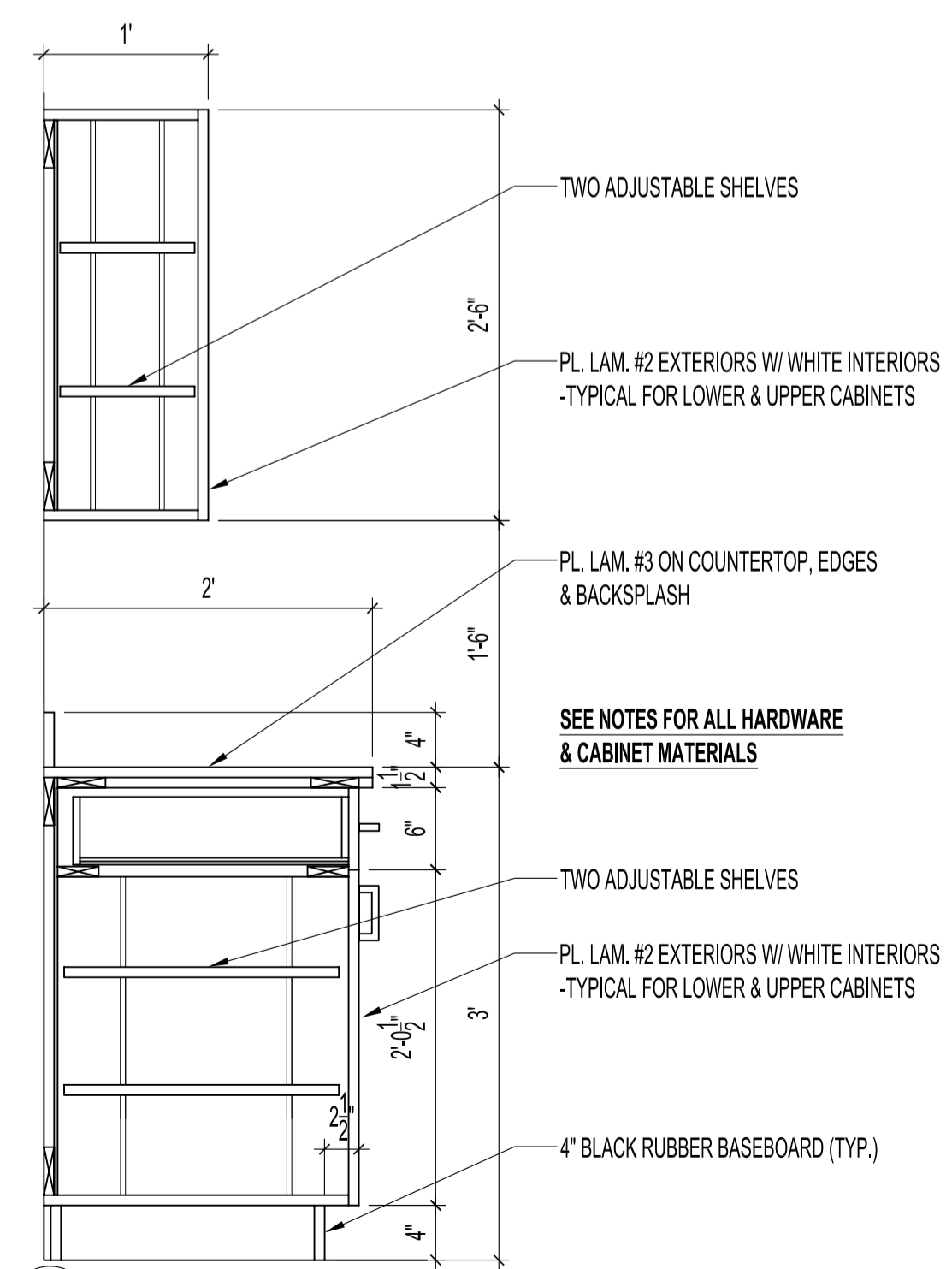
11 SECTION- OFFICE BASE JAMB
 A5 SCALE: 3' = 1'-0"



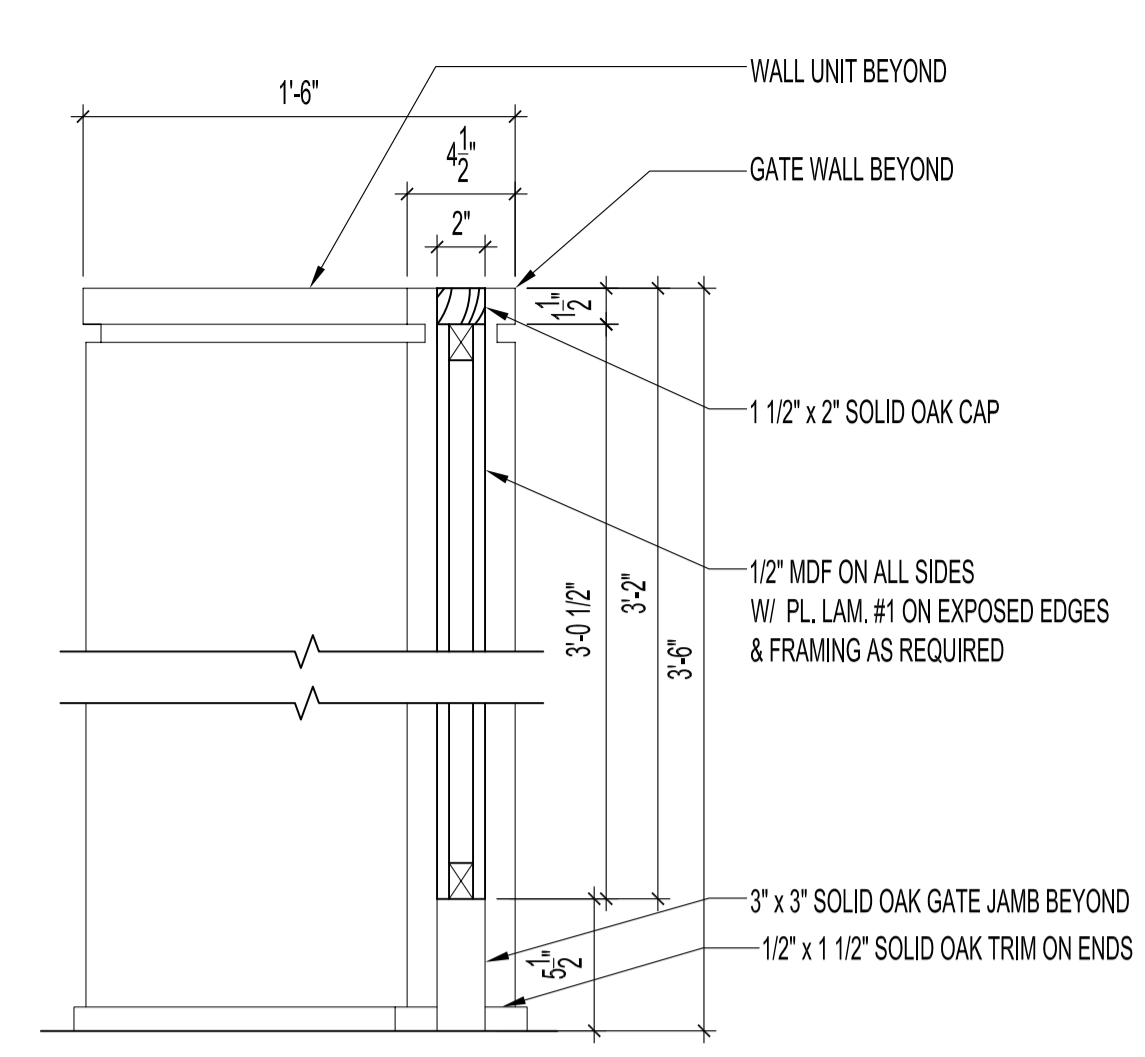
7 SECTION- GATE WALL
 A5 SCALE: 1 1/2' = 1'-0"



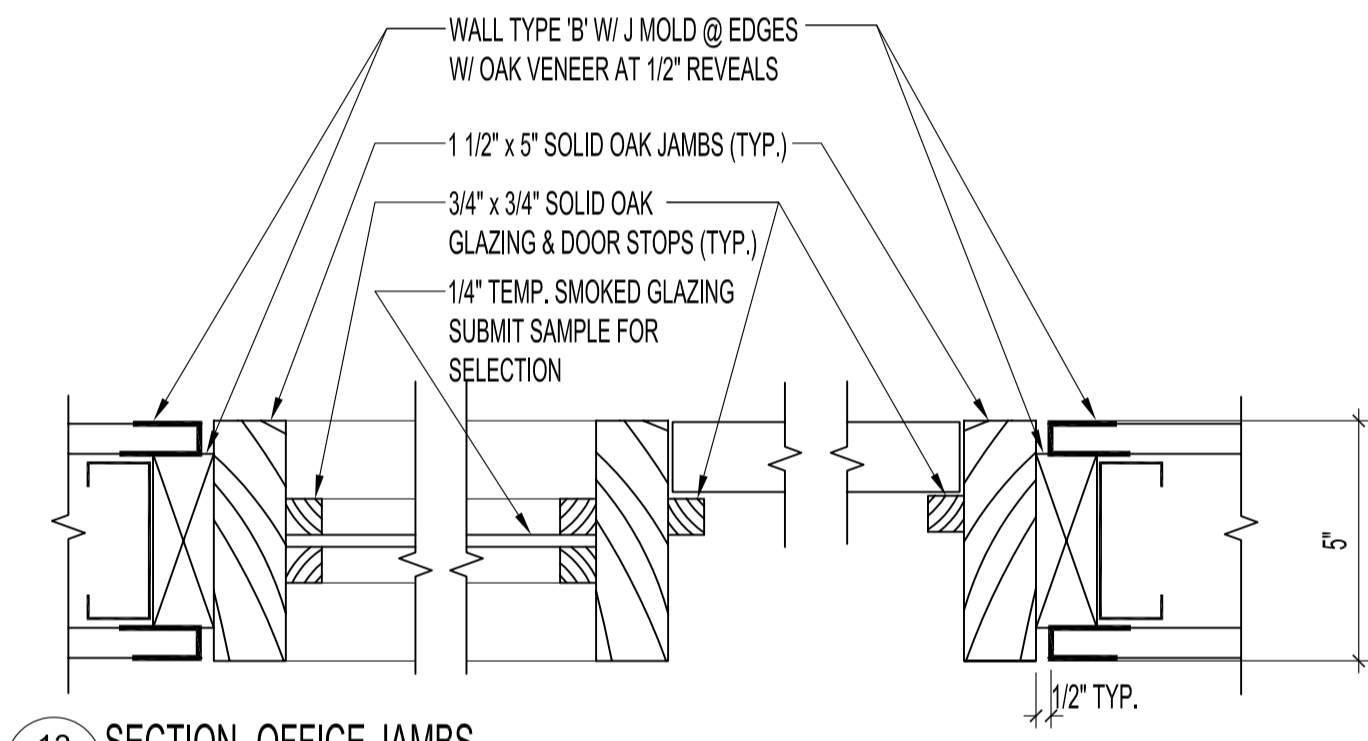
12 SECTION- OFFICE DOOR HEADER
 A5 SCALE: 3' = 1'-0"



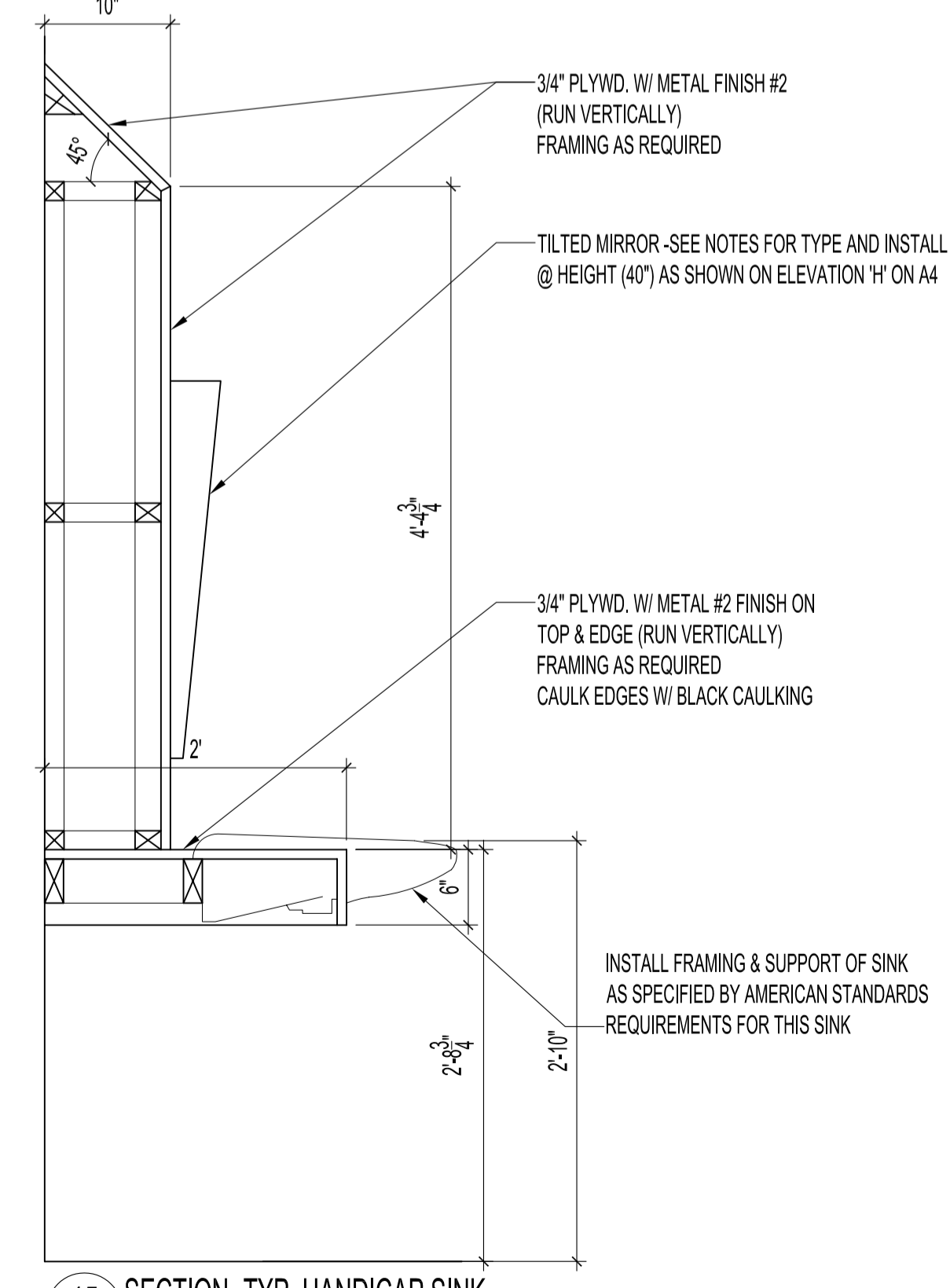
14 SECTION- TYP. CABINETS
 A5 SCALE: 1' = 1'-0"



8 SECTION- GATE
 A5 SCALE: 1 1/2' = 1'-0"



13 SECTION- OFFICE JAMBS
 A5 SCALE: 3' = 1'-0"



15 SECTION- TYP. HANDICAP SINK
 A5 SCALE: 1' = 1'-0"

NOTES :
 GENERAL NOTES & FINISHES:
 OAK FINISHES - STAIN ALL OAK TO MATCH EXISTING CONFERENCE ROOMS ALL TO HAVE 3 COATS OF MATTE POLYURETHANE FINISH. SAND & DUST W/ TACK CLOTH BETWEEN EACH COAT.
 FINISHES BY ROOM
 ELEVATOR LOBBY 200
 METAL #1 - FORMICA DECOMETAL COLLECTION #2126 "BRUSHED BRONZETONED ALUMINIUM" (TO RUN VERTICALLY ON ALL APPLICATIONS)
 WIRE MESH ACRYLIC - LUMICOR METALLIC COLLECTION "BRONZE MESH" L810102H#032 (1/4" THICKNESS)
 RECEPTION / WAITING 207
 PL. LAM. #1 - WILSONART #7816 "SOLAR OAK"
 GATE HARDWARE - K & V SECRET GATE LATCH 989 SPR BR, FULL HEIGHT HEAVY DUTY PIANO HINGE
 GENERAL OFFICE 210 & CORRIDOR 214
 PL. LAM. #2 - PANOLAM P895 "EBONY SAND" W/ WHITE MELAMINE ON INTERIOR CABINETS
 PL. LAM. #3 - NEVAMAR "MANHATTAN GLAMOUR" MH6001T TEXTURED DOOR & DRAWER PULLS - HAFELE #117.31.320 (116 x 28mm)
 DRAWER SLIDES - K&V 8400 FULL EXTENSION
 DOOR HINGES - BLUM CUP HINGES 170 DEGREE OPENING, NICKEL PLATED
 HANDICAP WASHROOMS 219 & 220
 METAL #2 - FORMICA DECOMETAL COLLECTION "BRUSHED BLACK ALUMINIUM" #4254 (TO RUN VERTICALLY ON ALL APPLICATIONS)
 TILE #1 - AMES CINETICA SERIES 4 1/4" x 4 1/4" #CIN4W
 TILE #2 (BAND) - AMES CINETICA SERIES 1.6" x 4 1/4" #CIN15L
 BOBRICK ACCESSORIES
 (-ALL ACCESSORIES TO BE MOUNTED ACCORDING TO ELEVATIONS ON A4)
 COAT HOOK - B-233
 GRAB BARS - (BACK & SIDE) 6806 x 36" PEENED GRIP W/ #251-4 WINGIT GRAB BAR FASTENERS AT EACH GRAB BAR END
 TOILET PAPER DISPENSER - #B-2893 CLASSIC SERIES TWIN JUMBO-ROLL
 TOILET TISSUE DISPENSER
 PAPER TOWEL DISPENSER & WASTE RECEPTACLE - B-38034 TRIMLINE SERIES
 AUTOMATIC LAVATORY-MOUNTED SOAP DISPENSER - B-826 W/ MULTIPLE PLASTIC SPACERS
 TILT MIRROR - B-293-1630
 WOMEN'S SANITARY NAPKIN VENDOR - TRIMLINE SERIES B-3500
 WALL MOUNTED DOOR BUMPER - B-687

ORIGINAL SEALED BY:
 R.K. FOK LI Arch.
 Date: 2005.11.15

NO.	REVISION/DESCRIPTION	BY	DATE
SEALS			
DRAWN BY: MMK DATE: 2005.11.15			
CHECKED BY: USER APPROVAL		APPROVED	
CITY OF WINNIPEG PLANNING, PROPERTY & DEVELOPMENT DEPARTMENT CIVIC ACCOMMODATIONS DIVISION 300 - 65 GARRY ST. R3C 4K4			
PROJECT ADMINISTRATION BUILDING SECOND FLOOR RENOVATIONS CONVERSION TO OFFICE AREA 510 MAIN STREET			
SHEET TITLE SECOND FLOOR PLAN MILLWORK SECTIONS			
SCALE AS NOTED	PROJECT NO. 2004-180-06	SHEET NO. A5	