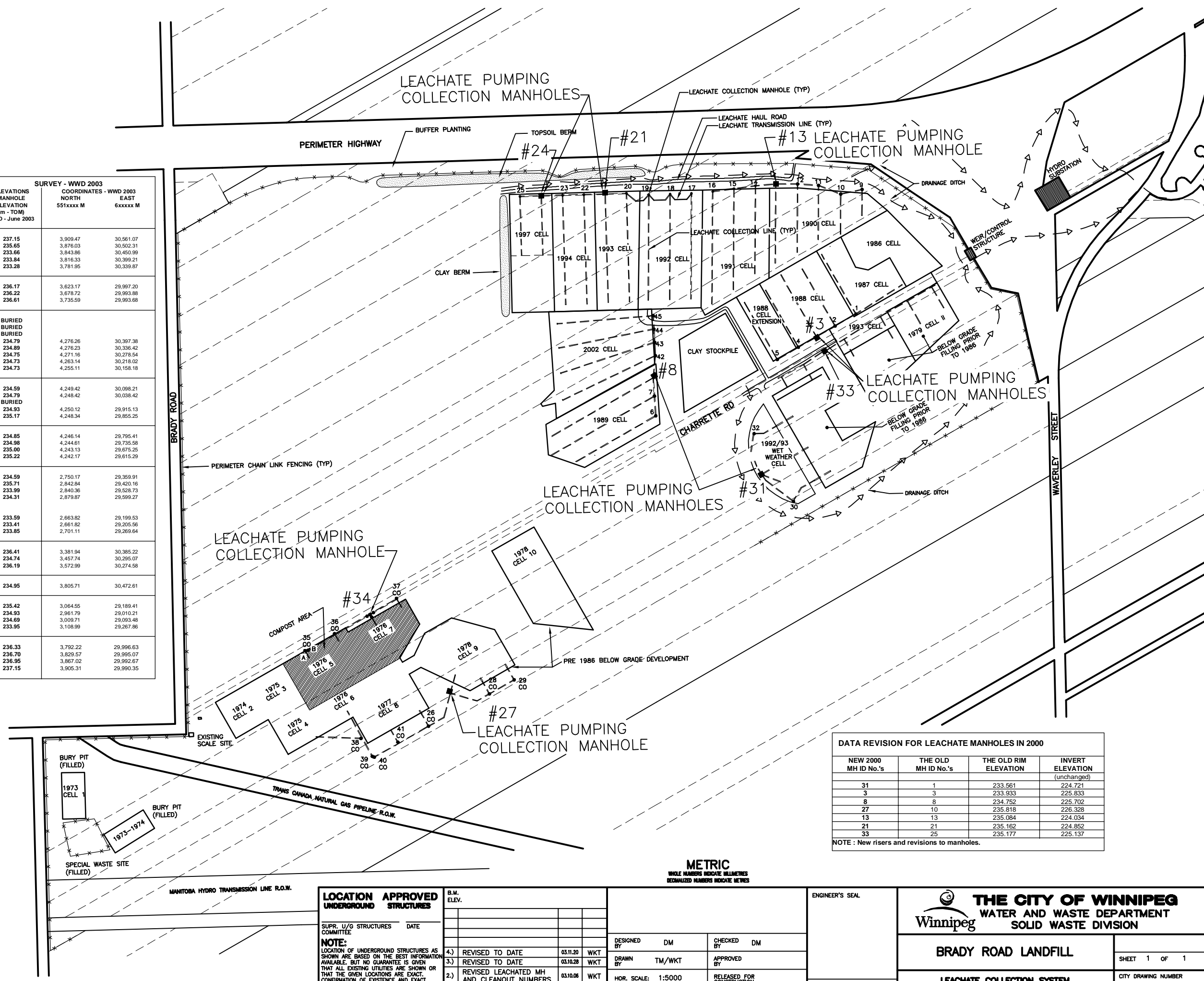


BRADY ROAD LANDFILL LEACHATE COLLECTION
LEACHATE COLLECTION SYSTEMS
JUNE 2003 LEACHATE MANHOLES & LEACHATE CLEANOUTS
 SUMP MANHOLES ARE OUTLINED. LEACHATE IS PUMPED FROM THE SUMP MANHOLES.

LEACHATE COLLECTION SYSTEM REFUSE CELLS	2001 MANHOLE / CLEANOUT NEW IDENTIFICATION NUMBER	IDENTIFICATION	ELEVATIONS MANHOLE ELEVATION (m - TOM) WWD - June 2003	SURVEY - WWD 2003 COORDINATES - WWD 2003	
				NORTH 551xxxx M	EAST 6xxxxx M
1987 CELL	1	MANHOLE	237.15	3,909.47	30,561.07
1988 CELL	2	MANHOLE	235.65	3,876.03	30,502.31
	3	SUMP MANHOLE	233.86	3,843.86	30,450.99
1988 CELL EXTENSION	4	MANHOLE	233.84	3,816.33	30,399.21
	5	MANHOLE	233.28	3,781.95	30,339.87
1989 CELL	6	MANHOLE	236.17	3,623.17	29,997.20
	7	MANHOLE	236.22	3,678.72	29,993.88
	8	SUMP MANHOLE	236.61	3,735.59	29,993.68
1990 CELL	9	MANHOLE	BURIED		
	10	MANHOLE	BURIED		
	11	MANHOLE	BURIED		
	12	MANHOLE	234.79	4,276.26	30,397.38
1991 CELL	13	SUMP MANHOLE	234.89	4,276.23	30,336.42
	14	MANHOLE	234.75	4,271.16	30,278.54
	15	MANHOLE	234.73	4,263.14	30,218.02
	16	MANHOLE	234.73	4,255.11	30,158.18
1992 CELL	17	MANHOLE	234.59	4,249.42	30,098.21
	18	MANHOLE	234.79	4,248.42	30,038.42
	19	MANHOLE	BURIED		
1993 CELL	20	MANHOLE	234.93	4,250.12	29,915.13
	21	SUMP MANHOLE	235.17	4,248.34	29,855.25
1994 CELL	22	MANHOLE	234.85	4,246.14	29,795.41
	23	MANHOLE	234.98	4,244.61	29,735.58
1997 CELL	24	SUMP MANHOLE	235.00	4,243.13	29,675.25
	25	MANHOLE	235.22	4,242.17	29,615.29
1977 CELL 8	26	CLEANOUT	234.59	2,750.17	29,359.91
1978 CELL 9	27	SUMP MANHOLE	235.71	2,842.84	29,420.16
1978 CELL 9	28	CLEANOUT	233.99	2,840.36	29,528.73
1978 CELL 9	29	CLEANOUT	234.31	2,879.87	29,599.27
	38	CLEANOUT			
	39	CLEANOUT	233.59	2,663.82	29,199.53
	40	CLEANOUT	233.41	2,661.82	29,205.56
	41	CLEANOUT	233.85	2,701.11	29,269.64
1992/93 WET WEATHER CELL	30	MANHOLE	236.41	3,381.94	30,385.22
	31	SUMP MANHOLE	234.74	3,457.74	30,295.07
	32	MANHOLE	236.19	3,572.99	30,274.58
1979 CELL & PRE 1986	33	SUMP MANHOLE	234.95	3,805.71	30,472.61
1976 CELL 5 & 7	34	SUMP MANHOLE	235.42	3,064.55	29,189.41
	35	CLEANOUT	234.93	2,961.79	29,010.21
	36	CLEANOUT	234.69	3,009.71	29,093.48
	37	CLEANOUT	233.95	3,108.99	29,267.86
2002 CELL	42 connects to Sump Manhole No. 8				
	42	MANHOLE	236.33	3,792.22	29,996.63
	43	MANHOLE	236.70	3,829.57	29,995.07
	44	MANHOLE	236.95	3,867.02	29,992.67
	45	MANHOLE	237.15	3,905.31	29,990.35



DATA REVISION FOR LEACHATE MANHOLES IN 2000

NEW 2000 MH ID No.'s	THE OLD MH ID No.'s	THE OLD RIM ELEVATION	INVERT ELEVATION (unchanged)
31	1	233.561	224.721
3	3	233.933	225.833
8	8	234.752	225.702
27	10	235.818	226.328
13	13	235.084	224.034
21	21	235.162	224.852
33	25	235.177	225.137

NOTE: New risers and revisions to manholes.

LOCATION APPROVED UNDERGROUND STRUCTURES

SUPR. U/G STRUCTURES COMMITTEE DATE

NOTE: LOCATION OF UNDERGROUND STRUCTURES AS SHOWN ARE BASED ON THE BEST INFORMATION AVAILABLE, BUT NO GUARANTEE IS GIVEN THAT ALL EXISTING UTILITIES ARE SHOWN OR THAT THE GIVEN LOCATIONS ARE EXACT. CONFIRMATION OF EXISTENCE AND EXACT LOCATION OF ALL SERVICES MUST BE OBTAINED FROM THE INDIVIDUAL UTILITIES BEFORE PROCEEDING WITH CONSTRUCTION.

B.M. ELEV.	NO.	REVISIONS	DATE	BY
	4.)	REVISED TO DATE	03.11.20	WKT
	3.)	REVISED TO DATE	03.10.28	WKT
	2.)	REVISED LEACHATED MH AND CLEANOUT NUMBERS	03.10.06	WKT
	1.)	REVISION 1	99-02-02	DGS

DESIGNED BY	DM	CHECKED BY	DM
DRAWN BY	TM/WKT	APPROVED BY	
HOR. SCALE:	1:5000	RELEASED FOR CONSTRUCTION	
VERTICAL:		DATE	14 APRIL 1997

ENGINEER'S SEAL

CONSULTANT DRAWING NO.

PLOT DATE: 2005 11 21

THE CITY OF WINNIPEG
 WATER AND WASTE DEPARTMENT
 SOLID WASTE DIVISION

BRADY ROAD LANDFILL

LEACHATE COLLECTION SYSTEM
 GENERAL PLAN

SHEET 1 OF 1

CITY DRAWING NUMBER
SWD-D-338

METRIC
 WHOLE NUMBERS INDICATE MILLIMETRES
 DECIMALIZED NUMBERS INDICATE METRES