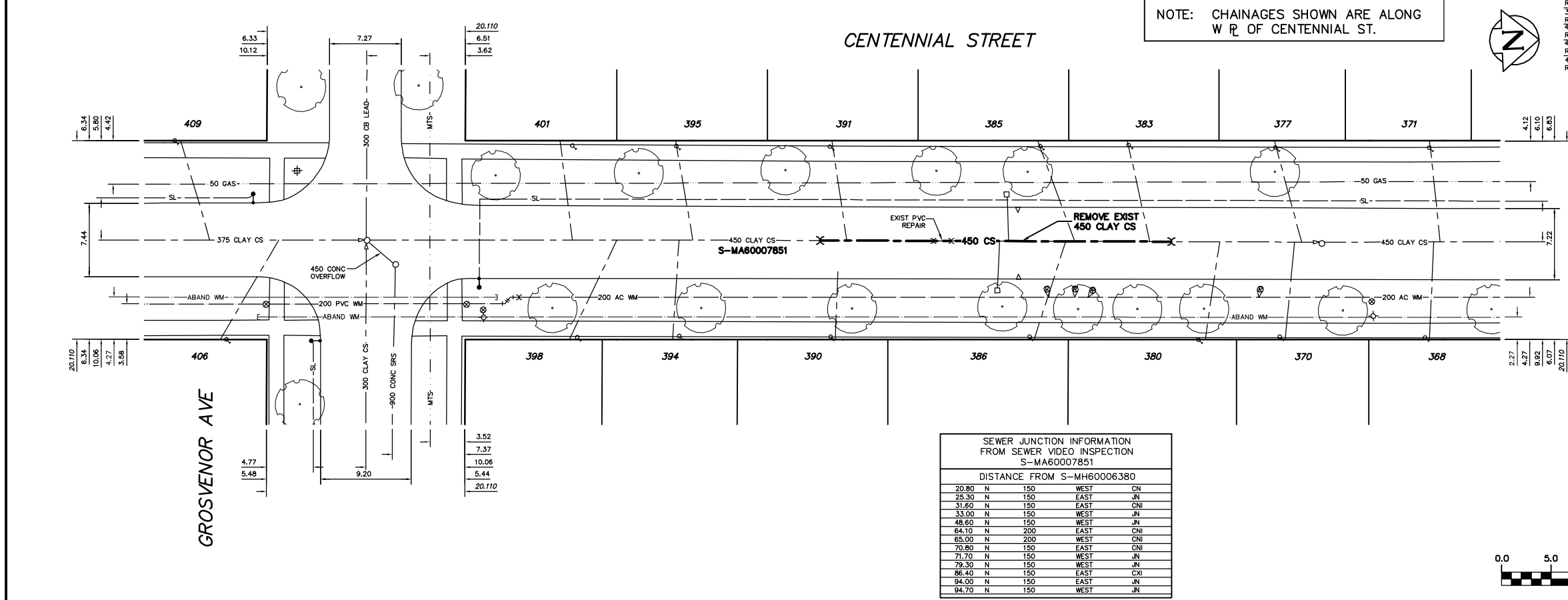


SEWER SERVICE INFORMATION		
ADDRESS	SIZE	R DIST
368 CENTENNIAL ST	20	6.15 N OF SL
RESIDENTIAL		11.39 N 1ST MH N GROSVENOR
370 CENTENNIAL ST	20	4.95 N OF SL
RESIDENTIAL		94.0 N MH AT GROSVENOR
371 CENTENNIAL ST	20	4.20 S OF NL
RESIDENTIAL		12.0 N 1ST MH N GROSVENOR
377 CENTENNIAL ST	20	5.65 N OF SL
RESIDENTIAL		94.70 N MH AT GROSVENOR
380 CENTENNIAL ST	20	3.14 S OF NL
RESIDENTIAL		86.40 N MH AT GROSVENOR
383 CENTENNIAL ST	20	5.97 N OF SL
RESIDENTIAL		79.30 N MH AT GROSVENOR
385 CENTENNIAL ST	20	3.16 S OF NL
RESIDENTIAL		71.70 N MH AT GROSVENOR
386 CENTENNIAL ST	20	3.50 S OF NL
RESIDENTIAL		70.80 N MH AT GROSVENOR
390 CENTENNIAL ST	20	5.50 S OF NL
RESIDENTIAL		48.92 S 1ST MH N GROSVENOR
391 CENTENNIAL ST	20	6.54 N OF SL
RESIDENTIAL		48.60 N MH AT GROSVENOR
394 CENTENNIAL ST	20	4.73 S OF NL
RESIDENTIAL		31.60 N MH AT GROSVENOR
395 CENTENNIAL ST	20	9.28 S OF NL
RESIDENTIAL		33.0 N MH AT GROSVENOR
398 CENTENNIAL ST	20	3.31 S OF NL
RESIDENTIAL		25.30 N MH AT GROSVENOR
401 CENTENNIAL ST	20	5.74 S OF NL
RESIDENTIAL		20.80 N MH AT GROSVENOR
406 CENTENNIAL ST	20	4.71 S OF NL
RESIDENTIAL		8.94 S MH AT GROSVENOR
409 CENTENNIAL ST	20	5.74 S OF NL
RESIDENTIAL		15.91 S MH AT GROSVENOR

WATER SERVICE INFORMATION					
ADDRESS	SIZE(mm) & TYPE	SIZE(mm) & TYPE	SHORT & LONG MEASUREMENT (STREET) (PROP)	CORP. LOCATION	REMARKS
368 CENTENNIAL ST	20	20	97.27 NNL GROSVENOR	4.0 S HYD#371	-
RESIDENTIAL	COPPER	COPPER			
370 CENTENNIAL ST	20	20	82.60 NNL GROSVENOR	9.8 S HYD#371	-
RESIDENTIAL	COPPER	COPPER			
371 CENTENNIAL ST	20	20	97.32 NNL GROSVENOR	4.6 S HYD#371	-
RESIDENTIAL	COPPER	COPPER			
377 CENTENNIAL ST	20	12	81.78 NNL GROSVENOR	10.2 S HYD#371	-
RESIDENTIAL	COPPER	LEAD			
380 CENTENNIAL ST	20	20	74.37 NNL GROSVENOR	17.9 S HYD#371	-
RESIDENTIAL	COPPER	COPPER			
383 CENTENNIAL ST	20	12	67.06 NNL GROSVENOR	25.7 S HYD#371	-
RESIDENTIAL	COPPER	LEAD			
385 CENTENNIAL ST	20	12	58.22 NNL GROSVENOR	33.9 S HYD#371	-
RESIDENTIAL	COPPER	LEAD			
386 CENTENNIAL ST	20	20	57.76 NNL GROSVENOR	34.9 S HYD#371	-
RESIDENTIAL	COPPER	COPPER			
390 CENTENNIAL ST	20	20	37.03 NNL GROSVENOR	33.2 N HYD#398	-
RESIDENTIAL	COPPER	COPPER			
391 CENTENNIAL ST	20	20	36.73 NNL GROSVENOR	33.7 N HYD#398	-
RESIDENTIAL	COPPER	COPPER			
394 CENTENNIAL ST	20	20	21.49 NNL GROSVENOR	23.4 N HYD#398	-
RESIDENTIAL	COPPER	COPPER			
395 CENTENNIAL ST	20	20	21.06 NNL GROSVENOR	22.9 N HYD#398	-
RESIDENTIAL	COPPER	LEAD			
398 CENTENNIAL ST	20	20	11.43 NNL GROSVENOR	8.2 N HYD#398	-
RESIDENTIAL	COPPER	COPPER			
401 CENTENNIAL ST	20	20	10.97 NNL GROSVENOR	8.6 N HYD#398	-
RESIDENTIAL	COPPER	COPPER			
406 CENTENNIAL ST	20	20	1.50 NSL HSE	2.3 N OF S/C	-
RESIDENTIAL	COPPER	COPPER			
409 CENTENNIAL ST	20	20	4.60 NSL HSE	0.2 S OF S/C	-
RESIDENTIAL	COPPER	COPPER			

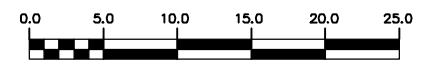


NOTE: CHAINAGES SHOWN ARE ALONG W R OF CENTENNIAL ST.



- CONSTRUCTION NOTES:**
- SEWER TO BE RENEWED BY TRENCHLESS METHODS.
 - CONFIRM THE LOCATION OF ALL SEWER SERVICES WITHIN LIMITS OF RENEWAL.
 - OBTAIN VIDEO INSPECTION OF ALL SEWER SERVICES AND CB LEADS FROM OPEN EXCAVATION TO PROPERTY LINE.
 - SEWER SERVICES TO BE INSTALLED AT A MINIMUM 1.0% SLOPE.
 - BACKFILL IN BOULEVARD TO BE CLASS 5.
 - BACKFILL UNDER PAVEMENT, IN SIDEWALKS, & WITHIN 1.0 m OF PAVEMENT TO BE CLASS 3.

SEWER JUNCTION INFORMATION FROM SEWER VIDEO INSPECTION S-MA60007851			
DISTANCE FROM S-MH60006380			
20.80	N	150	WEST CN
25.30	N	150	EAST JN
31.60	N	150	EAST CN
33.00	N	150	WEST JN
48.60	N	150	WEST JN
64.10	N	200	EAST CN
65.00	N	200	WEST CN
70.80	N	150	EAST CN
71.70	N	150	WEST JN
79.30	N	150	WEST JN
86.40	N	150	EAST CN
94.00	N	150	EAST JN
94.70	N	150	WEST JN



WARNING
IF POWER EQUIPMENT OR EXPLOSIVES ARE TO BE USED FOR EXCAVATION ON THIS PROJECT THE CONTRACTOR MUST:
1) NOTIFY THE GAS COMPANY OF THE PROPOSED LOCATION OF EXCAVATION.
2) TAKE PRECAUTION TO AVOID DAMAGE TO GAS COMPANY INSTALLATIONS.
SEE PROVINCIAL REGULATION 210/72 FOR DETAILS

200 WM	WATERMAIN	200 WM	SL, HYDRO	150 WM	WATERMAIN	150 WM
⊕	HYDRANT	⊕	MTS	⊕	HYDRANT	⊕
⊙	VALVE	⊙	TRAFFIC SIGNALS	⊙	VALVE	⊙
525 LDS	LAND DRAINAGE SEWER	525 LDS	GAS	50 GAS	300 LDS	LAND DRAINAGE SEWER
375 WWS	WASTEWATER SEWER	375 WWS	SURVEY BAR	250 WWS	WASTEWATER SEWER	250 WWS
○	MANHOLE	○	FENCE	⊕	PROFILE	
□	CATCH BASIN	□	POLE - HYDRO, MTS	⊕	GROUND ABOVE PIPE	
▽	CURB INLET	▽	CURB STOP	⊕	⊕ DITCH (NORTH & WEST)	
⊕	JUNCTIONS	⊕	GUY ANCHOR	⊕	⊕ DITCH (SOUTH & EAST)	
⊕	CULVERT	⊕	LIGHT STANDARD	⊕	⊕ GUTTER (NORTH & WEST)	
⊕	ANODE	⊕	TREE	⊕	⊕ GUTTER (SOUTH & EAST)	
EXISTING	LEGEND-PLAN	PROPOSED	EXISTING	LEGEND-PLAN	PROPOSED	EXISTING
				LEGEND-PROFILE	PROPOSED	

LOCATION APPROVED UNDERGROUND STRUCTURES

SUPV. U/G STRUCTURES COMMITTEE DATE

NOTE: LOCATION OF UNDERGROUND STRUCTURES AS SHOWN ARE BASED ON THE BEST INFORMATION AVAILABLE BUT NO GUARANTEE IS GIVEN THAT ALL EXISTING UTILITIES ARE SHOWN OR THAT THE GIVEN LOCATIONS ARE EXACT. CONFIRMATION OF EXISTENCE AND EXACT LOCATION OF ALL SERVICES MUST BE OBTAINED FROM THE INDIVIDUAL UTILITIES BEFORE PROCEEDING WITH CONSTRUCTION.

CITY OF WINNIPEG WATER AND WASTE ENGINEERING DIVISION

DESIGNED BY: NC CHECKED BY: TW

DRAWN BY: C/JH APPROVED BY: KZ

HOR. SCALE: 1:250 VERTICAL: 1:50

DATE: 2005 12 09

ENGINEER'S SEAL

ORIGINAL SIGNED BY K.R. ZUREK 05/12/07

BID OPPORTUNITY: 683-2005 FILENAME: 05706_05706_Centennial_Full.Plot DATE: 2005 12 09

THE CITY OF WINNIPEG
WATER AND WASTE DEPARTMENT

2005 SEWER RENEWALS AND SEWER REPAIRS CONTRACT 18

CENTENNIAL STREET
MH AT GROSVENOR AVENUE TO 1ST MH N OF GROSVENOR AVENUE

SHEET 7 OF 10
CITY DRAWING NUMBER 05706