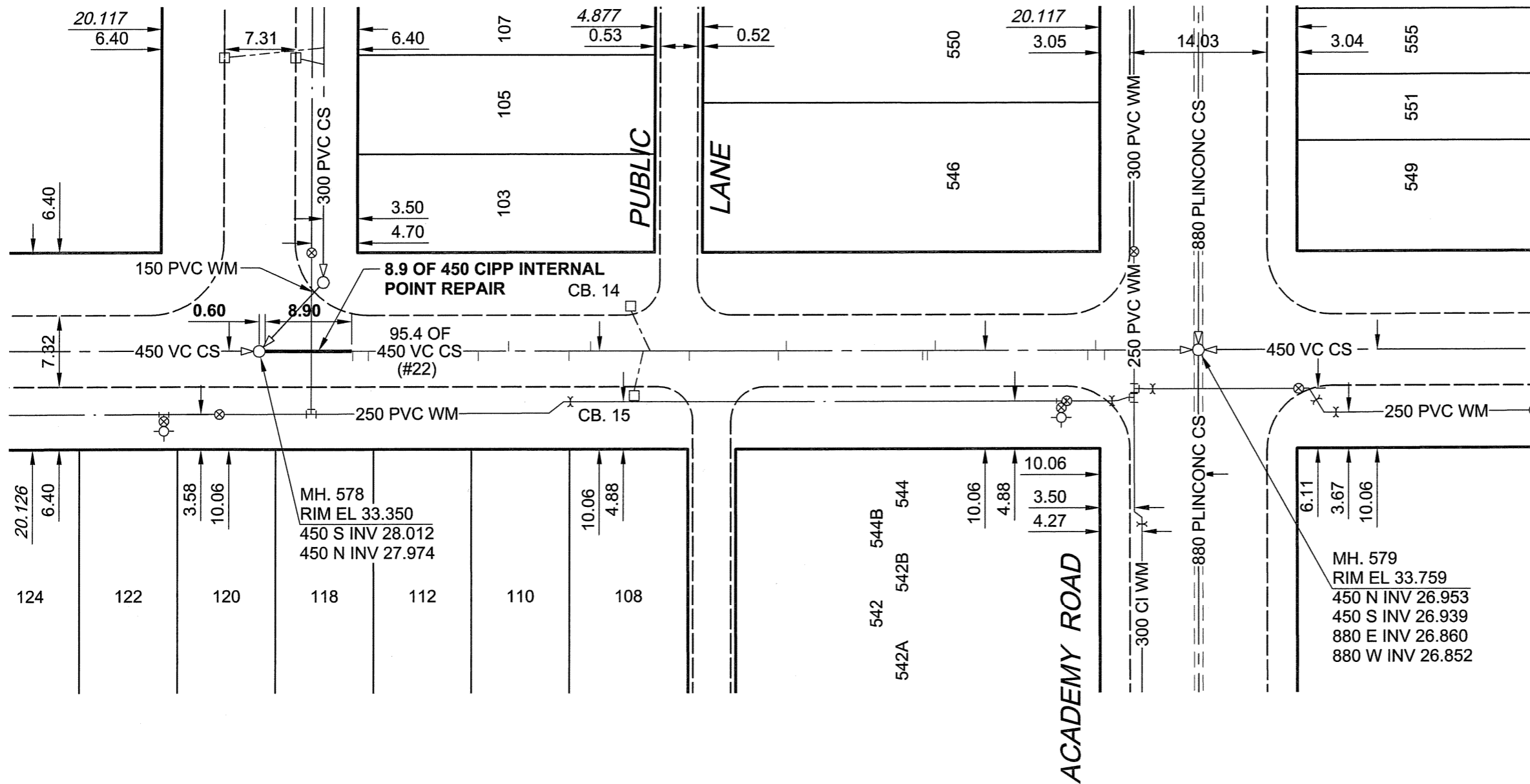


B SIZE 11" x 17" (279mm x 432mm)

PLOT: 06/01/12 10:54:49 AM

UMA FILE NAME: D265-195-02_01-C-1013_RX.dwg Saved By: kberard

LANARK AVENUE



SEWER JUNCTION INFORMATION*

REF. MH	DIST FROM REF. MH	SIZE	CLOCK REF
578	9.60	150Ø	01
578	11.20	150Ø	02
578	22.50	150Ø	02
578	25.60	150Ø	10
578	31.80	150Ø	02
578	34.00	150Ø	10
578	39.40	150Ø	02
578	40.10	150Ø	10
578	44.10	150Ø	02
578	53.20	150Ø	02
578	54.00	150Ø	11
578	67.90	150Ø	02
578	68.40	150Ø	02
578	69.20	150Ø	10
579	9.60	150Ø	10
579	10.50	150Ø	02
579	10.50	150Ø	02
579	11.30	150Ø	10

*JUNCTION LOCATION FROM VIDEO INSPECTION

METRIC

WHOLE NUMBERS INDICATE MILLIMETRES
DECIMALIZED NUMBERS INDICATE METRES

Certificate of Authorization
UMA Engineering Ltd.
No. 256 Expiry: April 30, 2006

BID OPPORTUNITY NO. 695-2005

LOCATION APPROVED UNDERGROUND STRUCTURES

SUPR. U/G STRUCTURES DATE
COMMITTEE

NOTE:
LOCATION OF UNDERGROUND STRUCTURES AS SHOWN ARE BASED ON THE BEST INFORMATION AVAILABLE. BUT NO GUARANTEE IS GIVEN THAT ALL EXISTING UTILITIES ARE SHOWN OR THAT THE GIVEN LOCATIONS ARE EXACT. CONFIRMATION OF EXISTENCE AND EXACT LOCATION OF ALL SERVICES MUST BE OBTAINED FROM THE INDIVIDUAL UTILITIES BEFORE PROCEEDING WITH CONSTRUCTION.

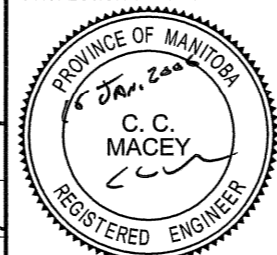
BM 51-044 ELEV 234.311m	Tbtl. in 3.9 m Conc. pile beneath Valve Box marked B.M., Btw'n Lockwood St. & Centennial St., 9.7 m E. of C.L. Track & 17.6 m N. of S.L. Academy Rd.		
NO.	REVISIONS	YY/MM/DD	BY
0	ISSUED FOR CONSTRUCTION	06/01/12	KMB

UMA | AECOM

© 2005 UMA ENGINEERING LTD. ALL RIGHTS RESERVED.

DESIGNED BY	ALD / MJR	CHECKED BY	ALD
DRAWN BY	KMB	APPROVED BY	<i>[Signature]</i>
HOR. SCALE	1:500	RELEASED FOR CONSTRUCTION	<i>[Signature]</i>
VERT. SCALE		DATE	06/01/12

PROFESSIONAL'S SEAL



CONSULTANT DRAWING NO. 12
D265-195-02



THE CITY OF WINNIPEG WATER AND WASTE DEPARTMENT

2005 COMBINED SEWER RENEWALS BY CIPP INTERNAL POINT REPAIRS CONTRACT 20

LANARK AVENUE
1ST MH S OF ACADEMY ROAD
TO MH AT ACADEMY ROAD

SHEET 12 OF 26

CITY DRAWING NUMBER

05721

REV 0