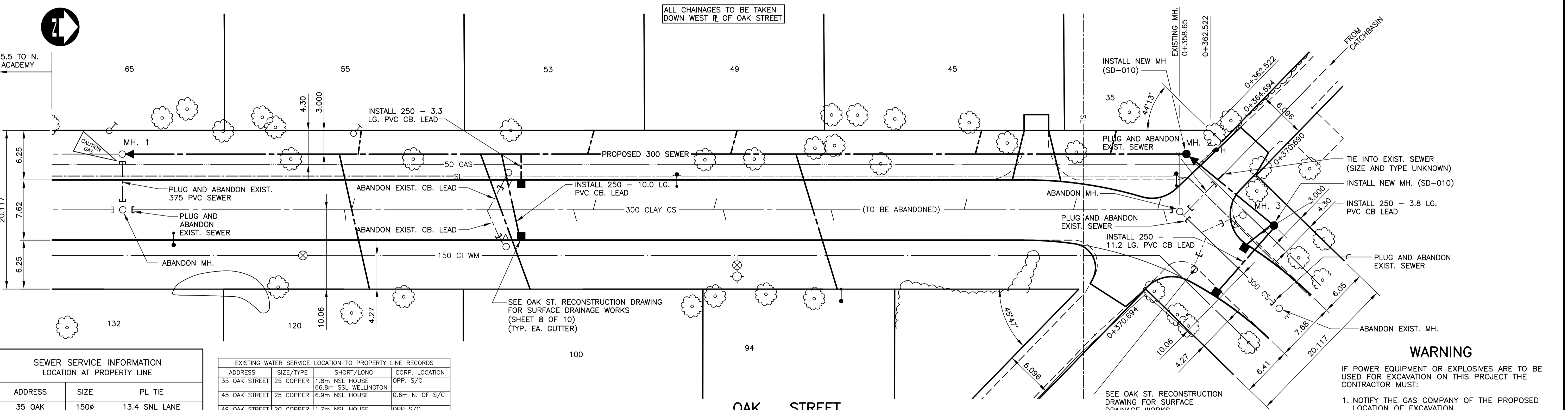


- CONSTRUCTION NOTES:**
- SEWER TO BE RENEWED OFF-LINE USING TRENCHLESS METHODS.
 - CONFIRM LOCATION OF ALL EXISTING SEWER SERVICES.
 - PROPOSED SEWER SERVICES SHOWN ARE FOR BIDDING PURPOSES ONLY.
 - ALL CATCHBASIN LEADS 1.0% MINIMUM SLOPE UNLESS OTHERWISE NOTED.
 - ALL BACKFILL UNDER PAV'T TO BE CLASS 3
 - ALL BACKFILL UNDER SIDEWALKS TO BE CLASS 3
 - ALL BACKFILL UNDER BOULEVARDS TO BE CLASS 5.
 - ALL SEWER PIPE TO BE INSTALLED BY CORING.
 - ALL SEWER SERVICES TO BE RENEWED FROM PROPERTY LINE TO COMBINED SEWER.
 - CONTRACTOR SHALL CO-ORDINATE TIMING OF ABANDONMENT OF EXISTING SEWER, MANHOLES, CATCHBASINS & CURB INLETS SO AS NOT TO CREATE ANY SEWER OR DRAINAGE PROBLEMS.



ALL CHAINAGES TO BE TAKEN DOWN WEST R. OF OAK STREET

WARNING

IF POWER EQUIPMENT OR EXPLOSIVES ARE TO BE USED FOR EXCAVATION ON THIS PROJECT THE CONTRACTOR MUST:

- NOTIFY THE GAS COMPANY OF THE PROPOSED LOCATION OF EXCAVATION.
- TAKE PRECAUTION TO AVOID DAMAGE TO GAS COMPANY INSTALLATIONS SEE PROVINCIAL REGULATION 210/72 FOR DETAILS

SEWER SERVICE INFORMATION
LOCATION AT PROPERTY LINE

ADDRESS	SIZE	PL TIE
35 OAK	150Ø	13.4 SNL LANE
45 OAK	150Ø	10.5 SNL LOT
49 OAK		NO INFO
53 OAK		6.4 SNL LOT
55 OAK		13.1 SNL LOT
94 OAK		7.3 SNL LOT
100 OAK		8.5 SNL LOT
120 OAK		11.9 SNL LOT

EXISTING WATER SERVICE LOCATION TO PROPERTY LINE RECORDS

ADDRESS	SIZE/TYPER	SHORT/LONG	CORP. LOCATION
35 OAK STREET	25 COPPER	1.8m NSL HOUSE	OPP. S/C
45 OAK STREET	25 COPPER	66.8m SSL WELLINGTON	0.6m N. OF S/C
49 OAK STREET	20 COPPER	1.7m NSL HOUSE	OPP. S/C
53 OAK STREET	25 COPPER	100.9m SSL WELLINGTON	1.2m S. OF S/C
55 OAK STREET	20 COPPER	3.4m NSL HOUSE	OPP. S/C
65 OAK STREET	25 LEAD	155.1m NNL ACADEMY	0.9m N. OF S/C
94 OAK STREET	37 COPPER	9.8 NSL HOUSE	0.9m N. OF S/C
		122.1m NNL ACADEMY	0.3m S. OF S/C
		5.5m SNL HOUSE	
		91.4m SSL WELLINGTON	

EXISTING WATER SERVICE LOCATION TO PROPERTY LINE RECORDS

ADDRESS	SIZE/TYPER	SHORT/LONG	CORP. LOCATION
100 OAK STREET	37 COPPER	0.9m NSL HOUSE	OPP. S/C
120 OAK STREET	25 COPPER	184.7m NNL ACADEMY	0.9m N. OF S/C
132 OAK STREET	20 COPPER	5.1m NSL HOUSE	0.9m N. OF S/C
		155.8m NNL ACADEMY	
		12.2m SNL HOUSE	
		123.1m NNL ACADEMY	

BENCH MARK
251 (854261) - T.B.L. IN 3.9m CONC. PILE BENEATH VALVE BOX MARKED B.M., BT'W. LOCKWOOD ST. & CENTENNIAL ST., 9.7m E. OF C.L. TRACK & 17.6m N. OF S.L. ACADEMY ST.

FOR ROAD RECONSTRUCTION AND CATCH BASIN INSTALLATION SEE SHEET 8 OF 10

LEGEND-PLAN	PROPOSED	EXISTING	LEGEND-PROFILE	PROPOSED	EXISTING
150 mm W.M.	WATERMAIN	150 mm W.M.	150 mm W.M.	WATERMAIN	150 mm W.M.
Hydrant Valve	HYDRANT VALVE	Hydrant Valve	Hydrant Valve	HYDRANT VALVE	Hydrant Valve
300 mm L.O.S.	LAND DRAINAGE SEWER	300 mm L.O.S.	300 mm L.O.S.	LAND DRAINAGE SEWER	300 mm L.O.S.
250 mm W.W.S.	WASTE WATER SEWER	250 mm W.W.S.	250 mm W.W.S.	WASTE WATER SEWER	250 mm W.W.S.
Manhole	MANHOLE	Manhole	Manhole	MANHOLE	Manhole
Catch Basin	CATCH BASIN	Catch Basin	Catch Basin	CATCH BASIN	Catch Basin
Curb Inlet	CURB INLET	Curb Inlet	Curb Inlet	CURB INLET	Curb Inlet
Junctions	JUNCTIONS	Junctions	Junctions	JUNCTIONS	Junctions
Culvert	CULVERT	Culvert	Culvert	CULVERT	Culvert
Gas	GAS	Gas	Gas	GAS	Gas
Hydro M.T.S.	HYDRO M.T.S.	Hydro M.T.S.	Hydro M.T.S.	HYDRO M.T.S.	Hydro M.T.S.
Concrete	CONCRETE	Concrete	CONCRETE	CONCRETE	Concrete
Asphalt	ASPHALT	Asphalt	ASPHALT	ASPHALT	Asphalt
Planing	PLANING	Planing	PLANING	PLANING	Planing
Sidewalk	SIDEWALK	Sidewalk	SIDEWALK	SIDEWALK	Sidewalk
Paving Stones	PAVING STONES	Paving Stones	PAVING STONES	PAVING STONES	Paving Stones
Partial Depth Repair	PARTIAL DEPTH REPAIR	Partial Depth Repair	PARTIAL DEPTH REPAIR	PARTIAL DEPTH REPAIR	Partial Depth Repair
Property Line	PROPERTY LINE	Property Line	PROPERTY LINE	PROPERTY LINE	Property Line
Survey Bar	SURVEY BAR	Survey Bar	SURVEY BAR	SURVEY BAR	Survey Bar
Paraplegic Ramp	PARAPLEGIC RAMP	Paraplegic Ramp	PARAPLEGIC RAMP	PARAPLEGIC RAMP	Paraplegic Ramp

UNDERGROUND STRUCTURES

SUPPLY, U/G STRUCTURES COMMITTEE DATE

NOTE:
LOCATION OF UNDERGROUND STRUCTURES AS SHOWN ARE BASED ON THE BEST INFORMATION AVAILABLE, BUT NO GUARANTEE IS GIVEN THAT ALL EXISTING UTILITIES ARE SHOWN OR THAT THE GIVEN LOCATIONS ARE EXACT. CONFIRMATION OF EXISTENCE AND EXACT LOCATION OF ALL SERVICES MUST BE OBTAINED FROM THE INDIVIDUAL UTILITIES BEFORE PROCEEDING WITH CONSTRUCTION.

NO.	REVISIONS	DATE	BY
2	ISSUED FOR TENDER	03/30/05	PMK
1	ISSUED FOR REVIEW	03/01/04	PMK

B.M. ELEV.	51-044 234.311m
DESIGNED BY	P. KREITZ
DRAWN BY	S. BOTTING
CHECKED BY	D. KRAHN
APPROVED BY	ORIGINAL SIGNED BY D. KRAHN, P. ENG.
HOR. SCALE	1:250
VERTICAL	1:10
RELEASED FOR CONSTRUCTION	ORIGINAL SIGNED BY K. TURKO, C.E.T.
DATE	03/31/05

ENGINEER'S SEAL

PROVINCE OF MANITOBA
REGISTERED PROFESSIONAL ENGINEER

P.M. KREITZ

CONSULTANT PROJECT NO.
04-3914-5000

THE CITY OF WINNIPEG
PUBLIC WORKS DEPARTMENT

2005 RESIDENTIAL STREET RENEWAL PROGRAM

OAK STREET
SEWER RENEWAL
STA. 0+224.32 TO STA. 0+376.74

CITY DRAWING NUMBER
05531

SHEET 10 OF 10

BID OPPORTUNITY
NO. 7-2005