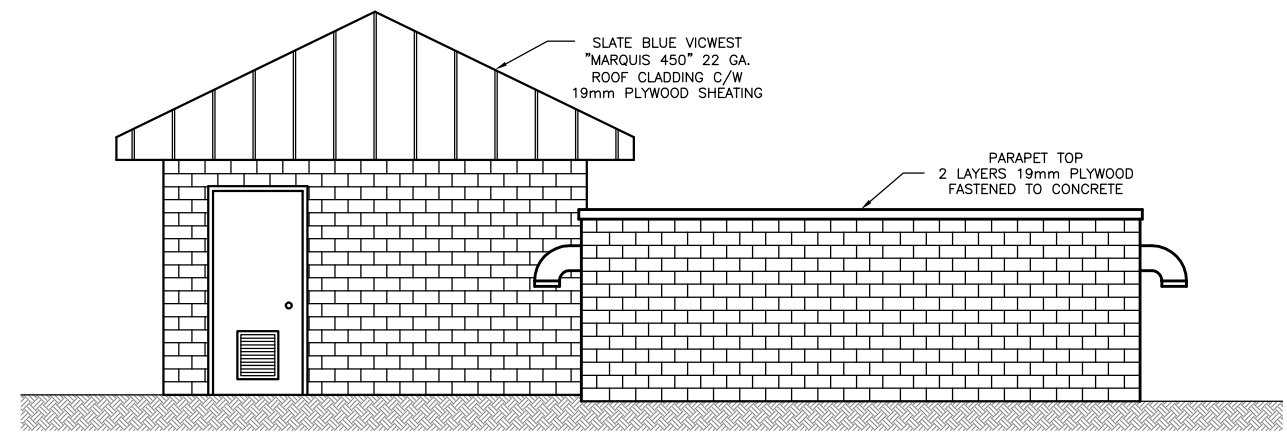
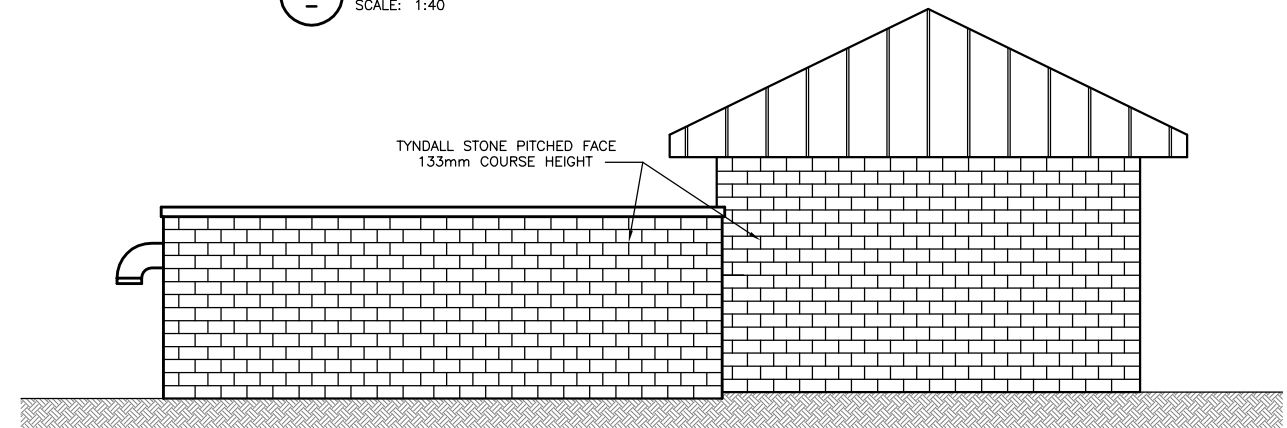


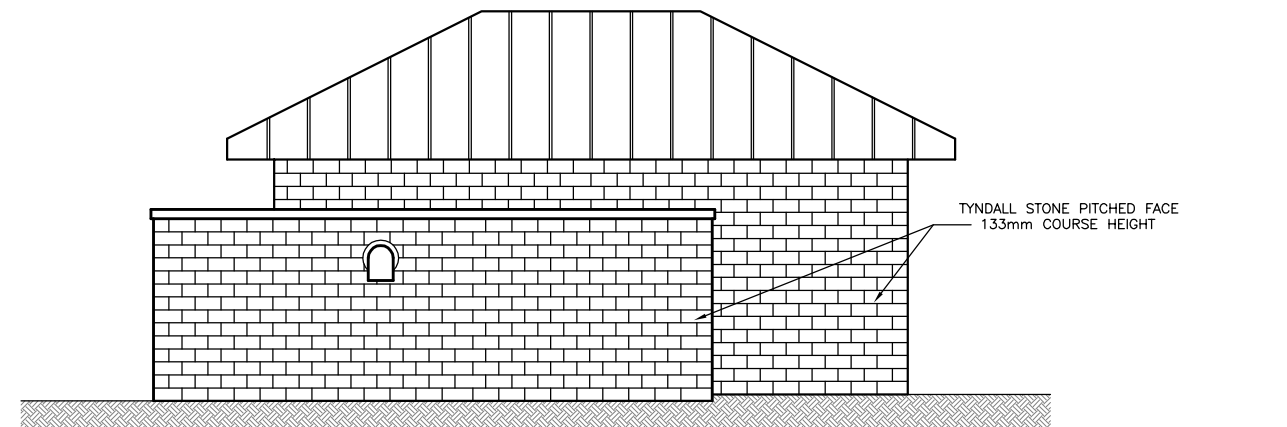
**F SECTION - EXIST. BLDG & EXTENSION**  
SCALE: 1:25



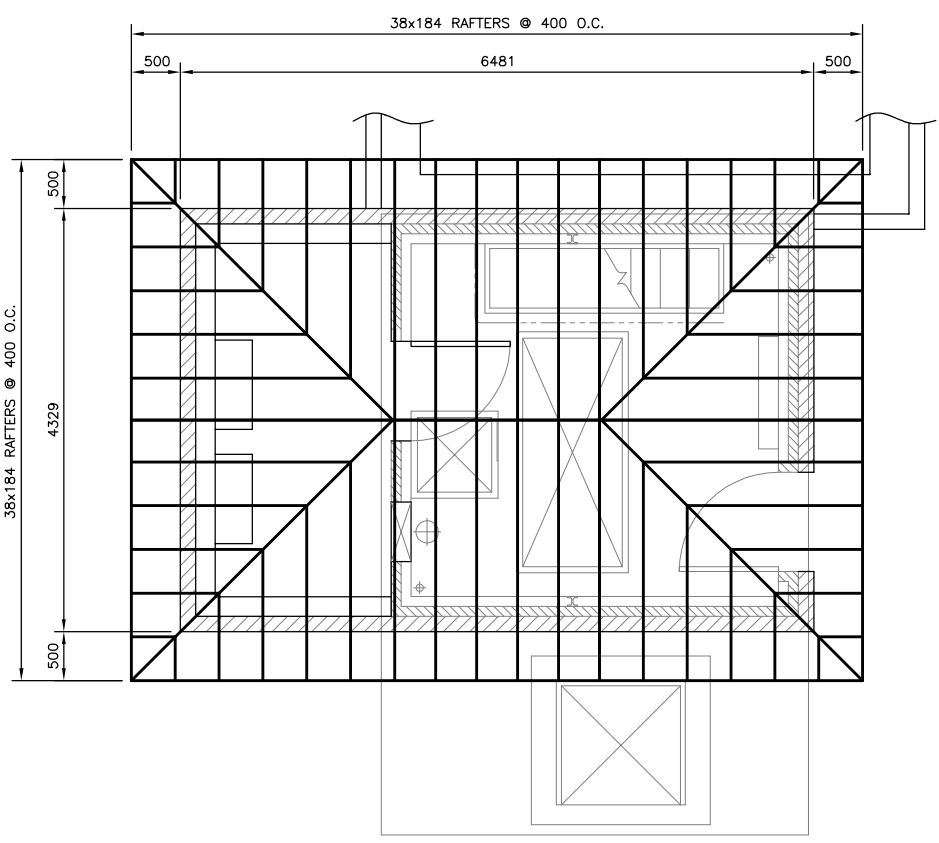
**1 NORTH ELEVATION**  
SCALE: 1:40



**2 SOUTH ELEVATION**  
SCALE: 1:40



**3 WEST ELEVATION**  
SCALE: 1:40



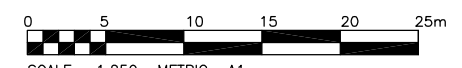
**4 ROOF FRAMING PLAN**  
SCALE: 1:40

**WARNING**

IF POWER EQUIPMENT OR EXPLOSIVES ARE TO BE USED FOR EXCAVATION ON THIS PROJECT THE CONTRACTOR MUST:  
1) NOTIFY THE GAS COMPANY OF THE PROPOSED LOCATION OF EXCAVATION.  
2) TAKE PRECAUTION TO AVOID DAMAGE TO GAS COMPANY INSTALLATIONS.  
SEE PROVINCIAL REGULATION 210/72 FOR DETAILS.

**METRIC**

WHOLE NUMBERS INDICATE MILLIMETRES  
DECIMALIZED NUMBERS INDICATE METRES



SCALE: 1:250 METRIC A1  
1:500 METRIC A3



B.M. XX-XXX ELEV. XXX.XXX		<b>KGS GROUP</b> CONSULTING ENGINEERS & PROJECT MANAGERS WINNIPEG (204) 896-1209 THUNDER BAY (807) 345-2233	ENGINEER'S SEAL	<b>THE CITY OF WINNIPEG</b> WATER & WASTE DEPARTMENT	SHEET <b>08</b> OF <b>24</b>
DESIGNED BY: CMS	CHECKED BY: CMS		ORIGINAL DRAWING SIGNED BY: C. SIEPMAN		
DRAWN BY: EDC	APPROVED BY:	SCALE: AS NOTED	05/12/07	<b>HAWTHORNE FLOOD PUMPING STATION UPGRADE</b>	CAD FILE DRAWING NUMBER: 05-0107-13-08
ISSUED FOR CONSTRUCTION 05/12/07 CMS	RELEASED FOR CONSTRUCTION:	DATE 05/11/08	DATE:		<b>STRUCTURAL-SUPERSTRUCTURE GENERAL ARRANGEMENT</b>
NO. REVISIONS	DATE	BY	DATE	CONSULTANT DRAWING NO. 05-0107-13-08	