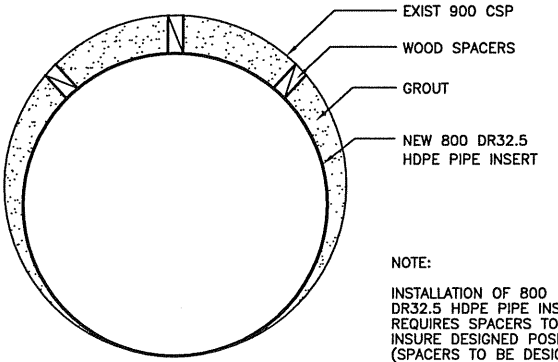


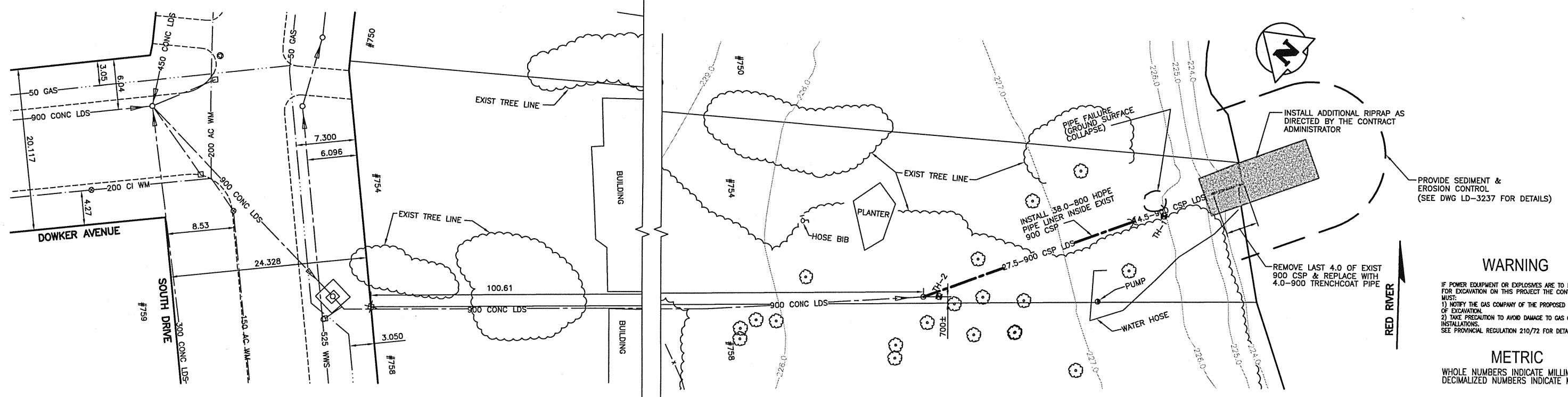
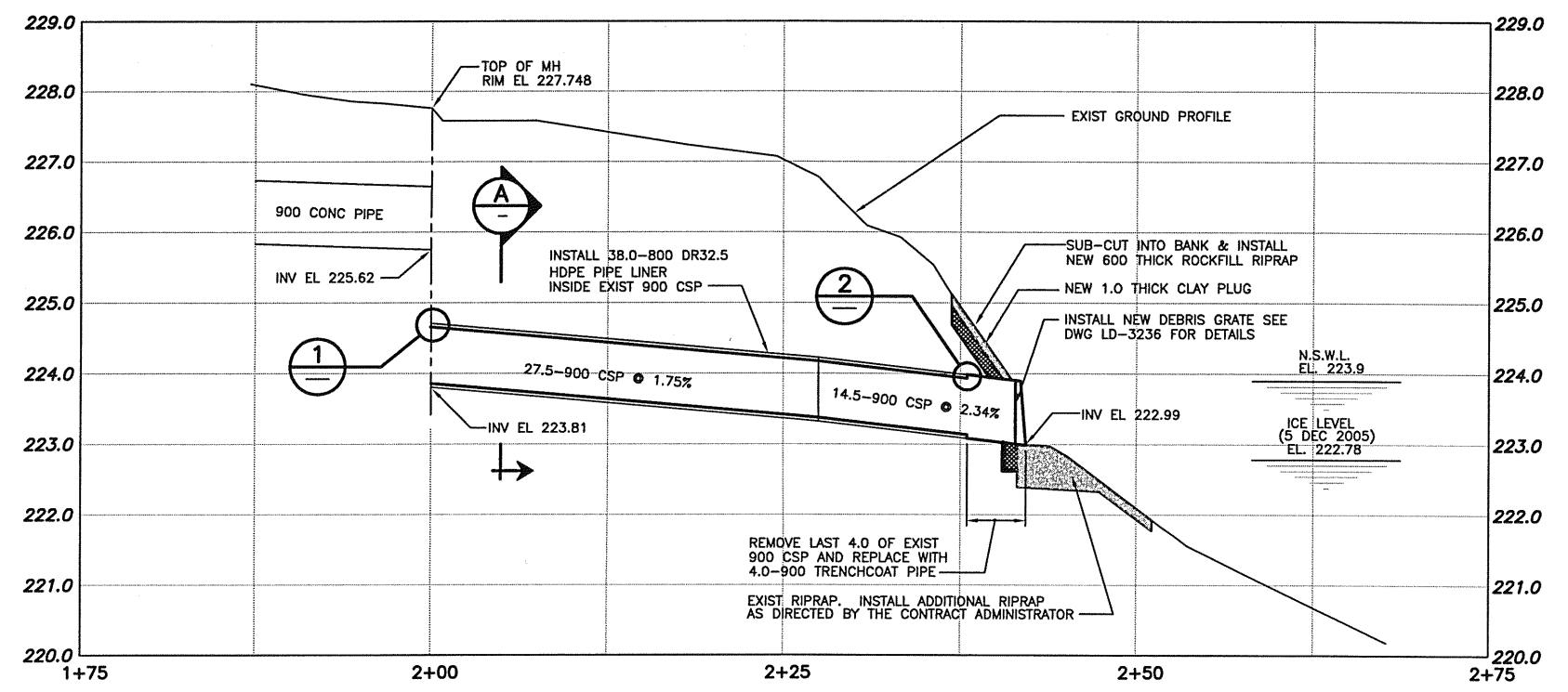
1 DETAIL
SCALE: 1:5

2 DETAIL
SCALE: 1:5



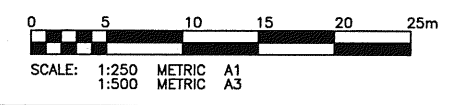
A SECTION
SCALE: 1:10

NOTE:
INSTALLATION OF 800 DR32.5 HDPE PIPE INSERT REQUIRES SPACERS TO INSURE DESIGNED POSITION. (SPACERS TO BE DESIGNED BY THE CONTRACTOR)



WARNING
IF POWER EQUIPMENT OR EXPLOSIVES ARE TO BE USED FOR EXCAVATION ON THIS PROJECT THE CONTRACTOR MUST:
1) NOTIFY THE GAS COMPANY OF THE PROPOSED LOCATION OF EXCAVATION.
2) TAKE PRECAUTION TO AVOID DAMAGE TO GAS COMPANY INSTALLATIONS.
SEE PROVINCIAL REGULATION 210/72 FOR DETAILS.

METRIC
WHOLE NUMBERS INDICATE MILLIMETRES
DECIMALIZED NUMBERS INDICATE METRES



APECM
Certificate of Authorization
KGS Group
No. 245 Expiry: April 30, 2008

DOWKER AVENUE RR-28

EXISTING	LEGEND-PLAN	PROPOSED	EXISTING	LEGEND-PLAN	PROPOSED	EXISTING	LEGEND-PROFILE	PROPOSED
150 WM	WATERMAIN	150 WM	HYDRO	M.T.S.				
300 LDS	LAND DRAINAGE SEWER	300 LDS	PROPERTY LINE	SURVEY BAR				
250 WWS	WASTE WATER SEWER	250 WWS	LIGHT STANDARD	HYDRO POLE				
○	MANHOLE	●	GUY WIRE	SIGN				
□	CATCH BASIN	■	BUSH LINE	FENCE				
○	CURB INLET	○	ELEVATION	(32.231)				
▽	JUNCTIONS							
▽	CULVERT							
---	GAS							

LOCATION APPROVED UNDERGROUND STRUCTURES

SUPV. U/G STRUCTURES COMMITTEE	DATE

NOTE:
LOCATION OF UNDERGROUND STRUCTURES AS SHOWN ARE BASED ON THE BEST INFORMATION AVAILABLE BUT NO GUARANTEE IS GIVEN THAT ALL EXISTING UTILITIES ARE SHOWN OR THAT THE GIVEN LOCATIONS ARE EXACT. CONFIRMATION OF EXISTENCE AND EXACT LOCATION OF ALL SERVICES MUST BE OBTAINED FROM THE INDIVIDUAL UTILITIES BEFORE PROCEEDING WITH CONSTRUCTION.

B.M. 64-040 ELEV. 231.890m
848591 - N. SIDE DOWKER AVE. @ SOUTH DR. TRF. ON TOP OF 0.05 m DIA. x 2.4 m RISE PIPE, 1.5 m S. OF N.E. CORNER OF DOWKER AVE. @ 8.2m E. OF W.L. OF SOUTH DR.

KGS GROUP
CONSULTING ENGINEERS & PROJECT MANAGERS
WINNIPEG (204) 896-1209
THUNDER BAY (807) 345-2233

DESIGNED BY	RJH	CHECKED BY	RJH
DRAWN BY	DMW	APPROVED BY	
ISSUED FOR TENDER	06/12/05	RJH	
ISSUED FOR REVIEW	25/11/05	RJH	
NO. REVISIONS	DATE	BY	DATE
	12/09/05		

HOR. SCALE: 1:250
VERTICAL: 1:50

RELEASED FOR CONSTRUCTION: _____
DATE: _____

ENGINEER'S SEAL
PROVINCE OF MANITOBA
R.J. HOUSTON
Member
4365
REGISTERED PROFESSIONAL ENGINEER

CONSULTANT DRAWING NO.
05-0107-11_07

THE CITY OF WINNIPEG
WATER & WASTE DEPARTMENT

Winnipeg

OUTFALL REPAIRS

DOWKER AVENUE
OUTFALL (RR-28)

SHEET **07** OF **10**
CAD FILE DRAWING NUMBER **05-0107-11**
CITY DRAWING NUMBER **LD-3234**

COWLEND