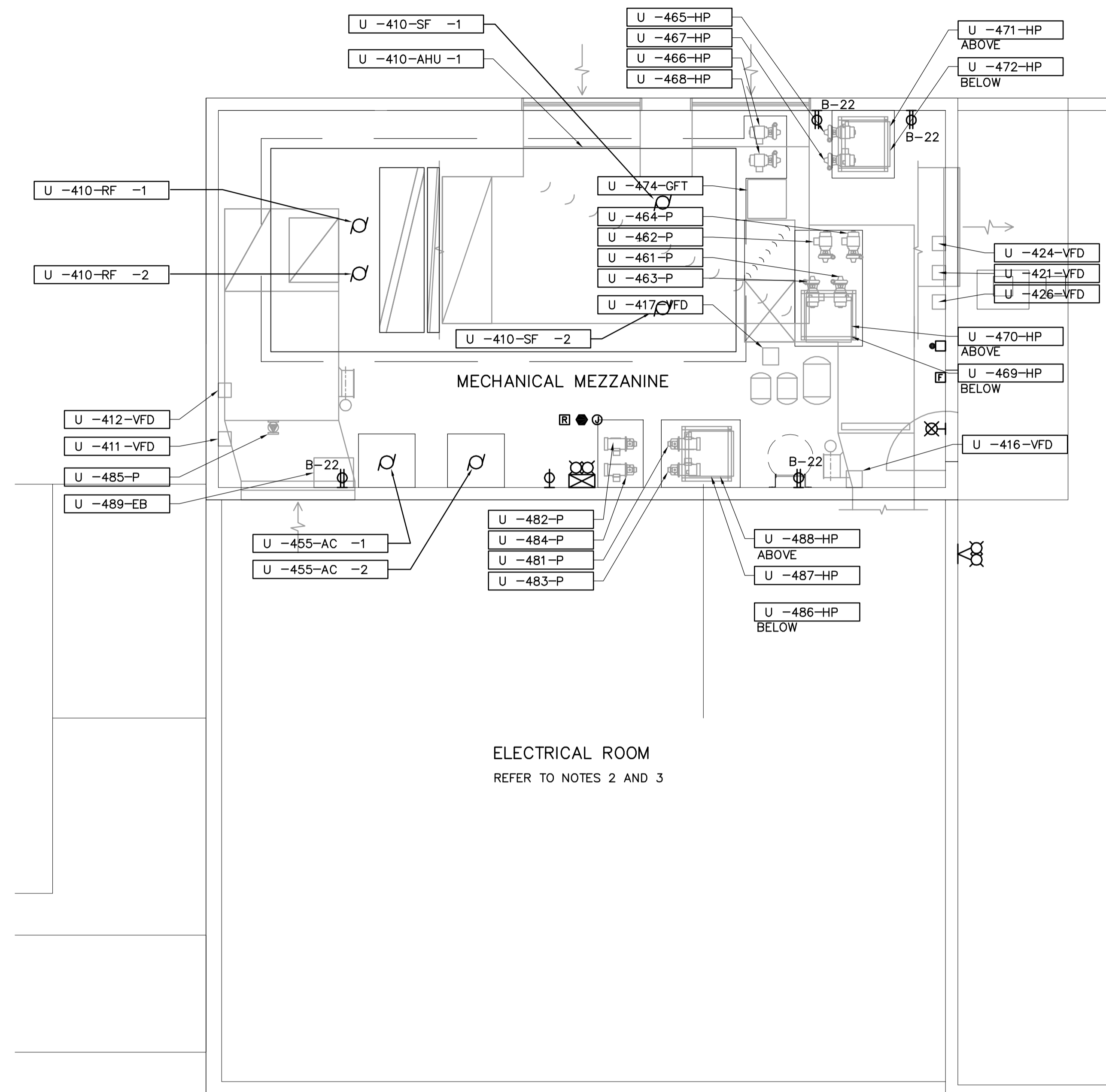


MEZZANINE FLOOR PLAN – LIGHTING
SCALE 1:50

NOTES:

1. MOUNT FIXTURES AT 5000mm A.F.F. TO LIGHT THE CEILING.
2. REFER TO MOTOR & PANEL SCHEDULES IN SPECIFICATION FOR ELECTRICAL INFORMATION ASSOCIATED WITH MECHANICAL AND PROCESS EQUIPMENT.
3. REFER TO MECHANICAL DRAWING FOR LOCATION OF ALL MECHANICAL MOTORS AND ASSOCIATED EQUIPMENT.
4. REFER TO DRAWING E1.03 FOR LUMINAIRE SCHEDULE.
5. VFD UNITS FOR HVAC EQUIPMENT TO BE SUPPLIED UNDER DIVISION 15 AND INSTALLED UNDER DIVISION 16.



MEZZANINE FLOOR PLAN – POWER
SCALE 1:50

B.M. ELEV.	EARTH TECH <small>Earth Tech (Canada) Inc. Winnipeg, Manitoba 204.477.5381</small>		ENGINEER'S SEAL	THE CITY OF WINNIPEG Winnipeg WATER AND WASTE DEPARTMENT				
	DESIGNED BY: GSN	CHECKED BY: PS	ORIGINAL SIGNED BY: P. STRYK					
	DRAWN BY: CPG	APPROVED BY: DT	FEB. 18/05					
	HOR. SCALE: 1:50 VERTICAL SCALE: 1:50		RELEASED FOR CONSTRUCTION BY: T. KJARTANSON		CONSULTANT DRAWING NO. 66303D-CE1.05			
0	ISSUED FOR TENDER	05/02/18	JEH	DATE: 2005/01/05	DATE: 2005-02-18	NEWPCC - SECONDARY EFFLUENT UV DISINFECTION FACILITY		CITY FILE NUMBER
NO. REVISIONS		DATE	BY	DATE	DATE	ELECTRICAL MEZZANINE PLANS LIGHTING, LIGHTING SYSTEMS, SECURITY AND POWER		SHEET # OF #S
							CITY DRAWING NUMBER	