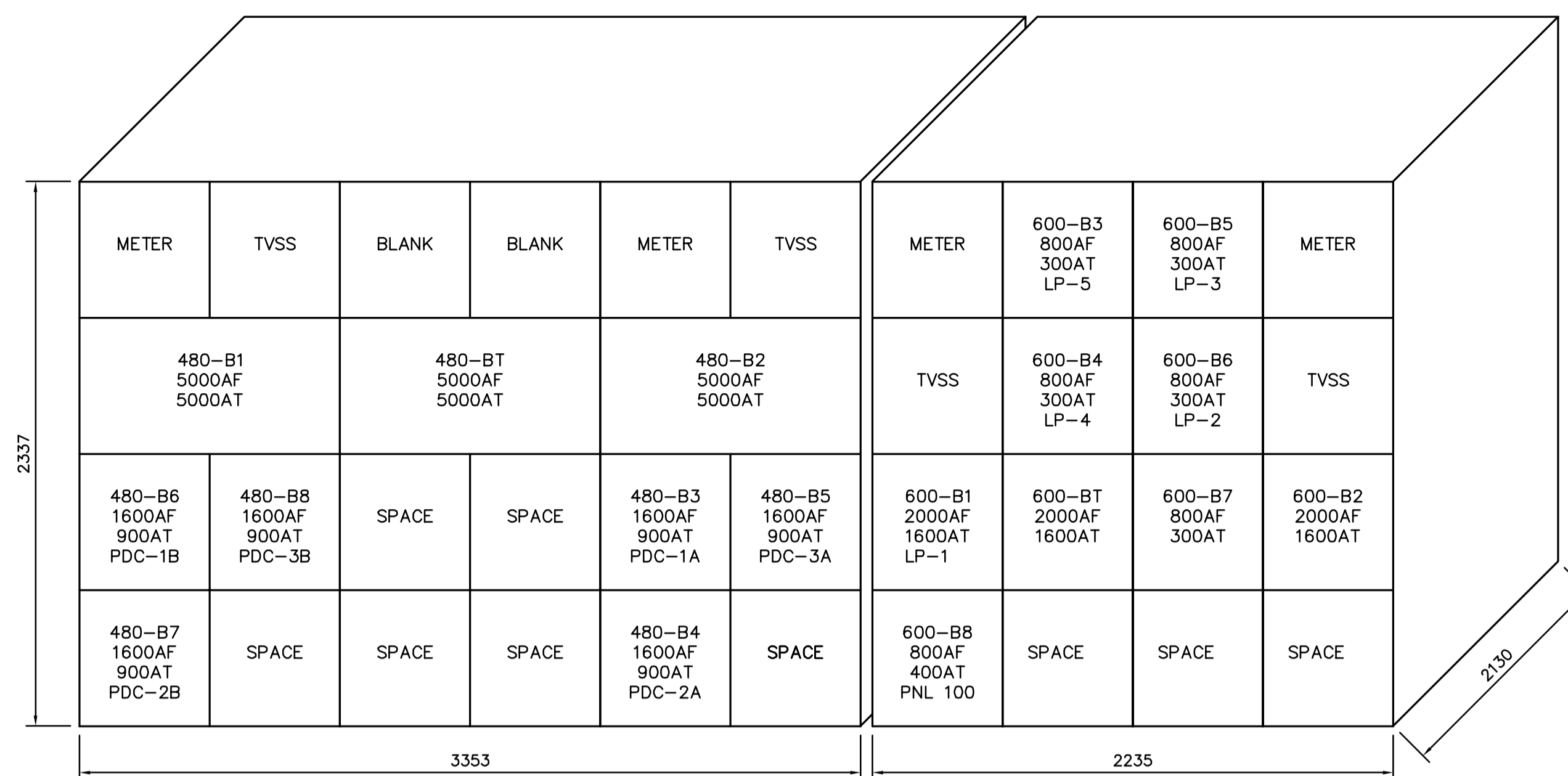


1 ELEVATION - 5kV SWITCHGEAR
E2.02 SCALE 1:20

NOTE:

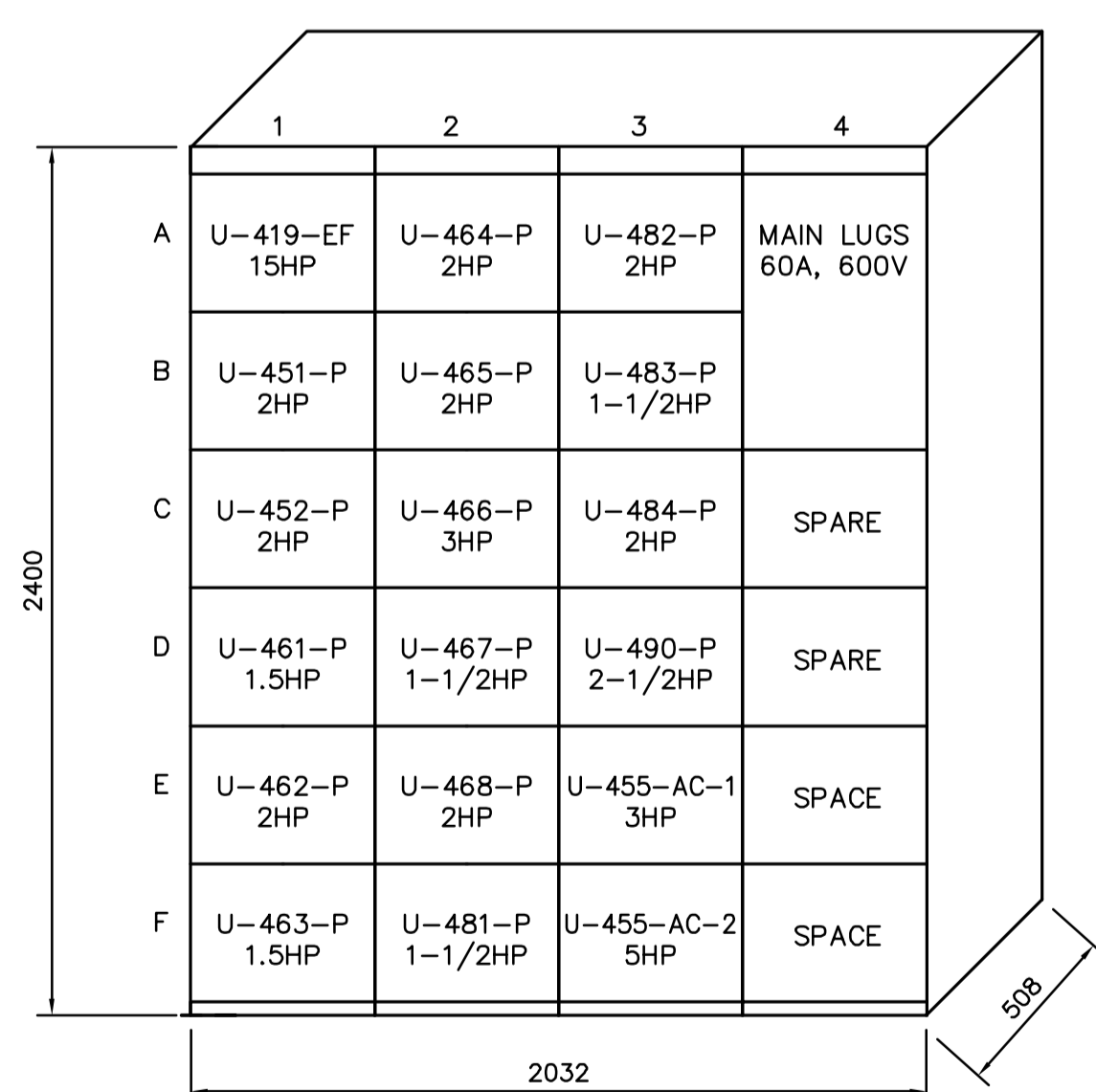
- 1. REFER TO DIVISION 16 SPECIFICATIONS FOR LABELING REQUIREMENTS.
- * REFER TO DETAIL 4
- ** REFER TO DETAIL 5



2 ELEVATION - 277/480V SWITCHGEAR, 600V SWITCHGEAR
E2.02 SCALE 1:20

NOTE:

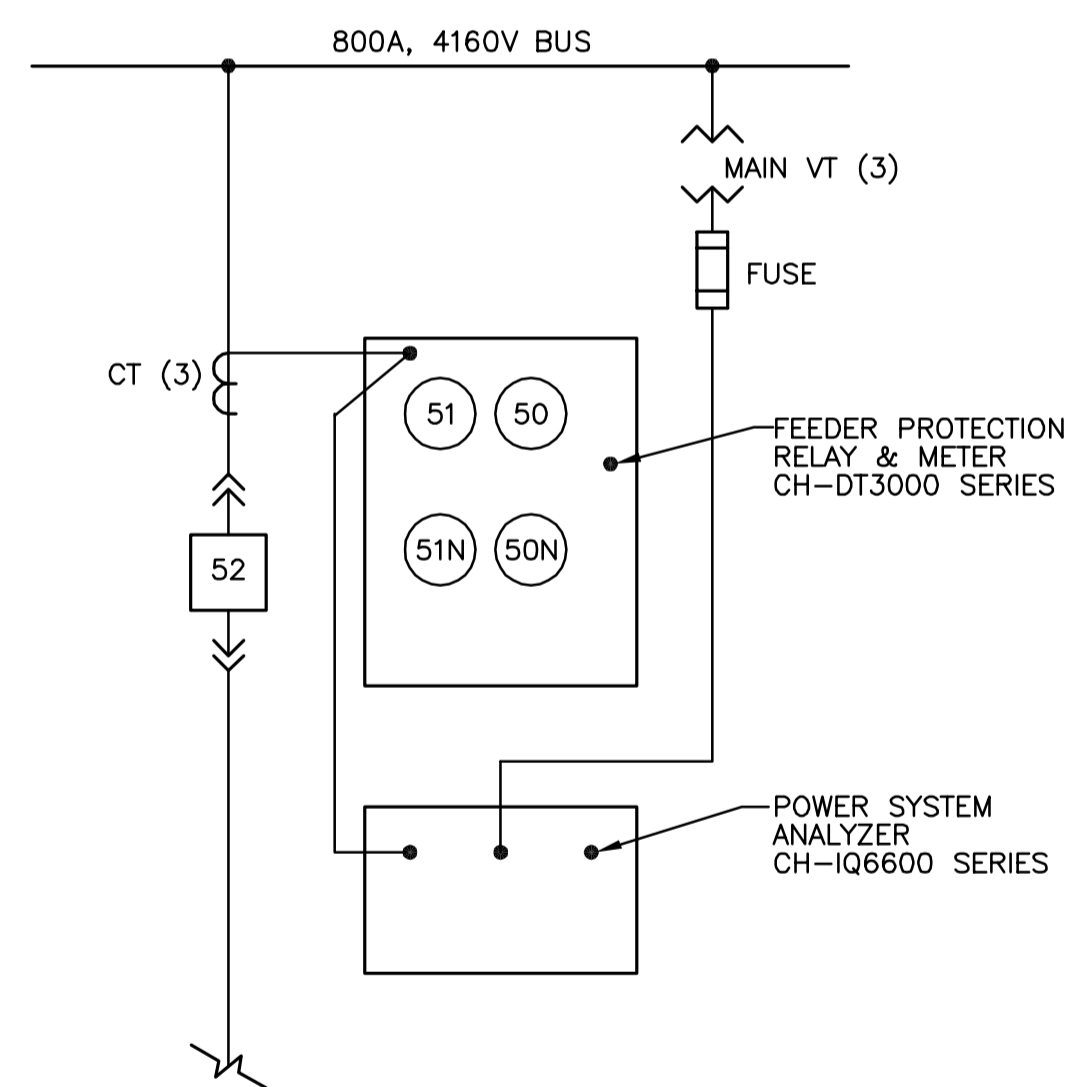
- 1. REFER TO DIVISION 16 SPECIFICATIONS FOR LABELING REQUIREMENTS.



3 ELEVATION - MOTOR CONTROL CENTRE
E2.02 SCALE 1:20

NOTE:

- 1. REFER TO DIVISION 16 SPECIFICATIONS FOR LABELING REQUIREMENTS.

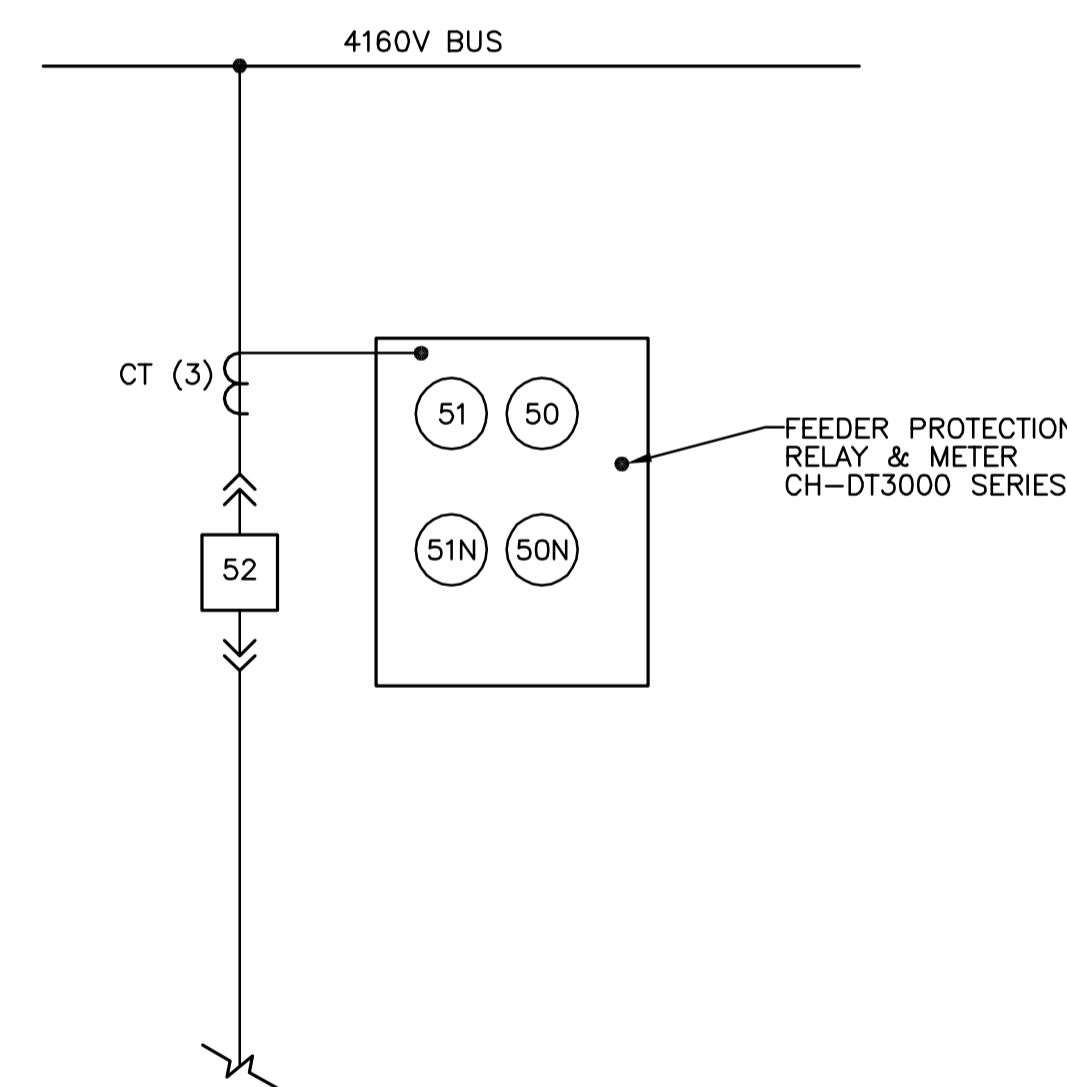


4 FEEDER PROTECTION RELAY AND POWER SYSTEM ANALYZER
E2-03 SCALE N.T.S.

NOTE:

- 1. DETAIL APPLICABLE TO BREAKERS: REFER TO SINGLE LINE DRAWING E2.01:

52-LST4
52-LST5
52-UVT2
52-UVT3



5 FEEDER PROTECTION RELAY
E2-03 SCALE N.T.S.

NOTE:

- 1. DETAIL APPLICABLE TO BREAKERS: REFER TO SINGLE LINE DRAWING E2.01:

52-F7
52-L1
52-T
52-L2



B.M. ELEV.	EARTH TECH		ENGINEER'S SEAL ORIGINAL SIGNED BY P. STRYK FEB. 18/05	THE CITY OF WINNIPEG Winnipeg WATER AND WASTE DEPARTMENT	
	Earth Tech (Canada) Inc. Winnipeg, Manitoba 204.477.5381			NEWPCC - SECONDARY EFFLUENT UV DISINFECTION FACILITY	
DESIGNED BY GNS	CHECKED BY PS	CONSULTANT DRAWING NO. 66303D-CE2.03		CITY FILE NUMBER	
DRAWN BY ERC	APPROVED BY DT	RELEASED FOR CONSTRUCTION BY: T. KJARTANSON		SHEET # OF #S	
HOR. SCALE: 1:20 VERTICAL SCALE: 1:20		DATE 2005/01/06		CITY DRAWING NUMBER	
NO. REVISIONS		DATE		ELECTRICAL DISTRIBUTION ELEVATIONS	
0 ISSUED FOR TENDER		05/02/18 JEH			