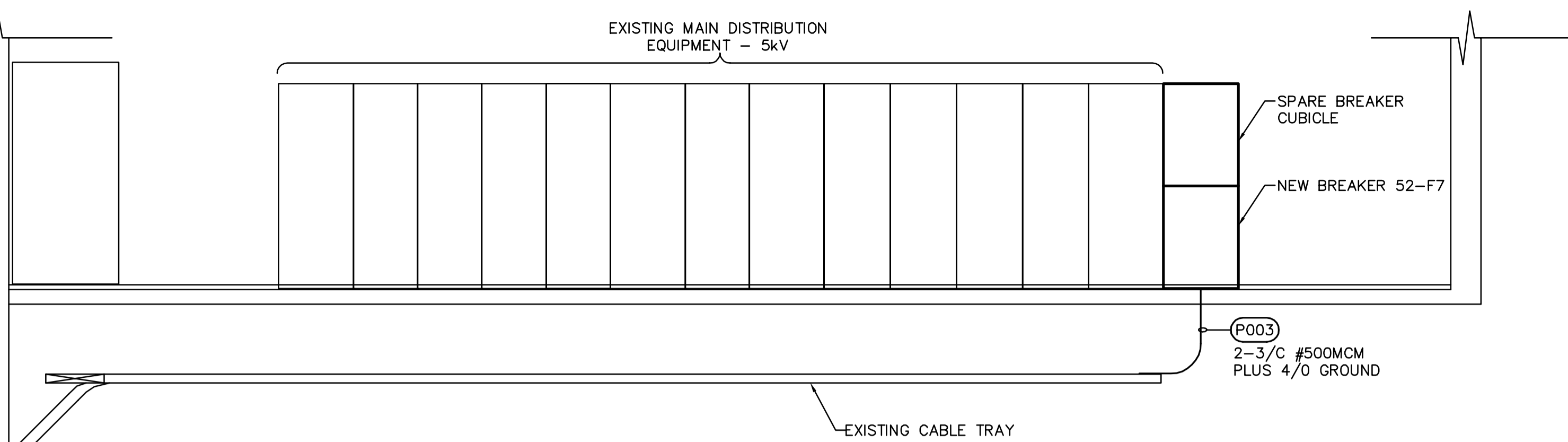
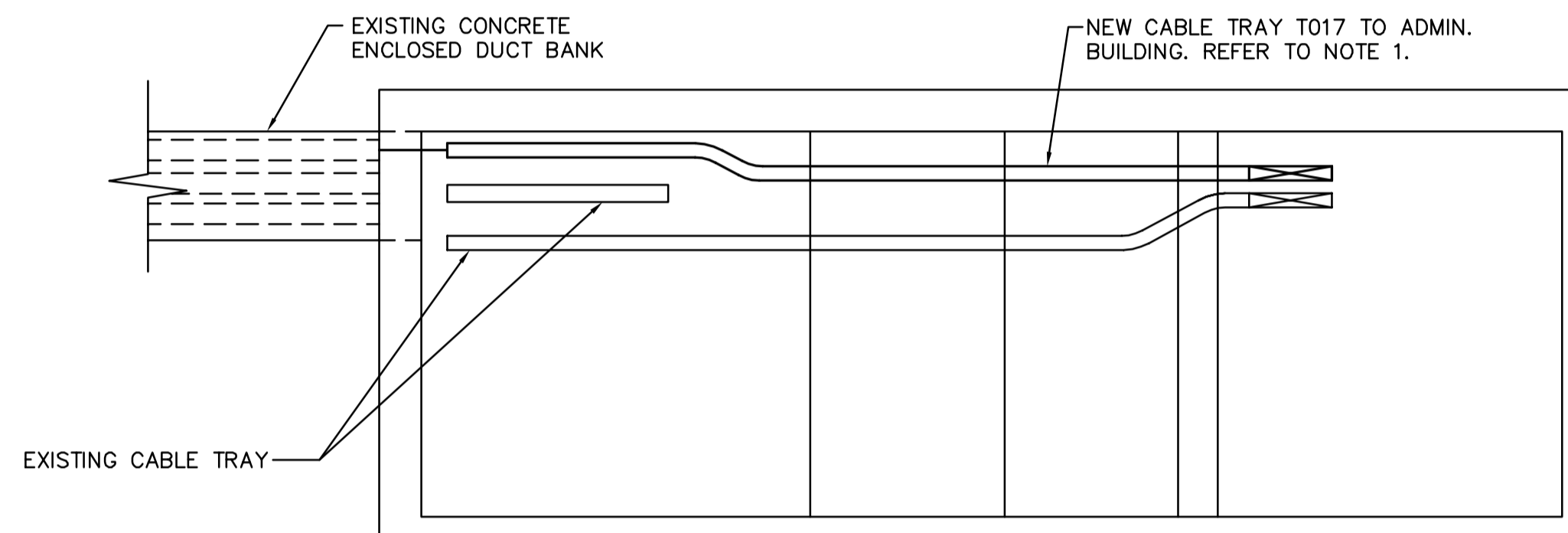


**2 SECTION**  
E2.02 SCALE NOT TO SCALE

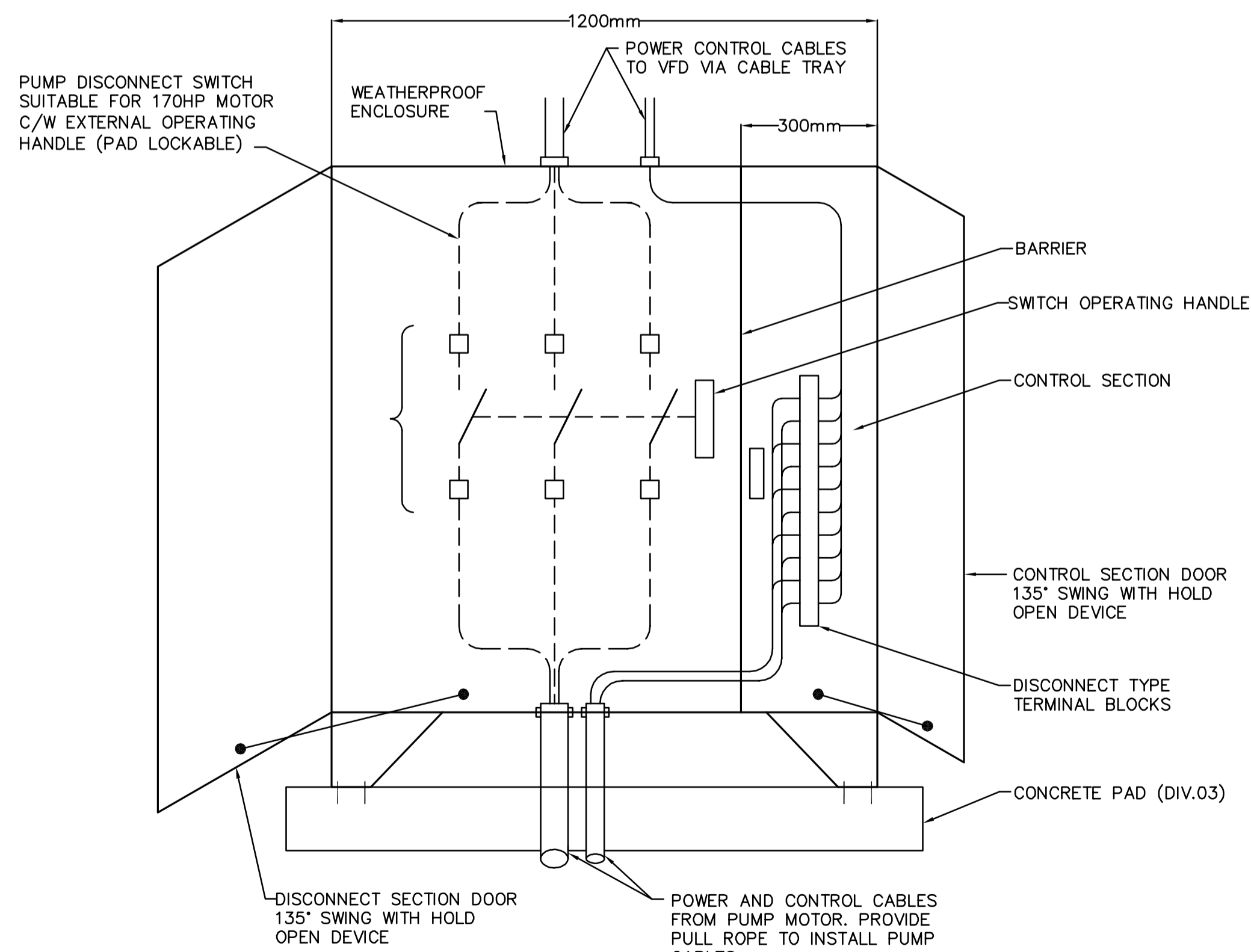


**1 ELEVATION - EXISTING GRIT BUILDING MAIN DISTRIBUTION AND CABLE TRAY**  
E1.01 SCALE NOT TO SCALE



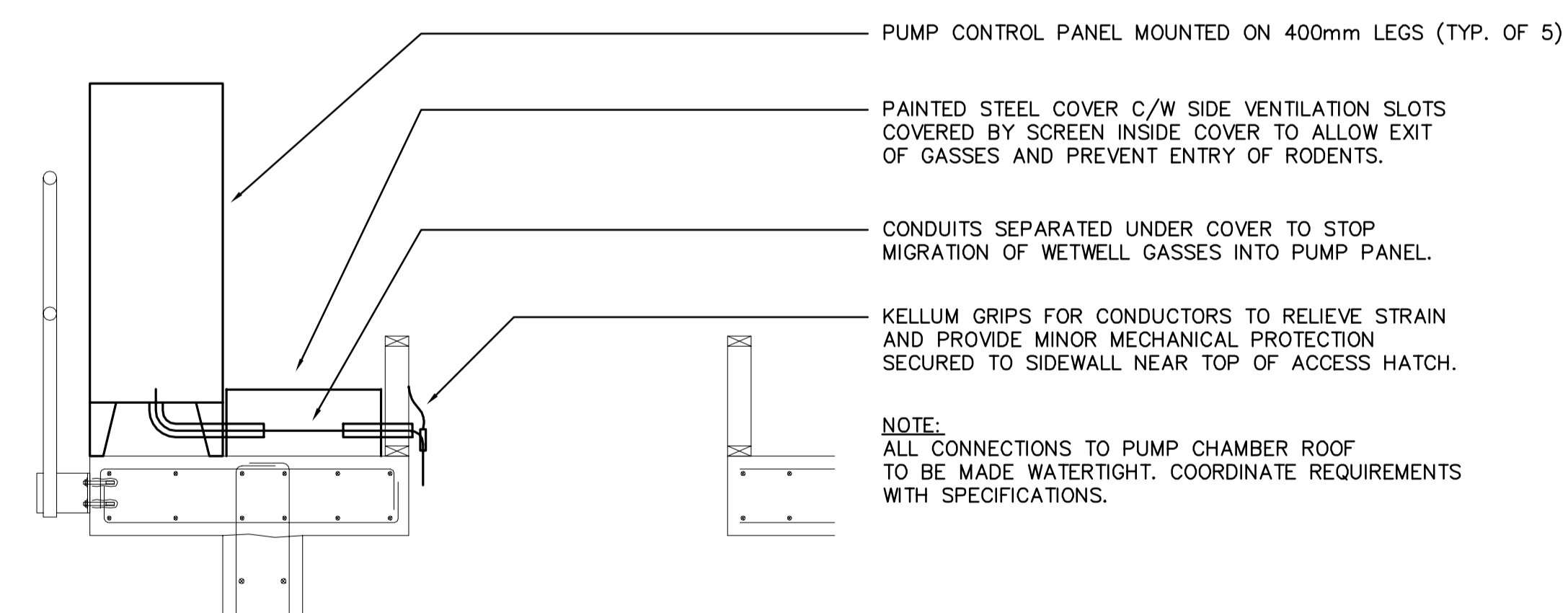
**2 SECTION A - EAST END GRIT BUILDING (GALLERY 1)**  
E1.01 SCALE NOT TO SCALE

**NOTE**  
1. REFER TO DRAWING E1-01 AND RACEWAY SCHEDULES FOR CONTINUATION OF CABLE TRAY



**1 PUMP POWER AND CONTROL CONNECTION PANEL**  
E2.02 SCALE NOT TO SCALE

**NOTE**  
1. DISCONNECT PUMP SWITCH TO BE SIZED TO PUMP MOTOR RATED HORSE POWER  
2. CONTROL SECTION TO BE COMPLETE WITH DISCONNECT TERMINAL BLOCKS AS REQUIRED BY PUMP MANUFACTURER (REFER TO SPECIFICATION SECTION 11).



**2 PUMP PANEL WIRING DISCONNECTION/RE-CONNECTION DETAIL**  
E2.02 SCALE NOT TO SCALE

**NOTE:**  
ALL CONNECTIONS TO PUMP CHAMBER ROOF TO BE MADE WATERTIGHT. COORDINATE REQUIREMENTS WITH SPECIFICATIONS.

B.M. ELEV.	<b>EARTH TECH</b>		ENGINEER'S SEAL ORIGINAL SIGNED BY P. STRYK FEB. 18/05	<b>THE CITY OF WINNIPEG</b> Winnipeg WATER AND WASTE DEPARTMENT	
	<small>Earth Tech (Canada) Inc. Winnipeg, Manitoba 204.477.5381</small>			<b>NEWPCC - SECONDARY EFFLUENT UV DISINFECTION FACILITY</b>	
DESIGNED BY G.S.N.	CHECKED BY P.S.	CONSULTANT DRAWING NO. 66303D-CE2.04		CITY FILE NUMBER	
DRAWN BY E.R.C.	APPROVED BY D.T.	RELEASED FOR CONSTRUCTION BY: T. KJARTANSON		SHEET # OF #S	
HOR. SCALE: AS NOTED VERTICAL SCALE: AS NOTED		DATE: 2005/01/04		CITY DRAWING NUMBER	
NO. REVISIONS		DATE BY		ELECTRICAL DISTRIBUTION DETAILS	
0 ISSUED FOR TENDER		05/02/18 JEH			