

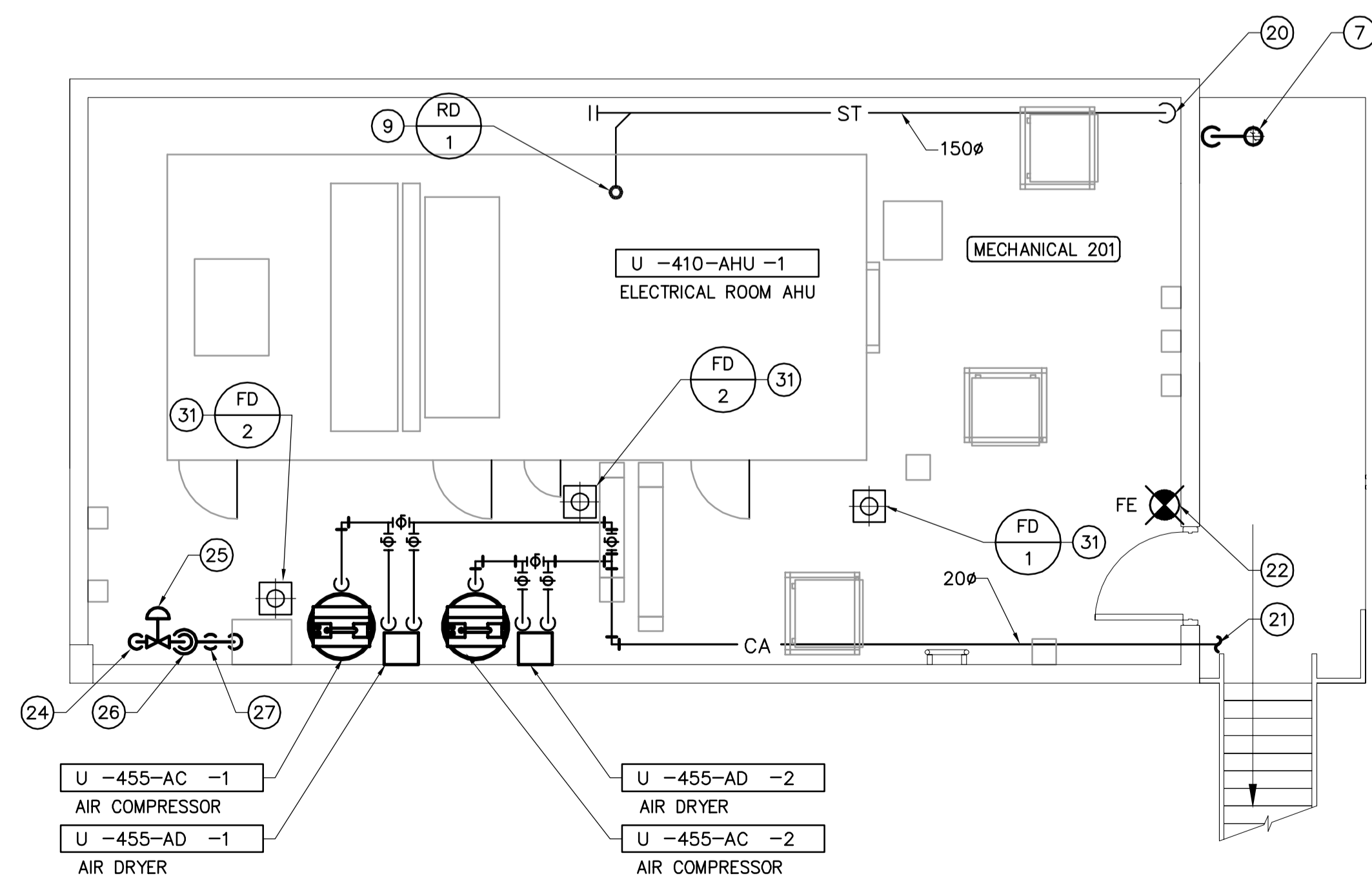
1 MAIN FLOOR PLUMBING PLAN
M2.01 SCALE 1:50

DRAWING NOTES

- ① 40ø DCW SUPPLY PIPE UP THRU SLAB. SEE ENTRY DETAIL AND SCHEMATIC ON DWG CM7.01. REFER TO UNDERGROUND SERVICES DRAWINGS.
- ② SANITARY PIPE DOWN TO BELOW MAIN FLOOR. SIZE AS SHOWN.
- ③ 50ø CONDENSATE DRAIN FROM U-420-AHU-1.
- ④ SANITARY PIPE ENCASED IN CONCRETE AS PART OF SLAB. REFER TO STRUCTURAL DRAWINGS. SLOPE AS SHOWN.
- ⑤ 150ø SANITARY PIPE. CONNECT INTO SITE SEWER SYSTEM. MINIMUM INVERT ELEVATION TO BE 3.36M BELOW FINISHED FLOOR. REFER TO UNDERGROUND SERVICES DRAWINGS.
- ⑥ RWL DOWN FROM MEZZANINE JOIST SPACE.
- ⑦ VENT STACK RISING THRU ROOF. SIZE OF RISER SHOWN. INCREASE RISER SIZE BY MINIMUM OF 1 PIPE SIZE AT ROOF PENETRATION. INSULATE RISER 1M DOWN FROM ROOF PENETRATION.
- ⑧ 15ø TEMPERED WATER TO EYE WASH (MAX. TEMP=95°F/35°C).
- ⑨ COORDINATE ROOF DRAIN LOCATIONS WITH ARCHITECTURAL. REFER TO ARCHITECTURAL DRAWINGS.
- ⑩ 10ø CA SERVICE RUNNING BELOW GRADE TO EFFLUENT SAMPLING BLDG. UNDERGROUND PIPING TO BE TYPE 'K' COPPER. MINIMUM 900mm BELOW GRADE. SEE DWG CM1.02.
- ⑪ CAP FOR FUTURE CONNECTION.
- ⑫ RWL TO RUN AT HIGH LEVEL BELOW ROOF DECK.
- ⑬ 200ø RAIN WATER LEADER DOWN THRU FLOOR. SLEEVE THRU FLOOR. SEE DETAIL ON DWG CM7.01.
- ⑭ 50ø FLUSHING WATER SUPPLY FROM EFFLUENT CHAMBER BELOW. SEE DETAIL ON DWG CM7.01.
- ⑮ 50ø FLUSHING WATER DISCHARGE TO HR-1.
- ⑯ 20ø DCW SERVICE CONNECTION FOR FUTURE PRESSURE WASHER SYSTEM FOR HEAT EXCHANGER CLEANING. PROVIDE DOUBLE CHECK VALVE ASSEMBLY, STRAINER, BALL VALVE, CAP AND CHAIN. MOUNT CONNECTION 1200mm A.F.F.
- ⑰ 20ø COMPRESSED AIR FROM MEZZANINE MECHANICAL ROOM. SEE MEZZANINE LEVEL PLAN ON THIS SHEET.
- ⑱ CA LINES DOWN TO QUICK CONNECTS FOR IMPACT WRENCHES. CONFIRM EXACT CITY OF WINNIPEG REQUIREMENTS. SEE DETAILS ON DWG CM7.02. -TYPICAL OF 2.
- ⑲ 20ø COMPRESSED AIR OUT TO UV PROCESS AREA. RUN TIGHT TO UNDERSIDE OF ROOF DECK.
- ⑳ RWL DOWN TO MAIN FLOOR JOIST SPACE. SEE MAIN FLOOR PLAN FOR CONTINUATION.
- ㉑ 50ø FLUSHING WATER DISCHARGE TO HR-1.
- ㉒ TYPICAL FIRE EXTINGUISHER.
- ㉓ TRANSITION SANITARY TO 150ø BEFORE EXISTING BUILDING.
- ㉔ 15ø DCW RISING TO TRAP PRIMER HEADER IN MEZZ. MECHANICAL ROOM.
- ㉕ SOLENOID VALVE (N.C.) OPENED BY DCS ON TIMER CYCLE.
- ㉖ 30ø FUNNEL OPENING IN TRAP PRIMER HEADER. PROVIDE AIR GAP BETWEEN FUNNEL OPENING AND 15ø DCW FEED LINE.
- ㉗ 15ø TRAP PRIMER HEADER. MOUNT TRAP PRIMER HEADER UNDER ELECTRIC BOILER.
- ㉘ CONNECT 15ø PIPING FROM TRAP PRIMER CONNECTIONS TO EACH FLOOR DRAIN.
- ㉙ DOWN FROM FLOOR DRAIN ABOVE.
- ㉚ SEE HOT WATER TANK DETAIL ON DWG CM7.01.
- ㉛ SEE FLOOR DRAIN DETAIL ON DWG CM7.02.

GENERAL NOTES

- 1. COORDINATE WITH OTHER TRADES SO AS TO PREVENT CONFLICTS.
- 2. PROVIDE 100mm HOUSEKEEPING PADS UNDER ALL FLOOR MOUNTED AIR HANDLING EQUIPMENT, PUMPS AND AIR COMPRESSORS.
- 3. DOMESTIC RECIRCULATION PIPING TO BE INSULATED SIMILAR TO DOMESTIC HOT WATER PIPING.



2 MECHANICAL MEZZANINE PLUMBING PLAN
M2.01 SCALE 1:50



B.M. ELEV.	EARTH TECH		ENGINEER'S SEAL	THE CITY OF WINNIPEG Winnipeg WATER AND WASTE DEPARTMENT
	<small>Earth Tech (Canada) Inc. Winnipeg, Manitoba 204.477.5381</small>		ORIGINAL SIGNED BY P.V. LAITINEN FEB. 18/05	
DESIGNED BY PL	CHECKED BY AMA	CONSULTANT DRAWING NO. 66303D-CM2.01		CITY FILE NUMBER
DRAWN BY DL	APPROVED BY DT	RELEASED FOR CONSTRUCTION BY: T. KJARTANSON		SHEET 3 OF 18
HOR. SCALE: AS NOTED VERTICAL SCALE: AS NOTED		DATE 2004/12/06		CITY DRAWING NUMBER
NO. REVISIONS	DATE	BY	DATE	2005-02-18