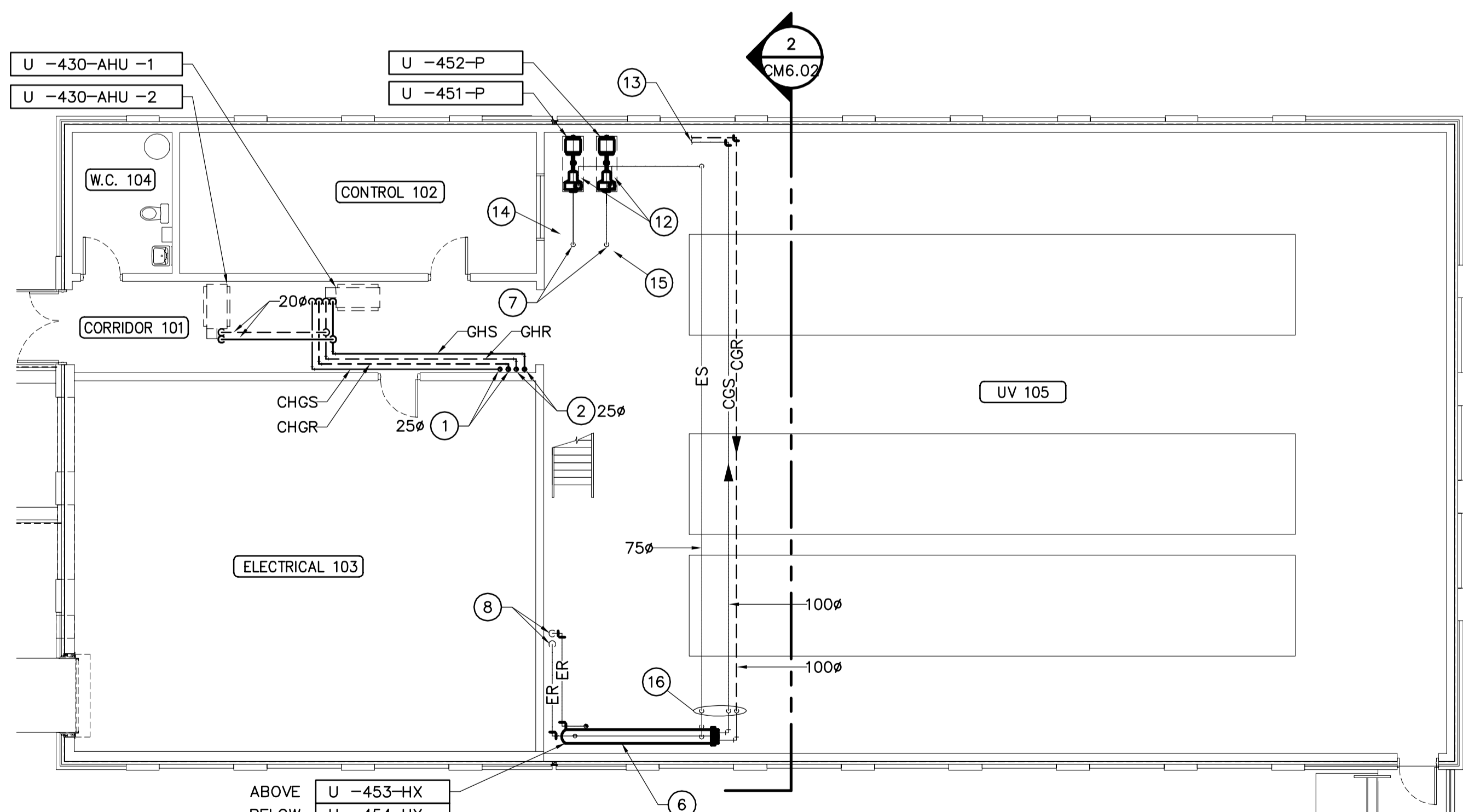


2 MEZZANINE LEVEL HYDRONICS PLAN
 M3.01 SCALE 1:30



1 MAIN FLOOR HYDRONICS PLAN
 M3.01 SCALE 1:100

DRAWING NOTES

- 1 CHS/CHR LINES TO/FROM U-430-AHU-1 BELOW. SIZES AS SHOWN.
- 2 GHS/GHR LINES TO/FROM U-430-AHU-1 AND U-430-AHU-2 BELOW. SIZES AS SHOWN.
- 3 CGS/CGR TO/FROM HEAT EXCHANGERS IN UV ROOM. SIZES AS SHOWN.
- 4 HEATING COIL LOCATED IN SUPPLY AIR DUCTWORK. SEE DWG CM5.01.
- 5 CHGS/CHGR TO/FROM UPPER AND LOWER COIL SECTIONS IN AIR HANDLING UNIT. SEE DETAIL ON DWG CM7.03. SIZES AS SHOWN.
- 6 MECHANICAL CONTRACTOR TO SUPPLY AND INSTALL STAINLESS STEEL HEAT EXCHANGER SUPPORT FRAME.
- 7 75# EFFLUENT SUCTION PIPING TO PUMPS. MECHANICAL CONTRACTOR TO COORDINATE WITH GENERAL CONTRACTOR FOR FLOOR OPENINGS IN THE MEZZANINE FLOOR TO ALLOW SUCTION PIPE REMOVAL.
- 8 75# EFFLUENT RETURN PIPING TO EFFLUENT CHANNEL.
- 9 COOLING COILS TO DRAIN TO NEAREST FLOOR DRAIN.
- 10 PRESSURE BYPASS VALVE (PBV-1) SHALL BE INSTALLED ON WALL. IT WILL CONNECT FROM THE CHILLED GLYCOL SUPPLY PIPE TO THE CHILLED GLYCOL RETURN LINE.
- 11 PRESSURE BYPASS VALVE (PBV-2) SHALL BE INSTALLED ON WALL. IT WILL CONNECT FROM THE GLYCOL HEATING SUPPLY PIPE TO THE GLYCOL HEATING RETURN LINE.
- 12 CHECK VALVE.
- 13 100# CGS AND CGR PIPING CONTINUED ON: **2 M3.01**
- 14 800x600 SAMPLING ACCESS DOOR IN FLOOR. COORDINATE WITH STRUCTURAL TO PROVIDE HOLE IN ACCESS DOOR FOR U-451-P SUCTION PIPE.
- 15 300x300 HOLE IN FLOOR FOR U-452-P SUCTION PIPE. TWO PIECE REMOVABLE PLATE SHALL BE INSTALLED TO COVER GAP BETWEEN SUCTION PIPE AND SIDES OF OPENING.
- 16 DROP HYDRONIC PIPING DOWN IN FRONT OF VENTILATION DUCT TO AVOID INTERFERENCES.
- 17 SEE COOLING COIL DETAIL ON DWG CM7.03.
- 18 WALL MOUNTED ELECTRIC BOILER. MOUNT 2M ABOVE A.F.F.
- 19 ALL INLINE CLOSE COUPLED PUMPS CAN BE INSTALLED IN A VERTICAL OR HORIZONTAL POSITION, DEPENDING ON AVAILABLE FLOOR SPACE AND WALL SPACE, NEAR HEAT PUMPS.

GENERAL NOTES

- 1. COORDINATE WITH OTHER TRADES SO AS TO PREVENT CONFLICTS.
- 2. PROVIDE 100mm HOUSEKEEPING PADS UNDER ALL FLOOR MOUNTED AIR HANDLING EQUIPMENT, PUMPS AND AIR COMPRESSORS.



B.M. ELEV.	EARTH TECH		ENGINEER'S SEAL	THE CITY OF WINNIPEG	
	Earth Tech (Canada) Inc. Winnipeg, Manitoba 204.477.5381		ORIGINAL SIGNED BY	Winnipeg WATER AND WASTE DEPARTMENT	
	DESIGNED BY: PL	CHECKED BY: AMA	P.V. LAITINEN	NEWPCC - SECONDARY EFFLUENT UV DISINFECTION FACILITY	
	DRAWN BY: DC	APPROVED BY: DT	FEB. 18/05	UV DISINFECTION FACILITY	
	HOR. SCALE: AS NOTED VERTICAL SCALE: AS NOTED		RELEASED FOR CONSTRUCTION BY: T. KJARTANSON	MECHANICAL MAIN FLOOR HYDRONICS PLAN MEZZANINE LEVEL HYDRONICS PLAN	
0	ISSUED FOR TENDER	05/02/18	JEH	CONSULTANT DRAWING NO. 66303D-CM3.01	CITY FILE NUMBER
NO. REVISIONS	DATE	BY	DATE	2005/01/04	2005-02-18
					CITY DRAWING NUMBER
					SHEET 4 OF 18