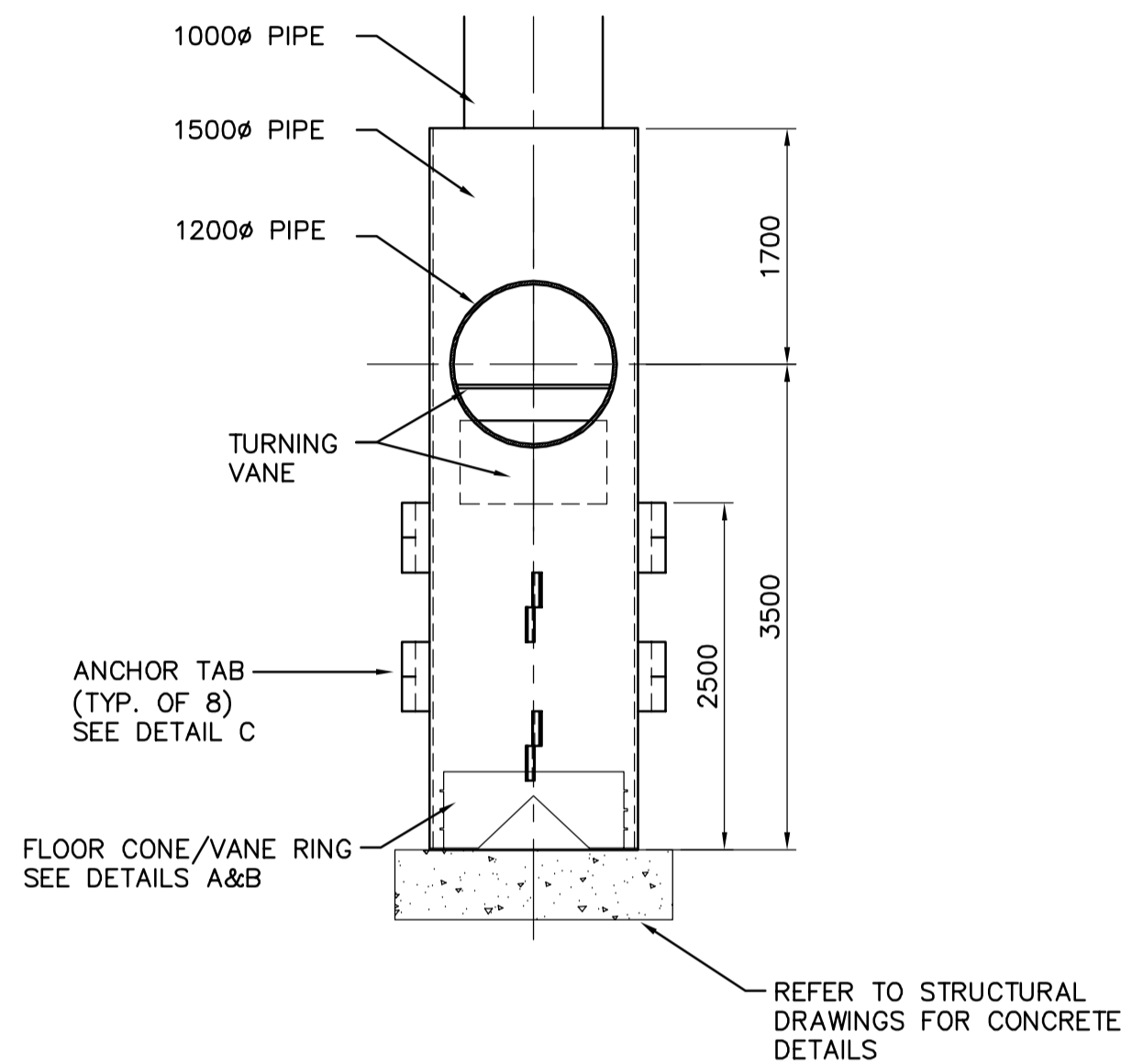
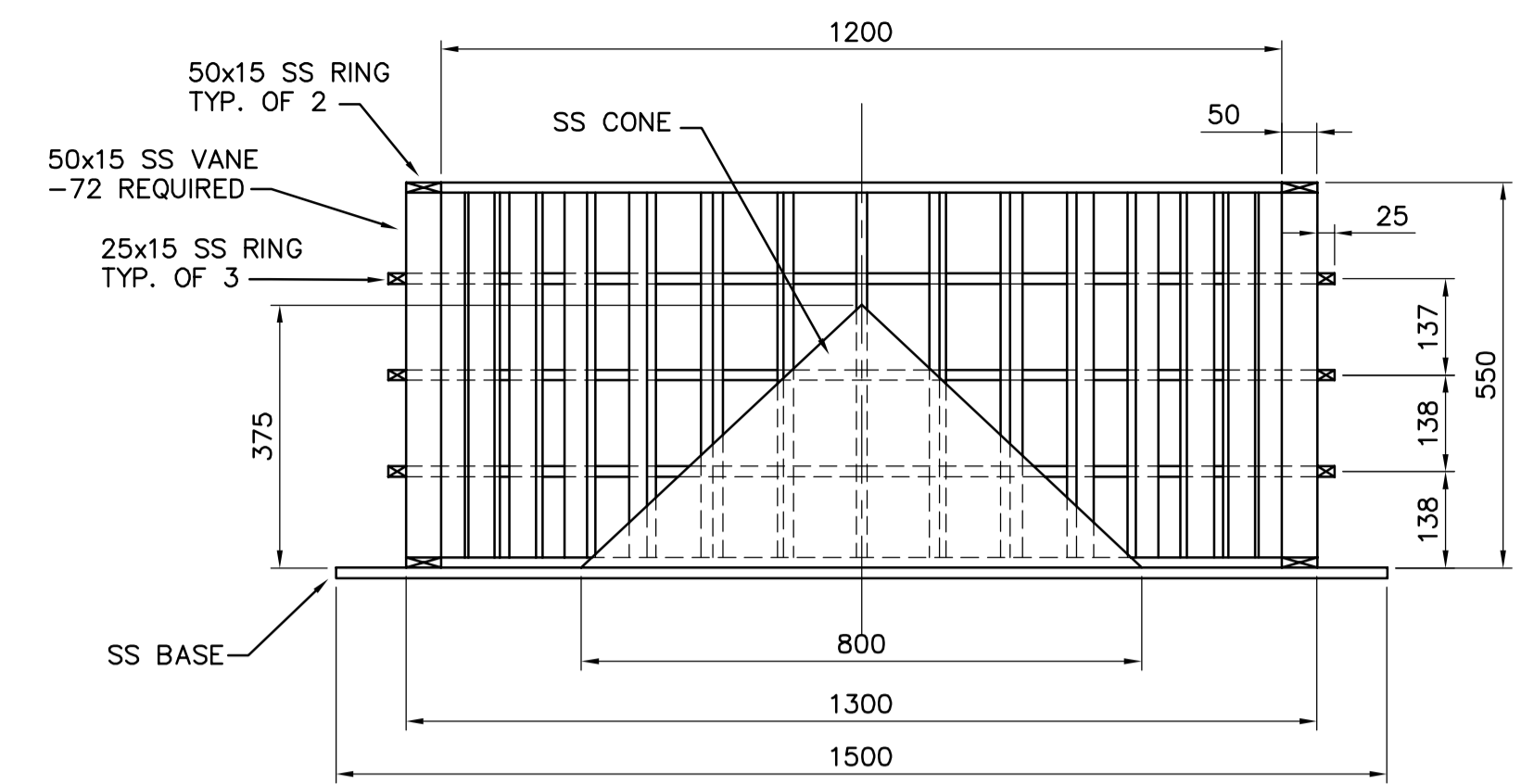


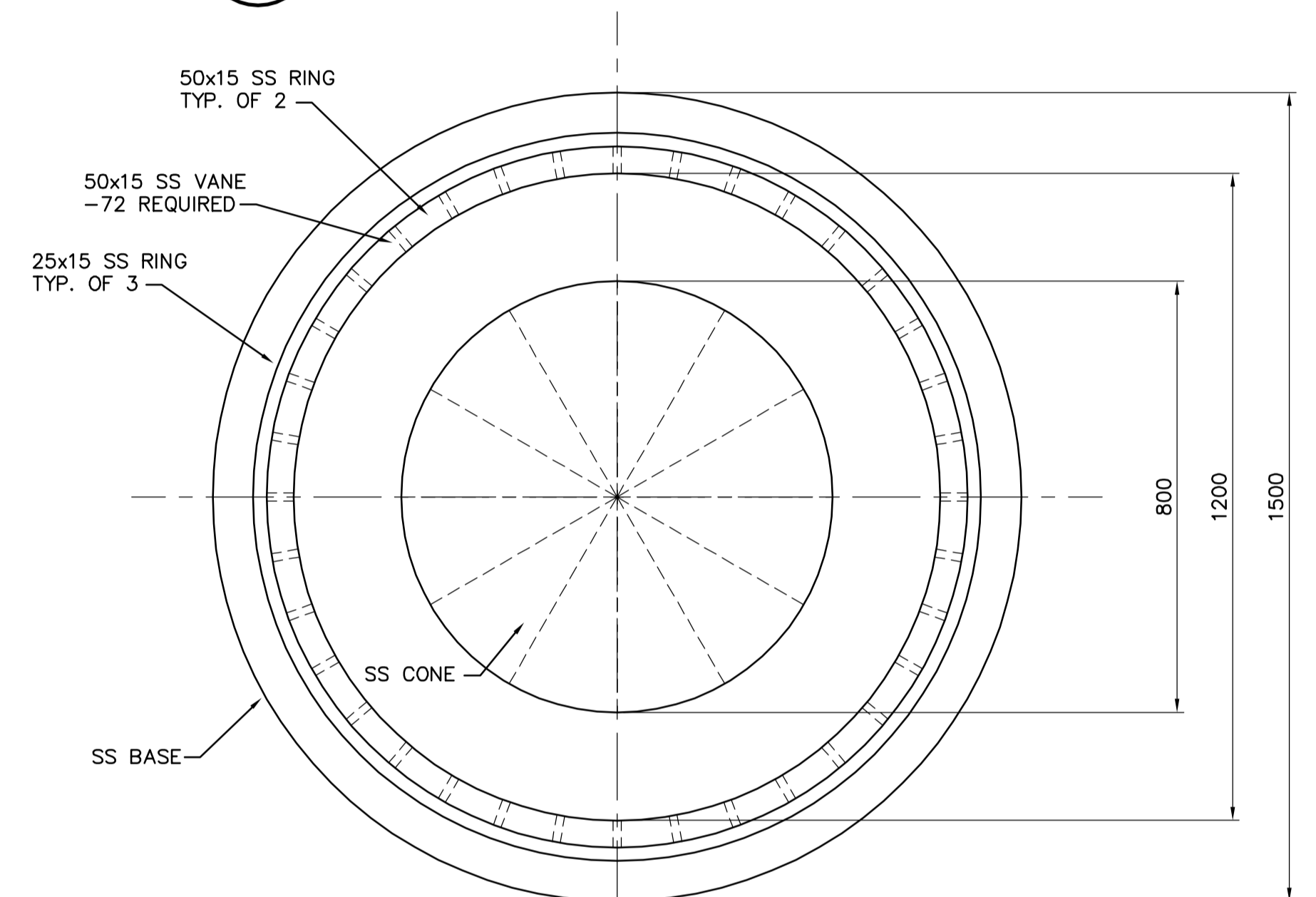
1 DETAIL
P1.02 SCALE 1:50



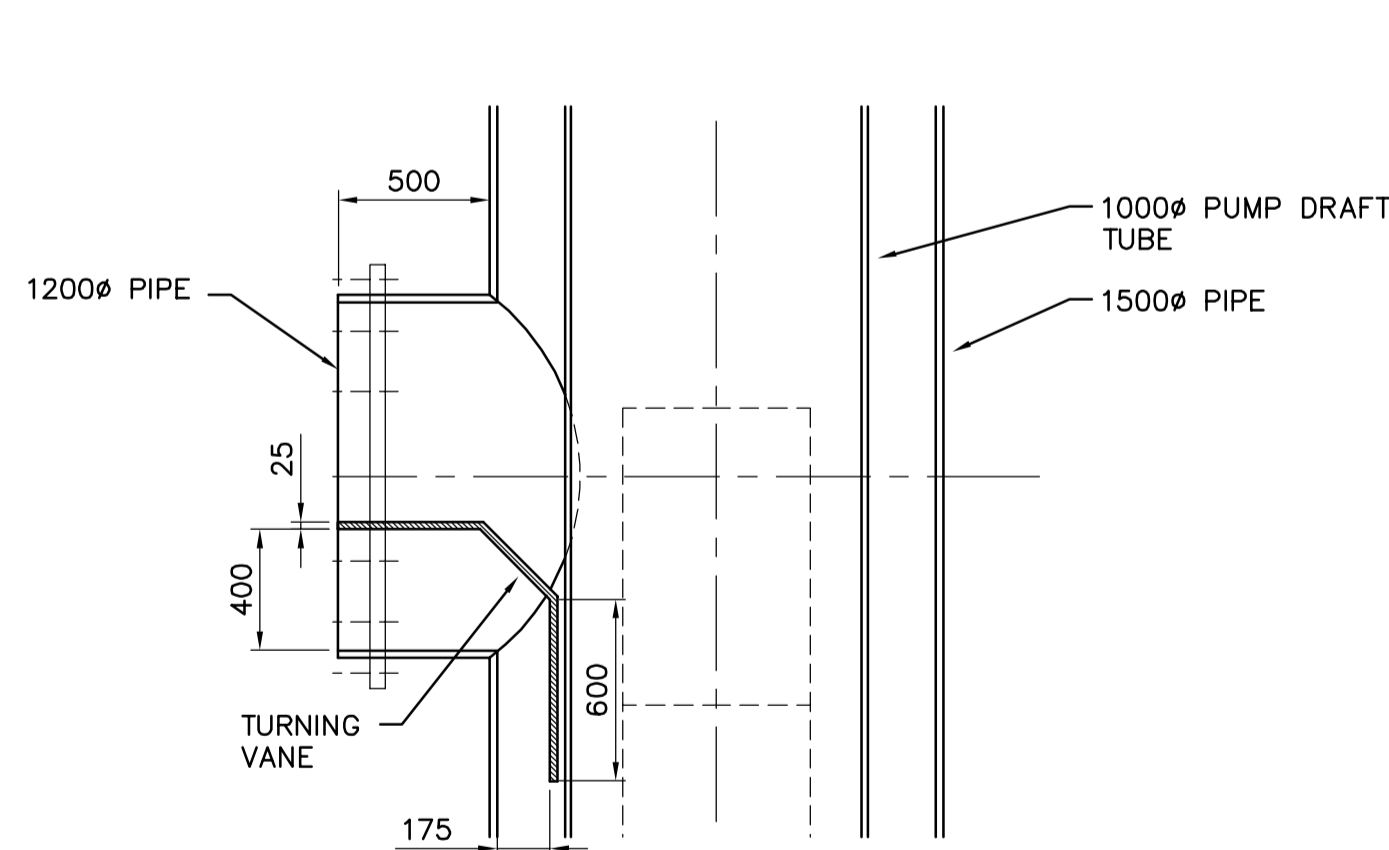
2 SECTION
P1.02 SCALE 1:50



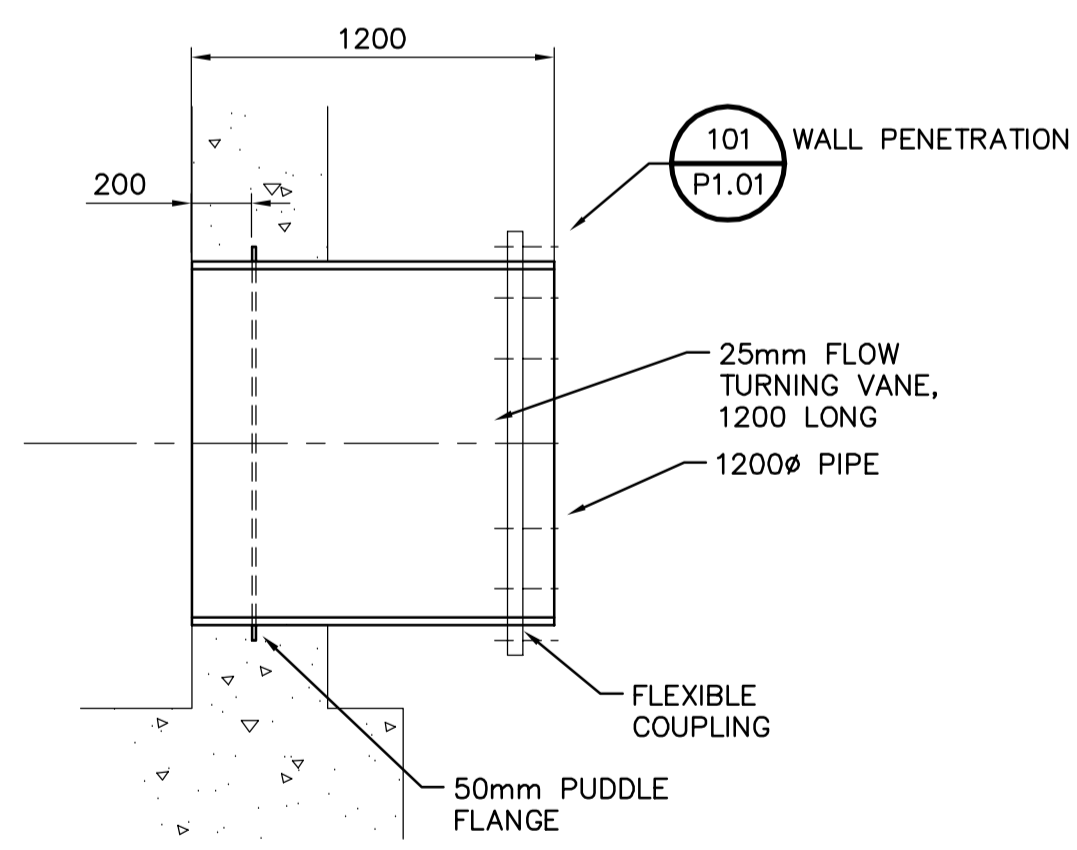
A FLOOR CONE/VANE RING DETAIL - SECTION
P1.02 SCALE 1:10



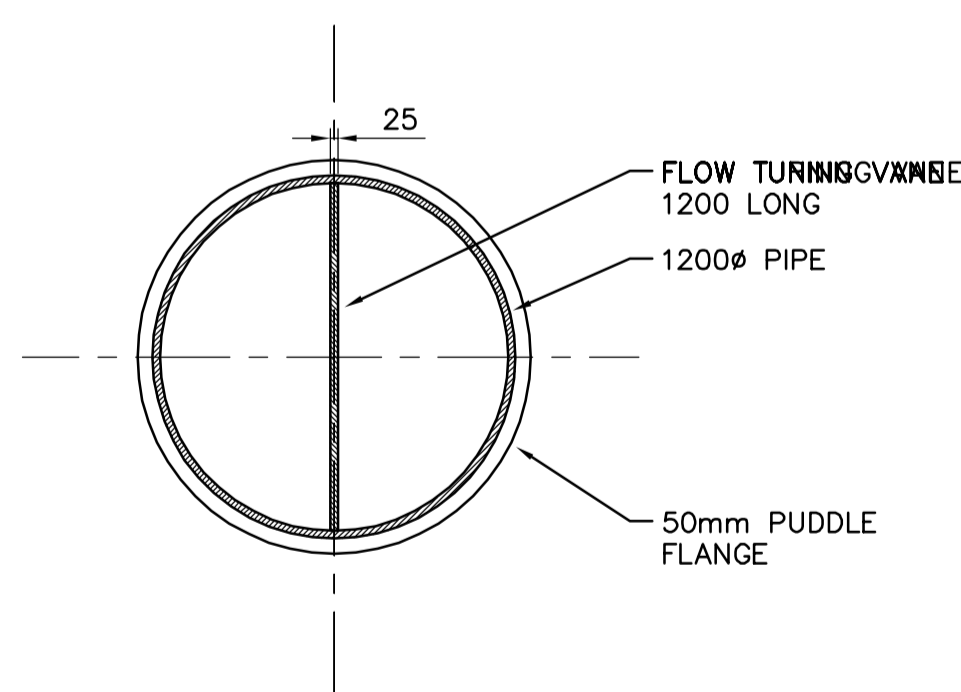
B FLOOR CONE/VANE RING DETAIL - PLAN
P1.02 SCALE 1:10



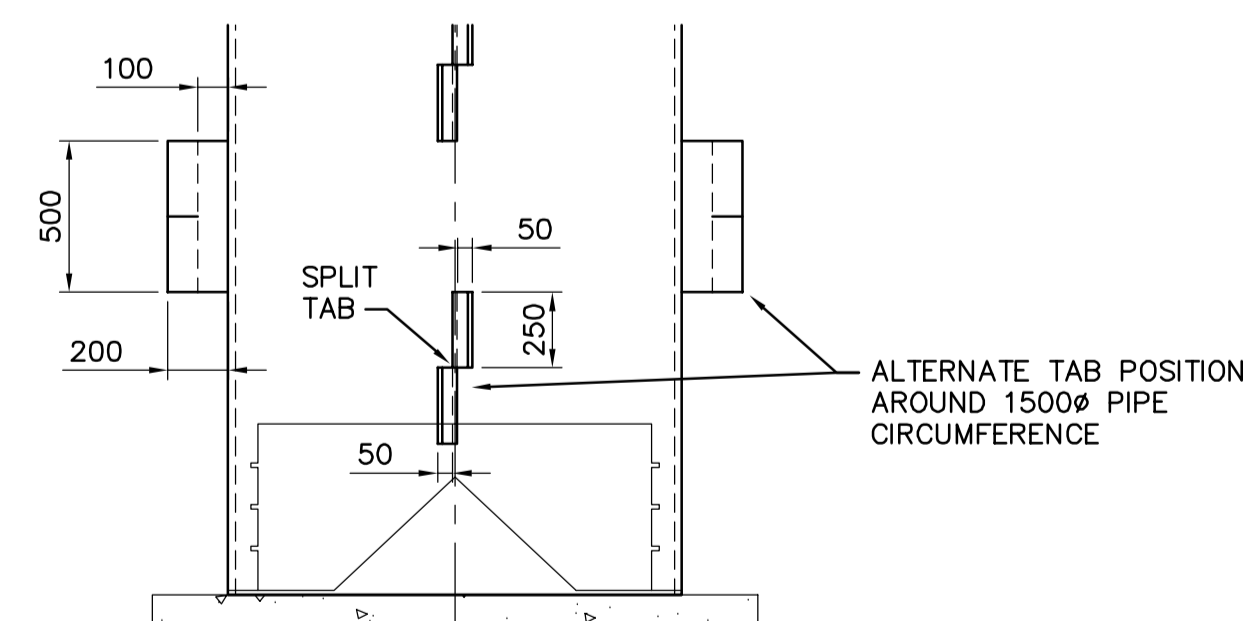
3 DETAIL
P1.02 SCALE 1:25



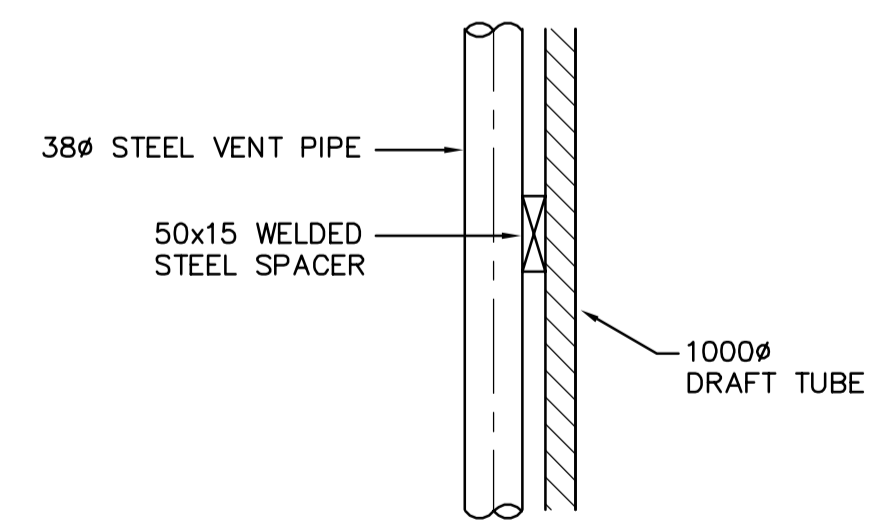
4 DETAIL
P1.02 SCALE 1:25



5 SECTION
P1.02 SCALE 1:25



C ANCHOR TAB DETAIL
P1.02 SCALE 1:50



D VENT PIPE ATTACHMENT
P1.02 SCALE 1:5

NOTES

1. MATERIALS: CARBON STEEL, GRADE TO BE DETERMINED BY PUMP MANUFACTURER
2. COATING AND FINISH AS PER NEWPCC UV SPECIFICATION SECTION 11901
3. DIMENSION SHOWN TO CONCRETE STRUCTURES ARE FIXED, PIPE THICKNESS TO BE DETERMINED BY PUMP MANUFACTURER.
4. PUMPS, DRAFT TUBES, INTERCONNECTING PIPES AND COUPLINGS PROVIDED BY PUMP MANUFACTURER, INSTALLED BY CONTRACTOR.



B.M. ELEV.	EARTH TECH		ENGINEER'S SEAL	THE CITY OF WINNIPEG	
	Earth Tech (Canada) Inc. Winnipeg, Manitoba 204.477.5381		ORIGINAL SIGNED BY	Winnipeg WATER AND WASTE DEPARTMENT	
	DESIGNED BY: HH	CHECKED BY: HH	D.J. TANIGUCHI	NEWPCC - SECONDARY EFFLUENT UV DISINFECTION FACILITY	
	DRAWN BY: KJW	APPROVED BY: DT	FEB. 18/05	CITY FILE NUMBER	
	HOR. SCALE: AS NOTED	RELEASED FOR CONSTRUCTION BY: T. KJARTANSON	CONSULTANT DRAWING NO. 66303D-CP1.05	SHEET # OF #S	
0	ISSUED FOR TENDER	05/02/18	JEH	CITY DRAWING NUMBER	
NO. REVISIONS	DATE	BY	DATE	PROCESS AXIAL FLOW PUMP OUTLINE GENERAL ARRANGEMENT AND DETAILS	
			2004/11/03		
			2005-02-18		