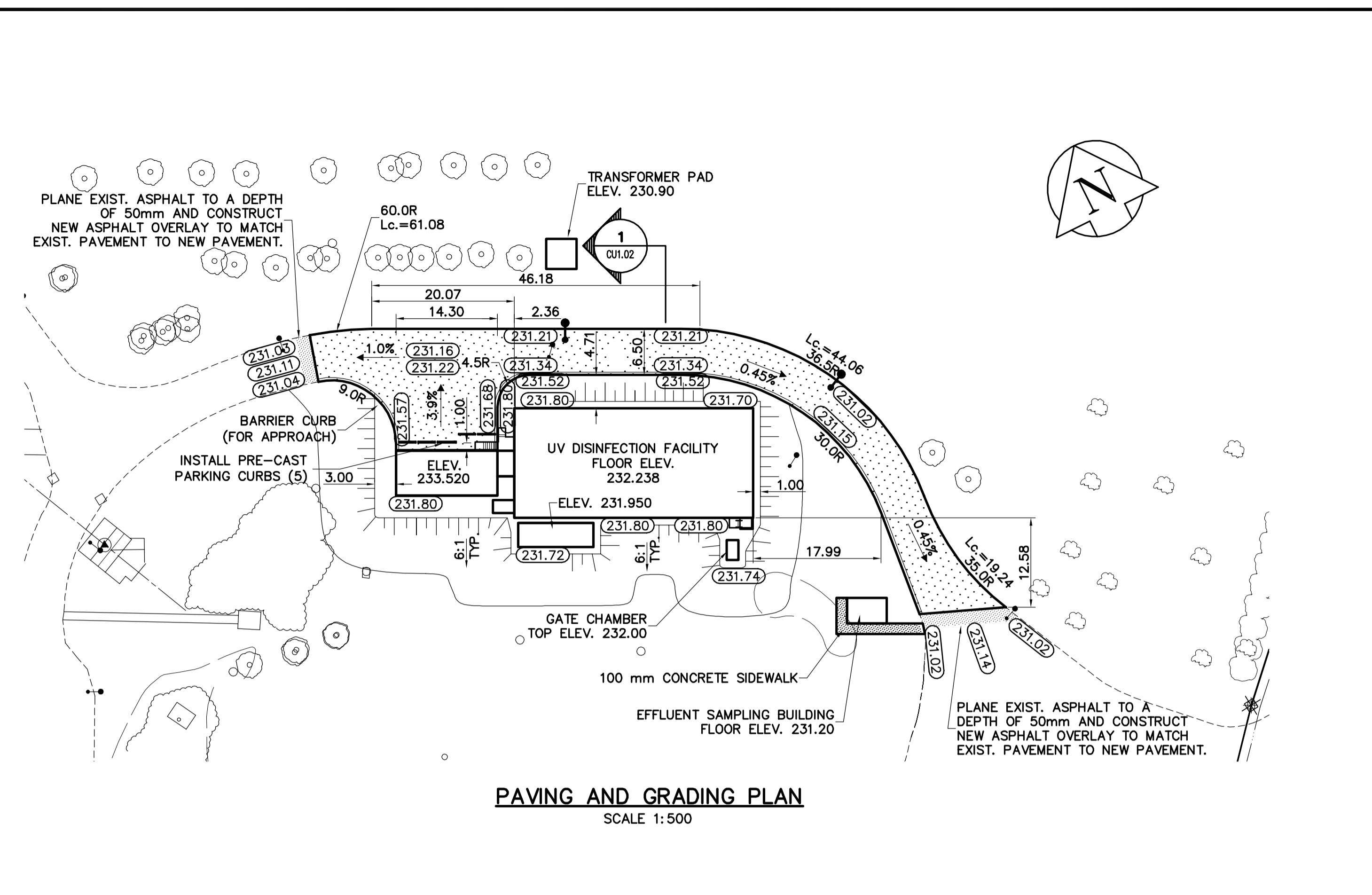
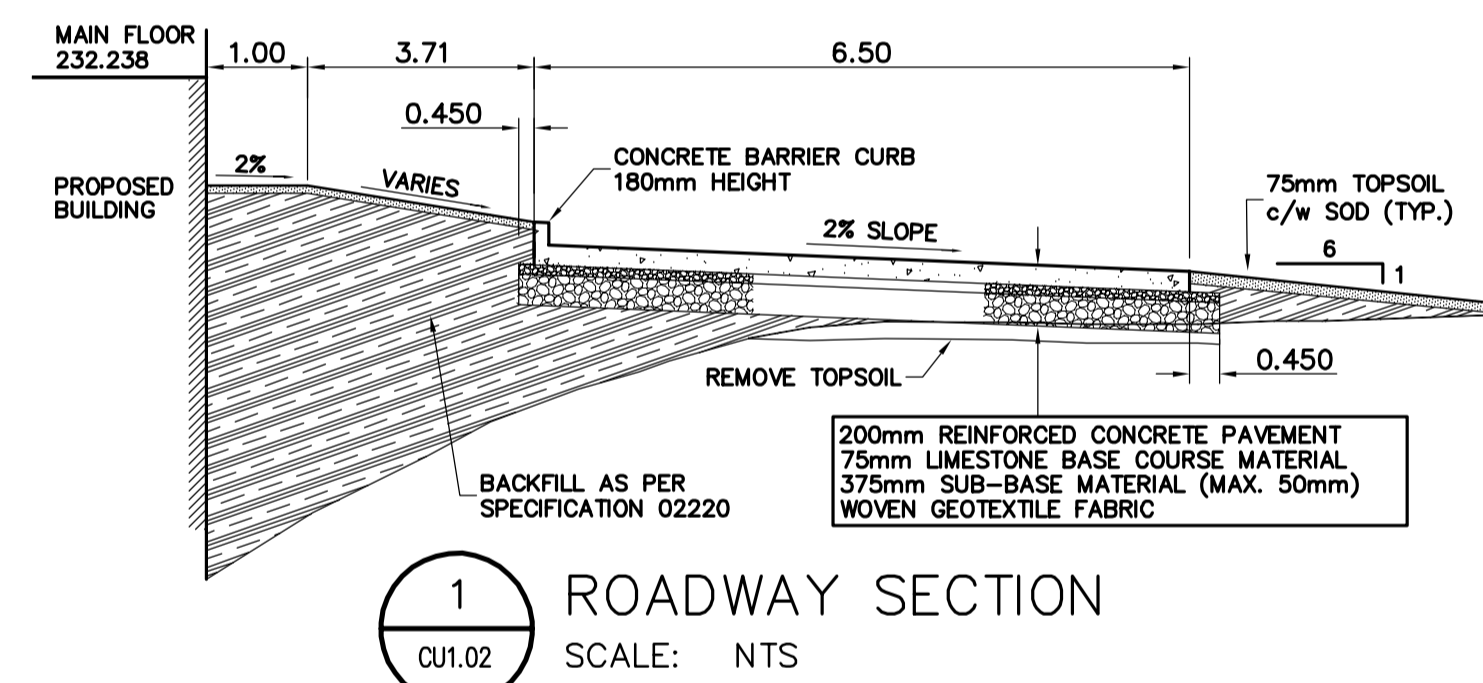


SEWER AND WATER SERVICING PLAN
SCALE 1:500

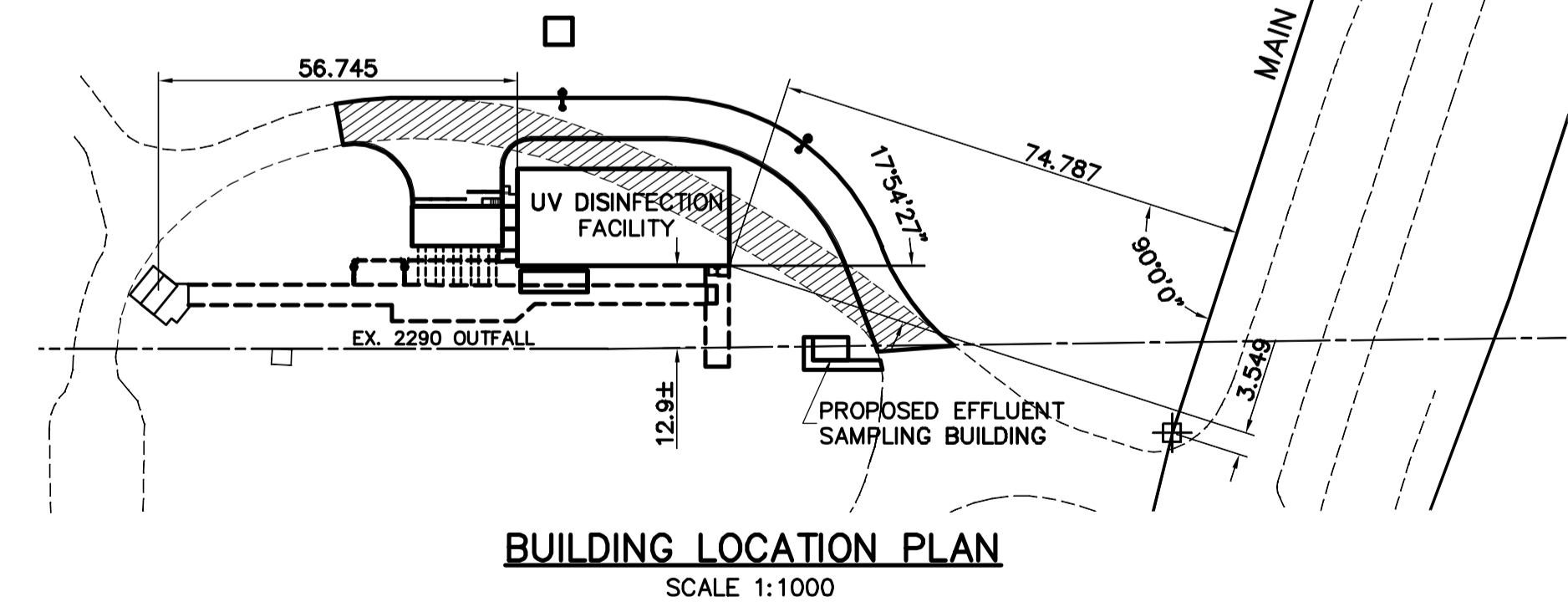


PAVING AND GRADING PLAN
SCALE 1:500



1 ROADWAY SECTION
SCALE: NTS

- NOTES:
1. ALL WORK AND MATERIALS SHALL CONFORM TO THE CITY OF WINNIPEG STANDARD CONSTRUCTION SPECIFICATIONS.
 2. MINIMUM COVER ON PROPOSED WATERMAIN 2.5m EXCEPT WHERE NOTED.
 3. INSTALL HYDRANT WITH FLANGE ELEVATION 50mm - 150mm ABOVE FINISHED GRADE.
 4. LOCATION OF UTILITIES SHOWN ON DRAWINGS ARE APPROXIMATE. THE CONTRACTOR SHALL FIELD LOCATE ALL UTILITIES PRIOR TO CONSTRUCTION.
 5. ALL VALVES SHALL BE BLACK TOP (CLOCKWISE TO CLOSE).
 6. RESTORE SURFACES TO A CONDITION BETTER THAN OR EQUAL TO ORIGINAL CONDITION. ALL BOULEVARD AREAS TO BE RESTORED WITH TOPSOIL AND SOD.
 7. LOCATE EXISTING OUTFALL AT ALL CONNECTION AND CROSSING POINTS PRIOR TO ANY CONSTRUCTION.



BUILDING LOCATION PLAN
SCALE 1:1000

APEGM
Certificate of Authorization
Earth Tech Canada Inc.
No. 730 Expiry: April 30, 2005

| 150 mm W.M. | WATERMAIN | 150 mm W.M. | HYDRO | 150 mm W.M. | WATERMAIN |
|-------------|---------------------|-------------|-------------------|-------------|---------------------|
| ⊕ | HYDRANT | ⊕ | M.T.S. | ⊕ | HYDRANT |
| ⊙ | VALVE | ⊙ | CONCRETE | ⊕ | VALVE |
| ⊖ | LAND DRAINAGE SEWER | ⊖ | ASPHALT | ⊕ | LAND DRAINAGE SEWER |
| ⊗ | WASTEWATER SEWER | ⊗ | PROPERTY LINE | ⊕ | WASTEWATER SEWER |
| ○ | MANHOLE | ○ | SURVEY BAR | ⊕ | ⊕ PROFILE |
| □ | CATCH BASIN | □ | ELEVATION | ⊕ | LAMP STANDARD |
| ▽ | CURB INLET | ▽ | TREE | ⊕ | |
| ⊕ | JUNCTIONS | ⊕ | SPRINKLER LINE | ⊕ | |
| ⊕ | CULVERT | ⊕ | CONCRETE SIDEWALK | ⊕ | |
| ⊕ | GAS | ⊕ | FENCE | ⊕ | |
| --- | EXISTING | --- | EXISTING | --- | EXISTING |
| --- | LEGEND - PLAN | --- | LEGEND - PLAN | --- | LEGEND - PROFILE |
| --- | PROPOSED | --- | PROPOSED | --- | PROPOSED |

LOCATION APPROVED UNDERGROUND STRUCTURES

DATE: _____

NOTE:
LOCATION OF UNDERGROUND STRUCTURES AS SHOWN ARE BASED ON THE BEST INFORMATION AVAILABLE. BUT NO GUARANTEE IS GIVEN THAT ALL EXISTING UTILITIES ARE SHOWN OR THAT THE GIVEN LOCATIONS ARE EXACT. CONFIRMATION OF EXISTENCE AND EXACT LOCATION OF ALL SERVICES MUST BE OBTAINED FROM THE INDIVIDUAL UTILITIES BEFORE PROCEEDING WITH CONSTRUCTION.

| EARTH TECH | |
|-----------------------------|--|
| DESIGNED BY: GSK | CHECKED BY: JEH |
| DRAWN BY: GDL | APPROVED BY: DT |
| HOR. SCALE: AS NOTED | RELEASED FOR CONSTRUCTION BY: T. KUJARTANSON |
| VERTICAL SCALE: | |
| ISSUED FOR TENDER: 05/02/18 | DATE: 2004/11/04 |
| NO. REVISIONS: | DATE: 2005-02-18 |

ENGINEER'S SEAL

ORIGINAL SIGNED BY: D.J. TANIGUCHI

DATE: FEB. 18/05

CONSULTANT DRAWING NO. 66303D-CU1.02

THE CITY OF WINNIPEG
Winnipeg WATER AND WASTE DEPARTMENT

NEWPCC - SECONDARY EFFLUENT UV DISINFECTION FACILITY

SITE WORKS
SEWER AND WATER SERVICING,
PAVING AND GRADING

CITY FILE NUMBER

SHEET # OF #S

CITY DRAWING NUMBER