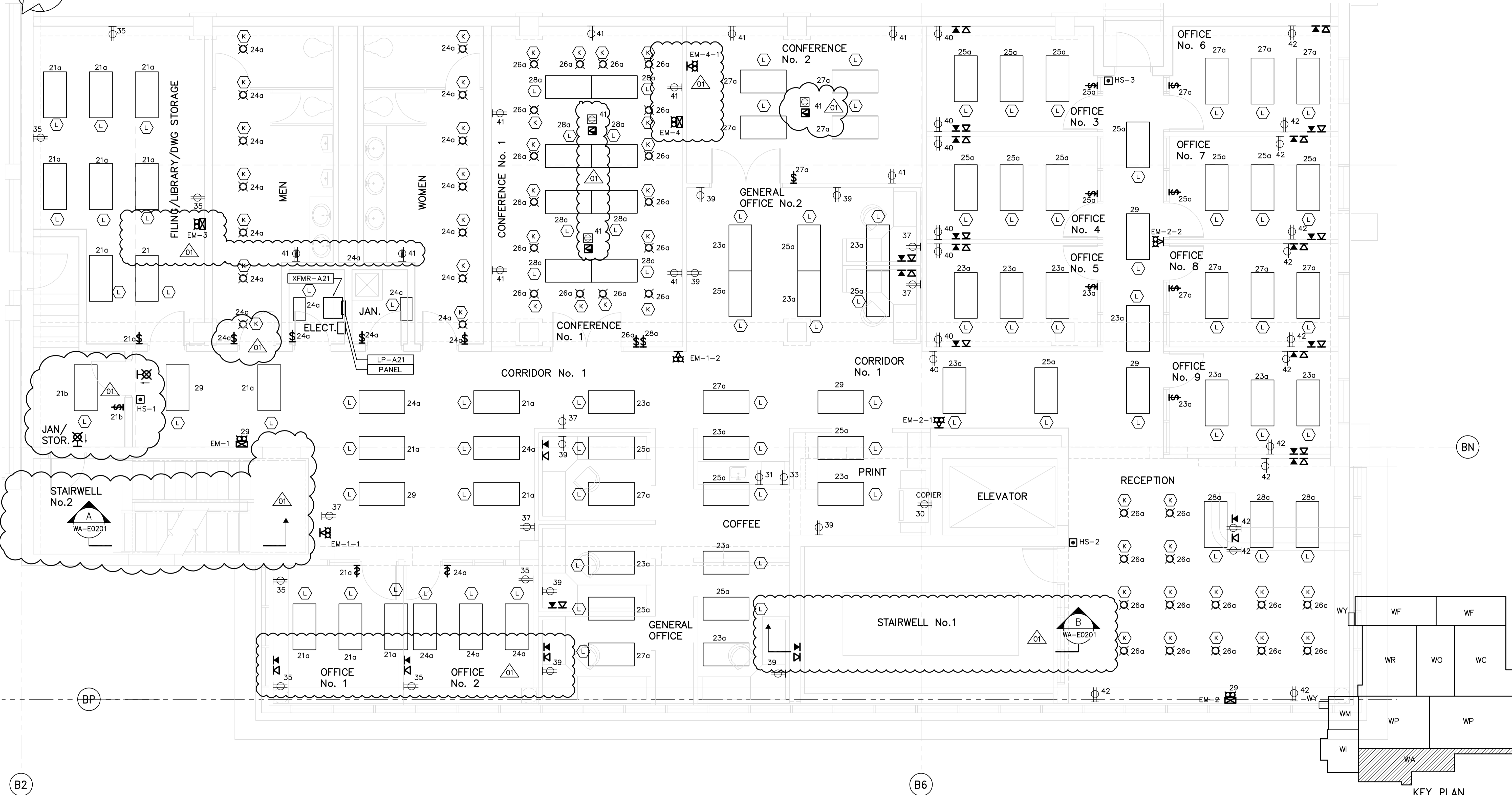
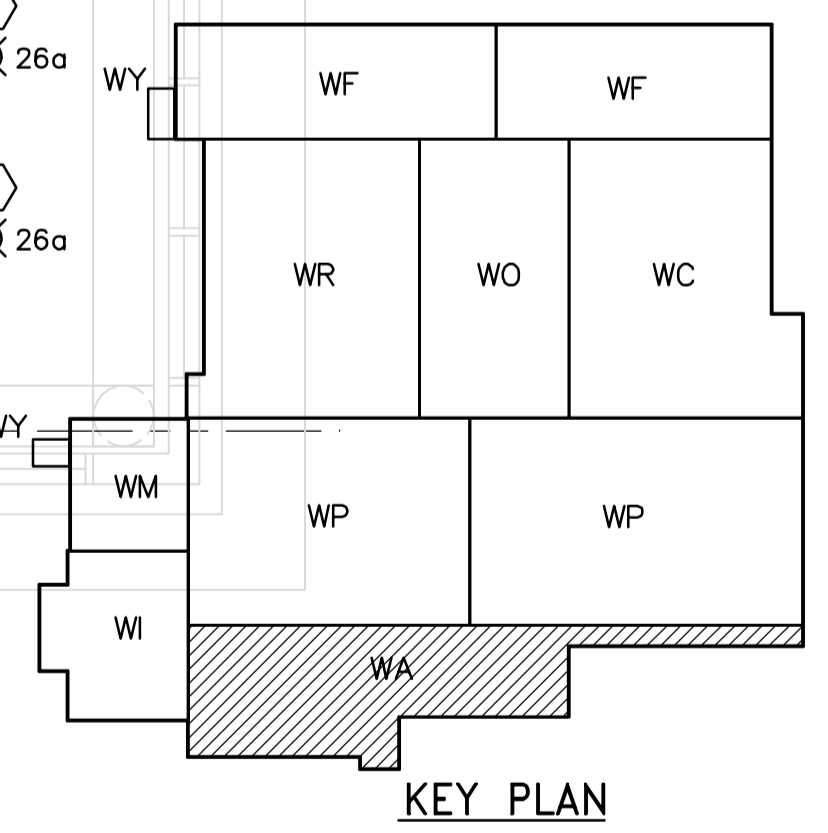
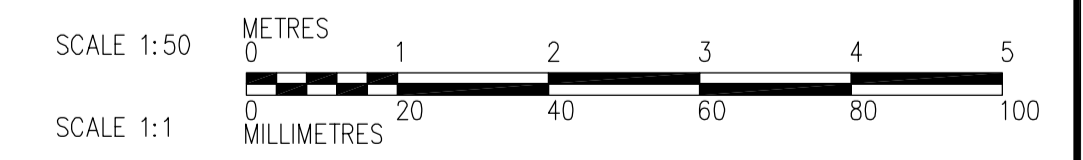


NOTES  
1. ALL 120V AND 208V LOADS ARE FED FROM LP-A21

ADMINISTRATION AREA



1 SECOND FLOOR POWER AND LIGHTING PLAN  
WA-E0113 1:50



**APECA**  
Certificate of Authorization  
CH2M HILL Canada Ltd.  
No. 1441 Expiry: April 30, 2007

B.M. ELEV.			
DESIGNED BY	PF	CHECKED BY	ND
DRAWN BY	TL	APPROVED BY	AHL
SCALE:	1:50	RELEASED FOR CONSTRUCTION BY:	R. SOROKOWSKI
NO. REVISIONS	DATE	DATE	DATE
01	742-2005 ADDENDUM 3	06/05/05	LL
00	ISSUED FOR TENDER	06/03/29	LL
		2006/02/07	
		2006/03/29	



DESIGNED BY	PF	CHECKED BY	ND
DRAWN BY	TL	APPROVED BY	AHL
SCALE:	1:50	RELEASED FOR CONSTRUCTION BY:	R. SOROKOWSKI
DATE	2006/02/07	DATE	2006/03/29

ENGINEER'S SEAL  
ORIGINAL SIGNED BY  
L.D. LLEWELLYN  
2006/03/29  
CONSULTANT DRAWING NO.  
WA-E0401

**THE CITY OF WINNIPEG**  
WATER AND WASTE DEPARTMENT  
ENGINEERING DIVISION

WATER TREATMENT PLANT  
ADMINISTRATION AREA  
MECHANICAL AND ELECTRICAL

ELECTRICAL  
ADMINISTRATION AREA  
SECOND FLOOR POWER AND LIGHTING PLAN

CITY FILE NUMBER  
SHEET OF  
CITY DRAWING NUMBER  
1-0601A-A-E0401-001-01D