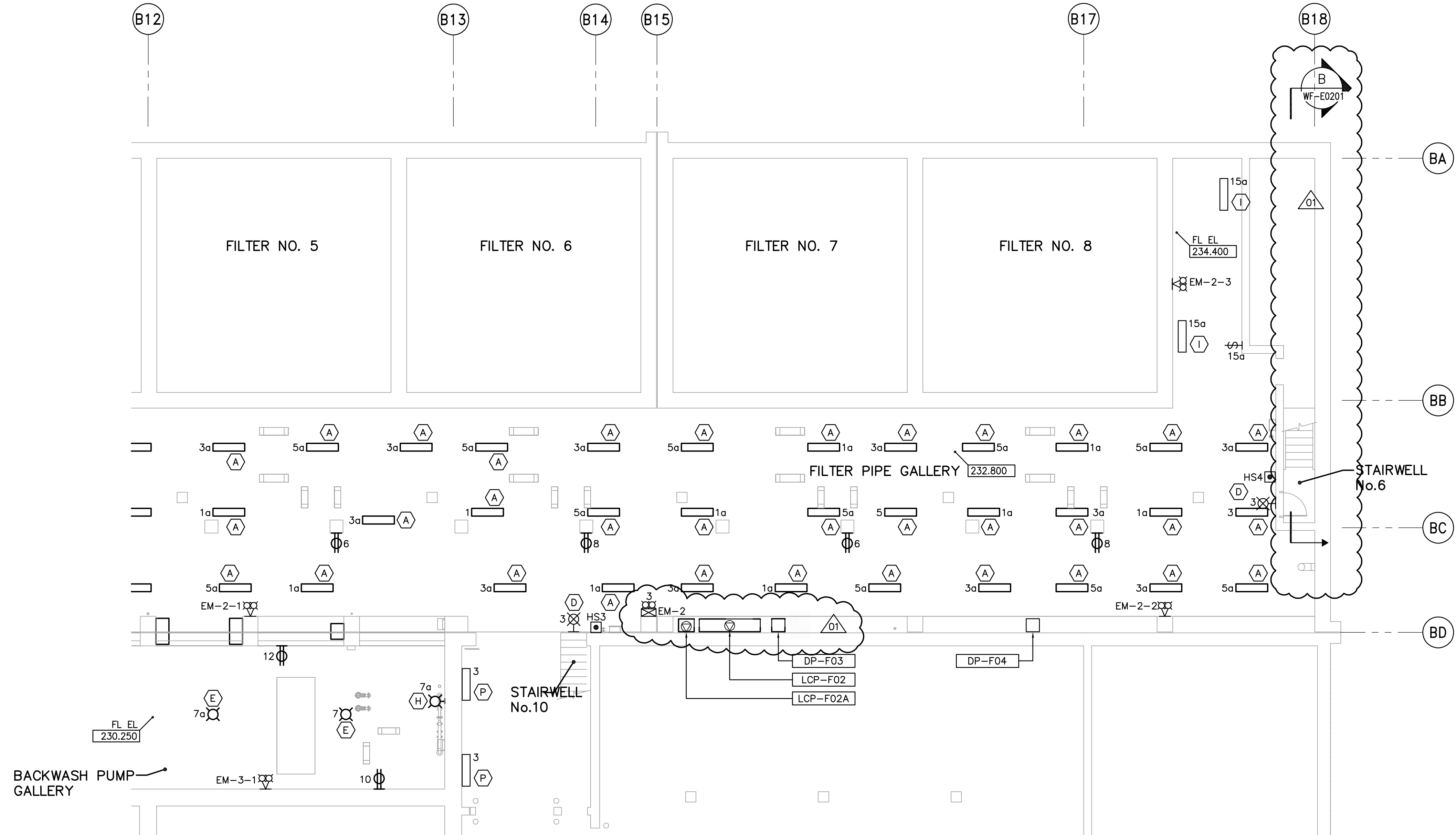
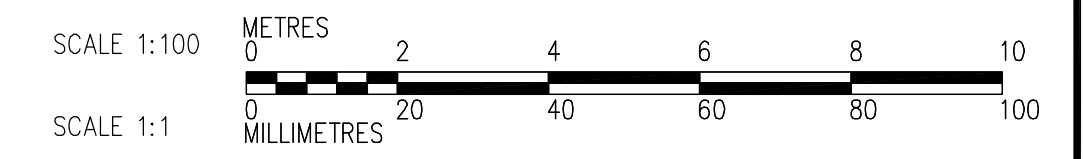
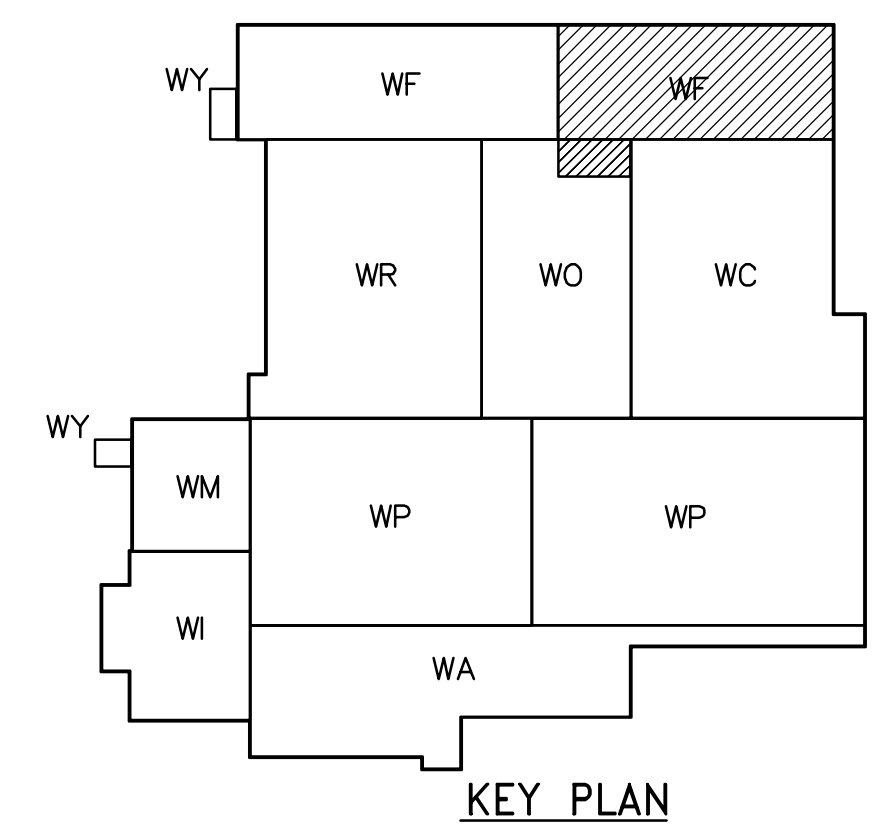


- NOTES:**
1. ALL 120V AND 208V LOADS ARE FED FROM LP-F01.
  2. EMERGENCY LIGHTING EM-X-1, -2 ETC ARE FED FROM BATTERY PACK EM-X.
  3. MOUNT TYPE A LUMINAIRE AT 3.2m ABOVE FINISHED FLOOR.



**LOWER LEVEL POWER AND LIGHTING PLAN (AREA 2)**  
1:100



 <b>APEGN</b> Certificate of Authorization CH2M HILL Canada Ltd. No. 1441 Expiry: April 30, 2007	 Frederickson Cooper ARCHITECTS	 A 100 International Ltd. Company	ENGINEER'S SEAL	 <b>THE CITY OF WINNIPEG</b> WATER AND WASTE DEPARTMENT ENGINEERING DIVISION		
			DESIGNED BY JT		CHECKED BY ND	ORIGINAL SIGNED BY L.D. LLEWELLYN
			DRAWN BY KJ		APPROVED BY AHL	2006/03/29
			SCALE: 1:100		RELEASED FOR CONSTRUCTION BY: R. SOROKOWSKI	CONSULTANT DRAWING NO. WF-E0106
B.M. ELEV. NO. REVISIONS DATE BY	01 742-2005 ADDENDUM 3 06/05/05 LL 00 ISSUED FOR TENDER 06/03/29 LL	DATE 2005/07/13 DATE 2006/03/29	WATER TREATMENT PLANT FILTRATION MECHANICAL AND ELECTRICAL	CITY FILE NUMBER SHEET OF CITY DRAWING NUMBER 1-0601F-A-E0106-001-01D		