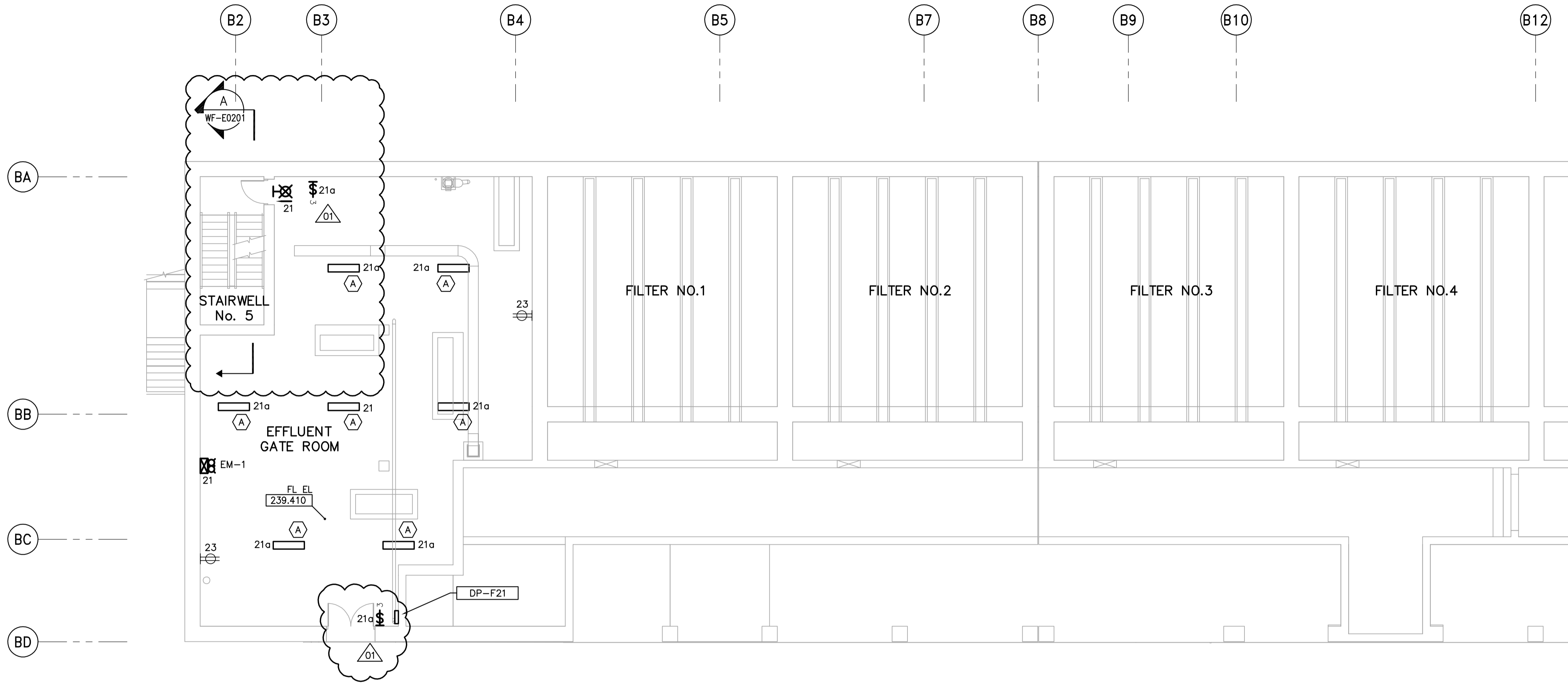
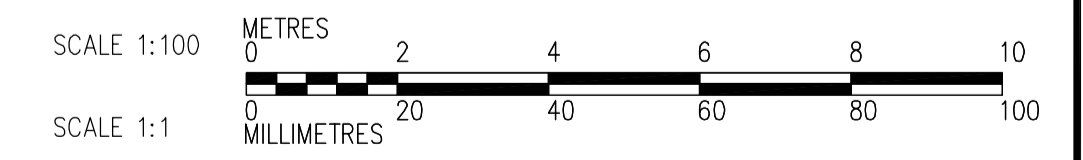
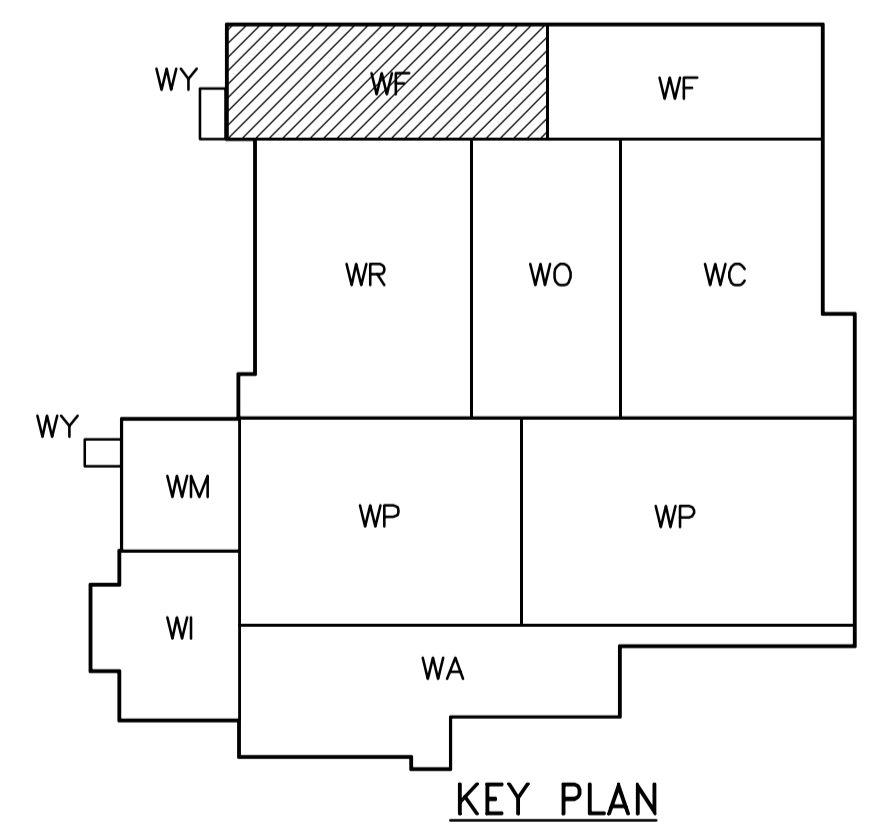


- NOTES:
1. ALL 120V AND 208V LOADS ARE FED FROM LP-R21.
 2. MOUNT TYPE A LUMINAIRE AT 3.0m ABOVE THE FLOOR.



SECOND FLOOR POWER AND LIGHTING PLAN (AREA 1)
1:100



 Certificate of Authorization CH2M HILL Canada Ltd. No. 1441 Expiry: April 30, 2007	B.M. ELEV. <table border="1"> <tr><td> </td><td> </td><td> </td></tr> <tr><td> </td><td> </td><td> </td></tr> <tr><td> </td><td> </td><td> </td></tr> <tr><td> </td><td> </td><td> </td></tr> </table>													 Frederickson Cooper ARCHITECTS	 A Terra International Ltd. Company	ENGINEER'S SEAL	 THE CITY OF WINNIPEG WATER AND WASTE DEPARTMENT ENGINEERING DIVISION
DESIGNED BY: LL DRAWN BY: PS SCALE: 1:100	CHECKED BY: ND APPROVED BY: AHL RELEASED FOR CONSTRUCTION BY: R. SOROKOWSKI	ORIGINAL SIGNED BY: L.D. LLEWELLYN 2006/03/29 CONSULTANT DRAWING NO. WF-E0125	WATER TREATMENT PLANT FILTRATION MECHANICAL AND ELECTRICAL ELECTRICAL FILTRATION AREA 1 SECOND FLOOR POWER AND LIGHTING PLAN	CITY FILE NUMBER SHEET OF CITY DRAWING NUMBER 1-0601F-A-E0125-001-01D													
NO. REVISIONS DATE BY		DATE: 2005/07/08	DATE: 2006/03/29	Last Save: 2006-05-03 6:49 PM													