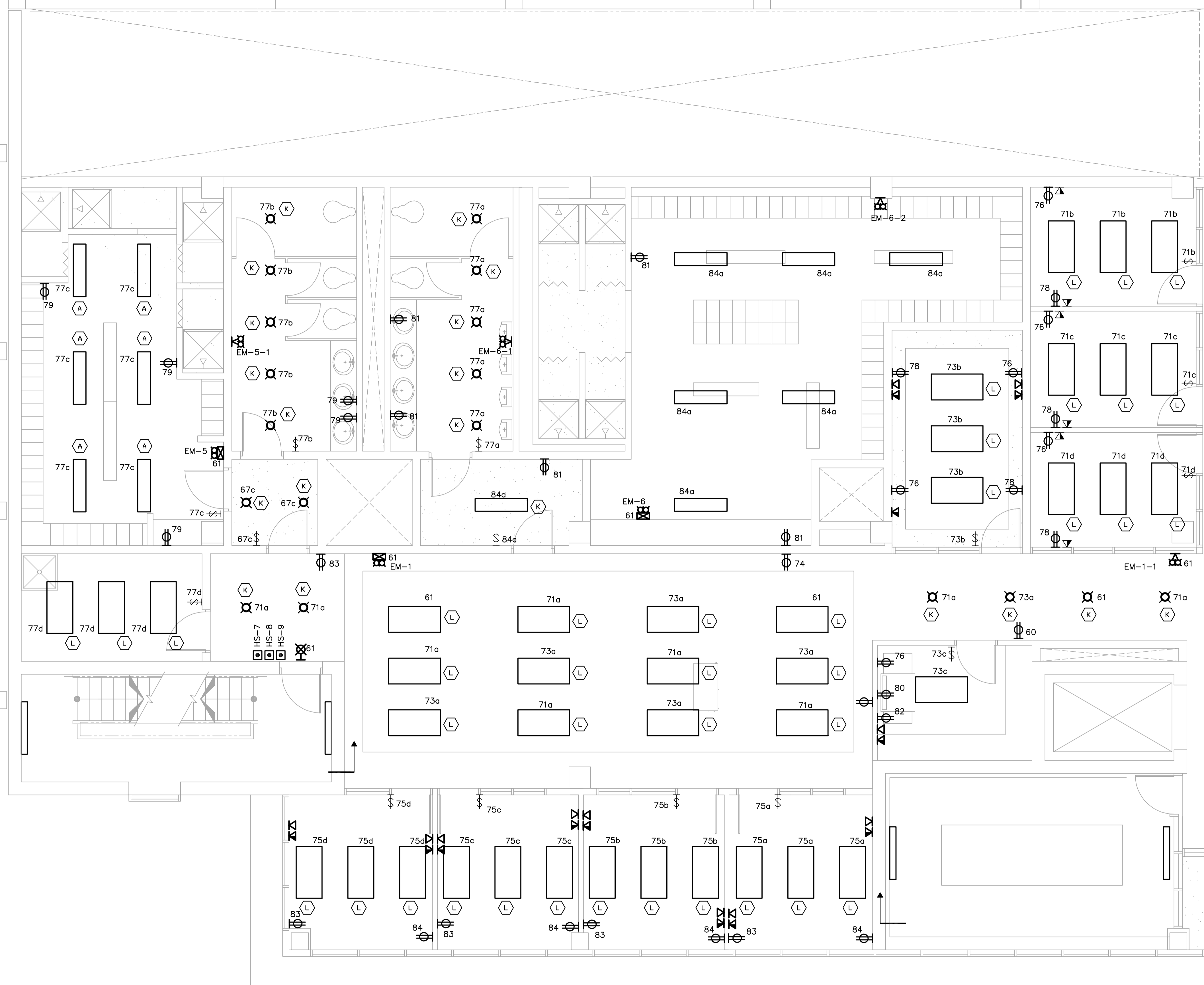


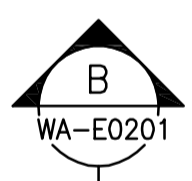
B2

B6

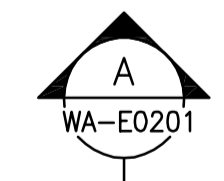
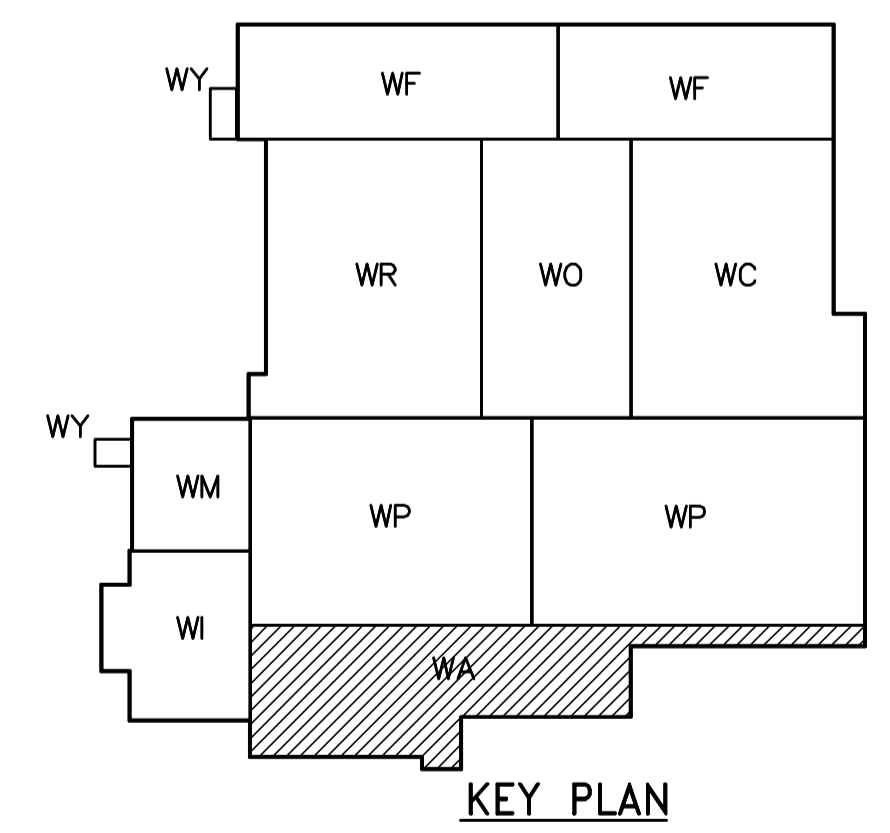


**NOTES:**  
 1. ALL 120V AND 208V LOADS ARE FED FROM LP-A31.  
 2. EMERGENCY LIGHTING EM-X-1 ARE FED FROM BATTERY PACK EM-X.

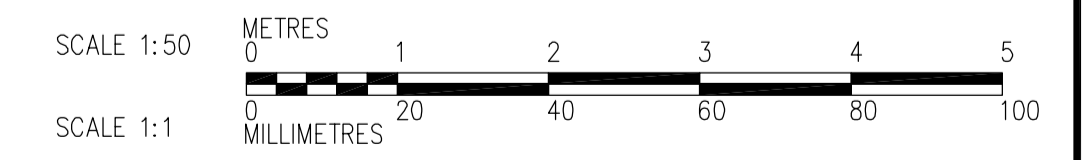
BN



BP



**1** THIRD FLOOR POWER AND LIGHTING PLAN  
 WA-E0133 N.T.S.



**APECA**  
 Certificate of Authorization  
 CH2M HILL Canada Ltd.  
 No. 1441 Expiry: April 30, 2006

B.M. ELEV.			
DESIGNED BY	LL	CHECKED BY	ND
DRAWN BY	TL	APPROVED BY	AHL
SCALE:	1:50	RELEASED FOR CONSTRUCTION BY:	R. SOROKOWSKI
00 ISSUED FOR TENDER	06/03/29	DATE	2006/03/10
NO. REVISIONS		DATE	2006/03/29

**CH2MHILL**  
 Frederickson Cooper ARCHITECTS

**EarthTech**  
 A Yoo International Ltd. Company

DESIGNED BY: LL  
 CHECKED BY: ND  
 DRAWN BY: TL  
 APPROVED BY: AHL  
 SCALE: 1:50  
 RELEASED FOR CONSTRUCTION BY: R. SOROKOWSKI  
 DATE: 2006/03/29

ENGINEER'S SEAL  
 ORIGINAL SIGNED BY  
 L.D. LLEWELLYN  
 2006/03/29  
 CONSULTANT DRAWING NO.  
 WA-E0402

**THE CITY OF WINNIPEG**  
 WATER AND WASTE DEPARTMENT  
 ENGINEERING DIVISION

WATER TREATMENT PLANT  
 ADMINISTRATION AREA  
 MECHANICAL AND ELECTRICAL

ELECTRICAL  
 ADMINISTRATION AREA  
 THIRD FLOOR POWER AND LIGHTING PLAN

CITY FILE NUMBER  
 SHEET OF  
 CITY DRAWING NUMBER  
 1-0601A-A-E0402-001-000