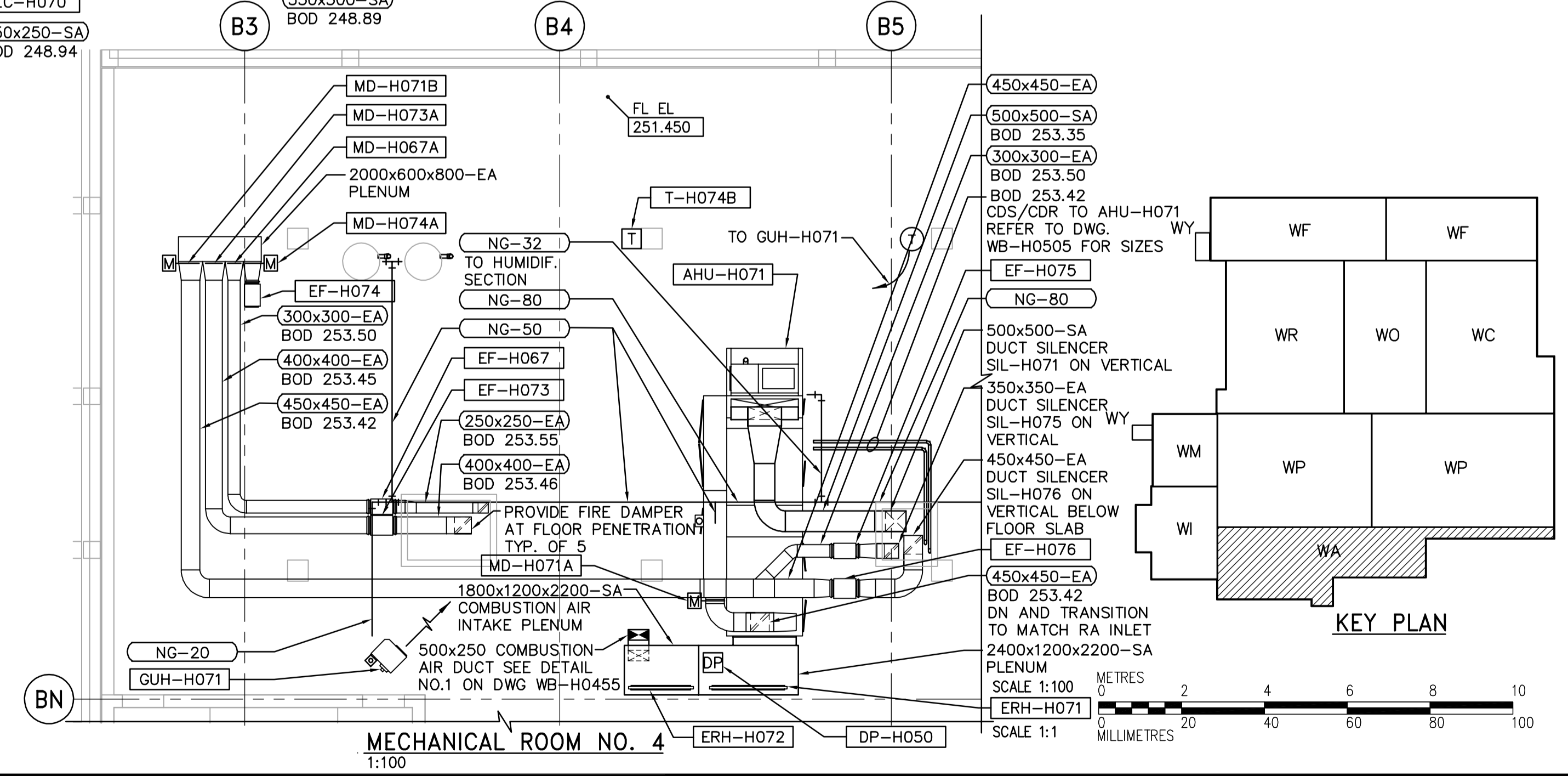


THIRD FLOOR PLAN  
1:100

Heat Pump Ventilation Airflow Rates	
Heat Pump System	Airflow [L/s]
HP-H077	74
HP-H087	192
HP-H081	24
HP-H080	60
HP-H082	332
HP-H088	63
HP-H085	47
HP-H083	34
HP-H084	24
HP-H078	50
HP-H079	83
HP-H086	32
HP-H070	18

- NOTES:
- REFER TO ARCHITECTURAL REFLECTED CEILING PLAN FOR EXACT LOCATION OF CEILING DIFFUSERS AND GRILLES. REFLECTED CEILING PLAN TO BE PROVIDED LATER BY CONTRACT ADMINISTRATOR.
  - PROVIDE A BALANCING DAMPER AT EACH OUTSIDE AIR DUCT TO HEAT PUMP UNIT.
  - ROUTE ALL CONDENSATE DRAIN PIPES WITHIN CEILING SPACE AND TERMINATE AT CLOSEST FUNNEL FLOOR DRAINS OR INDIRECT DRAIN PIPE PROVIDED. REFER TO PLUMBING AND DRAINAGE DRAWINGS FOR LOCATION OF FUNNEL FLOOR DRAINS AND INDIRECT DRAIN PIPE.
  - PROVIDE FIRE DAMPER AT EACH DUCT PENETRATION THRU FLOOR IN MECHANICAL ROOM No. 4
  - PROVIDE SEPARATE GAS EXHAUST VENT THRU ROOF FOR AHU-H071 AND ITS HUMIDIFIER. SEE DETAIL 2 ON DWG WB-H0455



MECHANICAL ROOM NO. 4  
1:100



SCALE 1:100 METRES 0 2 4 6 8 10  
SCALE 1:1 MILLIMETRES 0 20 40 60 80 100

<p>Certificate of Authorization CH2M HILL Canada Ltd. No. 1441 Expiry: April 30, 2006</p>	<p>B.M. ELEV.</p>	<p>Frederickson Cooper ARCHITECTS</p>	<p>A 100 International Ltd. Company</p>	<p>ENGINEER'S SEAL</p> <p>ORIGINAL SIGNED BY D.K. CUDDINGTON</p> <p>2006/03/29</p>	<p>THE CITY OF WINNIPEG WATER AND WASTE DEPARTMENT ENGINEERING DIVISION</p> <p>WATER TREATMENT PLANT ADMINISTRATION MECHANICAL AND ELECTRICAL</p> <p>HVAC ADMINISTRATION AREA AND MECHANICAL ROOM NO.4 THIRD FLOOR PLAN</p>
	<p>DESIGNED BY TT</p> <p>DRAWN BY AM</p> <p>SCALE: 1:100</p> <p>00 ISSUED FOR TENDER 06/03/29 TT</p> <p>NO. REVISIONS DATE BY DATE</p>	<p>CHECKED BY DL</p> <p>APPROVED BY AHL</p> <p>RELEASED FOR CONSTRUCTION BY: R. SOROKOWSKI</p> <p>2005/07/04</p>	<p>CONSULTANT DRAWING NO. WA-H0131</p>	<p>CITY FILE NUMBER</p> <p>SHEET OF</p> <p>CITY DRAWING NUMBER 1-0601A-A-H0131-001-000</p>	