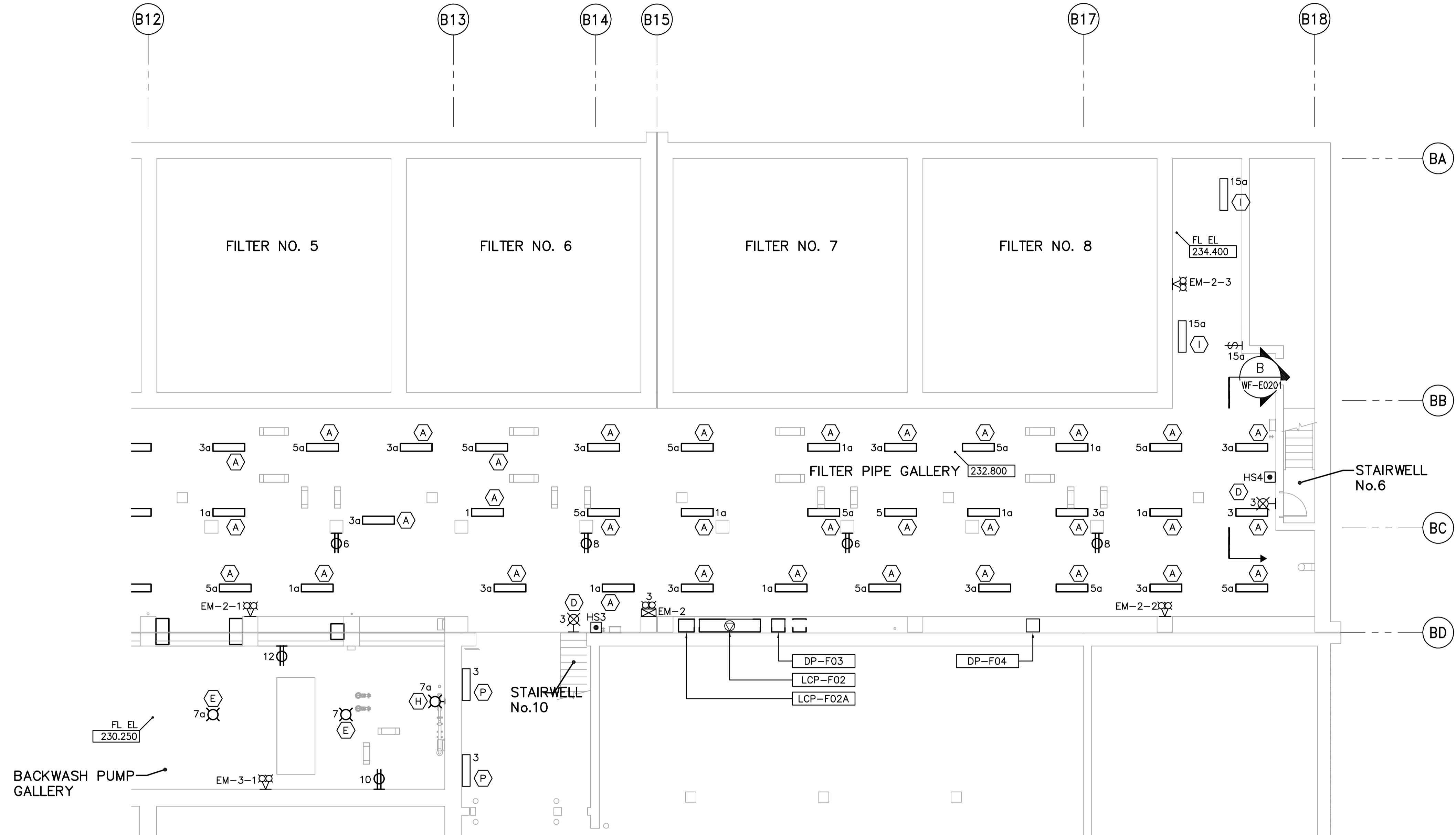
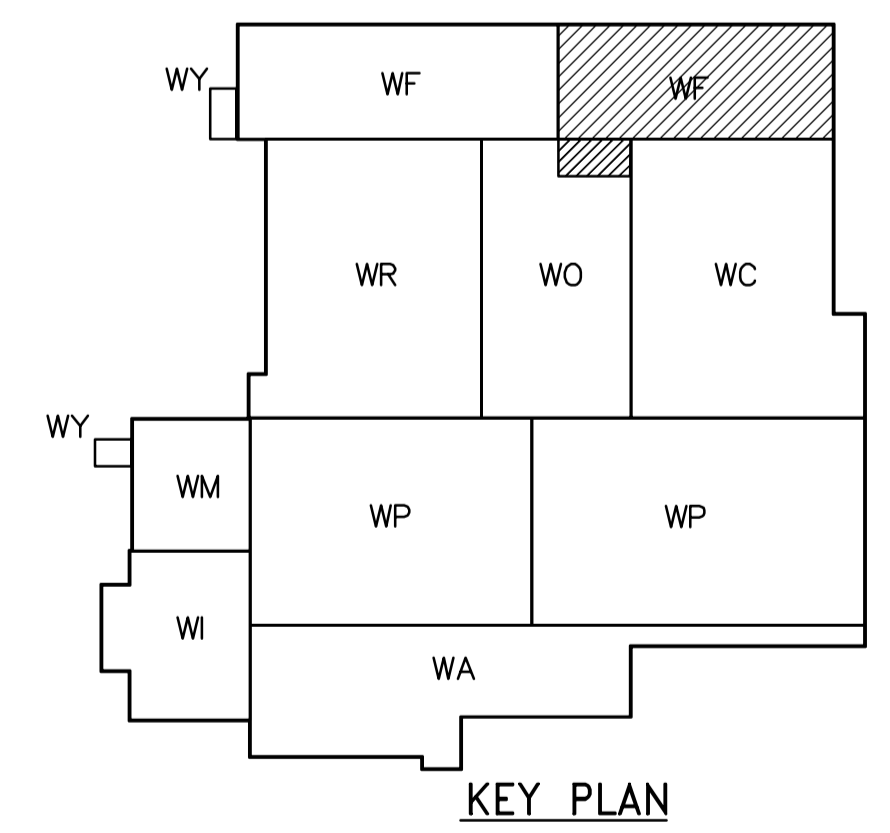


- NOTES:**
1. ALL 120V AND 208V LOADS ARE FED FROM LP-F01.
 2. EMERGENCY LIGHTING EM-X-1, -2 ETC ARE FED FROM BATTERY PACK EM-X.
 3. MOUNT TYPE A LUMINAIRE AT 3.2m ABOVE FINISHED FLOOR.



LOWER LEVEL POWER AND LIGHTING PLAN (AREA 2)
1:100



<p>Certificate of Authorization CH2M HILL Canada Ltd. No. 1441 Expiry: April 30, 2006</p>	<p>Frederickson Cooper ARCHITECTS</p>	<p>A 100 International Ltd. Company</p>	ENGINEER'S SEAL	<p>THE CITY OF WINNIPEG WATER AND WASTE DEPARTMENT ENGINEERING DIVISION</p>	
			DESIGNED BY: JT CHECKED BY: ND DRAWN BY: KJ APPROVED BY: AHL SCALE: 1:100 RELEASED FOR CONSTRUCTION BY: R. SOROKOWSKI DATE: 2005/07/13		ORIGINAL SIGNED BY: L.D. LLEWELLYN DATE: 2006/03/29 CONSULTANT DRAWING NO.: WF-E0106
B.M. ELEV.		00 ISSUED FOR TENDER 06/03/29 LL NO. REVISIONS DATE BY DATE 2005/07/13 DATE 2006/03/29			