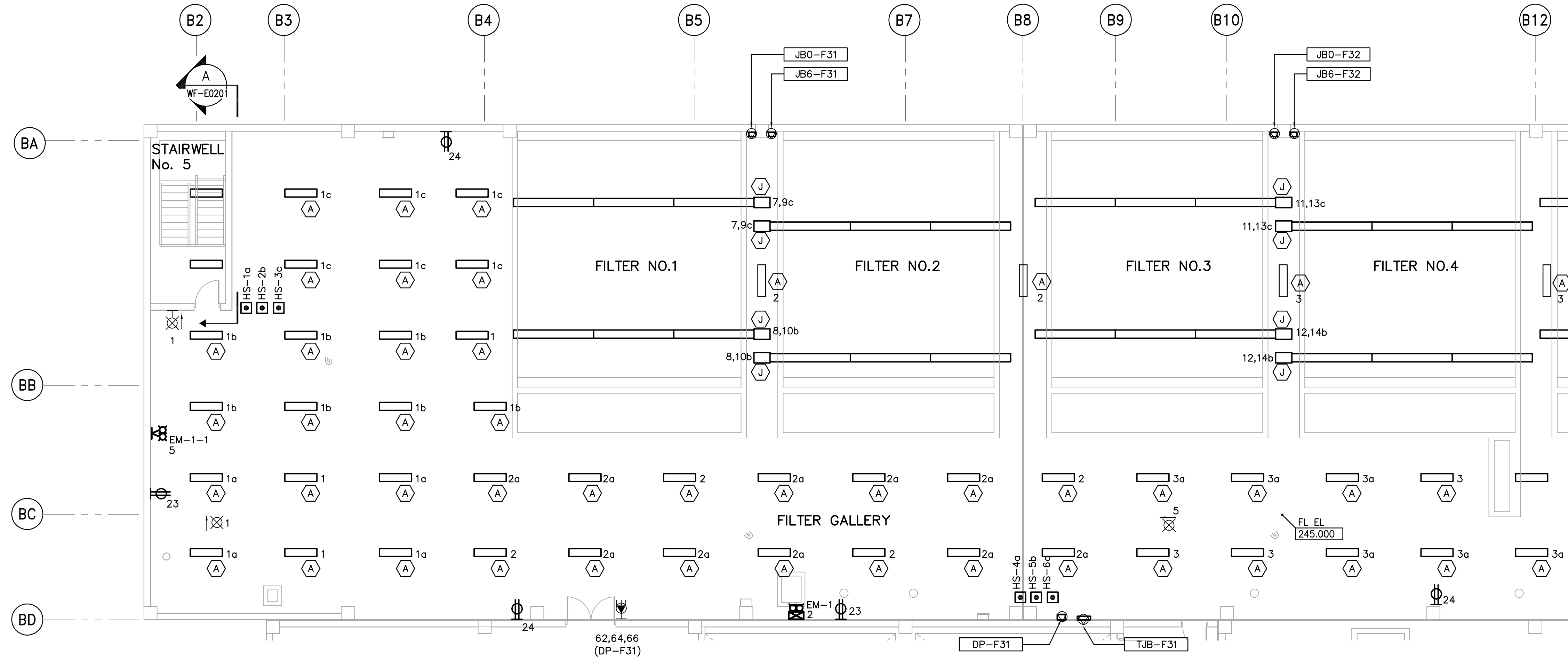
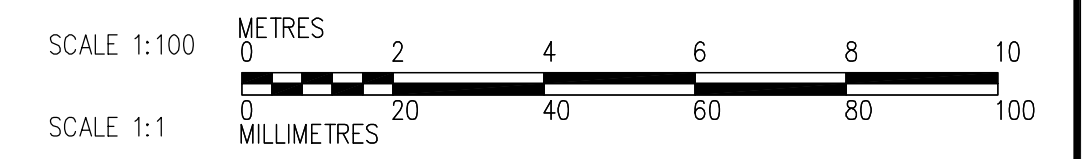
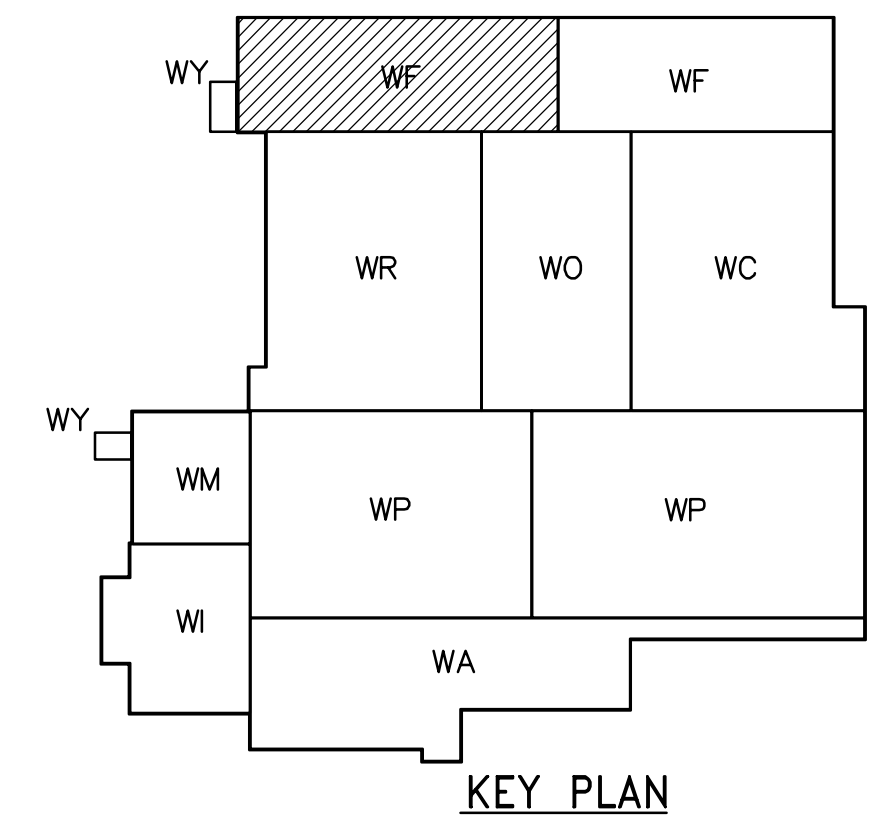


- NOTES:
1. ALL 120V AND 208V LOADS ARE FED FROM LP-H31
 2. EMERGENCY LIGHTING EM-X-1 ARE FED FROM BATTERY PACK EM-X.
 3. MOUNT TYPE A LUMINAIRE AT 3.0m ABOVE THE FLOOR.
 4. SEE DWG WB-E0401 FOR TYPE A FIXTURE MOUNTING DETAILS
 5. SEE DWG WB-E402 DET 2 FOR TYPE J FIXTURE MOUNTING DETAILS



THIRD FLOOR POWER AND LIGHTING PLAN (AREA 1)
1:100



<p>APEGN Certificate of Authorization CH2M HILL Canada Ltd. No. 1441 Expiry: April 30, 2006</p>	<p>Frederickson Cooper ARCHITECTS</p>	<p>EarthTech A You International Ltd. Company</p>	ENGINEER'S SEAL ORIGINAL SIGNED BY L.D. LLEWELLYN 2006/03/29	<p>THE CITY OF WINNIPEG WATER AND WASTE DEPARTMENT ENGINEERING DIVISION</p>	
			CONSULTANT DRAWING NO. WF-E0135		WATER TREATMENT PLANT FILTRATION MECHANICAL AND ELECTRICAL
DESIGNED BY LL CHECKED BY ND DRAWN BY PS APPROVED BY AHL SCALE: 1:100 RELEASED FOR CONSTRUCTION BY: R. SOROKOWSKI			CITY DRAWING NUMBER 1-0601F-A-E0135-001-000		
B.M. ELEV.		NO. REVISIONS DATE BY DATE 2005/07/13 DATE 2006/03/29		ELECTRICAL FILTRATION AREA 1 THIRD FLOOR POWER AND LIGHTING PLAN	