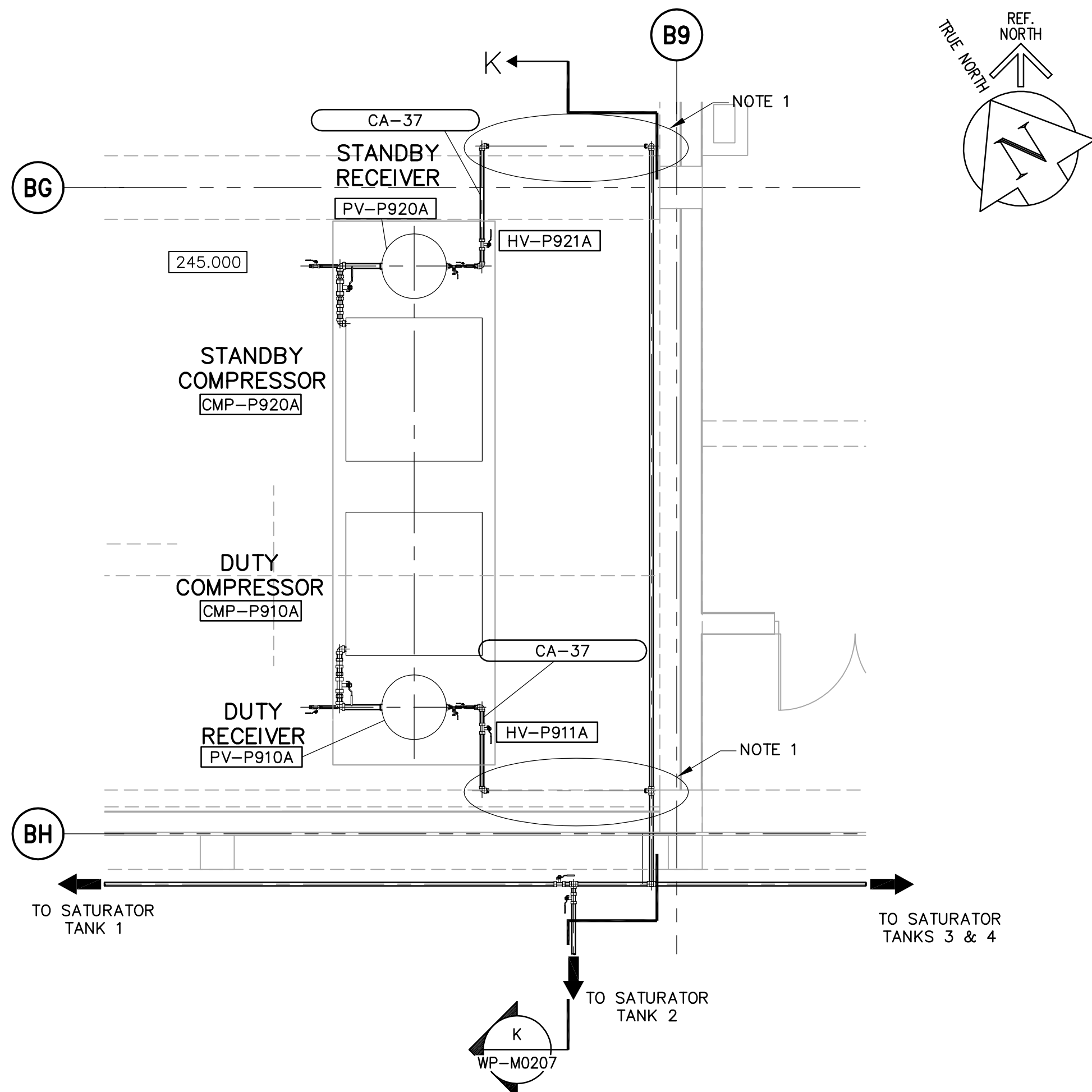
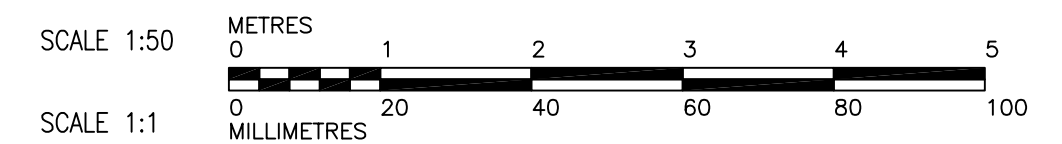
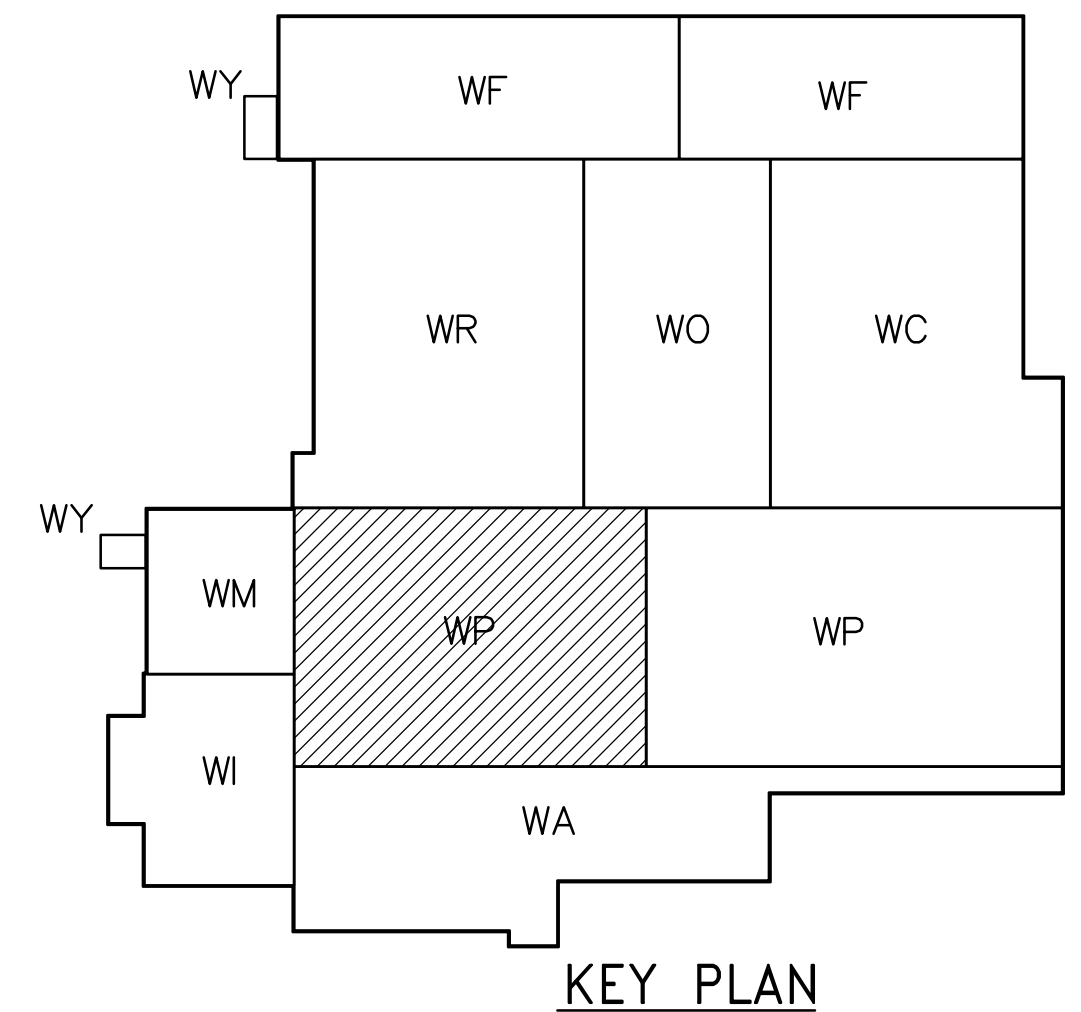


G SECTION - RECYCLE COMPRESSORS AND RECEIVERS
 WP-M0110 1:50
 WP-M0115
 WP-M0130



9 PLAN - RECYCLE COMPRESSORS AND RECEIVERS
 WP-M0130 1:50



NOTES:
 1. FILTER & FILTER BYPASS STATION. SEE P&ID. C OF FILTER INLETS AND DISCHARGES SHALL BE AT EL. 246.200. FILTER BYPASS LINE SHALL BE HIGH ENOUGH ABOVE FILTERS TO ALLOW CLEARANCE TO REMOVE FILTER CARTRIDGES. TYPICAL FOR BOTH DUTY AND STANDBY FILTER SYSTEMS.
 2. FOR ADDITIONAL INFORMATION ON PIPE EMBEDS, REFER TO SERIES WP-M9000 DRAWINGS.

APEGM
 Certificate of Authorization
 Earth Tech Canada Inc.
 No. 730 Expiry: April 30, 2006

NO.	REVISIONS	DATE	BY	DATE
00	ISSUED FOR TENDER	06/03/29	PL	

CH2MHILL Frederickson Cooper ARCHITECTS		EarthTech A Tech International Ltd. Company	
DESIGNED BY	KAS	CHECKED BY	SMB
DRAWN BY	P.L./LPT/LC	APPROVED BY	AHL
SCALE:	1:150	RELEASED FOR CONSTRUCTION BY:	R. SOROKOWSKI
DATE	2005/09/30	DATE	2006/03/29

ENGINEER'S SEAL
 ORIGINAL SIGNED BY
 S.M. BREESE
 2006/03/29
 CONSULTANT DRAWING NO.
 WP-M0205

THE CITY OF WINNIPEG
 WATER AND WASTE DEPARTMENT
 ENGINEERING DIVISION
 WATER TREATMENT PLANT
 FLOCCULATION AND DAF
 MECHANICAL AND ELECTRICAL
 PROCESS MECHANICAL
 SECTIONS G & L
 CITY FILE NUMBER
 SHEET OF
 CITY DRAWING NUMBER
 1-0601P-A-M0205-001-00D