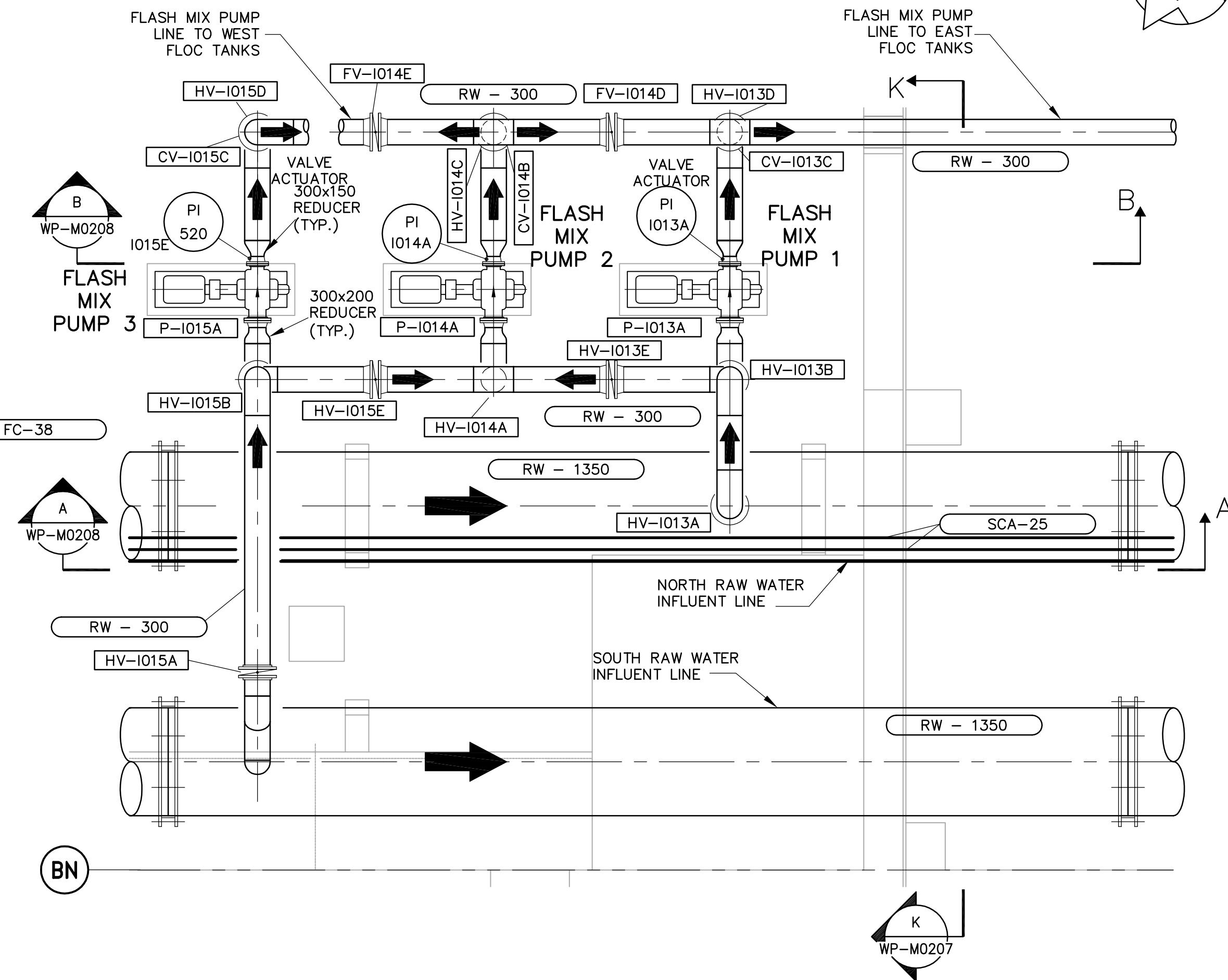
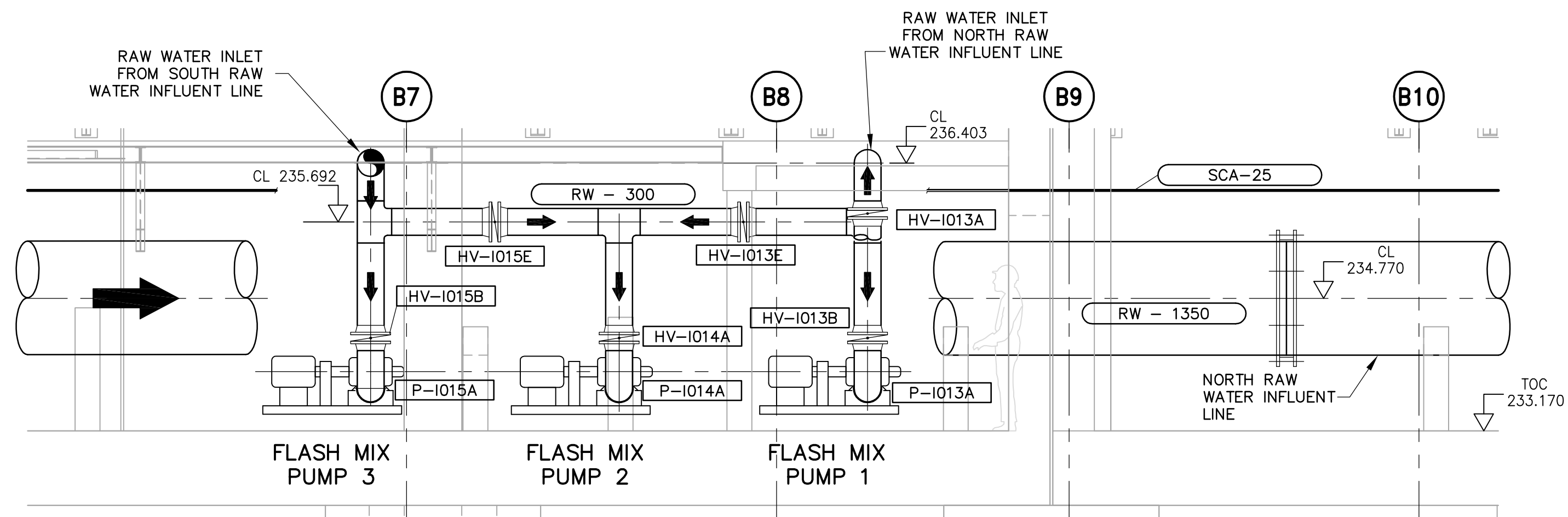


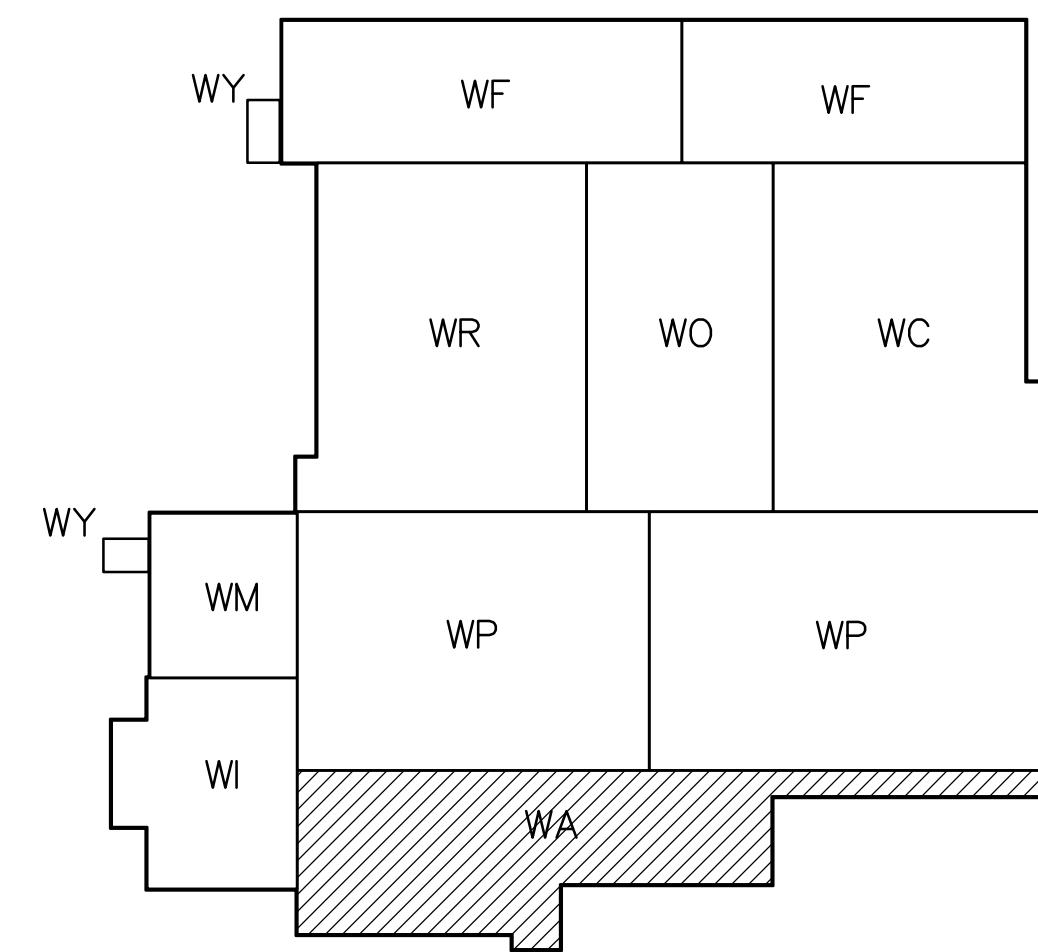
**B SECTION - FLASH PUMP DISCHARGE**  
 WP-M0110, 1:50  
 WP-M0111



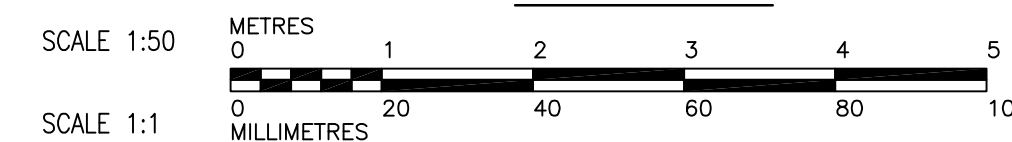
**10 PLAN - FLASH PUMP SYSTEM**  
 WP-M0110, 1:50  
 WP-M0111



**A SECTION - FLASH PUMPS**  
 WP-M0110, 1:50  
 WP-M0111



**KEY PLAN**



- NOTES:  
 1. FOR ADDITIONAL INFORMATION ON PIPE EMBEDS, REFER TO SERIES WP-M9000 DRAWINGS.  
 2. PROVIDE FLEXIBLE COUPLINGS ON THE SUCTION AND DISCHARGE OF ALL PROCESS PUMPS.



NO.	REVISIONS	DATE	BY	DATE	PL
00	ISSUED FOR TENDER	06/03/29	PL		

<b>CH2MHILL</b> Frederickson Cooper ARCHITECTS		<b>EarthTech</b> A Tyco International Ltd. Company	
DESIGNED BY: KAS	CHECKED BY: SMB	DESIGNED BY: P.L./LPT/LC	CHECKED BY: AHL
SCALE: 1:75	RELEASED FOR CONSTRUCTION BY: R. SOROKOWSKI	DATE: 2005/09/30	DATE: 2006/03/29

ENGINEER'S SEAL	ORIGINAL SIGNED BY: S.M. BREESE	DATE: 2006/03/29
CONSULTANT DRAWING NO. WP-M0208		

**THE CITY OF WINNIPEG**  
 WATER AND WASTE DEPARTMENT  
 ENGINEERING DIVISION

WATER TREATMENT PLANT FLOCCULATION AND DAF MECHANICAL AND ELECTRICAL	CITY FILE NUMBER
PROCESS MECHANICAL SECTIONS A & B - FLASH PUMPS	SHEET OF
	CITY DRAWING NUMBER
	1-0601P-A-M0208-001-000