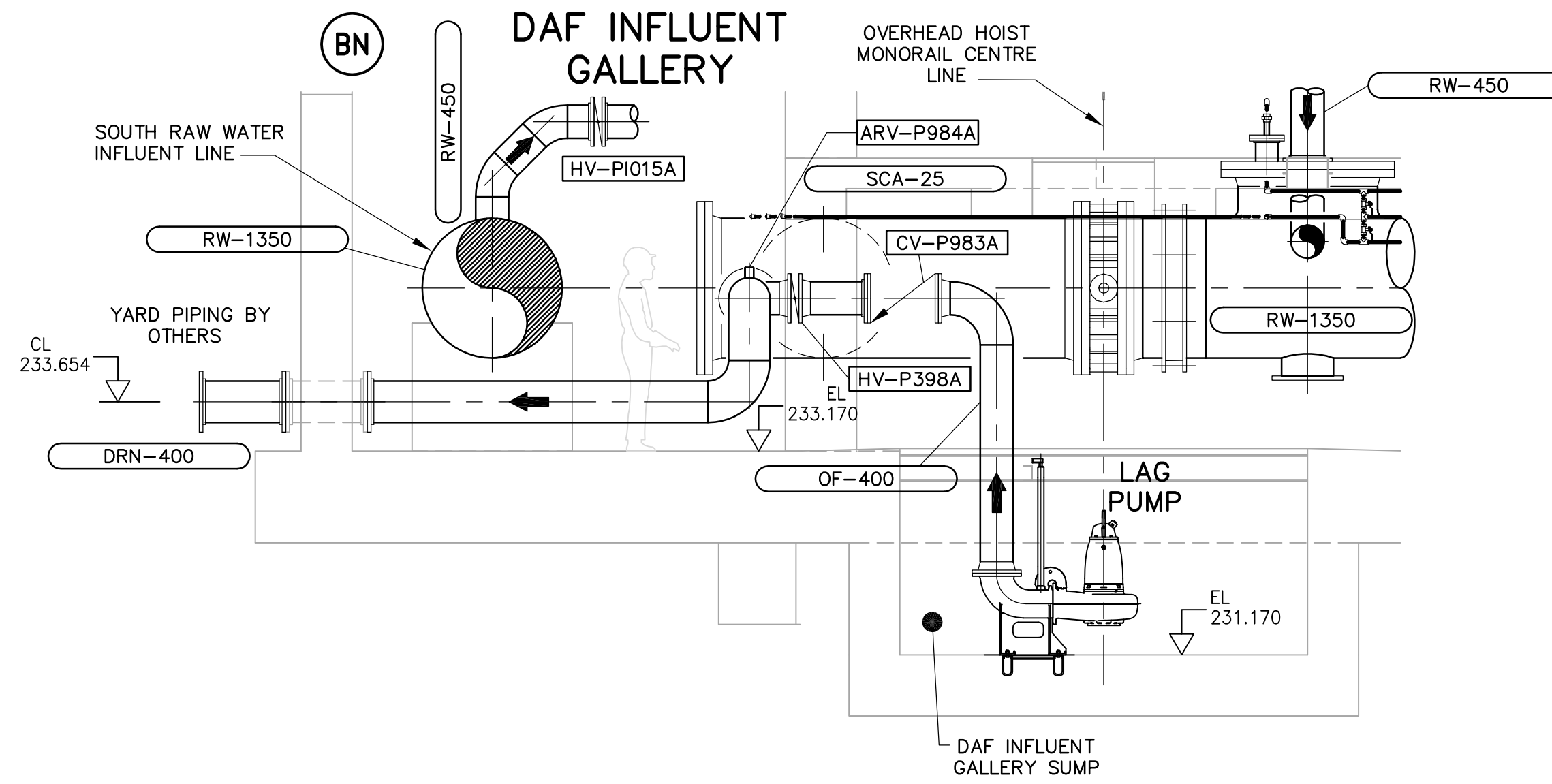
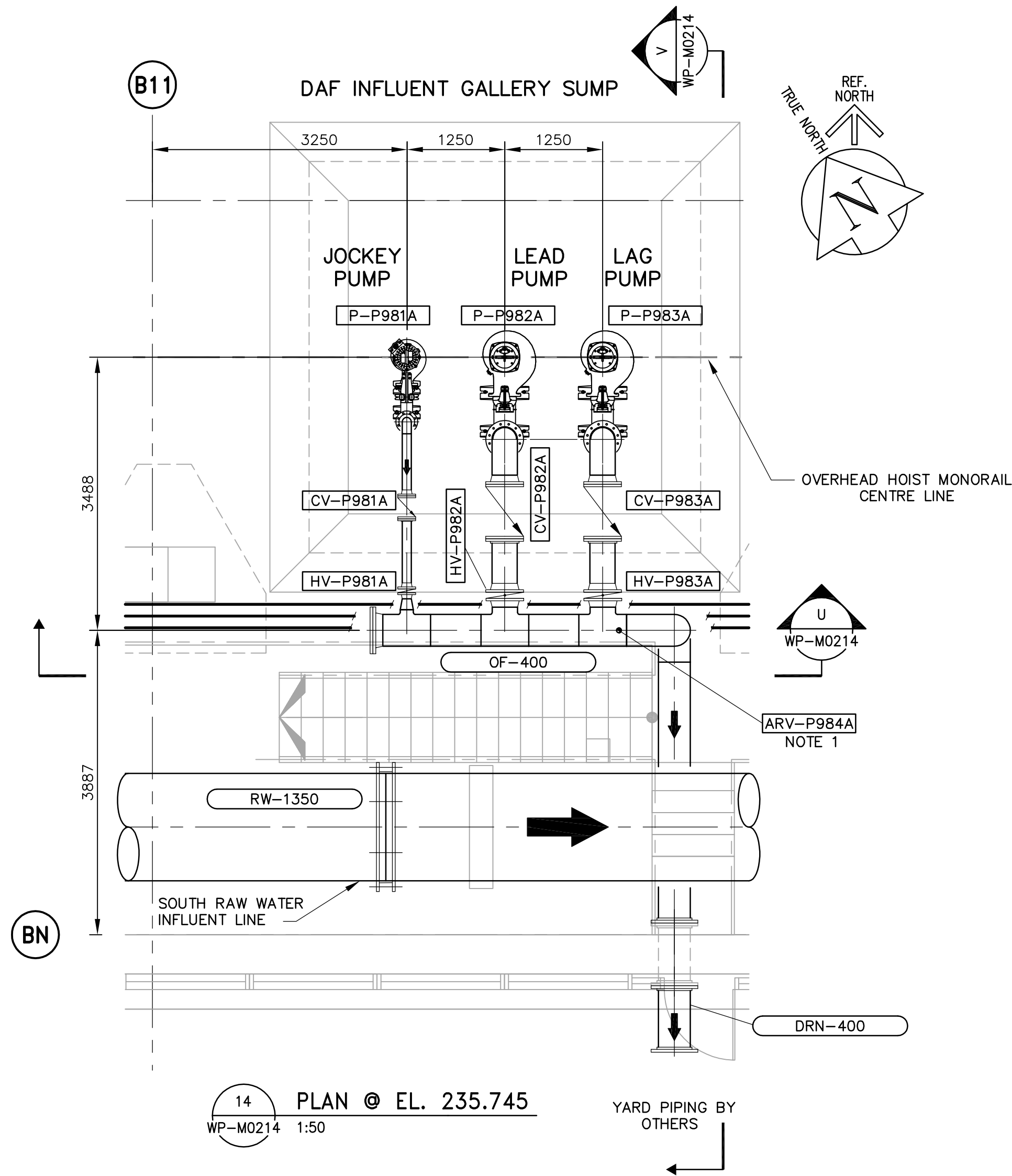


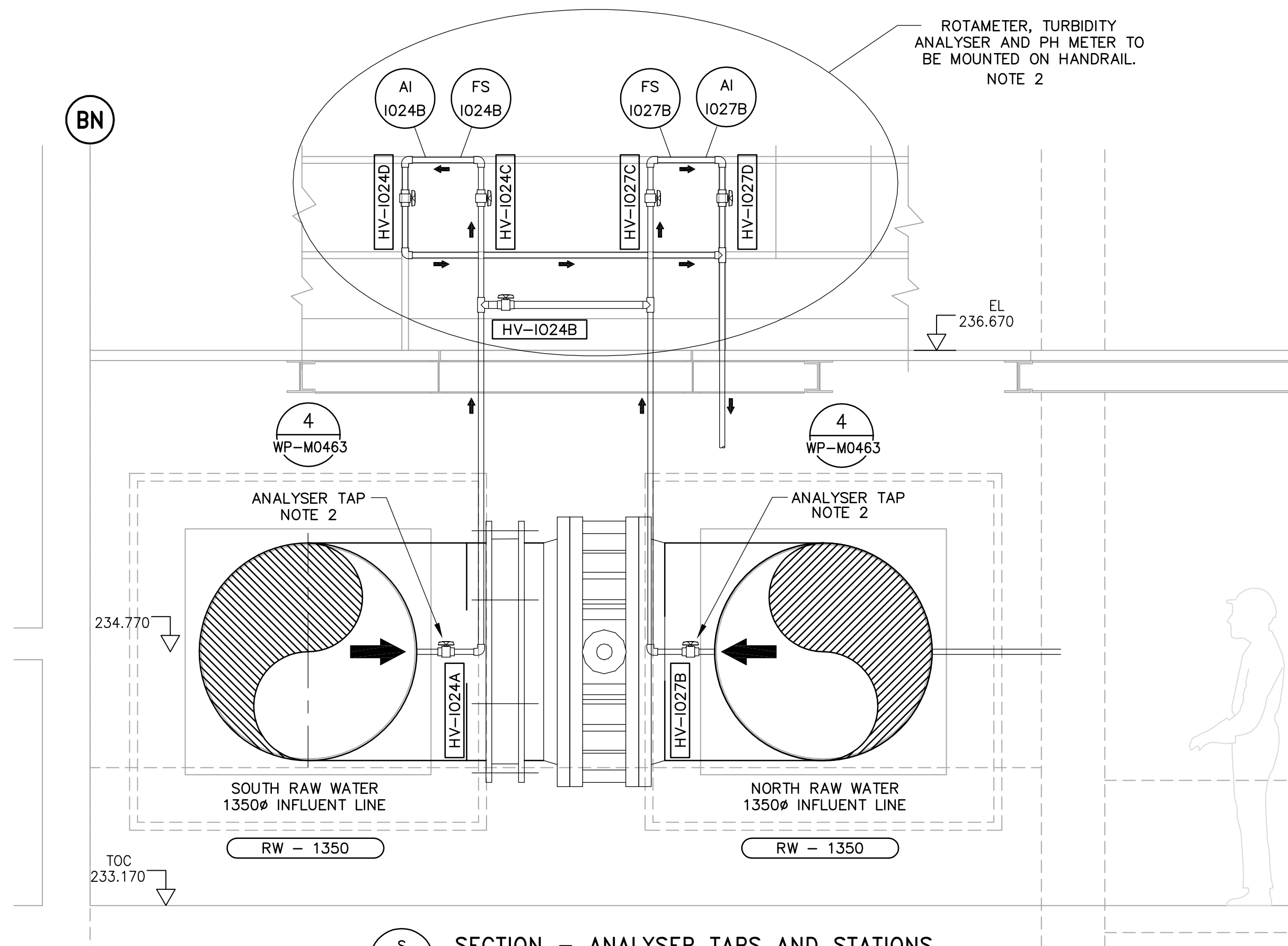
U SECTION - INFLUENT GALLERY SUMP PUMPS
WP-M0214 1:50



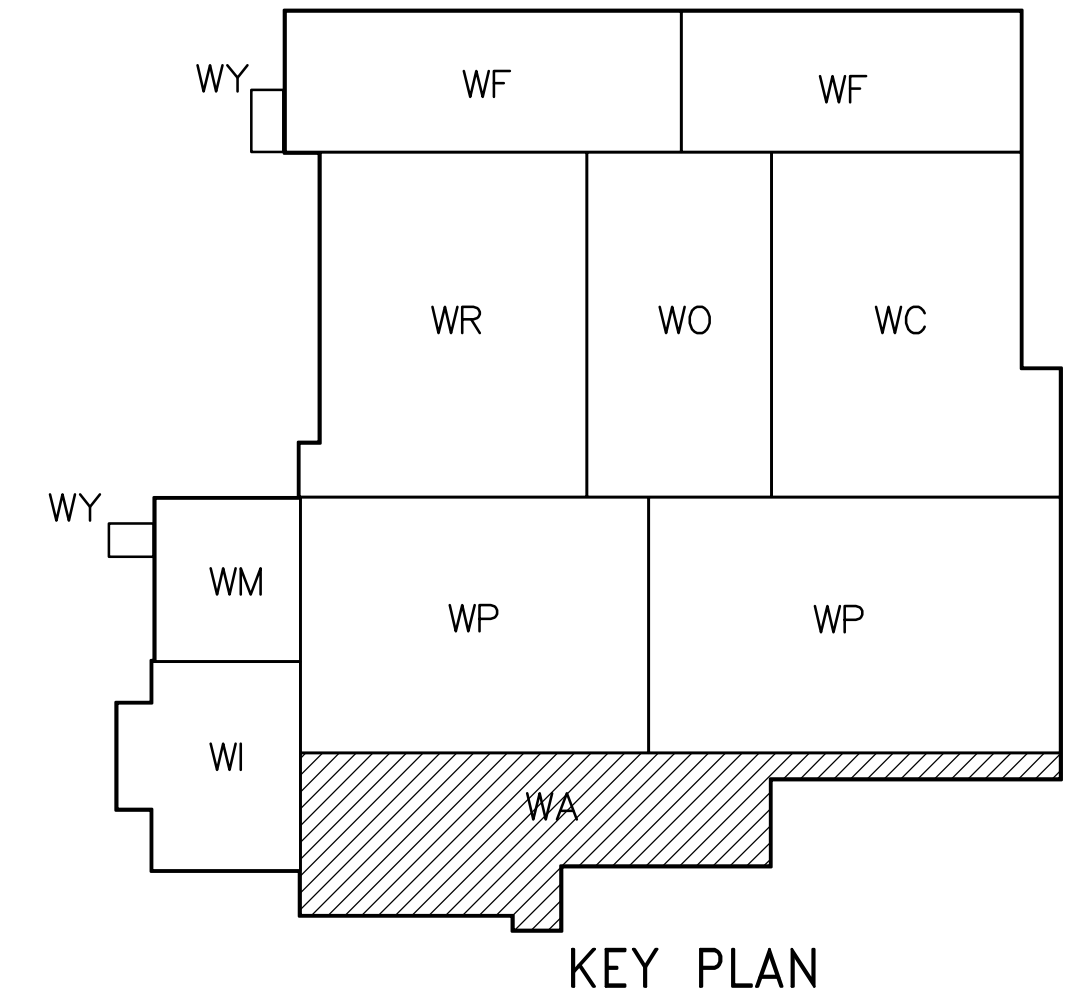
V SECTION - INFLUENT GALLERY SUMP PUMPS
WP-M0214 1:50



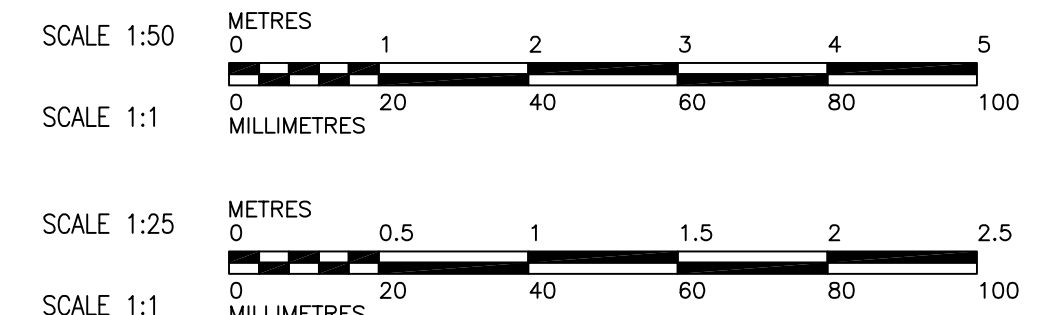
14 PLAN @ EL. 235.745
WP-M0214 1:50



S SECTION - ANALYSER TAPS AND STATIONS
WP-M0111 1:25



KEY PLAN



NOTES:
1. RUN AIR RELEASE VALVE DRAIN BACK TO PROCESS SUMP.
2. RUN ANALYSER SAMPLE LINES UP TO PLATFORM @ 236.67m LEVEL. INSTALL ROTAMETER, PH METER AND TURBIDITY METER ALONG HANDRAILS OF PLATFORM. REFER TO INSTRUMENTATION DRAWINGS FOR STANDARD DETAILS. COMBINE DRAIN LINES FROM ANALYSERS AND AIR RELIEF VALVES AND RUN UNDER THE PLATFORM TO THE HUB DRAIN AT FLOOR ELEVATION 233.170m.
3. FOR ADDITIONAL INFORMATION ON PIPE EMBEDS, REFER TO SERIES WP-M9000 DRAWINGS.

<p>Certificate of Authorization Earth Tech Canada Inc. No. 730 Expiry: April 30, 2006</p>		<p>Frederickson Cooper ARCHITECTS</p>		<p>A Type International Ltd. Company</p>	
DESIGNED BY	KAS	CHECKED BY	SMB	ENGINEER'S SEAL	
DRAWN BY	PL/LPT/LC	APPROVED BY	AHL	ORIGINAL SIGNED BY S.M. BREESE 2006/03/29	
SCALE:	1:50	RELEASED FOR CONSTRUCTION BY:	R. SOROKOWSKI	CONSULTANT DRAWING NO. WP-M0214	
00 ISSUED FOR TENDER	06/03/29	DATE	2005/12/09	CITY FILE NUMBER	
NO. REVISIONS	DATE	BY	DATE	SHEET OF	

THE CITY OF WINNIPEG
 WATER AND WASTE DEPARTMENT
 ENGINEERING DIVISION
 WATER TREATMENT PLANT
 FLOCCULATION AND DAF
 MECHANICAL AND ELECTRICAL
 PROCESS MECHANICAL
 DAF INFLUENT GALLERY
 PLANS AND SECTIONS
 CITY DRAWING NUMBER
 1-0601P-A-M0214-001-000