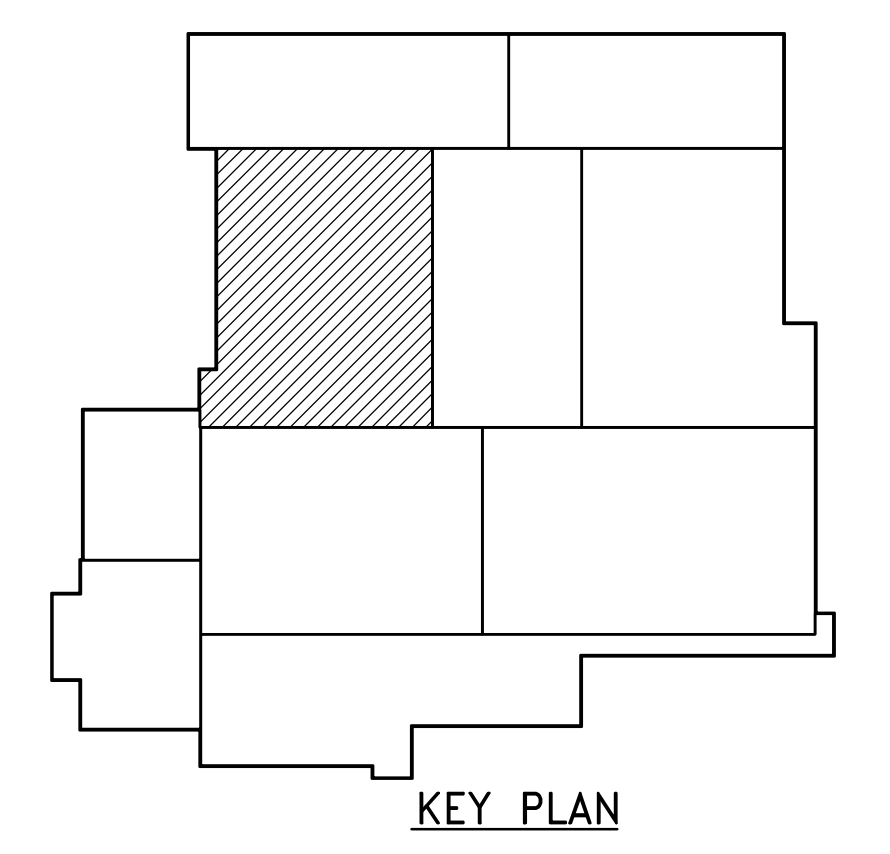
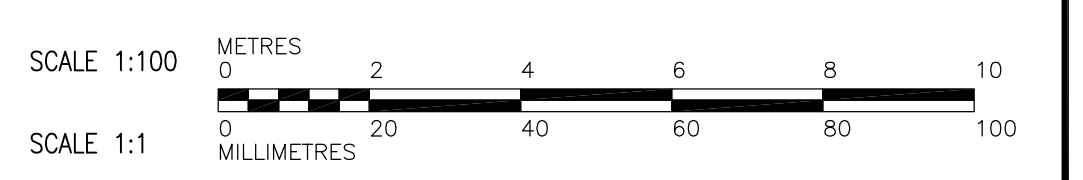


SEE DWG WR-M0112

SEE DWG WR-M0113



PLAN AT ELEVATION 239.000
1:100



- NOTES:
1. TO BE SUPPLIED AND INSTALLED UNDER BID OPPORTUNITY No. 583-2005.
 2. ALL SLUICE GATES TO BE SUPPLIED UNDER BID OPPORTUNITY No. 561-2005 AND INSTALLED UNDER THIS CONTRACT.
 3. TO BE SUPPLIED BY GRAVITY THICKENER VENDOR AS A PACKAGE UNDER THIS CONTRACT.
 4. FOR ADDITIONAL INFORMATION ON PIPE EMBEDS REFER TO SERIES WR-M9000 DRAWINGS.

<p>Certificate of Authorization Earth Tech Canada Inc. No. 730 Expiry: April 30, 2006</p>	B.M. ELEV.	<p>Frederickson Cooper ARCHITECTS</p>	<p>A Tech International Ltd. Company</p>	ENGINEER'S SEAL	<p>THE CITY OF WINNIPEG WATER AND WASTE DEPARTMENT ENGINEERING DIVISION</p>				
				DESIGNED BY SM		CHECKED BY SRB	ORIGINAL SIGNED BY S.R. BILEVICIUS		
				DRAWN BY JBC		APPROVED BY AHL	2006/03/29		
	SCALE: 1:100	RELEASED FOR CONSTRUCTION BY: R. SOROKOWSKI		CONSULTANT DRAWING NO. WR-M0111	CITY FILE NUMBER				
	NO. REVISIONS	DATE	BY	DATE	2005/09/29	DATE	2006/03/29	PROCESS MECHANICAL FIRST FLOOR PLAN	CITY DRAWING NUMBER 1-0601R-A-M0111-001-000