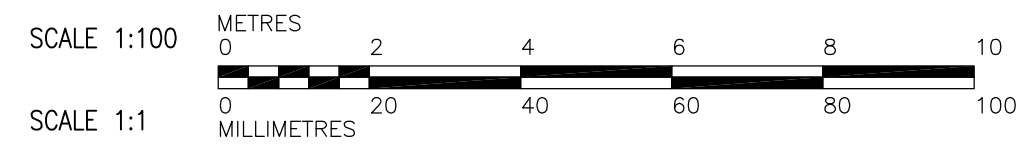
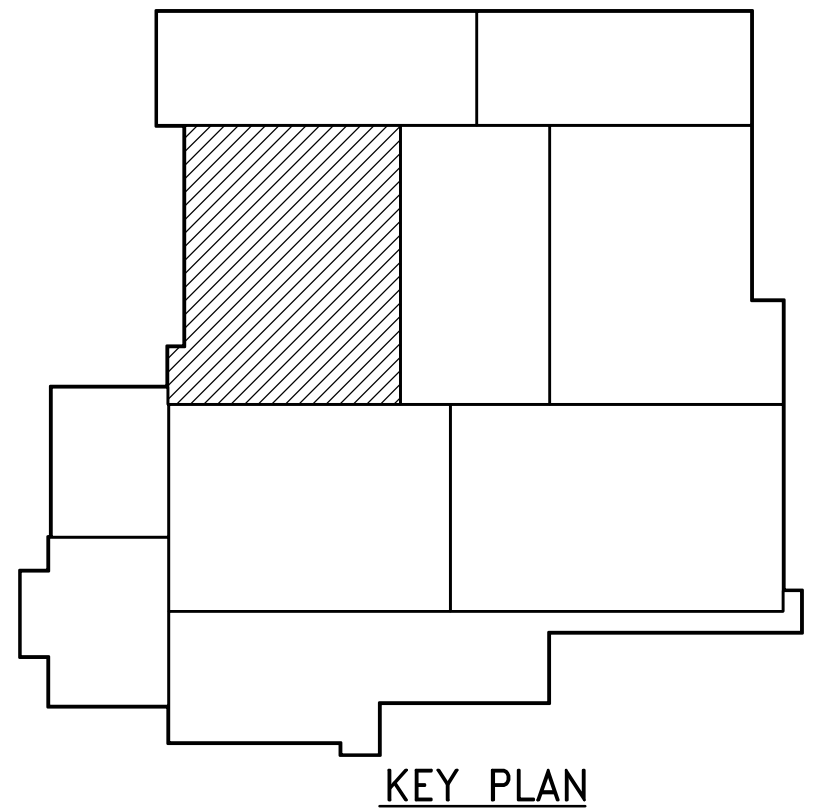


| FOOT TRAFFIC GRATING THICKNESS TABLE |          |       |
|--------------------------------------|----------|-------|
| MAXIMUM SPAN                         | ALUMINUM | STEEL |
| 1050                                 | 32       | 25    |
| 1200                                 | 38       | 25    |
| 1350                                 | 44       | 25    |
| 1500                                 | 44       | 32    |
| 1650                                 | 51       | 32    |
| 1800                                 | 57       | 38    |
| 1950                                 | 57       | 38    |
| 2100                                 | 64       | 44    |

**GENERAL NOTES:**

1. EXTEND GRATING CONTINUOUSLY OVER GATE GUIDES AND GATES.
2. NOTCH GRATING SUPPORTS AT GATES AS REQUIRED.
3. GRATING SPAN SEE PLAN.
4. WIDTH OF GRATING SECTIONS SHALL NOT EXCEED 900mm.
5. SHOP DRAWINGS BASED ON FIELD DIMENSIONS SHALL BE SUBMITTED TO THE CONTRACT ADMINISTRATOR PRIOR TO FABRICATION.
6. MATERIAL FOR SUPPORTS OF STEEL AND ALUMINUM GRATING TO BE SAME AS GRATING, EXCEPT METAL SUPPORTS THAT ARE TO BE EMBEDDED IN CONCRETE SHALL BE TYPE 316 STAINLESS STEEL.
7. UNLESS NOTED OTHERWISE ON PLANS, GRATING THICKNESS SHALL BE AS TABULATED IN "GRATING THICKNESS TABLE" FOR APPLICABLE TRAFFIC.
8. BEARING BAR THICKNESS FOR GRATING TO BE 5mm MINIMUM.
9. BAND ALL EDGES WITH 5mm x DEPTH OF BEARING BAR.
10. PROVIDE MISCELLANEOUS GRATING FASTENERS AS REQUIRED.
11. TYPE OF MATERIAL USED SHALL BE AS SHOWN ON PLANS OR AS SPECIFIED. THIS STANDARD DETAIL INCLUDES 2 TYPES, ALTHOUGH BOTH MAY NOT BE INCLUDED IN PROJECT.
12. THE HORIZONTAL CLEARANCE BETWEEN THE GRATING AND GRATING SUPPORTS SHALL NOT BE LESS THAN 6mm NOR GREATER THAN 13mm AND AS SPECIFIED.
13. ALL GRATING SECTIONS, WHEN IN PLACE, SHALL ALWAYS BE FIRMLY ANCHORED TO THEIR SUPPORTS AS SPECIFIED.
14. MIN BEARING HORIZONTAL DIMENSION = 25mm FOR GRATING DEPTH 57mm OR LESS, MIN BEARING HORIZONTAL = 50mm FOR GRATING DEPTH GREATER THAN 57mm

1 STANDARD ALUMINUM GRATING N.T.S.



- NOTES:**
1. TO BE SUPPLIED AND INSTALLED UNDER BID OPPORTUNITY No. 583-2005.
  2. ALL SLUICE GATES TO BE SUPPLIED UNDER BID OPPORTUNITY No. 561-2005 AND INSTALLED UNDER THIS CONTRACT.
  3. TO BE SUPPLIED BY GRAVITY THICKENER VENDOR AS A PACKAGE AND INSTALLED UNDER THIS CONTRACT.
  4. TO BE SUPPLIED AND INSTALLED BY OTHERS
  5. FOR ADDITIONAL INFORMATION ON PIPE EMBEDS REFER TO SERIES WR-M9000 DRAWINGS.

**APCA**  
 Certificate of Authorization  
 Earth Tech Canada Inc.  
 No. 730 Expiry: April 30, 2006

| DESIGNED BY   |                   | CHECKED BY                    |            |
|---------------|-------------------|-------------------------------|------------|
| SM            | SRB               |                               |            |
| DRAWN BY      |                   | APPROVED BY                   |            |
| JBC           | AHL               |                               |            |
| SCALE:        |                   | RELEASED FOR CONSTRUCTION BY: |            |
| 1:100         | R. SOROKOWSKI     |                               |            |
| NO. REVISIONS |                   | DATE                          |            |
| 00            | ISSUED FOR TENDER | 06/03/29                      | JBC        |
|               |                   | DATE                          | 2005/09/29 |

ENGINEER'S SEAL  
 ORIGINAL SIGNED BY  
 S.R. BILEVICIUS  
 2006/03/29  
 CONSULTANT DRAWING NO.  
 WR-M0121

**THE CITY OF WINNIPEG**  
 WATER AND WASTE DEPARTMENT  
 ENGINEERING DIVISION  
 WATER TREATMENT PLANT  
 RESIDUALS HANDLING  
 MECHANICAL AND ELECTRICAL  
 PROCESS MECHANICAL  
 SECOND FLOOR PLAN  
 CITY FILE NUMBER  
 SHEET OF  
 CITY DRAWING NUMBER  
 1-0601R-A-M0121-001-000