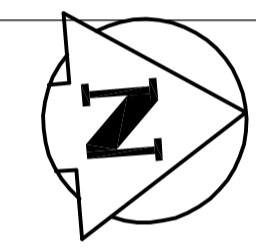
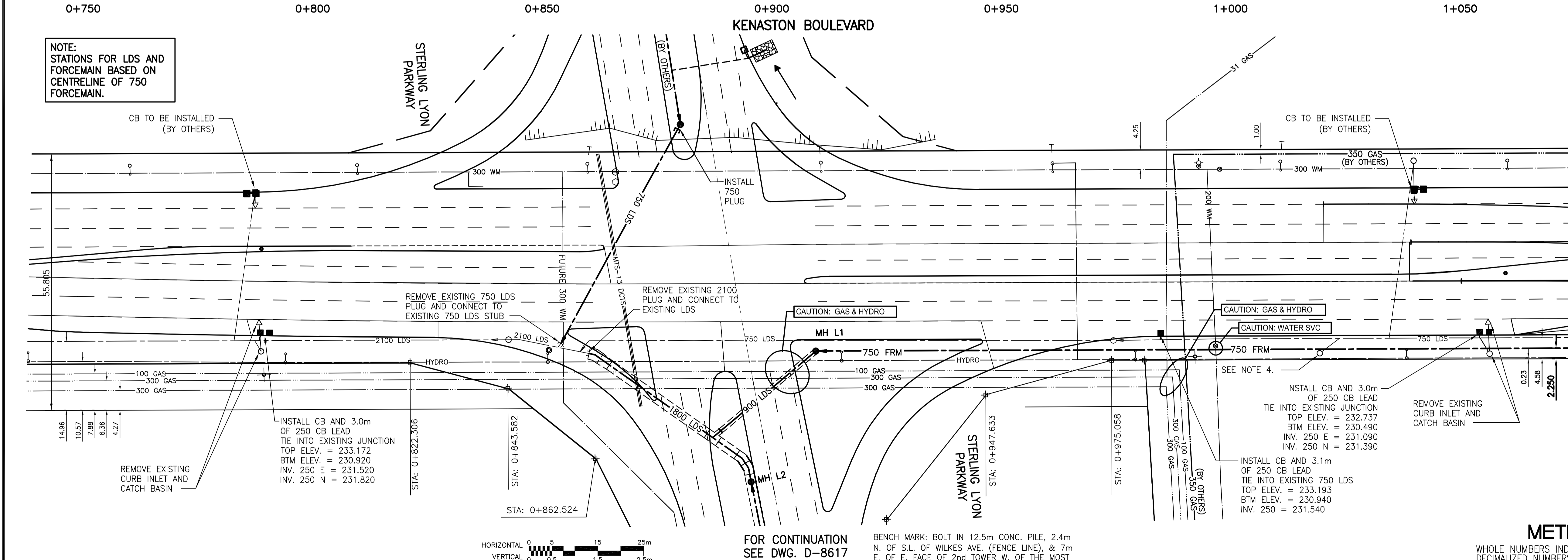


NOTE:
STATIONS FOR LDS AND
FORCEMAIN BASED ON
CENTRELINE OF 750
FORCEMAIN.



- NOTES:
- DOUBLE INLETS TO BE SD-023 AND SD-024 WITH SD-108 COVER, SEE DETAIL DWG D-8631.
 - ALL INLETS TO HAVE 250mm INTER CONNECTION PIPING AND 300 LEADS TO MAIN LINE, SEE DETAIL DWG D-8631.
 - WATER SERVICE AT STATION 0+977.61 TO BE EXPOSED BY CONTRACTOR PRIOR TO FORCEMAIN CONSTRUCTION. CONTRACT ADMINISTRATOR SHALL DETERMINE IF CONFLICT EXISTS WITH PROPOSED FORCEMAIN. IF WARRANTED, WATER SERVICE TO BE RE-ROUTED AT THE DIRECTION OF THE CONTRACT ADMINISTRATOR.
 - CATCHMENT AREA FOR CATCHBASIN AT STA. 1+020.400 IS UNKNOWN. CONTRACT ADMINISTRATOR TO PERFORM FIELD INVESTIGATION AFTER SPRING THAW AND PROVIDE DIRECTION TO CONTRACTOR.
 - MULTI-USE SIDEWALK NOT SHOWN FOR CLARITY. REFER TO PAVEMENT DWG. P-3258-13 FOR ADDITIONAL INFORMATION.

WARNING

IF POWER EQUIPMENT OR EXPLOSIVES ARE TO BE USED FOR EXCAVATION ON THIS PROJECT THE CONTRACTOR MUST:
 1) NOTIFY THE GAS COMPANY OF THE PROPOSED LOCATION OF EXCAVATION.
 2) TAKE PRECAUTION TO AVOID DAMAGE TO GAS COMPANY INSTALLATIONS.
 SEE PROVINCIAL REGULATION 140/92 FOR DETAILS



Certificate of Authorization
 Stantec Consulting Ltd.
 No. 1301 Expiry: April 30, 2005

METRIC

WHOLE NUMBERS INDICATE MILLIMETRES
 DECIMALIZED NUMBERS INDICATE METRES

—	GAS	○	MANHOLE	●	HYDRANT	+
—	MTS	□	CATCH BASIN/CATCH PIT	■	WATERMAIN VALVE	+
—	HYDRO	△	C & G INLET WITH BOX	▲	GAS LINE MARKER	+
—	VEDEON	⊙	TREE	⊙	LIGHT STANDARD	+
—	TRAFFIC SIGNALS	⊙	TEST HOLE	⊙	GUY WIRE	+
—	LAND DRAINAGE SEWER	—	PROPERTY LINE	—	TRAFFIC SIGNAL	+
—	SANITARY/COMBINED SEWER	—	SURVEY BAR	—	SIGN	+
—	CATCHBASIN LEAD	—	GEODEIC MONUMENT	—	SIGNAL PIT	+
—	WATERMAIN	—	FENCE	—	HYDRO MARKER	+
—	SUBDRAIN	—	BACK OF CURB	—	BOLLARD	+
—	DITCH	—	ELEVATION	—	FORCEMAIN	+
—	EXISTING	—	LEGEND - PLAN	—	EXISTING	—
—	NEW	—	LEGEND - PLAN	—	NEW	—

LOCATION APPROVED UNDERGROUND STRUCTURES

SUPV. U/G STRUCTURES COMMITTEE DATE

NOTE:
 LOCATION OF UNDERGROUND STRUCTURES AS SHOWN ARE BASED ON THE BEST INFORMATION AVAILABLE BUT NO GUARANTEE IS GIVEN THAT ALL EXISTING UTILITIES ARE SHOWN OR THAT THE GIVEN LOCATIONS ARE EXACT. CONFIRMATION OF EXISTENCE AND EXACT LOCATION OF ALL SERVICES MUST BE OBTAINED FROM THE INDIVIDUAL UTILITIES BEFORE PROCEEDING WITH CONSTRUCTION.

B.M.	66-001	
ELEV.	233.425m	
NO.	REVISIONS	DATE BY
1	ISSUED FOR TENDER	05.03.29 GWM
0	ISSUED FOR CLIENT REVIEW	05.02.28 AJR

Stantec Consulting Ltd.

905 Waverley Street, Winnipeg, Manitoba
 Tel 204-489-5900 Fax 204-453-9012

DESIGNED BY: JKH
 CHECKED BY: AJR
 DRAWN BY: TAG
 APPROVED BY: GWM

HOR. SCALE: 1:500
 VERTICAL: 1:50

AUTHORIZED BY: R. FINGAS
 DATE: 05.03.24
 R. FINGAS, P. ENG.
 BRIDGE PROJECTS ENGINEER

ENGINEER'S SEAL

ORIGINAL SEALED BY
 A.J. RAPOSO
 P. ENG.
 05.03.24

CONSULTANT DRAWING NO.
 I13703042-U01

THE CITY OF WINNIPEG
 PUBLIC WORKS DEPARTMENT
 Winnipeg ENGINEERING DIVISION

KENASTON UNDERPASS
 STERLING LYON PARKWAY (EAST)

SHEET 31 OF 60
 CAD FILE DRAWING NUMBER ken-frm-ug.dwg
 CITY DRAWING NUMBER D-8616

LAND DRAINAGE SYSTEM
 STERLING LYON PARKWAY (EAST) TO STA 1+075