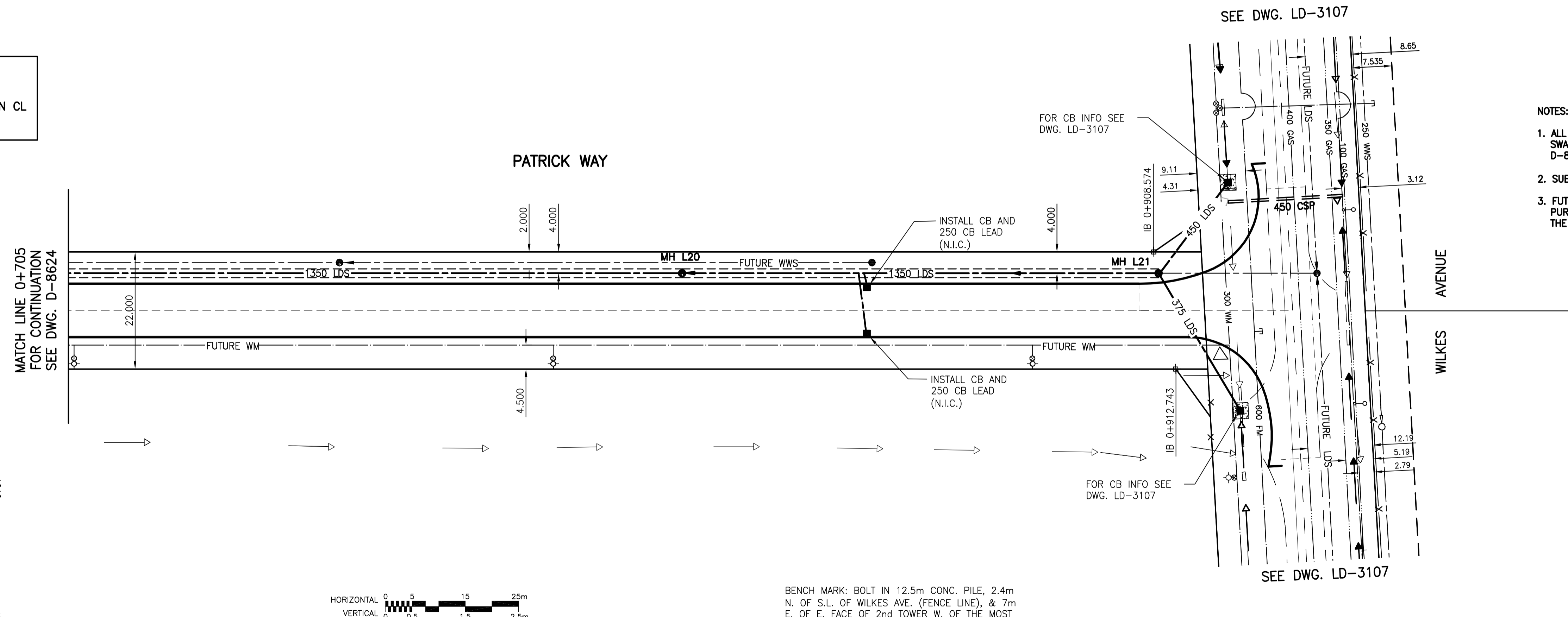


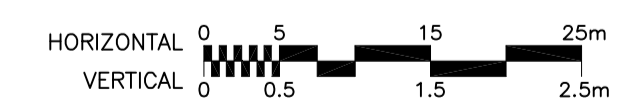
NOTE:
STATIONS FOR ALL UNDERGROUND BASED ON CL OF PATRICK WAY.



- NOTES:**
1. ALL CATCH BASINS INSTALLED IN DITCHES AND SWALES TO BE SD-025, SEE DETAIL DWG. D-8631.
 2. SUBDRAINS NOT SHOWN FOR CLARITY. (N.I.C.)
 3. FUTURE WM AND WWS SHOWN FOR INFORMATION PURPOSES. FINAL DESIGN TO BE CONFIRMED BY THE CITY OF WINNIPEG, WATER AND WASTE DEPT.

METRIC
WHOLE NUMBERS INDICATE MILLIMETRES
DECIMALIZED NUMBERS INDICATE METRES

WARNING
IF POWER EQUIPMENT OR EXPLOSIVES ARE TO BE USED FOR EXCAVATION ON THIS PROJECT THE CONTRACTOR MUST:
1) NOTIFY THE GAS COMPANY OF THE PROPOSED LOCATION OF EXCAVATION.
2) TAKE PRECAUTION TO AVOID DAMAGE TO GAS COMPANY INSTALLATIONS.
SEE PROVINCIAL REGULATION 140/92 FOR DETAILS



BENCH MARK: BOLT IN 12.5m CONC. PILE, 2.4m N. OF S.L. OF WILKES AVE. (FENCE LINE), & 7m E. OF E. FACE OF 2nd TOWER W. OF THE MOST ELY. SET OF TRACKS OF C.P.R. LA RIVIERE SUBD.

EXISTING	LEGEND - PLAN	NEW	EXISTING	LEGEND - PLAN	NEW	EXISTING	LEGEND - PLAN	NEW
○	GAS	○	MANHOLE	●	HYDRANT	+	LOCATION APPROVED UNDERGROUND STRUCTURES	
□	MTS	□	CATCH BASIN/CATCH PIT	●	WATERMAIN VALVE	+		
△	HYDRO	△	C & G INLET WITH BOX	▲	GAS LINE MARKER	+		
▽	VIDEO	△	TREE	○	LIGHT STANDARD	+		
—	TRAFFIC SIGNALS	⊙	TEST HOLE	—	GUY WIRE	+		
—	LAND DRAINAGE SEWER	—	PROPERTY LINE	—	TRAFFIC SIGNAL	+		
—	SANITARY/COMBINED SEWER	—	SURVEY BAR	—	SIGN	+		
—	CATCHBASIN LEAD	—	GEODETTIC MONUMENT	—	SIGNAL PIT	+		
—	WATERMAIN	—	FENCE	—	HYDRO MARKER	+		
—	SUBDRAIN	—	BACK OF CURB	—	BOLLARD	+		
—	DITCH	—	ELEVATION	—	FORCEMAIN	+		

LOCATION APPROVED UNDERGROUND STRUCTURES
SUPV. U/G STRUCTURES COMMITTEE DATE
NOTE: LOCATION OF UNDERGROUND STRUCTURES AS SHOWN ARE BASED ON THE BEST INFORMATION AVAILABLE BUT NO GUARANTEE IS GIVEN THAT ALL EXISTING UTILITIES ARE SHOWN OR THAT THE GIVEN LOCATIONS ARE EXACT. CONFIRMATION OF EXISTENCE AND EXACT LOCATION OF ALL SERVICES MUST BE OBTAINED FROM THE INDIVIDUAL UTILITIES BEFORE PROCEEDING WITH CONSTRUCTION.

B.M.	66-001		
ELEV.	233.425m		
NO.	REVISIONS	DATE	BY
1	ISSUED FOR TENDER	05.03.29	GWM
0	ISSUED FOR CLIENT REVIEW	05.02.28	AJR

Stantec Consulting Ltd.
905 Waverley Street, Winnipeg, Manitoba
Tel 204-489-5900 Fax 204-453-9012

DESIGNED BY	JKH	CHECKED BY	AJR
DRAWN BY	TAG	APPROVED BY	GWM
AUTHORIZED BY:	R. FINGAS	DATE:	05.03.24
R. FINGAS, P. ENG. BRIDGE PROJECTS ENGINEER			

ENGINEER'S SEAL
ORIGINAL SEALED BY
A.J. RAPOSO
P. ENG.
05.03.24

THE CITY OF WINNIPEG
PUBLIC WORKS DEPARTMENT
ENGINEERING DIVISION

Winnipeg

KENASTON UNDERPASS
STERLING LYON PARKWAY (EAST)

LAND DRAINAGE SYSTEM
STA 0+705 TO WILKES AVENUE

SHEET **40** OF **60**
CAD FILE DRAWING NUMBER
patrick-ug.dwg
CITY DRAWING NUMBER
D-8625

CONSULTANT DRAWING NO.
I13703042-U10

APEGM
Certificate of Authorization
Stantec Consulting Ltd.
No. 1301 Expiry: April 30, 2005