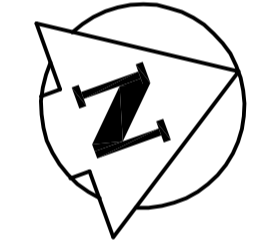
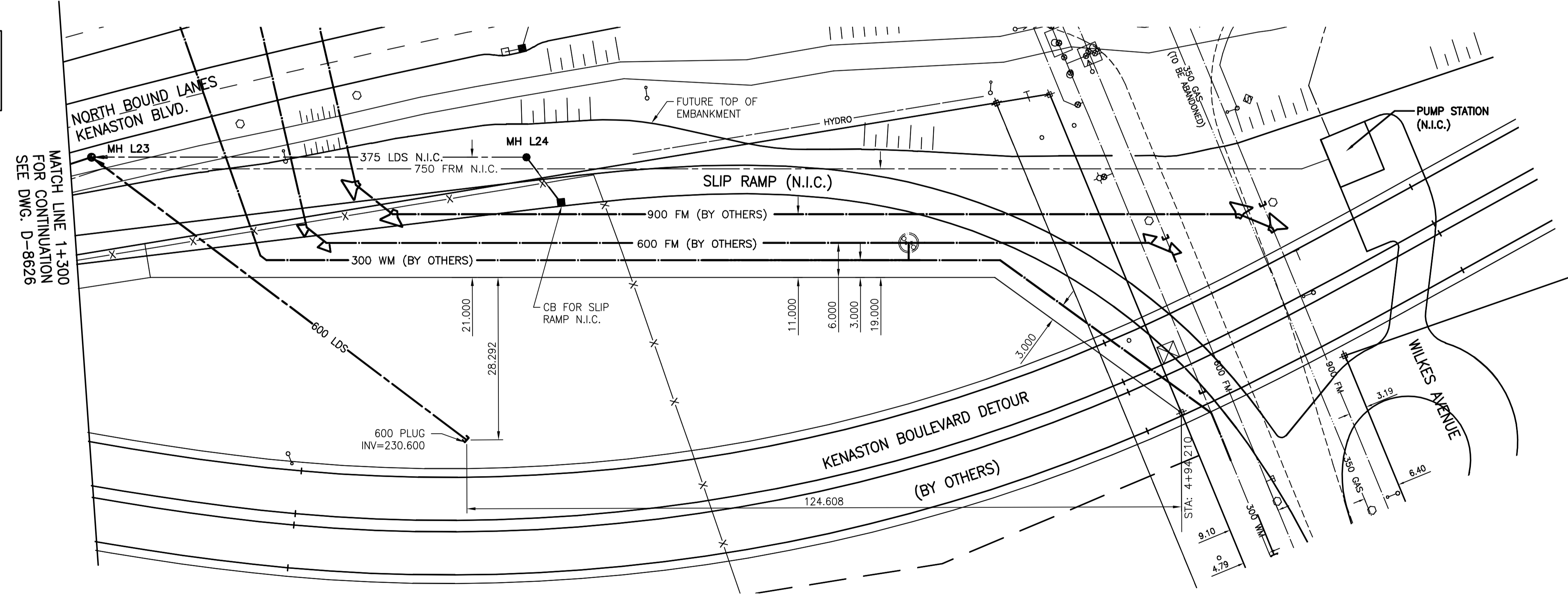


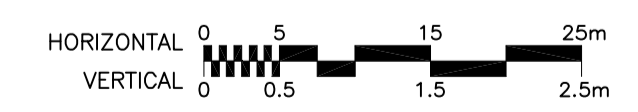
1+300 1+350 1+400 1+450 1+500

**KENASTON BOULEVARD**

**NOTE:**  
STATIONS FOR LDS AND FORCEMAIN BASED ON CENTRELINE OF 750 FORCEMAIN.



- NOTES:**
1. DOUBLE INLETS TO BE SD-023 AND SD-104 WITH SD-108 COVER, SEE DETAIL DWG ???
  2. ALL INLETS TO HAVE 250mm INTER CONNECTION PIPING AND 300 LEADS TO MAIN LINE, SEE DETAIL DWG D-8631.



BENCH MARK: BOLT IN 12.5m CONC. PILE, 2.4m N. OF S.L. OF WILKES AVE. (FENCE LINE), & 7m E. OF E. FACE OF 2nd TOWER W. OF THE MOST ELY. SET OF TRACKS OF C.P.R. LA RIVIERE SUBD.

**METRIC**  
WHOLE NUMBERS INDICATE MILLIMETRES  
DECIMALIZED NUMBERS INDICATE METRES

**WARNING**

IF POWER EQUIPMENT OR EXPLOSIVES ARE TO BE USED FOR EXCAVATION ON THIS PROJECT THE CONTRACTOR MUST:  
1) NOTIFY THE GAS COMPANY OF THE PROPOSED LOCATION OF EXCAVATION.  
2) TAKE PRECAUTION TO AVOID DAMAGE TO GAS COMPANY INSTALLATIONS.  
SEE PROVINCIAL REGULATION 140/92 FOR DETAILS

**APEGM**  
Certificate of Authorization  
Stantec Consulting Ltd.  
No. 1301 Expiry: April 30, 2005

---	GAS	○	MANHOLE	●	+	HYDRANT	+
---	MTS	□	CATCH BASIN/CATCH PIT	■	+	WATERMAIN VALVE	+
---	HYDRO	△	C & G INLET WITH BOX	▲	+	GAS LINE MARKER	+
---	VIDEO	⊙	TREE	+	+	LIGHT STANDARD	+
---	TRAFFIC SIGNALS	⊙	TEST HOLE	+	+	GUY WIRE	+
---	LAND DRAINAGE SEWER	+	PROPERTY LINE	+	+	TRAFFIC SIGNAL	+
---	SANITARY/COMBINED SEWER	+	SURVEY BAR	+	+	SIGN	+
---	CATCHBASIN LEAD	+	GEODETTIC MONUMENT	+	+	SIGNAL PIT	+
---	WATERMAIN	+	FENCE	+	+	HYDRO MARKER	+
---	SUBDRAIN	+	BACK OF CURB	+	+	BOLLARD	+
---	DITCH	+	ELEVATION	+	+	FORCEMAIN	+
---	EXISTING	---	LEGEND - PLAN	---	---	LEGEND - PLAN	---
---	NEW	---	EXISTING	---	---	NEW	---

**LOCATION APPROVED UNDERGROUND STRUCTURES**

SUPV. U/G STRUCTURES COMMITTEE DATE

**NOTE:**  
LOCATION OF UNDERGROUND STRUCTURES AS SHOWN ARE BASED ON THE BEST INFORMATION AVAILABLE BUT NO GUARANTEE IS GIVEN THAT ALL EXISTING UTILITIES ARE SHOWN OR THAT THE GIVEN LOCATIONS ARE EXACT. CONFIRMATION OF EXISTENCE AND EXACT LOCATION OF ALL SERVICES MUST BE OBTAINED FROM THE INDIVIDUAL UTILITIES BEFORE PROCEEDING WITH CONSTRUCTION.

B.M.	66-001			
ELEV.	233.425m			
DESIGNED BY	JKH			
CHECKED BY	AJR			
DRAWN BY	TAG			
APPROVED BY	AJR			
AUTHORIZED BY	R. FINGAS			
DATE	05.03.24			
NO.	1			
ISSUED FOR TENDER	05.03.29	GWM		
NO.	0			
ISSUED FOR CLIENT REVIEW	05.02.28	AJR		
NO.	REVISIONS	DATE	BY	DATE

**Stantec Consulting Ltd.**  
905 Waverley Street, Winnipeg, Manitoba  
Tel 204-489-5900 Fax 204-453-9012

DESIGNED BY: JKH  
CHECKED BY: AJR  
DRAWN BY: TAG  
APPROVED BY: AJR  
AUTHORISED BY: R. FINGAS  
DATE: 05.03.24  
R. FINGAS, P. ENG.  
BRIDGE PROJECTS ENGINEER

ENGINEER'S SEAL  
ORIGINAL SEALED BY  
A.J. RAPOSO  
P. ENG.  
05.03.24  
CONSULTANT DRAWING NO.  
**I13703042-UI7**

**THE CITY OF WINNIPEG**  
PUBLIC WORKS DEPARTMENT  
ENGINEERING DIVISION

**KENASTON UNDERPASS**  
STERLING LYON PARKWAY (EAST)

LAND DRAINAGE SYSTEM  
STA 1+300 TO WILKES AVENUE

SHEET 47 OF 60  
CAD FILE DRAWING NUMBER  
ken-trm-ug.dwg  
CITY DRAWING NUMBER  
**D-8627**