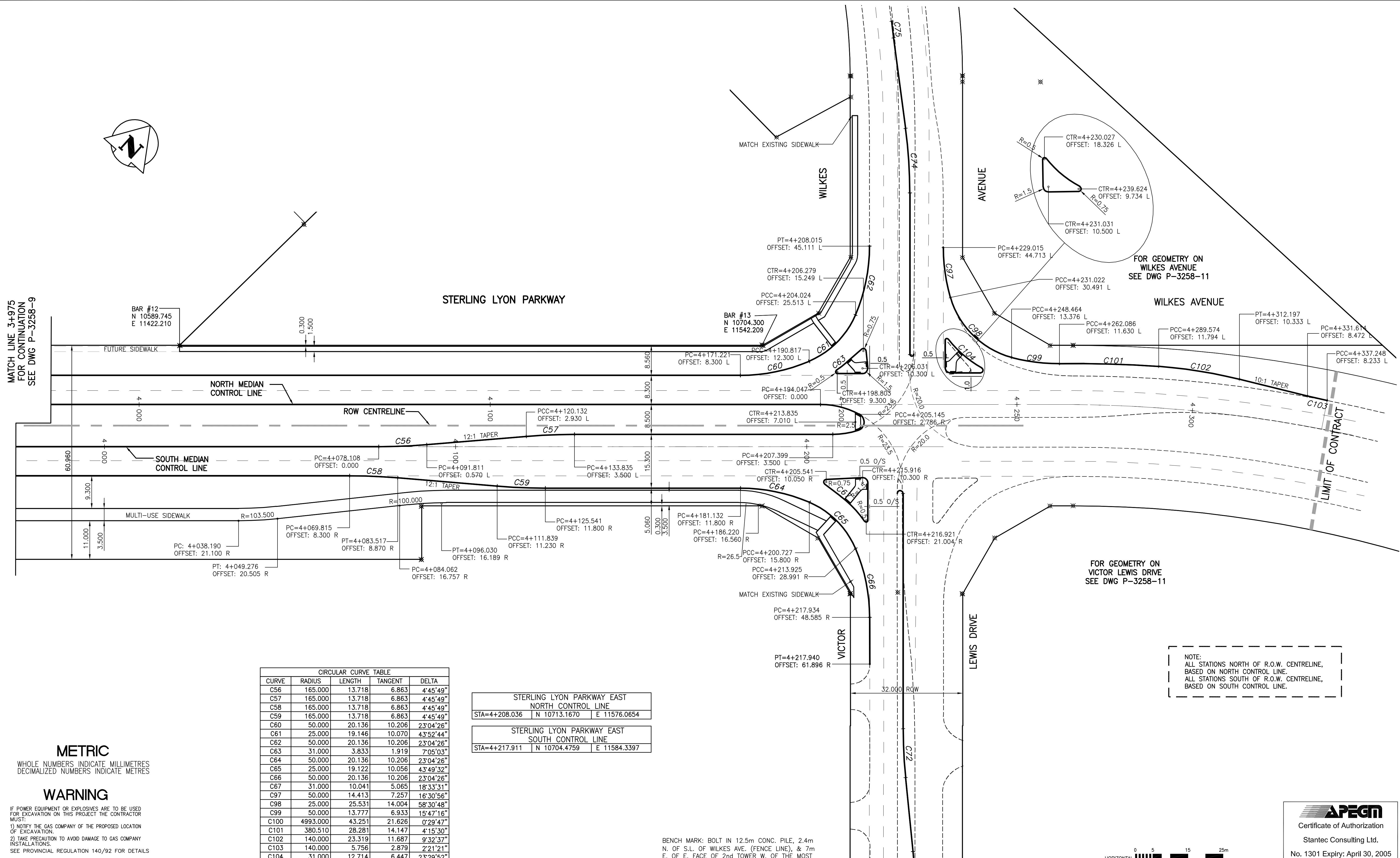


MATCH LINE 3+975 FOR CONTINUATION SEE DWG P-3258-9



STERLING LYON PARKWAY

FOR GEOMETRY ON WILKES AVENUE SEE DWG P-3258-11

FOR GEOMETRY ON VICTOR LEWIS DRIVE SEE DWG P-3258-11

CURVE	RADIUS	LENGTH	TANGENT	DELTA
C56	165.000	13.718	6.863	4'45'49"
C57	165.000	13.718	6.863	4'45'49"
C58	165.000	13.718	6.863	4'45'49"
C59	165.000	13.718	6.863	4'45'49"
C60	50.000	20.136	10.206	23'04'26"
C61	25.000	19.146	10.070	43'52'44"
C62	50.000	20.136	10.206	23'04'26"
C63	31.000	3.833	1.919	7'05'03"
C64	50.000	20.136	10.206	23'04'26"
C65	25.000	19.122	10.056	43'49'32"
C66	50.000	20.136	10.206	23'04'26"
C67	31.000	10.041	5.065	18'33'31"
C97	50.000	14.413	7.257	16'30'56"
C98	25.000	25.531	14.004	58'30'48"
C99	50.000	13.777	6.933	15'47'16"
C100	4993.000	43.251	21.626	0'29'47"
C101	380.510	28.281	14.147	4'15'30"
C102	140.000	23.319	11.687	9'32'37"
C103	140.000	5.756	2.879	2'21'21"
C104	31.000	12.714	6.447	23'29'52"

STERLING LYON PARKWAY EAST NORTH CONTROL LINE		
STA=4+208.036	N 10713.1670	E 11576.0654
STERLING LYON PARKWAY EAST SOUTH CONTROL LINE		
STA=4+217.911	N 10704.4759	E 11584.3397

NOTE: ALL STATIONS NORTH OF R.O.W. CENTRELINE, BASED ON NORTH CONTROL LINE. ALL STATIONS SOUTH OF R.O.W. CENTRELINE, BASED ON SOUTH CONTROL LINE.

METRIC
WHOLE NUMBERS INDICATE MILLIMETRES
DECIMALIZED NUMBERS INDICATE METRES

WARNING

IF POWER EQUIPMENT OR EXPLOSIVES ARE TO BE USED FOR EXCAVATION ON THIS PROJECT THE CONTRACTOR MUST:
1) NOTIFY THE GAS COMPANY OF THE PROPOSED LOCATION OF EXCAVATION.
2) TAKE PRECAUTION TO AVOID DAMAGE TO GAS COMPANY INSTALLATIONS.
SEE PROVINCIAL REGULATION 140/92 FOR DETAILS

BENCH MARK: BOLT IN 12.5m CONC. PILE, 2.4m N. OF S.L. OF WILKES AVE. (FENCE LINE), & 7m E. OF E. FACE OF 2nd TOWER W. OF THE MOST ELY. SET OF TRACKS OF C.P.R. LA RIVIERE SUBD.



EXISTING	LEGEND - PLAN	NEW	EXISTING	LEGEND - PLAN	NEW	EXISTING	LEGEND - PLAN	NEW	
	GAS		MANHOLE		CONCRETE PAVEMENT		LOCATION APPROVED		B.M.
	MTS		CATCH BASIN/CATCH PIT		ASPHALT PAVEMENT		UNDERGROUND STRUCTURES		ELEV.
	HYDRO		C & G INLET WITH BOX		CONC. SIDEWALK/MED. SLAB		DATE		DATE
	VIDEON		TREE		PAVING STONE		U/G STRUCTURES		DATE
	TRAFFIC SIGNALS		TEST HOLE		TOPSOIL & SOD		DATE		DATE
	LAND DRAINAGE SEWER		PROPERTY LINE		GRAVEL		DATE		DATE
	SANITARY/COMBINED SEWER		SURVEY BAR		RAMP CURB		DATE		DATE
	CATCHBASIN LEAD		GEODETIC MONUMENT		REMOVAL		DATE		DATE
	WATERMAIN		FENCE		BACK OF CURB		DATE		DATE
	SUBDRAIN		ELEVATION		LEGEND - PLAN		DATE		DATE
	DITCH		LEGEND - PLAN		LEGEND - PLAN		DATE		DATE

NOTE: LOCATION OF UNDERGROUND STRUCTURES AS SHOWN ARE BASED ON THE BEST INFORMATION AVAILABLE BUT NO GUARANTEE IS GIVEN THAT ALL EXISTING UTILITIES ARE SHOWN THAT THE GIVEN LOCATIONS ARE EXACT. CONFIRMATION OF EXISTENCE AND EXACT LOCATION OF ALL SERVICES MUST BE OBTAINED FROM THE INDIVIDUAL UTILITIES BEFORE PROCEEDING WITH CONSTRUCTION.

B.M.	66-001		
ELEV.	233.425m		
NO.	REVISIONS	DATE	BY
1	ISSUED FOR TENDER	05.03.29	GWM
0	ISSUED FOR CLIENT REVIEW	05.02.28	TAS

Stantec Consulting Ltd.
905 Waverley Street, Winnipeg, Manitoba
Tel 204-489-5900 Fax 204-453-9012

DESIGNED BY: TAS
CHECKED BY: TAS, WKB
DRAWN BY: TAG
APPROVED BY: GWM
HORIZONTAL SCALE: AS SHOWN
VERTICAL SCALE: N/A

AUTHORIZED BY: R. FINGAS, P. ENG. BRIDGE PROJECTS ENGINEER
DATE: 05.03.24

ENGINEER'S SEAL
ORIGINAL SEALED BY G.W. MOURANT P. ENG. 05.03.24
CONSULTANT DRAWING NO. I13703042-H08

THE CITY OF WINNIPEG
PUBLIC WORKS DEPARTMENT
ENGINEERING DIVISION

Winnipeg

KENASTON UNDERPASS
STERLING LYON PARKWAY (EAST)

HORIZONTAL GEOMETRY
STA 3+975 TO STA 4+337.197

SHEET 10 OF 60
CAD FILE DRAWING NUMBER s1pe-geom.dwg
CITY DRAWING NUMBER P-3258-10

APEGM
Certificate of Authorization
Stantec Consulting Ltd.
No. 1301 Expiry: April 30, 2005