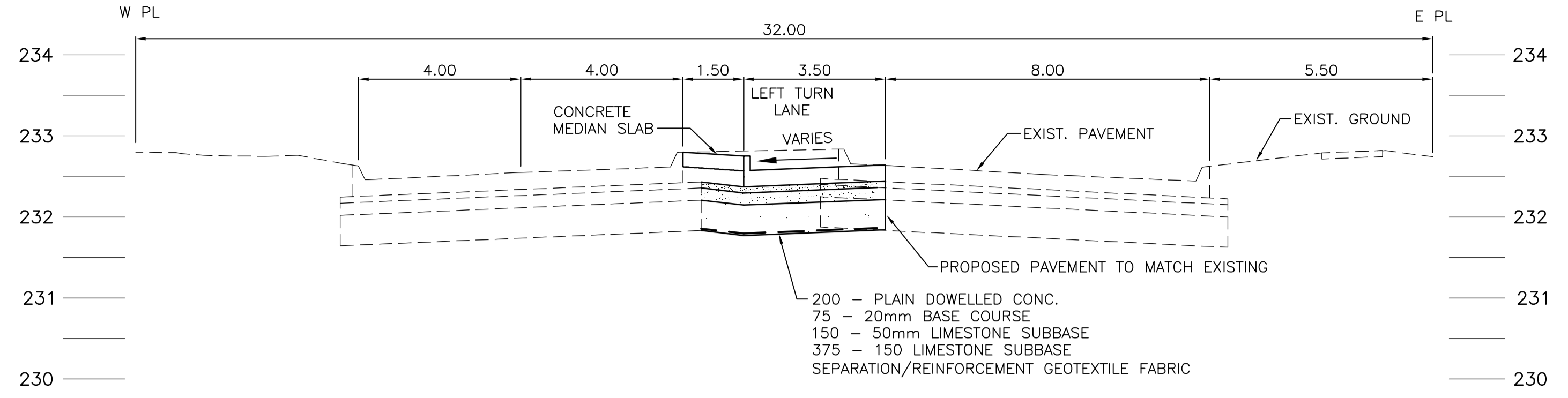
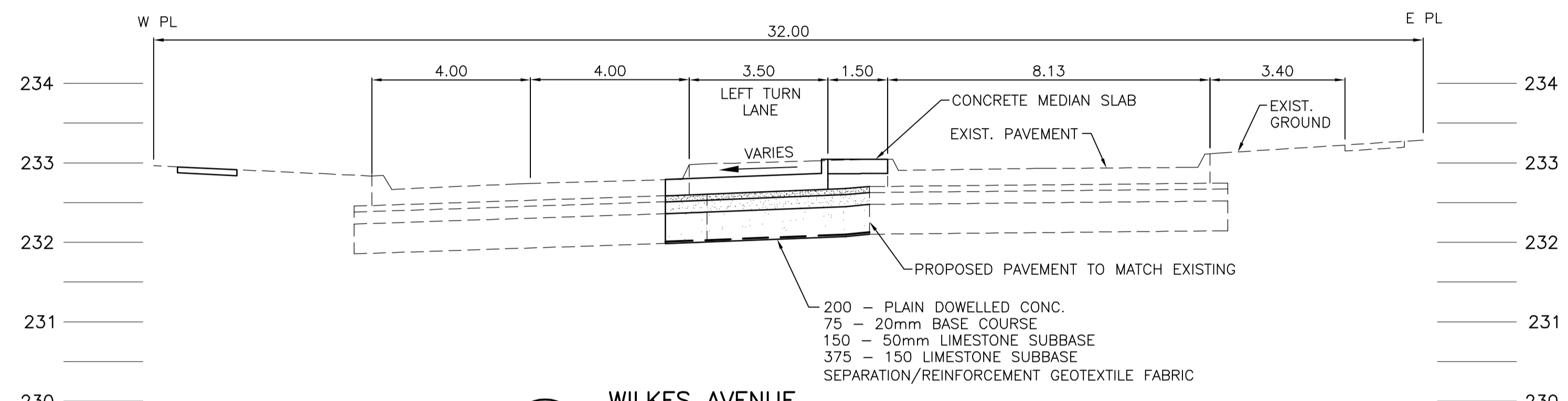


PATRICK WAY SECTION @ STA 0+500
 SCALE: HOR. 1:100
 VERT. 1:50

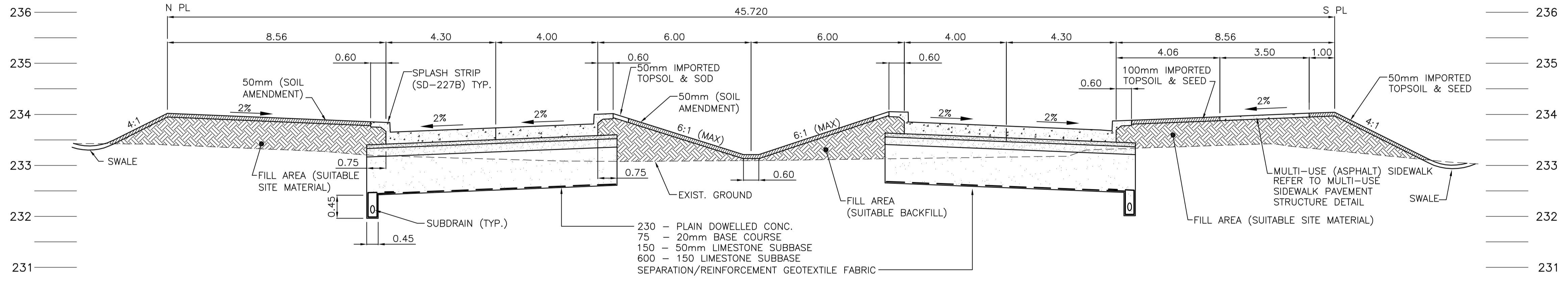


VICTOR LEWIS DRIVE SECTION @ STA 0+480
 SCALE: HOR. 1:100
 VERT. 1:50



WILKES AVENUE SECTION @ STA 0+605
 SCALE: HOR. 1:100
 VERT. 1:50

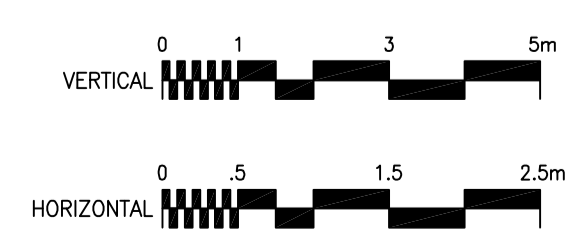
- NOTES:**
1. ALL SUB DRAINS INSTALLED AS PER CW3120 & STANDARD DETAIL SD-245.
 2. THE SEPARATION/REINFORCEMENT FABRIC SHALL BE WOVEN FABRIC AS PER CW3120.5.6. ALSO REFER TO TABLE CW 3710.5.4.2.
 3. FOR JOINT DETAILS OF PAVEMENT AT THE INTERSECTION, REFER TO JOINT DETAIL DRAWING P-3258-22 TO P-3258-25.
 4. FOR COMPLETE LANDSCAPING DETAILS AT BOULEVARDS, ISLAND AND MEDIAN LOCATIONS, REFER TO LANDSCAPING ARCHITECTURE DRAWINGS P-3258-32 TO P-3258-38.
 5. ELEVATIONS SHOWN ON TYPICAL SECTIONS ARE FOR REPRESENTATION ONLY.
 6. CONTRACTOR TO ADJUST THE GRADING OF BOULEVARDS TO ENSURE POSITIVE DRAINAGE WITH CONTRACT ADMINISTRATOR APPROVAL.
 7. CONTRACTOR TO FOLLOW CITY'S STANDARD DETAILS, WHERE APPLICABLE AND WILL ACQUIRE CONTRACT ADMINISTRATOR'S APPROVAL FOR ALL OTHER APPLICATIONS.
 8. CONTRACTOR TO CONFIRM EXISTING PAVEMENT STRUCTURE AND THICKNESS ON SITE FOR WILKES AVENUE AND VICTOR LEWIS DRIVE.



STERLING LYON PARKWAY (EAST) SECTION @ STA 2+900
 SCALE: HOR. 1:100
 VERT. 1:50

METRIC
 WHOLE NUMBERS INDICATE MILLIMETRES
 DECIMALIZED NUMBERS INDICATE METRES

WARNING
 IF POWER EQUIPMENT OR EXPLOSIVES ARE TO BE USED FOR EXCAVATION ON THIS PROJECT THE CONTRACTOR MUST:
 1) NOTIFY THE GAS COMPANY OF THE PROPOSED LOCATION OF EXCAVATION.
 2) TAKE PRECAUTION TO AVOID DAMAGE TO GAS COMPANY INSTALLATIONS.
 SEE PROVINCIAL REGULATION 140/92 FOR DETAILS



LOCATION APPROVED UNDERGROUND STRUCTURES

SUPV. U/G STRUCTURES COMMITTEE	DATE

NOTE:
 LOCATION OF UNDERGROUND STRUCTURES AS SHOWN ARE BASED ON THE BEST INFORMATION AVAILABLE BUT NO GUARANTEE IS GIVEN THAT ALL EXISTING UTILITIES ARE SHOWN OR THAT THE GIVEN LOCATIONS ARE EXACT. CONFIRMATION OF EXISTENCE AND EXACT LOCATION OF ALL SERVICES MUST BE OBTAINED FROM THE INDIVIDUAL UTILITIES BEFORE PROCEEDING WITH CONSTRUCTION.

B.M. ELEV.			

NO.	REVISIONS	DATE	BY
1	ISSUED FOR TENDER	05.03.29	GWM
0	ISSUED FOR CLIENT REVIEW	05.02.28	TAS

Stantec Consulting Ltd.
 905 Waverley Street, Winnipeg, Manitoba
 Tel 204-489-5900 Fax 204-453-9012

DESIGNED BY: TAS	CHECKED BY: TAS
DRAWN BY: TAG, JMB	APPROVED BY: GWM
HOR. SCALE: AS SHOWN	AUTHORIZED BY: R. FINGAS, P. ENG. 05.03.24
VERTICAL: AS SHOWN	R. FINGAS, P. ENG. BRIDGE PROJECTS ENGINEER

ENGINEER'S SEAL

ORIGINAL SEALED BY G.W. MOURANT P. ENG. 05.03.24

CONSULTANT DRAWING NO. I13703042-T17

THE CITY OF WINNIPEG PUBLIC WORKS DEPARTMENT ENGINEERING DIVISION

Winnipeg

KENASTON UNDERPASS STERLING LYON PARKWAY (EAST)

PAVEMENT CROSS SECTIONS

SHEET 29 OF 60
 CAD FILE DRAWING NUMBER d11-sect.dwg
 CITY DRAWING NUMBER P-3258-29

