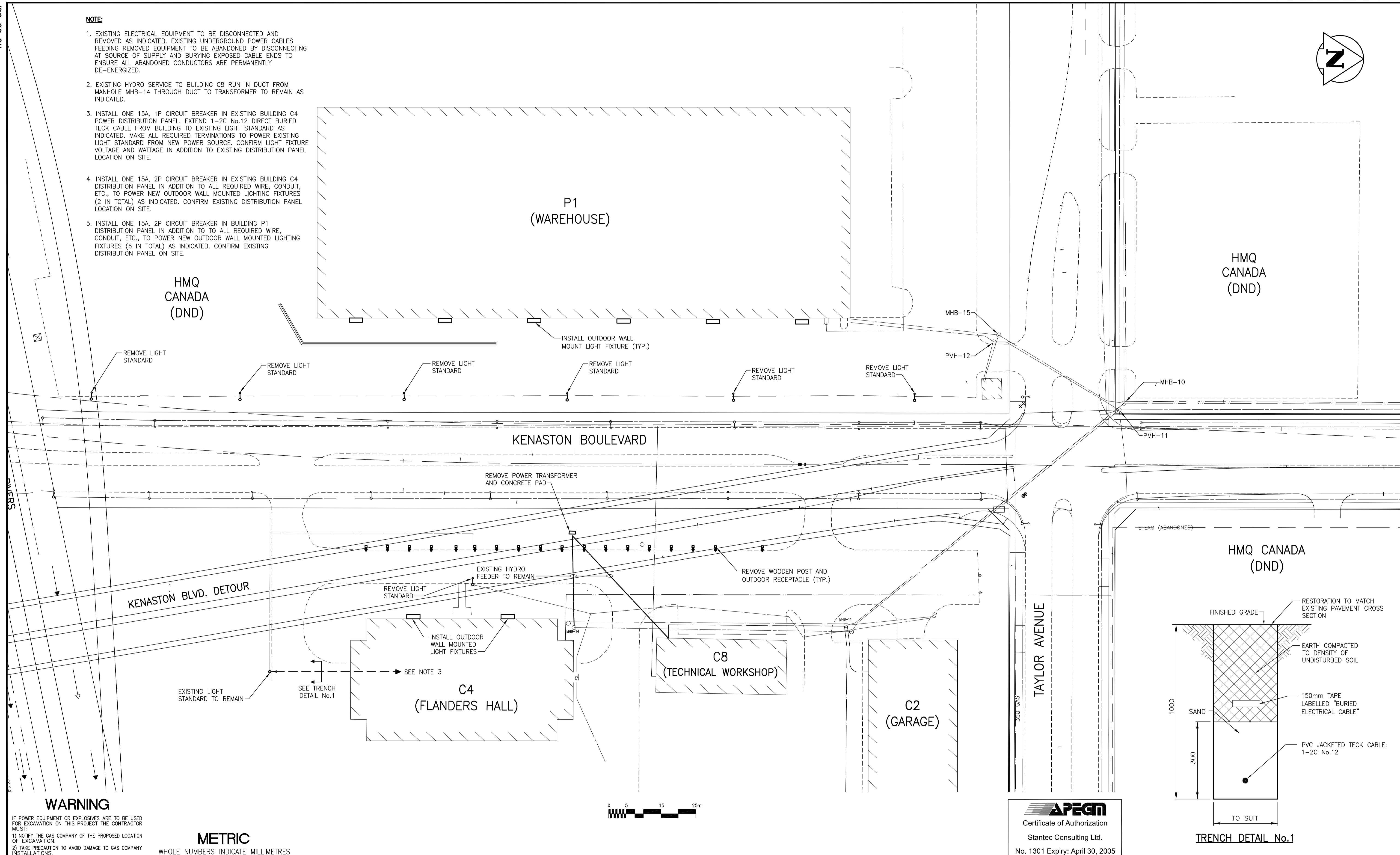
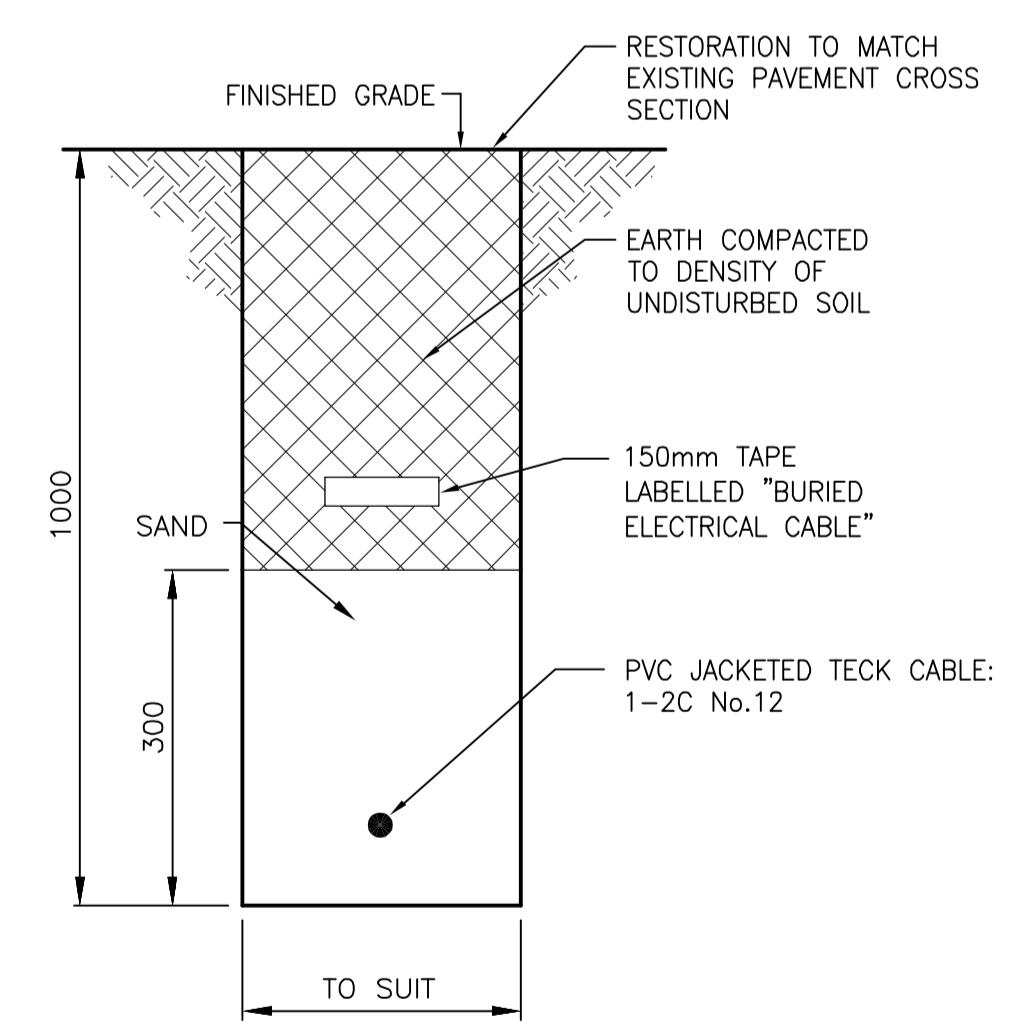


NOTE:

1. EXISTING ELECTRICAL EQUIPMENT TO BE DISCONNECTED AND REMOVED AS INDICATED. EXISTING UNDERGROUND POWER CABLES FEEDING REMOVED EQUIPMENT TO BE ABANDONED BY DISCONNECTING AT SOURCE OF SUPPLY AND BURYING EXPOSED CABLE ENDS TO ENSURE ALL ABANDONED CONDUCTORS ARE PERMANENTLY DE-ENERGIZED.
2. EXISTING HYDRO SERVICE TO BUILDING C8 RUN IN DUCT FROM MANHOLE MHB-14 THROUGH DUCT TO TRANSFORMER TO REMAIN AS INDICATED.
3. INSTALL ONE 15A, 1P CIRCUIT BREAKER IN EXISTING BUILDING C4 POWER DISTRIBUTION PANEL. EXTEND 1-2C No.12 DIRECT BURIED TECK CABLE FROM BUILDING TO EXISTING LIGHT STANDARD AS INDICATED. MAKE ALL REQUIRED TERMINATIONS TO POWER EXISTING LIGHT STANDARD FROM NEW POWER SOURCE. CONFIRM LIGHT FIXTURE VOLTAGE AND WATTAGE IN ADDITION TO EXISTING DISTRIBUTION PANEL LOCATION ON SITE.
4. INSTALL ONE 15A, 2P CIRCUIT BREAKER IN EXISTING BUILDING C4 DISTRIBUTION PANEL IN ADDITION TO ALL REQUIRED WIRE, CONDUIT, ETC., TO POWER NEW OUTDOOR WALL MOUNTED LIGHTING FIXTURES (2 IN TOTAL) AS INDICATED. CONFIRM EXISTING DISTRIBUTION PANEL LOCATION ON SITE.
5. INSTALL ONE 15A, 2P CIRCUIT BREAKER IN BUILDING P1 DISTRIBUTION PANEL IN ADDITION TO ALL REQUIRED WIRE, CONDUIT, ETC., TO POWER NEW OUTDOOR WALL MOUNTED LIGHTING FIXTURES (6 IN TOTAL) AS INDICATED. CONFIRM EXISTING DISTRIBUTION PANEL LOCATION ON SITE.



KENASTON BLVD. DETOUR



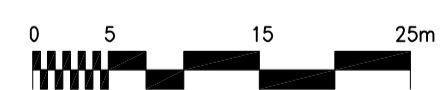
WARNING

IF POWER EQUIPMENT OR EXPLOSIVES ARE TO BE USED FOR EXCAVATION ON THIS PROJECT THE CONTRACTOR MUST:

- 1) NOTIFY THE GAS COMPANY OF THE PROPOSED LOCATION OF EXCAVATION.
- 2) TAKE PRECAUTION TO AVOID DAMAGE TO GAS COMPANY INSTALLATIONS.

METRIC

WHOLE NUMBERS INDICATE MILLIMETRES
DECIMALIZED NUMBERS INDICATE METRES



APEGM
Certificate of Authorization
Stantec Consulting Ltd.
No. 1301 Expiry: April 30, 2005

—	GAS	○	MANHOLE	●	TREE	—	
—	MTS	□	CATCH BASIN/CATCH PIT	■	SIGN	—	
—	HYDRO	△	C & G INLET WITH BOX	▲	RAIL CROSSING SIGNAL	—	
—	VIDEO	⊙	VALVE	+	CURB	—	
—	TRAFFIC SIGNALS	⊕	HYDRANT	+		—	
—	LAND DRAINAGE SEWER	⊗	ELECTRICAL OUTLET	⊗		—	
—	SANITARY/COMBINED SEWER	⊖	HYDRO POLE	⊖		—	
—	CATCHBASIN LEAD	⊕	HYDRO PEDESTAL	⊕		—	
—	WATERMAIN	⊗	SIGNAL PIT	⊗		—	
—	PLUG	⊖	LIGHT STANDARD	⊖		—	
—		⊖	TRAFFIC SIGNAL	⊖		—	
—	EXISTING	—	LEGEND - PLAN	—	EXISTING	—	LEGEND - PLAN
—	NEW	—	LEGEND - PLAN	—	NEW	—	LEGEND - PLAN

LOCATION APPROVED UNDERGROUND STRUCTURES

SUPV. U/G STRUCTURES COMMITTEE DATE

NOTE:
LOCATION OF UNDERGROUND STRUCTURES AS SHOWN ARE BASED ON THE BEST INFORMATION AVAILABLE BUT NO GUARANTEE IS GIVEN THAT ALL EXISTING UTILITIES ARE SHOWN OR THAT THE GIVEN LOCATIONS ARE EXACT. CONFIRMATION OF EXISTENCE AND EXACT LOCATION OF ALL SERVICES MUST BE OBTAINED FROM THE INDIVIDUAL UTILITIES BEFORE PROCEEDING WITH CONSTRUCTION.

B.M. ELEV.					
NO.	REVISIONS	DATE	BY	DATE	
1	ISSUED FOR TENDER	05.03.29	DWD		
0	ISSUED FOR CLIENT REVIEW	05.02.28	DWD		

Stantec Consulting Ltd.
905 Waverley Street, Winnipeg, Manitoba
Tel 204-489-5900 Fax 204-453-9012

DESIGNED BY	DWD	CHECKED BY	DWD
DRAWN BY	GKL	APPROVED BY	GWM
AUTHORIZED BY:	R. FINGAS	DATE:	05.03.24
R. FINGAS, P. ENG. BRIDGE PROJECTS ENGINEER			

ENGINEER'S SEAL

ORIGINAL SEALED BY
D.W. DOWHAN
P. ENG.
05.03.24

CONSULTANT DRAWING NO.
I13703042-E01

THE CITY OF WINNIPEG
PUBLIC WORKS DEPARTMENT
ENGINEERING DIVISION

Winnipeg

KENASTON UNDERPASS
STERLING LYON PARKWAY (EAST)

ELECTRICAL SITE SERVICES

SHEET **53** OF **60**

CAD FILE DRAWING NUMBER
and electrical dwg

CITY DRAWING NUMBER
P-3258-31