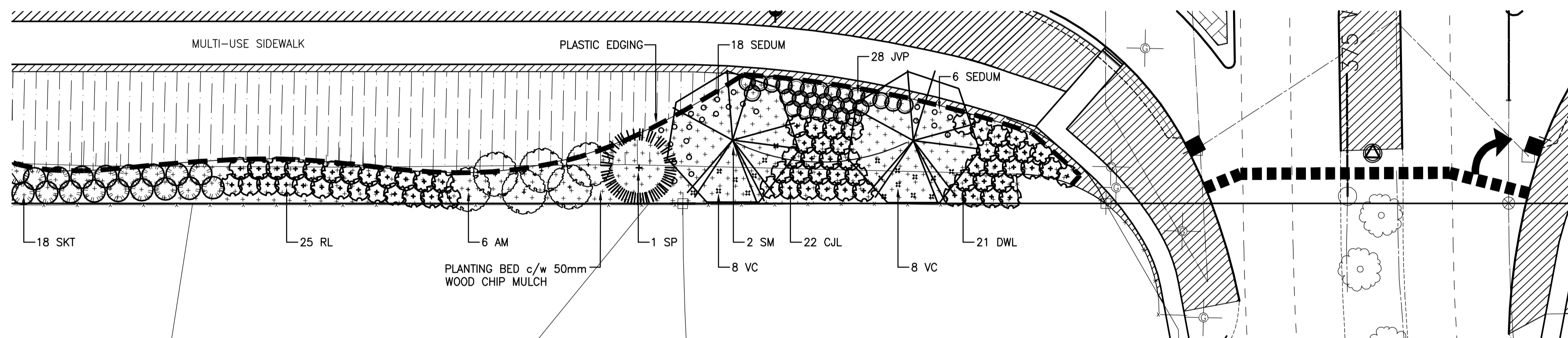
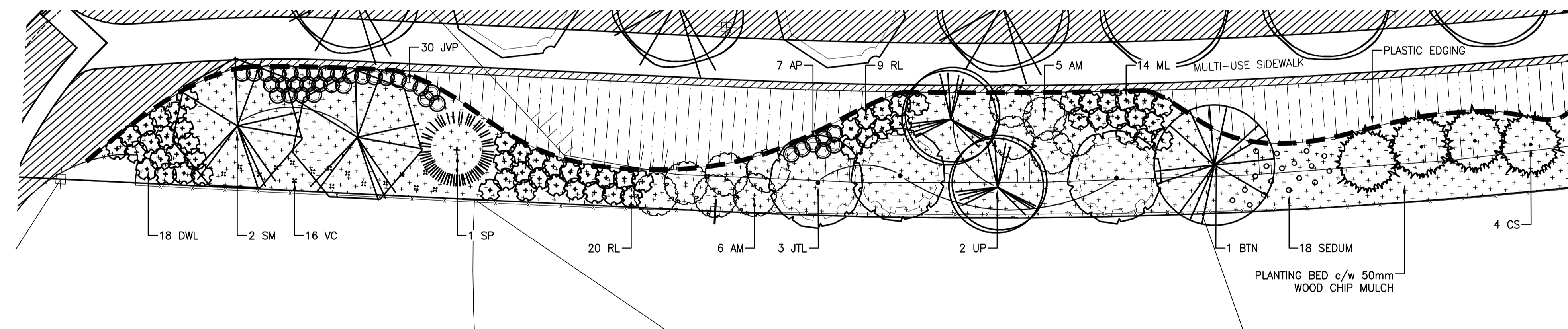
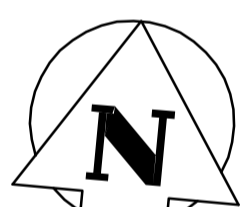


ENLARGEMENT 1



ENLARGEMENT 2



ENLARGEMENT 3

PLANT LIST (SHEET 56)

SYMBOL ABBR.	No.	COMMON NAME	BOTANICAL NAME	SIZE/HEIGHT	NOTES
<b>DECIDUOUS TREES</b>					
SM	4	Silver Maple	<i>Acer saccharinum</i>	65mm cal.	BBB/Machine
MM	1	Manitoba Maple	<i>Acer negundo</i>	50mm cal.	BBB/Machine
GA	1	Green Ash	<i>Fraxinus pennsylvanica subintegerrima</i>	65mm cal.	BBB/Machine
AE	1	American Elm	<i>Ulmus americana</i>	65mm cal.	BBB/Machine
BNT	1	Butternut	<i>Juglans cinerea</i>	50mm cal.	BBB/Machine
PC	1	Pincherry	<i>Prunus pennsylvanica</i>	40mm cal.	BBB/Machine
UP	2	Ussurian Pear	<i>Pyrus spp. 'Ussurian'</i>	40mm cal.	BBB/Machine
BO	4	Bur Oak	<i>Quercus macrocarpa</i>	40mm cal.	BBB/Machine
JTL	3	Japanese Tree Lilac	<i>Syringa reticulata</i>	50mm cal.	BBB/Machine
<b>CONIFEROUS TREES</b>					
SP	2	Scots Pine	<i>Pinus sylvestris</i>	2.0m ht.	BBB/Machine
CS	4	Colorado Spruce	<i>Picea pungens</i>	2.0m ht.	BBB/Machine
<b>DECIDUOUS SHRUBS, LARGE OR TREE-LIKE SHRUBS</b>					
SBB	38	Silver Buffaloberry	<i>Shepherdia argentea</i>	0.75m ht.	BBB/Machine
AM	17	Amur Maple	<i>Acer ginnala</i>	0.75m ht.	BBB/Container
HC	18	Highbush Cranberry	<i>Viburnum trilobum</i>	0.60m ht.	BBB/Container
SKT	22	Saskatoon	<i>Amelanchier alnifolia</i>	0.75m ht.	BBB/Container
DWL	39	Donald Wyman Lilac	<i>Syringa prestoniae 'Donald Wyman'</i>	0.75m ht.	BBB/Container
RL	54	Royalty Lilac	<i>Syringa prestoniae 'Royalty'</i>	0.75m ht.	BBB/Container
CJL	22	Charles Joli Lilac	<i>Syringa vulgaris 'Charles Joli'</i>	0.75m ht.	BBB/Container
<b>SHRUBS, SMALL AND MEDIUM</b>					
ML	14	Meyer Lilac	<i>Syringa meyeri</i>	0.60m ht.	BBB/Container
AP	7	Abbotswood Potentilla	<i>Potentilla fruticosa 'Abbotswood'</i>	0.50m ht.	BBB/Container
CTP	16	Coronation Triumph Potentilla	<i>Potentilla fruticosa 'Coronation Triumph'</i>	0.50m ht.	BBB/Container
JVP	63	Jackman's Variety Potentilla	<i>Potentilla fruticosa 'Jackman's Variety'</i>	0.50m ht.	BBB/Container
WSB	86	Western Snowberry	<i>Symphoricarpos albus</i>	0.60m ht.	BBB/Container
<b>CLIMBERS</b>					
VC	32	Virginia Creeper	<i>Parthenocissus quinquefolia</i>	2 yr.	BBB/Container
<b>PERENNIALS</b>					
	42	Sedum	<i>Sedum spp.</i>		yellow/low growing

SPECIFICATION: All plant material to be supplied and installed in accordance with the latest edition of Landscape Canada's Metric Guide Specifications for Nursery Stock.

NOTE: SEE PLANTING DETAILS, SHEET P-3258-38

METRIC

WHOLE NUMBERS INDICATE MILLIMETRES  
DECIMALIZED NUMBERS INDICATE METRES

WARNING

IF POWER EQUIPMENT OR EXPLOSIVES ARE TO BE USED FOR EXCAVATION ON THIS PROJECT THE CONTRACTOR MUST:  
1) NOTIFY THE GAS COMPANY OF THE PROPOSED LOCATION OF EXCAVATION.  
2) TAKE PRECAUTION TO AVOID DAMAGE TO GAS COMPANY INSTALLATIONS.  
SEE PROVINCIAL REGULATION 140/92 FOR DETAILS

—	GAS	○	MANHOLE	●	CONCRETE PAVEMENT
—	MTS	□	CATCH BASIN/CATCH PIT	■	ASPHALT PAVEMENT
—	HYDRO	△	C & G INLET WITH BOX	▲	CONC. SIDEWALK/MED. SLAB
—	VIDEON	⊙	TREE	▨	PAVING STONE
—	TRAFFIC SIGNALS	⊕	TEST HOLE	▩	TOPSOIL & SOD
—	LAND DRAINAGE SEWER	—	PROPERTY LINE	---	GRAVEL
—	SANITARY/COMBINED SEWER	⊕	SURVEY BAR	---	RAMP CURB
—	CATCHBASIN LEAD	⊕	GEODETIC MONUMENT	---	REMOVAL
—	WATERMAIN	—	FENCE	---	
—	SUBDRAIN	—	B.O. CURB/E.O. PAVEMENT	---	
—	DITCH	←	ELEVATION	---	
—	LEGEND - PLAN		LEGEND - PLAN		LEGEND - PLAN

LOCATION APPROVED UNDERGROUND STRUCTURES

SUPV. U/G STRUCTURES COMMITTEE DATE

NOTE:  
LOCATION OF UNDERGROUND STRUCTURES AS SHOWN ARE BASED ON THE BEST INFORMATION AVAILABLE BUT NO GUARANTEE IS GIVEN THAT ALL EXISTING UTILITIES ARE SHOWN OR THAT THE GIVEN LOCATIONS ARE EXACT. CONFIRMATION OF EXISTENCE AND EXACT LOCATION OF ALL SERVICES MUST BE OBTAINED FROM THE INDIVIDUAL UTILITIES BEFORE PROCEEDING WITH CONSTRUCTION.

B.M. - ELEV. -					
2	REVISED FOR TENDER	05/03/30	LJV		
1	ISSUED FOR TENDER	05/03/29	LJV		
A	ISSUED FOR CLIENT REVIEW	05/02/28	LJV		
NO.	REVISIONS	DATE	BY	DATE	05/03/21

**uma**  
An AECOM Company  
2005 UMA ENGINEERING LTD. ALL RIGHTS RESERVED.

DESIGNED BY: DH  
CHECKED BY: DH

DRAWN BY: LJV  
APPROVED BY:

HOR. SCALE: 1:250  
VERTICAL: 05/03/24

Randy Fingas  
R. FINGAS P. ENG.  
BRIDGE PROJECTS ENGINEER

ENGINEER'S SEAL

Original Signed By:  
Don Hester  
Mar 23/05

CONSULTANT DRAWING NO.  
I13703042-L03

**THE CITY OF WINNIPEG**  
PUBLIC WORKS DEPARTMENT  
ENGINEERING DIVISION

**Winnipeg**

**KENASTON UNDERPASS PROJECT**  
STERLING LYON PARKWAY (EAST)

PLANTING BED ENLARGEMENTS  
STA. 3+025 TO STA. 3+625

SHEET 56 OF 60  
CAD FILE DRAWING NUMBER 02-L-1003\_RX  
CITY DRAWING NUMBER P-3258-34