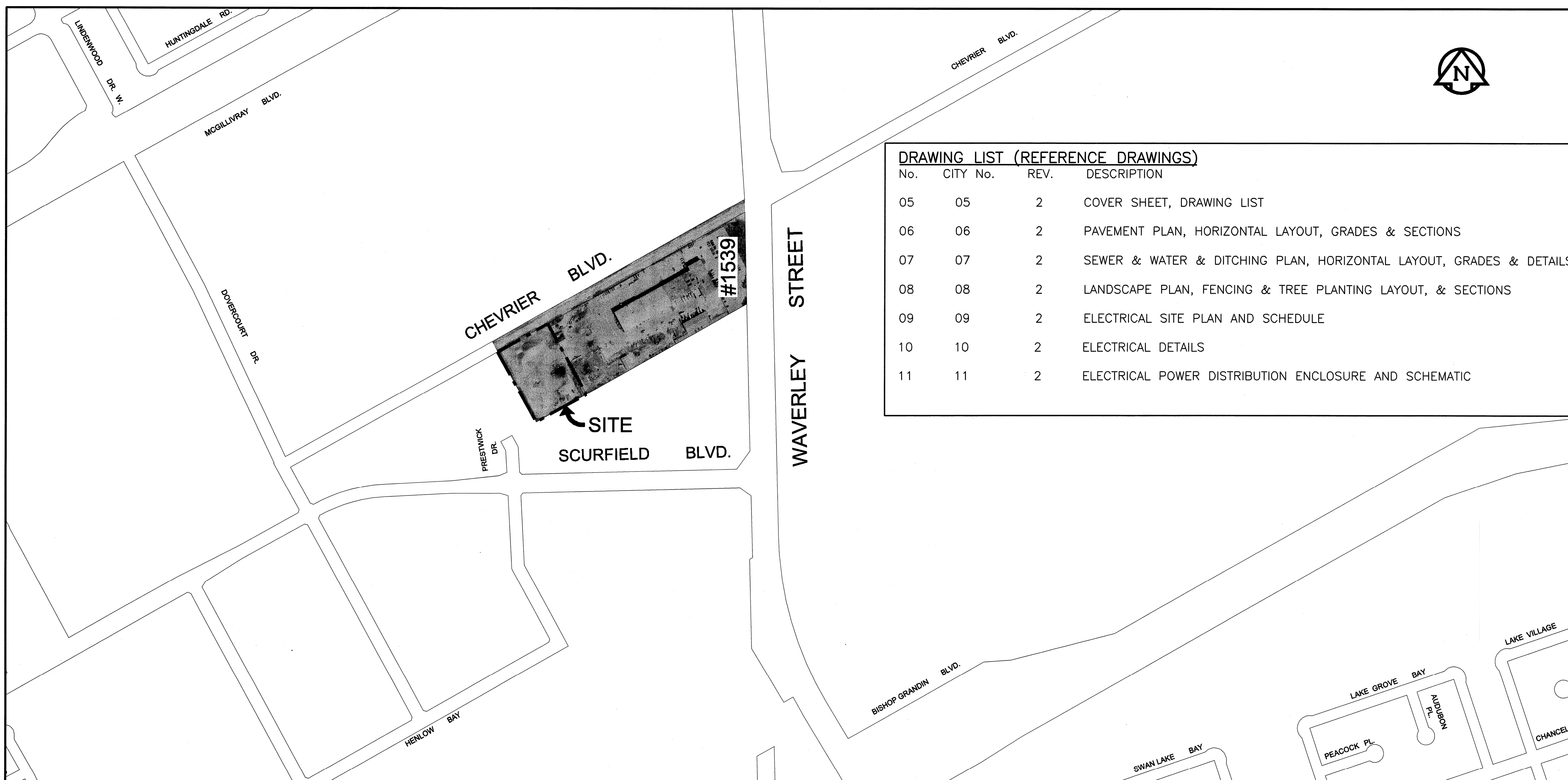




**THE CITY OF WINNIPEG  
PUBLIC WORKS DEPARTMENT  
ENGINEERING DIVISION**

**SAND and SALT STORAGE FACILITY  
at 1539 WAVERLEY STREET  
YARD WORKS  
BID OPPORTUNITY No. 9-2005**



DRAWING LIST (REFERENCE DRAWINGS)			
No.	CITY No.	REV.	DESCRIPTION
05	05	2	COVER SHEET, DRAWING LIST
06	06	2	PAVEMENT PLAN, HORIZONTAL LAYOUT, GRADES & SECTIONS
07	07	2	SEWER & WATER & DITCHING PLAN, HORIZONTAL LAYOUT, GRADES & DETAILS
08	08	2	LANDSCAPE PLAN, FENCING & TREE PLANTING LAYOUT, & SECTIONS
09	09	2	ELECTRICAL SITE PLAN AND SCHEDULE
10	10	2	ELECTRICAL DETAILS
11	11	2	ELECTRICAL POWER DISTRIBUTION ENCLOSURE AND SCHEMATIC

AutoCAD 15.05 P:\0265\366-00\ALD\Sand Salt Facility\1539 Waverley\dwg\Sand Salt Facility\_Cover.dwg 2004-04-21 2:47pm DID



**UMA Engineering Ltd.**

• Consulting • Engineering • Construction • Management Services

RELEASED FOR CONSTRUCTION BY:

STREETS PROJECT ENGINEER

DATE

**NOT IN CONTRACT  
FOR REFERENCE  
PURPOSES ONLY**



COVER SHEET  
AND LOCATION PLAN  
CITY DRAWING NUMBER  
05  
CONSULTANT NO.  
41-0103-0265-366-00