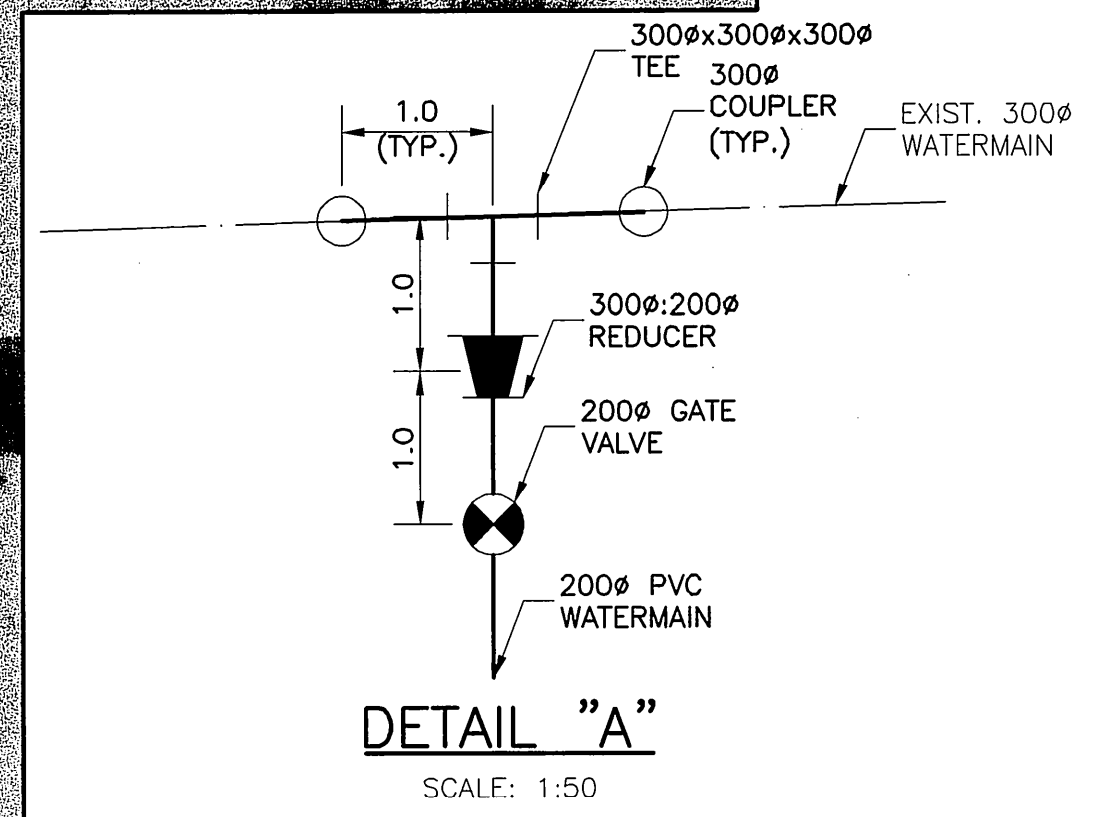


SEWERMAINS COORDINATE LAYOUT

STRUCTURE NUMBER	DESCRIPTION	NORTHING	EASTING	RIM ELEVATION	INVERT NORTH	INVERT WEST	INVERT SOUTH	INVERT EAST	BOTTOM ELEVATION
COUPLING	300# TRANS.	1136.559	1008.816		300# 30.500		300# 30.500		
MH-2L	1200#	1116.547	1014.332	33.000	300# 30.780		300# 30.780	250#/SE 30.830	30.780
CB-1L	1200 DP.	1111.935	1019.192	32.700	250#/NW 31.200				30.600
MH-3L	1200#	1065.740	1007.740	32.700	300# 31.090		250# 31.140		31.090
CB-2L	1200 DP.	1003.700	1003.994	32.700	250# 31.500				30.900
TEE/RISER	300x300x250#	1139.526	1072.107			300# 26.740	250# 26.740	300# 26.740	
MH-1W	1500#	1085.807	1072.156	33.750	250# 31.530		250# 31.530		31.530
CB-1W	1800 DP.	1073.951	1059.235	33.750	250#/NE 31.950	200# 32.000	200# 32.000		31.350
CB-2W	1200 DP.	1073.951	1031.235	33.750				200# 32.550	31.950
CB-3W	1200 DP.	1023.201	1045.235	33.750	200# 32.550				31.950



AYOUT

NG	EASTING
9	1071.104
9	1071.105
7	1071.105
7	1071.140
7	1071.140
7	1071.142

NOT IN CONTRACT FOR REFERENCE PURPOSES ONLY

BID OPPORTUNITY No. 9-2005

**APEGM**  
Certificate of Authorization  
UMA Engineering Ltd.  
No. 256 Expiry: April 30, 2005

PLOT SCALE = 1:0.50  
AutoCAD 15.05 P:\0265\366-00\ALD\Sand Salt Facility\1539 Waverley.dwg Sand Salt Facility Site Plan.dwg 2004-04-21 08:34pm DID

EXISTING	LEGEND - PLAN	PROPOSED	EXISTING	LEGEND - PLAN	PROPOSED	EXISTING	LEGEND - PLAN	PROPOSED
---	GAS	○	○	MANHOLE	●	---	CONCRETE	---
---	MTS	□	□	CATCH BASIN/CATCH PIT	■	---	ASPHALT	---
---	HYDRO	△	△	C & G INLET W/BOX	▲	---	CONCRETE SIDEWALK	---
---	VIDEON	⊙	⊙	TREE	⊗	---	PAVING STONE	---
---	TRAFFIC SIGNALS	⊕-12	⊕-12	TEST HOLE	⊕	---	TOPSOIL & SOD	---
---	LAND DRAINAGE SEWER	---	---	PROPERTY LINE	---	---	BASE COURSE/GRAVEL	---
---	SANITARY/COMBINED SEWER	---	---	SURVEY BAR	---	---	RAMP CURB	---
---	CATCHBASIN LEAD	---	---	FENCE	-X-X-	---		---
---	WATERMAIN	---	---	BACK OF CURB/PAVEMENT ELEVATION	(33.100)	---		---
---	SUBDRAIN	---	---			---		---
---	DITCH	---	---			---		---

B.M. 75-004  
ELEV. 233.501

S.W. cor. Waverley St. & Chevrier Blvd.  
Dial. #1 N. conc. found. #1539 Waverley  
1.0m W. & 0.9m below brick of  
N. E. corner of Building.

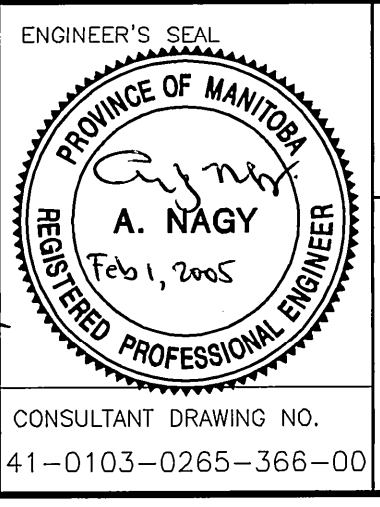
NO.	REVISIONS	DATE	BY
2	RE-ISSUED FOR BID	05Feb01	DML
1	ISSUED FOR CONSTRUCTION	04Apr23	DID
0	ISSUED FOR REVIEW	04Apr02	DID

**UMA** **UMA Engineering Ltd.**  
• Consulting • Engineering • Construction • Management Services

DESIGNED BY: JGK  
DRAWN BY: DID  
CHECKED BY: *[Signature]*  
APPROVED BY: *[Signature]*

HOR. SCALE: 1:500  
VERTICAL: N/A  
YY/MM/DD: 04/02/12

RELEASED FOR CONSTRUCTION  
DATE



**THE CITY OF WINNIPEG**  
PUBLIC WORKS DEPARTMENT  
ENGINEERING DIVISION

**Winnipeg**

SAND and SALT STORAGE FACILITY  
at 1539 WAVERLEY STREET  
YARD WORKS

SEWER, WATER & DITCHING PLAN  
HORIZONTAL LAYOUT, GRADES & DETAILS

CITY DRAWING NUMBER 07  
SHEET 07 OF 11  
REV 07 2

CONSULTANT DRAWING NO. 41-0103-0265-366-00