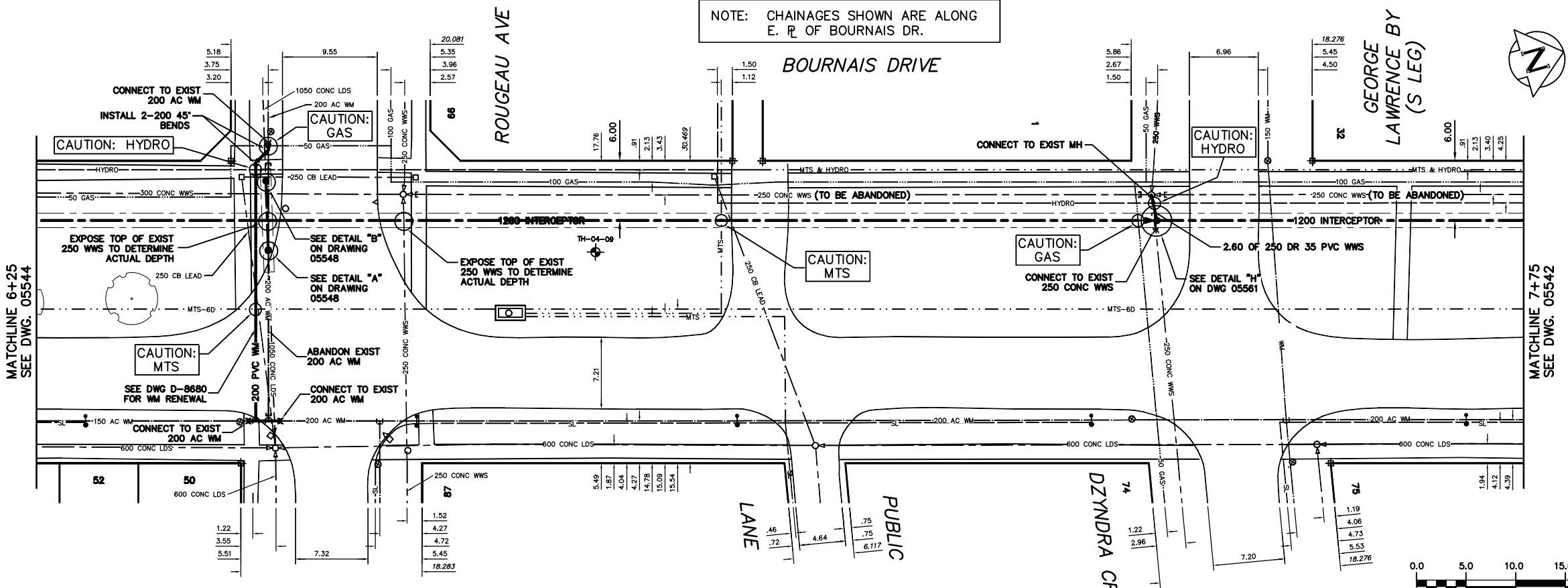


NOTE: CHAINAGES SHOWN ARE ALONG E. R. OF BOURNAIS DR.

SEWER SERVICE INFORMATION			
ADDRESS	SIZE	R. DIST.	JUNCTION TIE
50 BOURNAIS DR			
COMMERCIAL			
52 BOURNAIS DR			
RESIDENTIAL			
87 ROUGEAU AVE			
RESIDENTIAL			SERV. OFF ROUGEAU
99 ROUGEAU AVE			
RESIDENTIAL			
74 DZYNDRA CR			
RESIDENTIAL			SERV. OFF DZYNDRA
75 DZYNDRA CR			
RESIDENTIAL			SERV. OFF DZYNDRA

FOR CONSTRUCTION NOTES SEE DRAWING D-8680



METRIC
WHOLE NUMBERS INDICATE MILLIMETRES
DECIMALIZED NUMBERS INDICATE METRES

WARNING
IF POWER EQUIPMENT OR EXPLOSIVES ARE TO BE USED FOR EXCAVATION ON THIS PROJECT THE CONTRACTOR
LOCATION OF EXCAVATION:
1) NOTIFY THE GAS COMPANY OF THE PROPOSED LOCATION OF EXCAVATION.
2) TAKE PRECAUTION TO AVOID DAMAGE TO GAS COMPANY INSTALLATIONS.
SEE PROVINCIAL REGULATION 210/72 FOR DETAILS

200 WM	WATERMAIN	200 WM	SL, HYDRO	150 WM	WATERMAIN	150 WM	LOCATION APPROVED	B.M. ELEV.	FIELD BOOK #
⊕	HYDRANT	⊕	MTS	⊕	HYDRANT	⊕	UNDERGROUND STRUCTURES		
⊙	VALVE	⊙	TRAFFIC SIGNALS	⊙	VALVE	⊙			
525 LDS	LAND DRAINAGE SEWER	525 LDS	GAS	300 LDS	LAND DRAINAGE SEWER	300 LDS			
375 WWS	WASTEWATER SEWER	375 WWS	SURVEY BAR	250 WWS	WASTEWATER SEWER	250 WWS			
○	MANHOLE	○	FENCE	⊕	PROFILE	⊕			
□	CATCH BASIN	□	POLE - HYDRO, MTS	⊕	GROUND ABOVE PIPE	⊕			
▽	CURB INLET	▽	CURB STOP	⊕	⊕ DITCH (NORTH & WEST)	⊕			
⊕	JUNCTIONS	⊕	GUY ANCHOR	⊕	⊕ DITCH (SOUTH & EAST)	⊕			
⊕	CULVERT	⊕	LIGHT STANDARD						
⊕	ANODE	⊕	TREE						
EXISTING	LEGEND-PLAN	PROPOSED	EXISTING	LEGEND-PLAN	PROPOSED	EXISTING	LEGEND-PROFILE	PROPOSED	

CITY OF WINNIPEG
WATER AND WASTE
ENGINEERING DIVISION

ENGINEER'S SEAL
ORIGINAL SIGNED
BY K.R. ZUREK
05/03/31

THE CITY OF WINNIPEG
WATER AND WASTE DEPARTMENT
NORTHEAST INTERCEPTOR
STAGE VII
BOURNAIS DRIVE
44 m S OF SR GEORGE LAWRENCE BAY
TO 20 m S OF SR ROUGEAU AVENUE
SHEET 11 OF 18
CITY DRAWING NUMBER
05544

DESIGNED BY SC
CHECKED BY TW
DRAWN BY CJH
APPROVED BY KZ
HOR. SCALE 1:250
VERTICAL 1:50
RELEASED FOR CONSTRUCTION
DATE 2005 03 31

BID OPPORTUNITY: 93-2005
PLOT DATE: 2005 04 12
FILENAME: 05533_to_05548_05561_D-8680.dwg