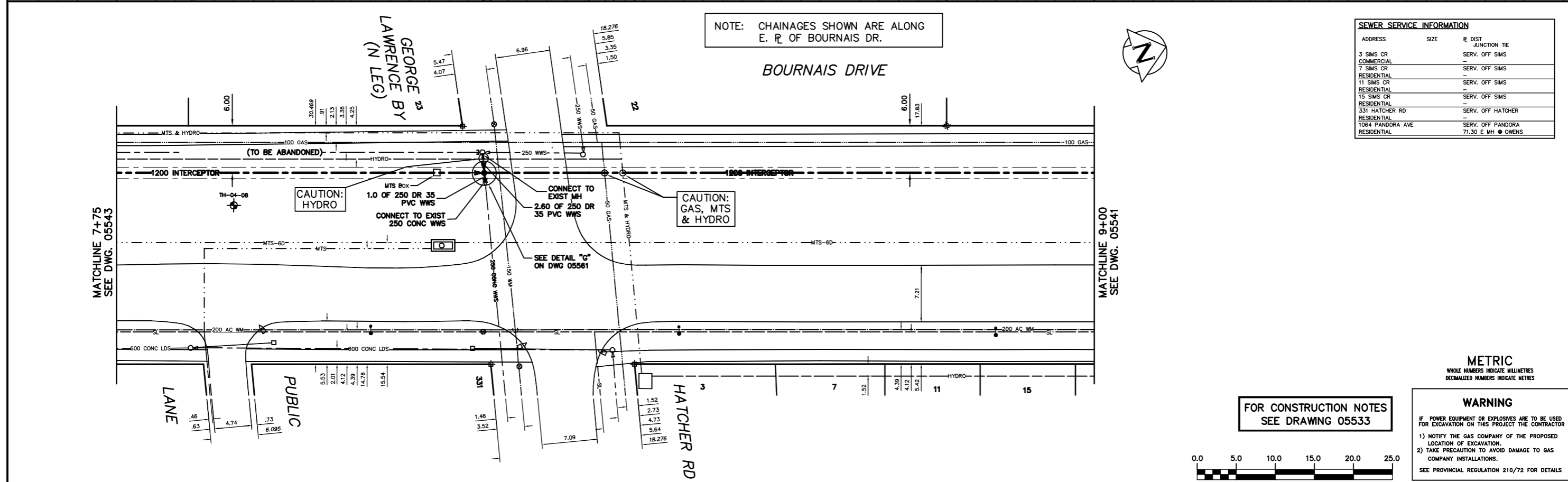


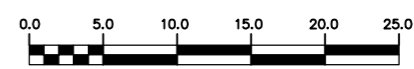
NOTE: CHAINAGES SHOWN ARE ALONG E. R. OF BOURNAIS DR.

SEWER SERVICE INFORMATION			
ADDRESS	SIZE	R. DIST.	JUNCTION TIE
3 SIMS CR	COMMERCIAL		SERV. OFF SIMS
7 SIMS CR	RESIDENTIAL		SERV. OFF SIMS
11 SIMS CR	RESIDENTIAL		SERV. OFF SIMS
15 SIMS CR	RESIDENTIAL		SERV. OFF SIMS
331 HATCHER RD	RESIDENTIAL		SERV. OFF HATCHER
1064 PANDORA AVE	RESIDENTIAL		SERV. OFF PANDORA
		71.30 E MH	OWENS



FOR CONSTRUCTION NOTES SEE DRAWING 05533

WARNING
 IF POWER EQUIPMENT OR EXPLOSIVES ARE TO BE USED FOR EXCAVATION ON THIS PROJECT THE CONTRACTOR
 1) NOTIFY THE GAS COMPANY OF THE PROPOSED LOCATION OF EXCAVATION.
 2) TAKE PRECAUTION TO AVOID DAMAGE TO GAS COMPANY INSTALLATIONS.
 SEE PROVINCIAL REGULATION 210/72 FOR DETAILS



200 WM	WATERMAIN	200 WM	SL, HYDRO	150 WM	WATERMAIN	150 WM
⊕	HYDRANT	⊕	MTS	⊕	HYDRANT	⊕
⊙	VALVE	⊙	TRAFFIC SIGNALS	⊙	VALVE	⊙
525 LDS	LAND DRAINAGE SEWER	525 LDS	GAS	300 LDS	LAND DRAINAGE SEWER	300 LDS
375 WWS	WASTEWATER SEWER	375 WWS	SURVEY BAR	250 WWS	WASTEWATER SEWER	250 WWS
○	MANHOLE	○	FENCE	⊕	PROFILE	⊕
□	CATCH BASIN	□	POLE - HYDRO, MTS	⊕	GROUND ABOVE PIPE	⊕
▽	CURB INLET	▽	CURB STOP	⊕	⊕ DITCH (NORTH & WEST)	⊕
⊕	JUNCTIONS	⊕	GUY ANCHOR	⊕	⊕ DITCH (SOUTH & EAST)	⊕
⊕	CULVERT	⊕	LIGHT STANDARD			
⊕	ANODE	⊕	TREE			
EXISTING	LEGEND-PLAN	PROPOSED	EXISTING	LEGEND-PLAN	PROPOSED	EXISTING
				LEGEND-PROFILE	PROPOSED	

LOCATION APPROVED UNDERGROUND STRUCTURES	
SUPV. U/G STRUCTURES COMMITTEE	DATE
NOTE: LOCATION OF UNDERGROUND STRUCTURES AS SHOWN ARE BASED ON THE BEST INFORMATION AVAILABLE BUT NO GUARANTEE IS GIVEN THAT ALL EXISTING UTILITIES ARE SHOWN OR THAT THE GIVEN LOCATIONS ARE EXACT. CONFIRMATION OF EXISTENCE AND EXACT LOCATION OF ALL SERVICES MUST BE OBTAINED FROM THE INDIVIDUAL UTILITIES BEFORE PROCEEDING WITH CONSTRUCTION.	
B.M. ELEV.	FIELD BOOK #:
POSTED TO LBIS	
NO. REVISIONS	DATE BY

CITY OF WINNIPEG WATER AND WASTE ENGINEERING DIVISION

DESIGNED BY	SC	CHECKED BY	TW
DRAWN BY	CJH	APPROVED BY	KZ
HOR. SCALE	1:250	RELEASED FOR CONSTRUCTION	
VERTICAL	1:50		
DATE	2005 03 31	DATE	

ENGINEER'S SEAL
 ORIGINAL SIGNED BY K.R. ZUREK 05/03/31
 BID OPPORTUNITY: 93-2005
 PLOT DATE: 2005 03 31

THE CITY OF WINNIPEG WATER AND WASTE DEPARTMENT

NORTHEAST INTERCEPTOR
 STAGE VII
 BOURNAIS DRIVE
 38 m S OF SP PANDORA AVENUE TO
 44 m S OF SP GEORGE LAWRENCE BAY

SHEET 10 OF 18
 CITY DRAWING NUMBER 05542