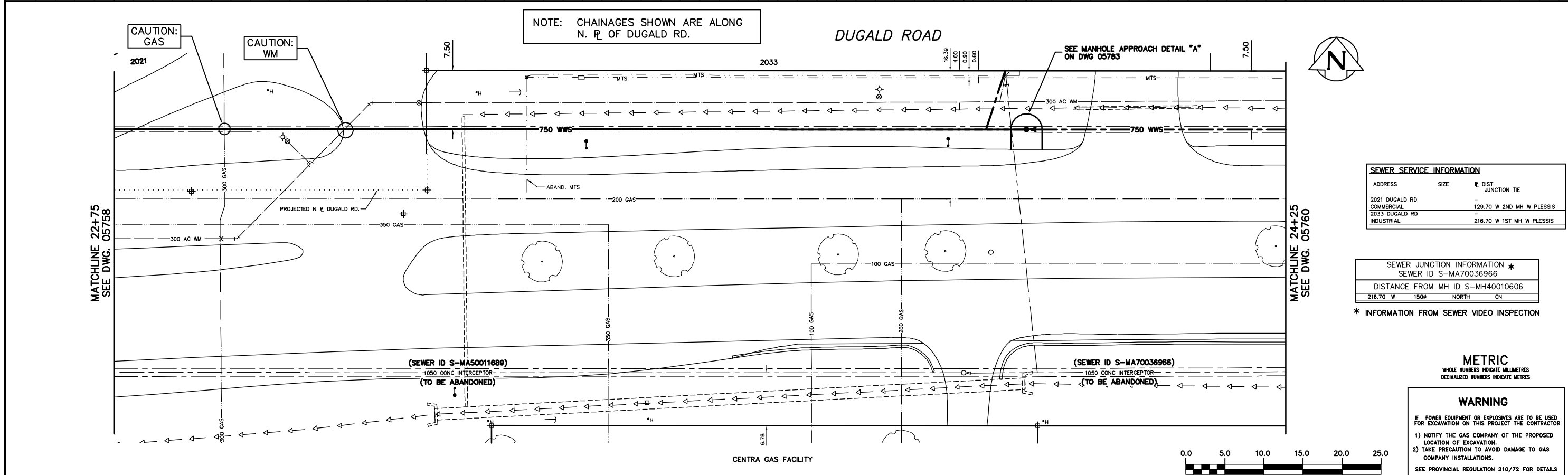


FOR CONSTRUCTION NOTES
SEE DRAWING 05761

NOTE: CHAINAGES SHOWN ARE ALONG
N. R. OF DUGALD RD.

DUGALD ROAD



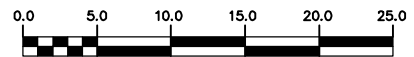
SEWER SERVICE INFORMATION			
ADDRESS	SIZE	R DIST	JUNCTION TIE
2021 DUGALD RD	-	-	-
COMMERCIAL	-	129.70 W 2ND MH W PLESSIS	-
2033 DUGALD RD	-	-	-
INDUSTRIAL	-	216.70 W 1ST MH W PLESSIS	-

SEWER JUNCTION INFORMATION *			
SEWER ID	SIZE	NORTH	ON
S-MA70036966	150	216.70 W	150
S-MA50011689	1050	129.70 W	2ND MH W PLESSIS

* INFORMATION FROM SEWER VIDEO INSPECTION

METRIC
WHOLE NUMBERS INDICATE MILLIMETRES
DECIMALIZED NUMBERS INDICATE METRES

WARNING
IF POWER EQUIPMENT OR EXPLOSIVES ARE TO BE USED FOR EXCAVATION ON THIS PROJECT THE CONTRACTOR
1) NOTIFY THE GAS COMPANY OF THE PROPOSED LOCATION OF EXCAVATION.
2) TAKE PRECAUTION TO AVOID DAMAGE TO GAS COMPANY INSTALLATIONS.
SEE PROVINCIAL REGULATION 210/72 FOR DETAILS



200 WM	WATERMAIN	200 WM	SL, HYDRO	150 WM	WATERMAIN	150 WM
⊕	HYDRANT	⊕	MTS	⊕	HYDRANT	⊕
⊙	VALVE	⊙	TRAFFIC SIGNALS	⊙	VALVE	⊙
525 LDS	LAND DRAINAGE SEWER	525 LDS	GAS	50 GAS	300 LDS	LAND DRAINAGE SEWER
375 WWS	WASTEWATER SEWER	375 WWS	SURVEY BAR	250 WWS	250 WWS	WASTEWATER SEWER
○	MANHOLE	●	FENCE	⊕	⊕	PROFILE
□	CATCH BASIN	■	POLE - HYDRO, MTS	⊕	⊕	GROUND ABOVE PIPE
▽	CURB INLET	▽	CURB STOP	⊕	⊕	⊕ DITCH (NORTH & WEST)
⊕	JUNCTIONS	⊕	GUY ANCHOR	⊕	⊕	⊕ DITCH (SOUTH & EAST)
⊕	CULVERT	⊕	LIGHT STANDARD	⊕	⊕	⊕ GUTTER (NORTH & WEST)
⊕	ANODE	⊕	TREE	⊕	⊕	⊕ GUTTER (SOUTH & EAST)
EXISTING	LEGEND-PLAN	PROPOSED	EXISTING	LEGEND-PLAN	PROPOSED	EXISTING
EXISTING	LEGEND-PROFILE	PROPOSED	EXISTING	LEGEND-PROFILE	PROPOSED	EXISTING

LOCATION APPROVED		B.M. ELEV.	FIELD BOOK #
UNDERGROUND STRUCTURES			
SUPV. U/G STRUCTURES COMMITTEE	DATE		
NOTE: LOCATION OF UNDERGROUND STRUCTURES AS SHOWN ARE BASED ON THE BEST INFORMATION AVAILABLE BUT NO GUARANTEE IS GIVEN THAT ALL EXISTING UTILITIES ARE SHOWN OR THAT THE GIVEN LOCATIONS ARE EXACT. CONFIRMATION OF EXISTENCE AND EXACT LOCATION OF ALL SERVICES MUST BE OBTAINED FROM THE INDIVIDUAL UTILITIES BEFORE PROCEEDING WITH CONSTRUCTION.			
NO.	REVISIONS	DATE	BY

CITY OF WINNIPEG
WATER AND WASTE
ENGINEERING DIVISION

DESIGNED BY: SC
CHECKED BY: TW/KZ
DRAWN BY: CJH
APPROVED BY: KZ
HOR. SCALE: 1:250
VERTICAL: 1:50
DATE: 2006 02 16

ENGINEER'S SEAL
ORIGINAL SIGNED
BY S.R.J.
COURNOYER
06/02/16

THE CITY OF WINNIPEG
WATER AND WASTE DEPARTMENT

DUGALD SECONDARY
SEWER REPLACEMENT
DUGALD ROAD
325 W OF W P PLESSIS ROAD TO
175 W OF W P PLESSIS ROAD

SHEET 8 OF 24
CITY DRAWING NUMBER
05759