

- CONSTRUCTION NOTES:
1. ALL PIPE SHALL HAVE CLASS B - TYPE 2 BEDDING
 2. INSTALL SEWER BY TRENCHLESS METHODS.
 3. CONFIRM THE LOCATION OF ALL SEWER SERVICES.
 4. BACKFILL UNDER PAVEMENT, IN SIDEWALKS, & WITHIN 1.0 OF PAVEMENT TO BE CLASS 3.
 5. BACKFILL IN BOULEVARD TO BE CLASS 5.
 6. RENEW SEWER SERVICES TO R.
 7. INSTALL SEWER SERVICE RISERS TO ELEVATION WHERE MINIMUM SLOPE OF 1% IS MAINTAINED FOR ALL SERVICES.

NOTE: CHAINAGES SHOWN ARE ALONG S. R. OF DUGALD RD.

SEWER SERVICE INFORMATION		
ADDRESS	SIZE	R DIST JUNCTION TIE
1050 PLESSIS RD	150	18.44 E OF WL
RESIDENTIAL	300	48.70 W MH AT PLESSIS

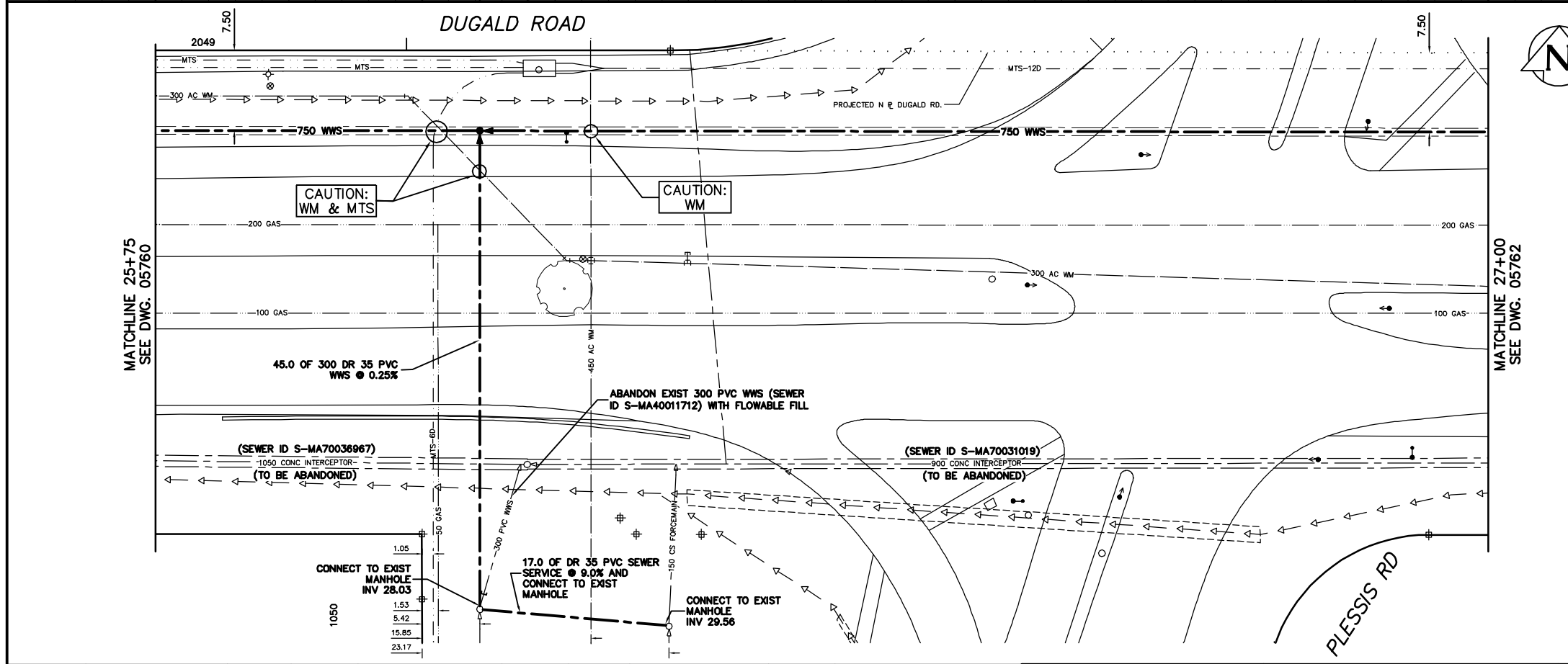
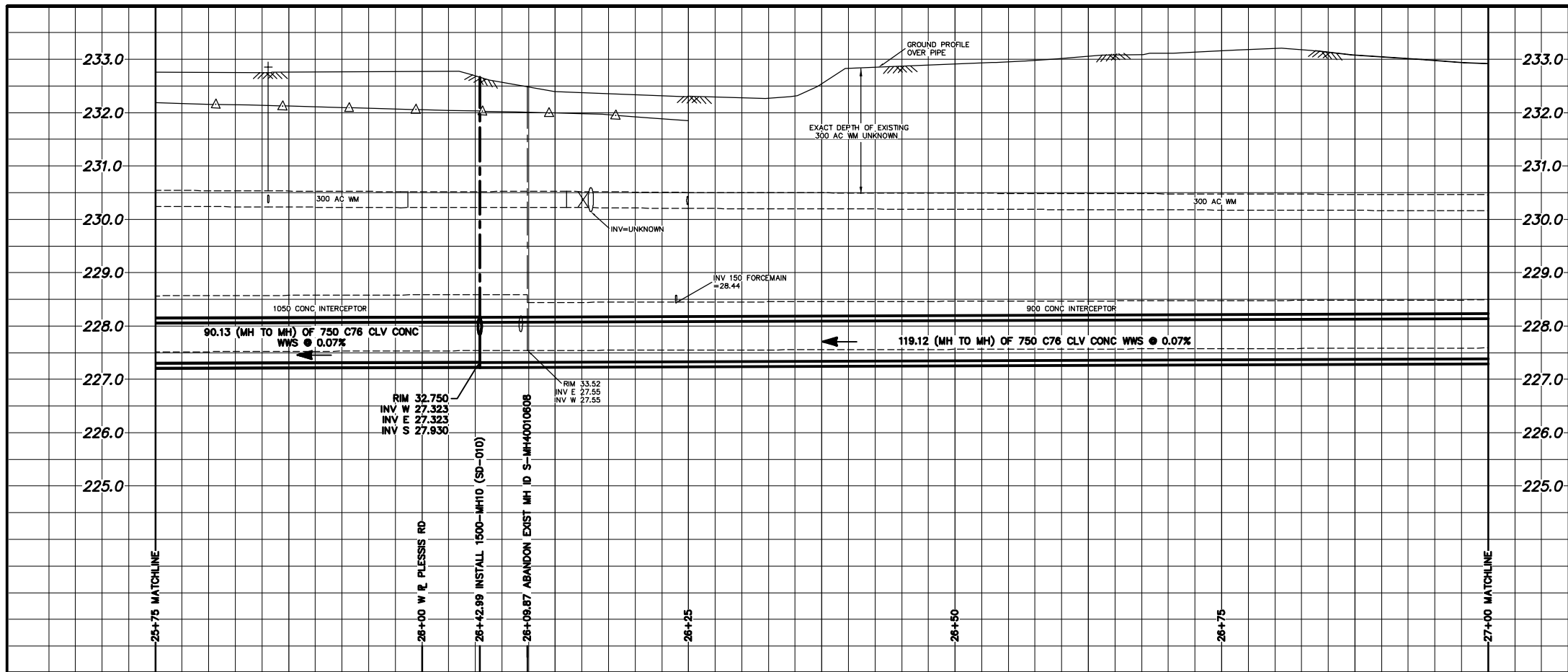
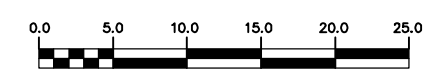
SEWER JUNCTION INFORMATION *		
SEWER ID S-MA70036967		
DISTANCE FROM MH ID S-MH40010606		
0.60 W	300	SOUTH 300 PVC WWS

SEWER JUNCTION INFORMATION *		
SEWER ID S-MA70031019		
DISTANCE FROM MH ID S-MH40010607		
129.70 W	150	SOUTH CN
142.70 W	150	SOUTH 150 FORCEMAIN

* INFORMATION FROM SEWER VIDEO INSPECTION

METRIC
WHOLE NUMBERS INDICATE MILLIMETRES
DECIMALIZED NUMBERS INDICATE METRES

WARNING
IF POWER EQUIPMENT OR EXPLOSIVES ARE TO BE USED FOR EXCAVATION ON THIS PROJECT THE CONTRACTOR
1) NOTIFY THE GAS COMPANY OF THE PROPOSED LOCATION OF EXCAVATION.
2) TAKE PRECAUTION TO AVOID DAMAGE TO GAS COMPANY INSTALLATIONS.
SEE PROVINCIAL REGULATION 210/72 FOR DETAILS



EXISTING	LEGEND-PLAN	PROPOSED	EXISTING	LEGEND-PLAN	PROPOSED	EXISTING	LEGEND-PROFILE	PROPOSED
200 WM	WATERMAIN	200 WM	SL	HYDRO	150 WM	WATERMAIN	150 WM	
525 LDS	LAND DRAINAGE SEWER	525 LDS	MTS	TRAFFIC SIGNALS	300 LDS	LAND DRAINAGE SEWER	300 LDS	
375 WWS	WASTEWATER SEWER	375 WWS	GAS	SURVEY BAR	250 WWS	WASTEWATER SEWER	250 WWS	
MANHOLE	MANHOLE	MANHOLE	FENCE	FENCE	PROFILE	PROFILE	PROFILE	
CATCH BASIN	CATCH BASIN	CATCH BASIN	POLE - HYDRO, MTS	POLE - HYDRO, MTS	GROUND ABOVE PIPE	GROUND ABOVE PIPE	GROUND ABOVE PIPE	
CURB INLET	CURB INLET	CURB INLET	CURB STOP	CURB STOP	DITCH (NORTH & WEST)	DITCH (NORTH & WEST)	DITCH (NORTH & WEST)	
JUNCTIONS	JUNCTIONS	JUNCTIONS	GUY ANCHOR	GUY ANCHOR	DITCH (SOUTH & EAST)	DITCH (SOUTH & EAST)	DITCH (SOUTH & EAST)	
CULVERT	CULVERT	CULVERT	LIGHT STANDARD	LIGHT STANDARD	GUTTER (NORTH & WEST)	GUTTER (NORTH & WEST)	GUTTER (NORTH & WEST)	
ANODE	ANODE	ANODE	TREE	TREE	GUTTER (SOUTH & EAST)	GUTTER (SOUTH & EAST)	GUTTER (SOUTH & EAST)	

LOCATION APPROVED UNDERGROUND STRUCTURES	
SUPV. U/G STRUCTURES COMMITTEE	DATE
NO.	REVISIONS
DATE	BY

CITY OF WINNIPEG WATER AND WASTE ENGINEERING DIVISION			
DESIGNED BY	CHECKED BY	DATE	REVISIONS
SC	TW/KZ	2006 02 16	
CJH	KZ		
HOR. SCALE 1:250	VERTICAL 1:50	DATE	BY
2006 02 16			

ENGINEER'S SEAL
ORIGINAL SIGNED BY S.R.J. COURNOYER 06/02/16

THE CITY OF WINNIPEG
WATER AND WASTE DEPARTMENT

DUGALD SECONDARY SEWER REPLACEMENT
DUGALD ROAD
25 W OF W R PLESSIS ROAD TO
100 E OF W R PLESSIS ROAD

SHEET 10 OF 24
CITY DRAWING NUMBER 05761

BID OPPORTUNITY: 13-2006
FILENAME: Dugald_INTERCEPTOR.dwg
PLOT DATE: 2006 02 17