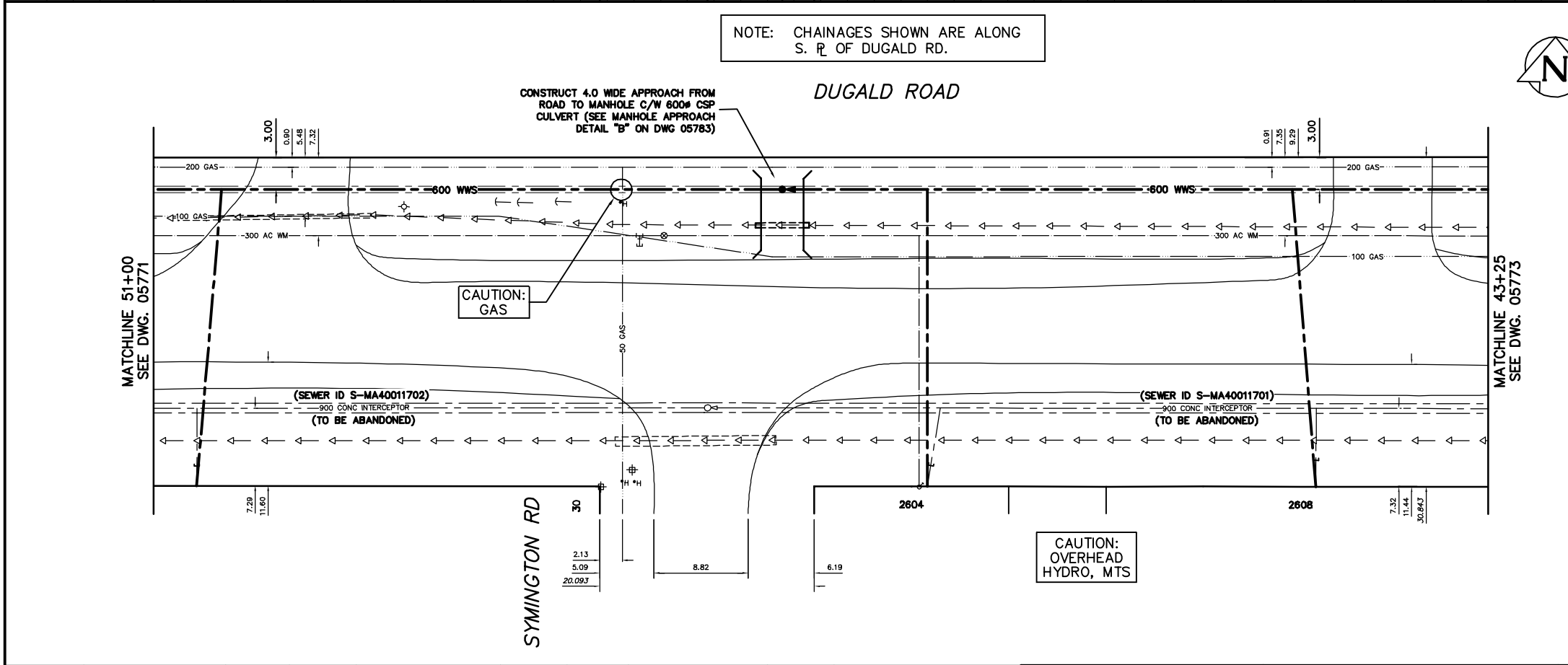


- CONSTRUCTION NOTES:**
1. ALL PIPE SHALL HAVE CLASS B - TYPE 2 BEDDING
 2. INSTALL SEWER BY TRENCHLESS METHODS.
 3. CONFIRM THE LOCATION OF ALL SEWER SERVICES.
 4. BACKFILL UNDER PAVEMENT, IN SIDEWALKS, & WITHIN 1.0 OF PAVEMENT TO BE CLASS 3.
 5. BACKFILL IN BOULEVARD TO BE CLASS 5.
 6. RENEW SEWER SERVICES TO R.
 7. INSTALL SEWER SERVICE RISERS TO ELEVATION WHERE MINIMUM SLOPE OF 1% IS MAINTAINED FOR ALL SERVICES.

NOTE: CHAINAGES SHOWN ARE ALONG S. R. OF DUGALD RD.



SEWER SERVICE INFORMATION			
ADDRESS	SIZE	R DIST	JUNCTION TIE
30 SYMINGTON RD	-	-	-
RESIDENTIAL	-	47.80 W MH AT SYMINGTON	-
2604 DUGALD RD	-	10.55 E OF WL	-
RESIDENTIAL	-	21.80 E MH AT SYMINGTON	-
2608 DUGALD RD	-	-	-
RESIDENTIAL	-	57.0 E MH AT SYMINGTON	-

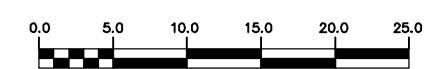
SEWER JUNCTION INFORMATION *			
SEWER ID S-MA4001702			
DISTANCE FROM MH ID S-MH40010597			
47.80 W	150#	SOUTH	30 SYMINGTON

SEWER JUNCTION INFORMATION *			
SEWER ID S-MA4001701			
DISTANCE FROM MH ID S-MH40010583			
128.70 W	150#	SOUTH	2608 DUGALD
163.90 W	150#	SOUTH	2604 DUGALD

* INFORMATION FROM SEWER VIDEO INSPECTION

METRIC
WHOLE NUMBERS INDICATE MILLIMETRES
DECIMALIZED NUMBERS INDICATE METRES

WARNING
IF POWER EQUIPMENT OR EXPLOSIVES ARE TO BE USED FOR EXCAVATION ON THIS PROJECT THE CONTRACTOR
1) NOTIFY THE GAS COMPANY OF THE PROPOSED LOCATION OF EXCAVATION.
2) TAKE PRECAUTION TO AVOID DAMAGE TO GAS COMPANY INSTALLATIONS.
SEE PROVINCIAL REGULATION 210/72 FOR DETAILS



200 WM	WATERMAIN	200 WM	SL, HYDRO	150 WM	WATERMAIN	150 WM
+	HYDRANT	+	MTS	+	HYDRANT	+
⊙	VALVE	⊙	TRAFFIC SIGNALS	+	VALVE	+
525 LDS	LAND DRAINAGE SEWER	525 LDS	GAS	300 LDS	LAND DRAINAGE SEWER	300 LDS
375 WWS	WASTEWATER SEWER	375 WWS	SURVEY BAR	250 WWS	WASTEWATER SEWER	250 WWS
○	MANHOLE	○	FENCE	⊕	PROFILE	⊕
□	CATCH BASIN	□	POLE - HYDRO, MTS	⊕	GROUND ABOVE PIPE	⊕
▽	CURB INLET	▽	CURB STOP	⊕	⊕ DITCH (NORTH & WEST)	⊕
⊕	JUNCTIONS	⊕	GUY ANCHOR	⊕	⊕ DITCH (SOUTH & EAST)	⊕
⊕	CULVERT	⊕	LIGHT STANDARD	⊕	⊕ GUTTER (NORTH & WEST)	⊕
⊕	ANODE	⊕	TREE	⊕	⊕ GUTTER (SOUTH & EAST)	⊕
EXISTING	LEGEND-PLAN	PROPOSED	EXISTING	LEGEND-PLAN	PROPOSED	EXISTING
---	LEGEND-PROFILE	---	---	LEGEND-PROFILE	---	---

LOCATION APPROVED UNDERGROUND STRUCTURES

SUPV. U/G STRUCTURES COMMITTEE DATE

NOTE:
LOCATION OF UNDERGROUND STRUCTURES AS SHOWN ARE BASED ON THE BEST INFORMATION AVAILABLE BUT NO GUARANTEE IS GIVEN THAT ALL EXISTING UTILITIES ARE SHOWN OR THAT THE GIVEN LOCATIONS ARE EXACT. CONFIRMATION OF EXISTENCE AND EXACT LOCATION OF ALL SERVICES MUST BE OBTAINED FROM THE INDIVIDUAL UTILITIES BEFORE PROCEEDING WITH CONSTRUCTION.

NO.	REVISIONS	DATE	BY

CITY OF WINNIPEG
WATER AND WASTE
ENGINEERING DIVISION

DESIGNED BY SC CHECKED BY TW/KZ
DRAWN BY CJH APPROVED BY KZ

HOR. SCALE 1:250
VERTICAL 1:50

DATE 2006 02 16

ENGINEER'S SEAL

ORIGINAL SIGNED BY S.R.J. COURNOYER 06/02/16

FILE NAME: Dugald_Interceptor.dwg
PLOT DATE: 2006 02 17

THE CITY OF WINNIPEG
WATER AND WASTE DEPARTMENT

DUGALD SECONDARY SEWER REPLACEMENT
DUGALD ROAD
42 W OF W R SYMINGTON ROAD TO
63 E OF E R SYMINGTON ROAD

SHEET 21 OF 24
CITY DRAWING NUMBER 05772