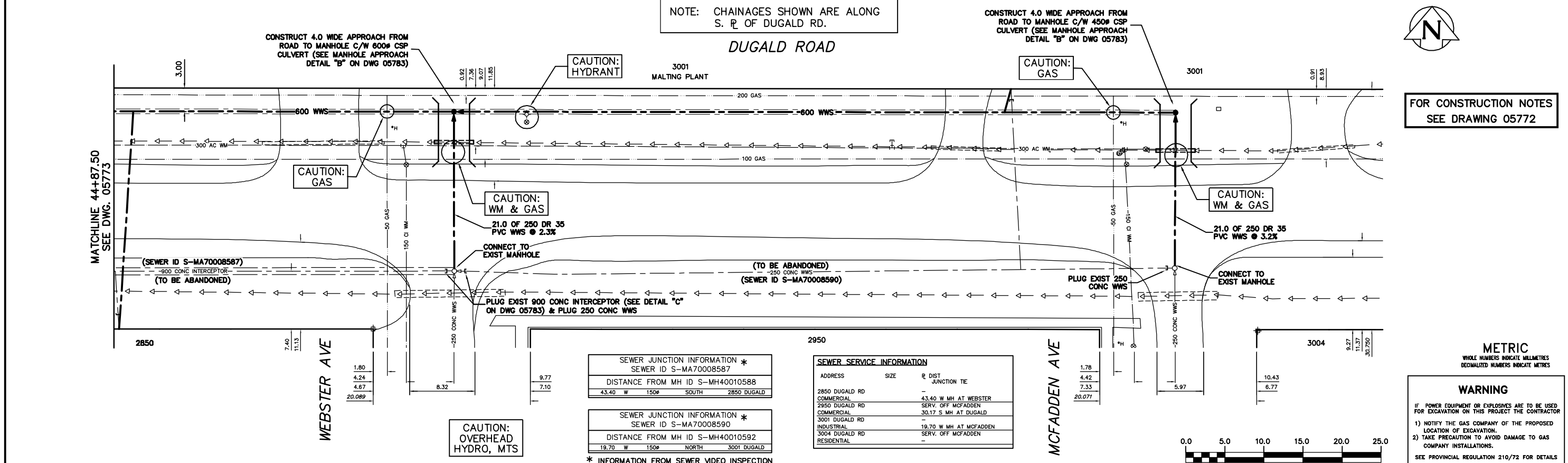


NOTE: CHAINAGES SHOWN ARE ALONG S. E. OF DUGALD RD.

DUGALD ROAD



FOR CONSTRUCTION NOTES SEE DRAWING 05772

METRIC
WHOLE NUMBERS INDICATE MILLIMETRES
DECIMALIZED NUMBERS INDICATE METRES

WARNING
IF POWER EQUIPMENT OR EXPLOSIVES ARE TO BE USED FOR EXCAVATION ON THIS PROJECT THE CONTRACTOR
1) NOTIFY THE GAS COMPANY OF THE PROPOSED LOCATION OF EXCAVATION.
2) TAKE PRECAUTION TO AVOID DAMAGE TO GAS COMPANY INSTALLATIONS.
SEE PROVINCIAL REGULATION 210/72 FOR DETAILS

SEWER JUNCTION INFORMATION *	
SEWER ID S-MA70008587	
DISTANCE FROM MH ID S-MH40010588	
43.40 W	150# SOUTH 2850 DUGALD

SEWER JUNCTION INFORMATION *	
SEWER ID S-MA70008590	
DISTANCE FROM MH ID S-MH40010592	
19.70 W	150# NORTH 3001 DUGALD

* INFORMATION FROM SEWER VIDEO INSPECTION

SEWER SERVICE INFORMATION			
ADDRESS	SIZE	R DIST	JUNCTION TIE
2850 DUGALD RD	COMMERCIAL	43.40 W MH AT WEBSTER	
2950 DUGALD RD	COMMERCIAL	SERV. OFF MCFADDEN	
3001 DUGALD RD	INDUSTRIAL	30.17 S MH AT DUGALD	
3004 DUGALD RD	RESIDENTIAL	19.70 W MH AT MCFADDEN	
		SERV. OFF MCFADDEN	

EXISTING	LEGEND-PLAN	PROPOSED	EXISTING	LEGEND-PLAN	PROPOSED	EXISTING	LEGEND-PROFILE	PROPOSED
200 WM	WATERMAIN	200 WM	SL	HYDRO	150 WM	WATERMAIN	150 WM	WATERMAIN
525 LDS	LAND DRAINAGE SEWER	525 LDS	50 GAS	50 GAS	300 LDS	LAND DRAINAGE SEWER	300 LDS	LAND DRAINAGE SEWER
375 WWS	WASTEWATER SEWER	375 WWS	250 WWS	250 WWS	250 WWS	WASTEWATER SEWER	250 WWS	WASTEWATER SEWER
MANHOLE	MANHOLE	MANHOLE	FENCE	FENCE	PROFILE	PROFILE	PROFILE	PROFILE
CATCH BASIN	CATCH BASIN	CATCH BASIN	POLE - HYDRO, MTS	POLE - HYDRO, MTS	GROUND ABOVE PIPE	GROUND ABOVE PIPE	GROUND ABOVE PIPE	GROUND ABOVE PIPE
CURB INLET	CURB INLET	CURB INLET	CURB STOP	CURB STOP	DITCH (NORTH & WEST)	DITCH (NORTH & WEST)	DITCH (NORTH & WEST)	DITCH (NORTH & WEST)
JUNCTIONS	JUNCTIONS	JUNCTIONS	GUY ANCHOR	GUY ANCHOR	DITCH (SOUTH & EAST)	DITCH (SOUTH & EAST)	DITCH (SOUTH & EAST)	DITCH (SOUTH & EAST)
CULVERT	CULVERT	CULVERT	LIGHT STANDARD	LIGHT STANDARD	GUTTER (NORTH & WEST)	GUTTER (NORTH & WEST)	GUTTER (NORTH & WEST)	GUTTER (NORTH & WEST)
ANODE	ANODE	ANODE	TREE	TREE	GUTTER (SOUTH & EAST)	GUTTER (SOUTH & EAST)	GUTTER (SOUTH & EAST)	GUTTER (SOUTH & EAST)

LOCATION APPROVED	
UNDERGROUND STRUCTURES	
SUPV. U/G STRUCTURES COMMITTEE	DATE
NOTE: LOCATION OF UNDERGROUND STRUCTURES AS SHOWN ARE BASED ON THE BEST INFORMATION AVAILABLE BUT NO GUARANTEE IS GIVEN THAT ALL EXISTING UTILITIES ARE SHOWN OR THAT THE GIVEN LOCATIONS ARE EXACT. CONFIRMATION OF EXISTENCE AND EXACT LOCATION OF ALL SERVICES MUST BE OBTAINED FROM THE INDIVIDUAL UTILITIES BEFORE PROCEEDING WITH CONSTRUCTION.	

CITY OF WINNIPEG WATER AND WASTE ENGINEERING DIVISION			
DESIGNED BY	SC	CHECKED BY	TW/KZ
DRAWN BY	CJH	APPROVED BY	KZ
HOR. SCALE	1:250	RELEASED FOR CONSTRUCTION	
VERTICAL	1:50		
DATE	2006 02 16	DATE	

ENGINEER'S SEAL
ORIGINAL SIGNED BY S.R.J. COURNOYER 06/02/16

THE CITY OF WINNIPEG
WATER AND WASTE DEPARTMENT

DUGALD SECONDARY SEWER REPLACEMENT
DUGALD ROAD
40 E OF E R BORDEN AVENUE TO 16 E OF E R MCFADDEN AVENUE

SHEET 23 OF 24
CITY DRAWING NUMBER 05774