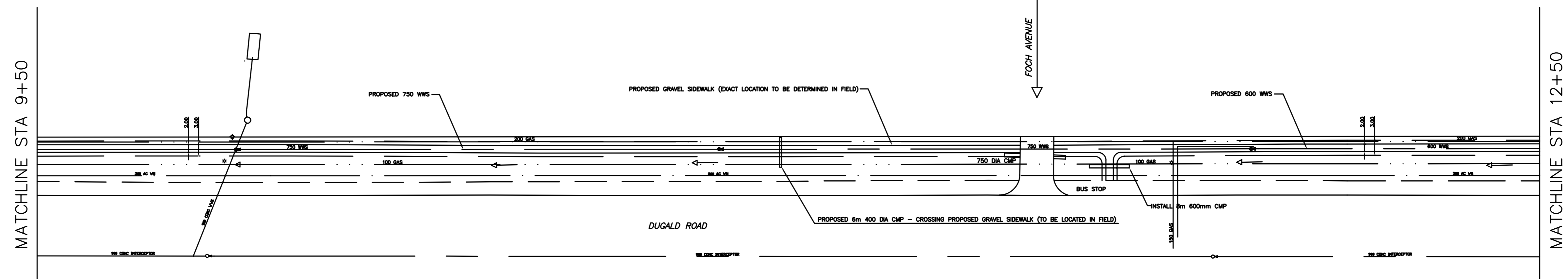
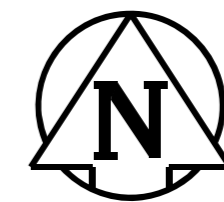


ALL CHAINAGES ARE MEASURED ALONG THE GUTTER LINE OF DUGALD ROAD

- CONSTRUCTION NOTES**
- 1) CURB REPLACEMENT AS DIRECTED BY THE CONTRACT ADMINISTRATOR
 - 2) ALL STREET RADIUS CURB UNDER 15M RADIUS SHALL BE REPLACED AS MODIFIED OR AS DIRECTED BY THE CONTRACT ADMINISTRATOR
 - 3) PAVEMENT REPAIRS SHOWN ARE ONLY A REPRESENTATIVE SAMPLE OF THE TENDERED QUANTITIES
 - 4) ASPHALT TIE-INS ON APPROACHES TO BE DETERMINED IN THE FIELD BY THE CONTRACT ADMINISTRATOR.
 - 5) ALL BULLNOSES TO HAVE SLOPED FACE.



WARNING

IF POWER EQUIPMENT OR EXPLOSIVES ARE TO BE USED FOR EXCAVATION ON THIS PROJECT THE CONTRACTOR MUST:

- 1) OBTAIN CLEARANCE FROM THE GAS UTILITY PRIOR TO EXCAVATION.
- 2) TAKE PRECAUTION TO AVOID DAMAGE TO GAS UTILITY INSTALLATIONS.

SEE PROVINCIAL REGULATION 210/72 FOR DETAILS

WHOLE NUMBERS INDICATE MILLIMETRES
DECIMALIZED NUMBERS INDICATE METRES

BID OPPURTUNITY NO. 13-2006

150 mm WM	WATERMAIN	150 mm WM	HYDRO	150 mm WM	WATERMAIN
⊕	HYDRANT	⊕	MTS	+	HYDRANT
⊖	VALVE	⊖	GAS	X	VALVE
⊙	CURB STOP	⊙	SHOULDER	300 mm LDS	SEWER
			LIMIT OF ASPHALT		300 mm LDS
			GRAVEL SIDEWALK		GRAVEL SIDEWALK
○	MANHOLE	●	ELEVATIONS	[31.000]	PROPERTY LINE
□	CATCH BASIN	■	PROPERTY LINE		SURVEY BAR
△	CURB INLET	▲	RAMP CURB		RAMP CURB
☆	WOOD POLES	⊕			
○-○	LAMP STANDARDS				
—	EXISTING	—	PROPOSED	—	EXISTING
—	LEGEND - PLAN	—	LEGEND - PROFILE	—	PROPOSED

LOCATION APPROVED UNDERGROUND STRUCTURES

SUPR. U/G STRUCTURES DATE COMMITTEE

NOTE: LOCATION OF UNDERGROUND STRUCTURES AS SHOWN ARE BASED ON THE BEST INFORMATION AVAILABLE. BUT NO GUARANTEE IS GIVEN THAT ALL EXISTING UTILITIES ARE SHOWN OR THAT THE GIVEN LOCATIONS ARE EXACT. CONFIRMATION OF EXISTENCE AND EXACT LOCATION OF ALL SERVICES MUST BE OBTAINED FROM THE INDIVIDUAL UTILITIES BEFORE PROCEEDING WITH CONSTRUCTION.

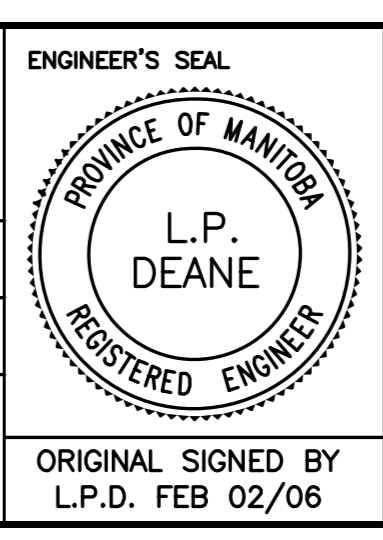
NO.	REVISIONS	DATE	BY

ENGINEERING DIVISION TECHNOLOGY SERVICES BRANCH 106 - 1155 PACIFIC AVE

DESIGNED BY A.P. CHECKED BY B.K.
DRAWN BY A.P. APPROVED BY L.P.D.

HOR. SCALE: 1 : 500
VERTICAL: 1 : 50

DATE 06/01/30



THE CITY OF WINNIPEG PUBLIC WORKS DEPARTMENT

PROPOSED DUGALD ROAD GRAVEL SIDEWALK

FROM PLESSIS ROAD TO BORDEN AVENUE
FROM STA. 9+50 TO STA. 12+50

CITY DRAWING NUMBER SE-06-04
SHEET 4 OF 6
4