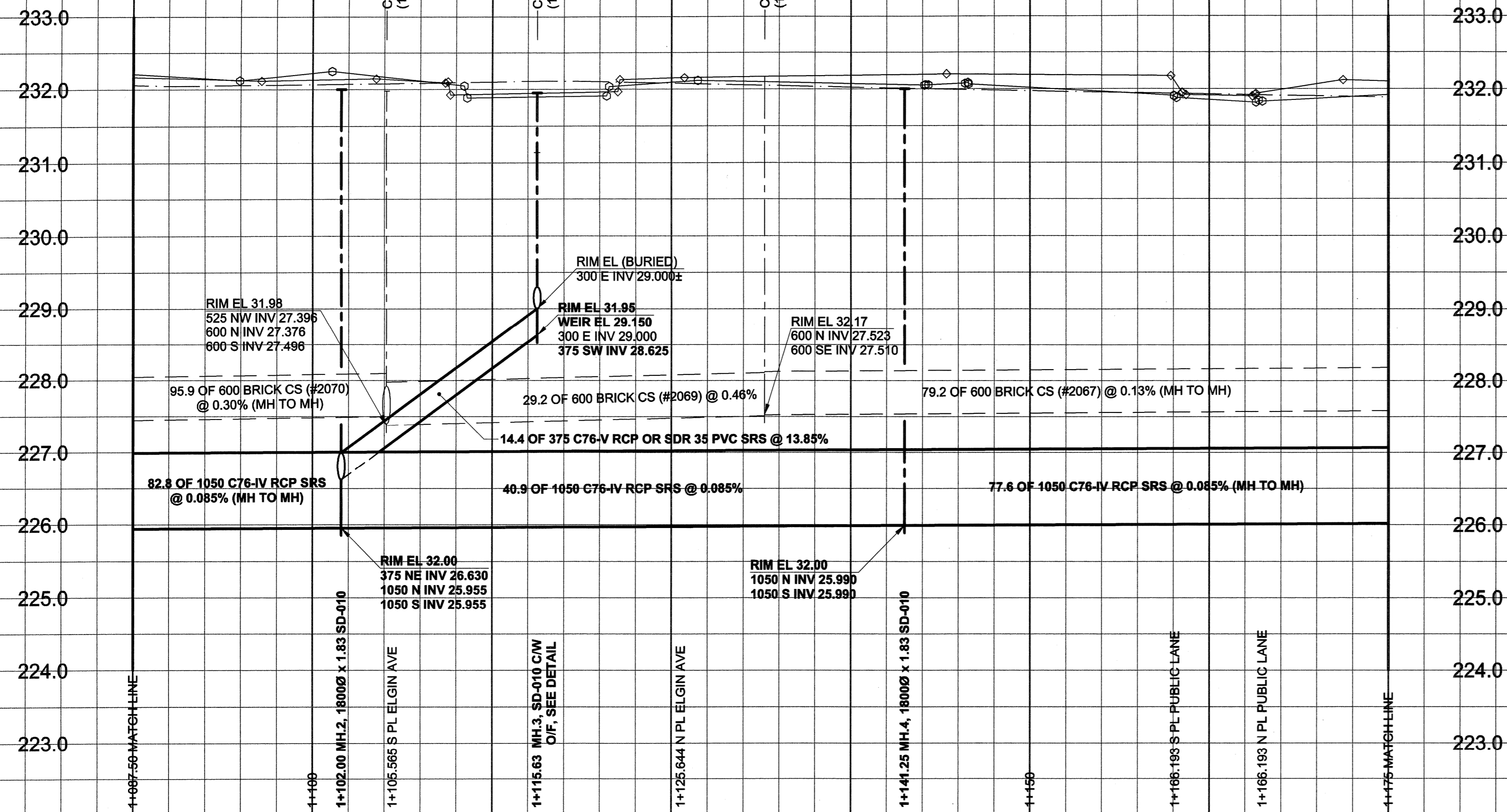


D SIZE 22" x 34" (559mm x 864mm)

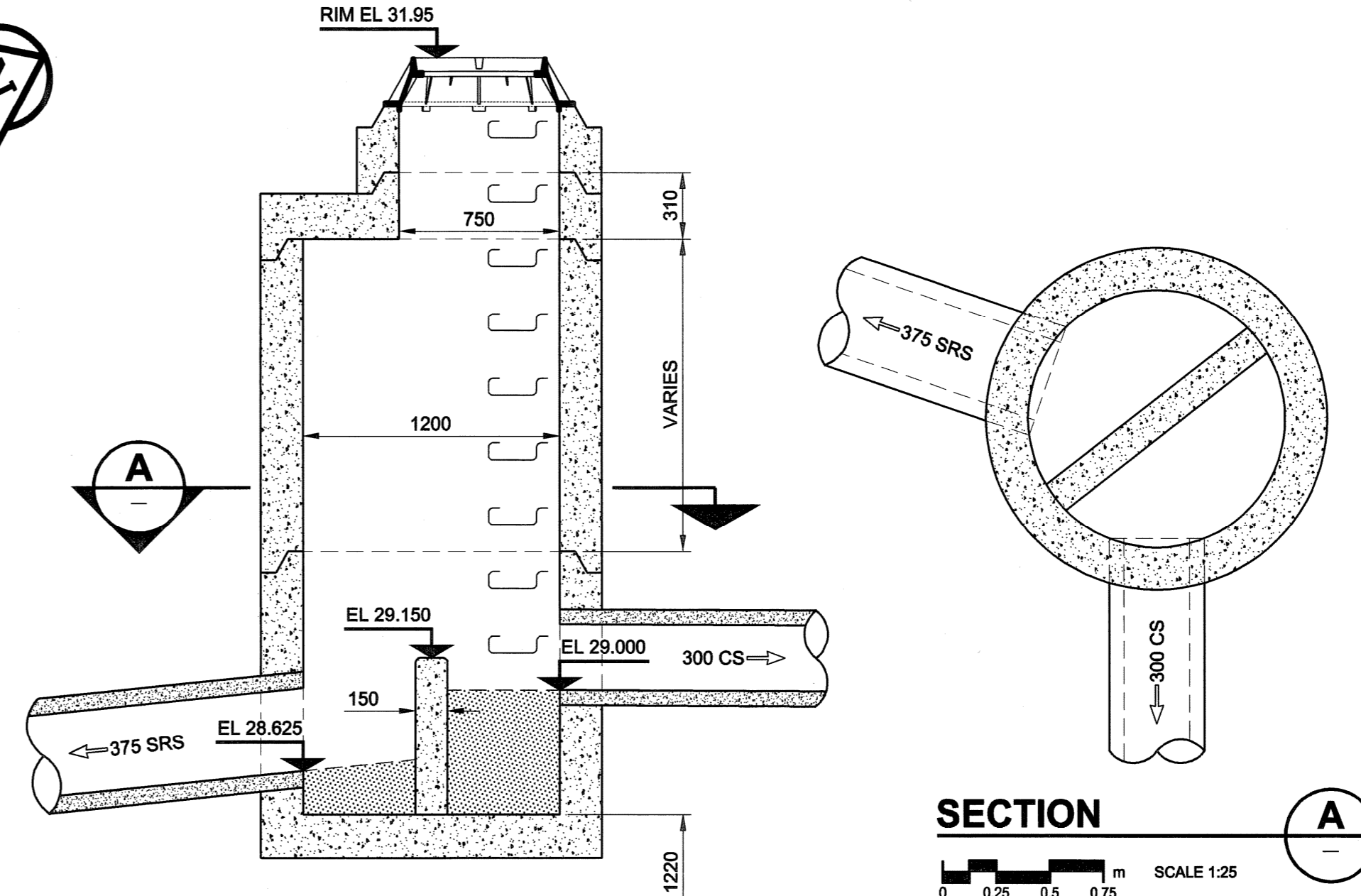
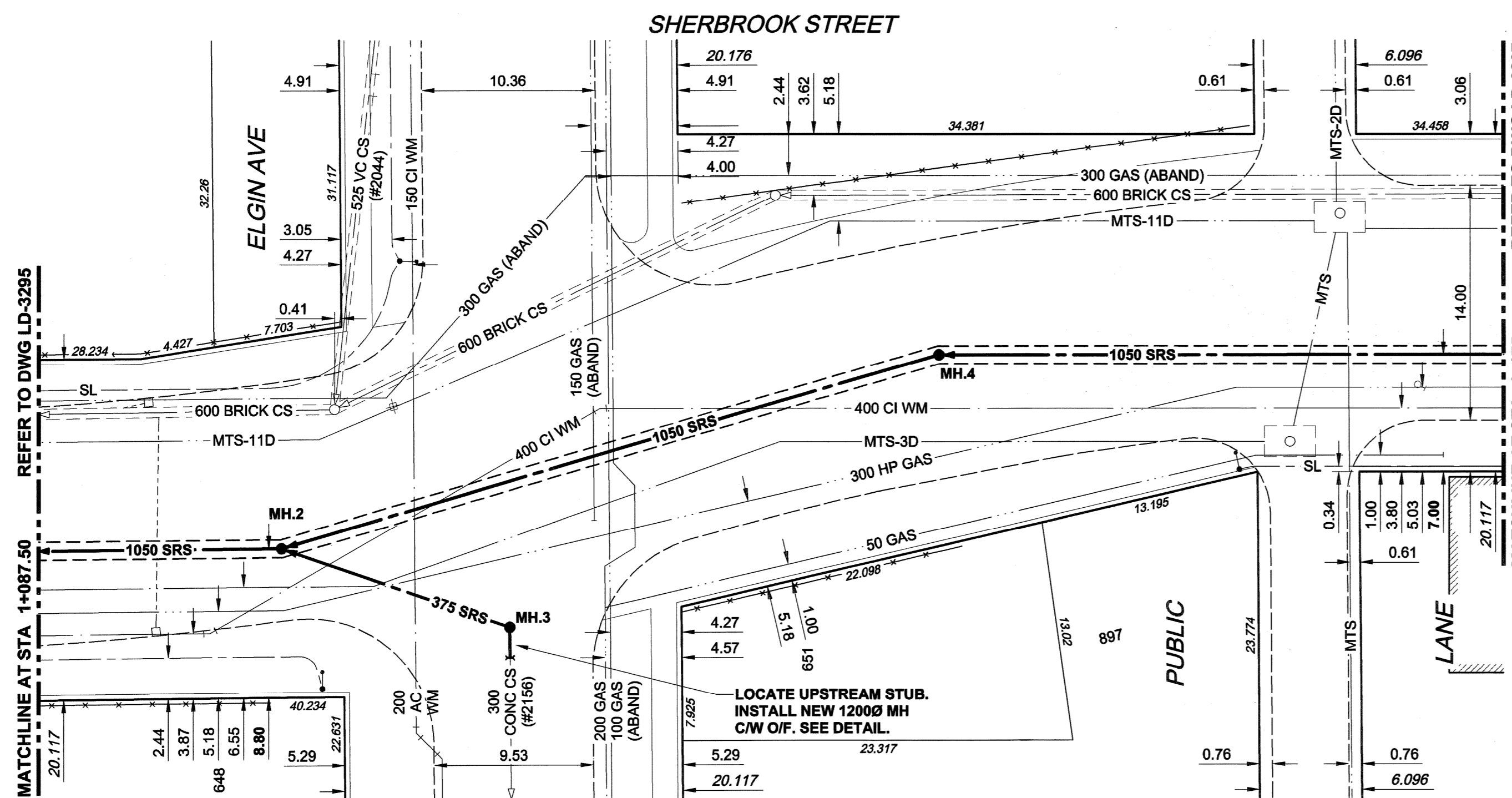
PLOT: 06/03/11 12:30:19 PM

UMA FILE NAME: D265-177-02\_01-C-0002\_RX.dwg Saved By: dlane

EXISTING FEATURES



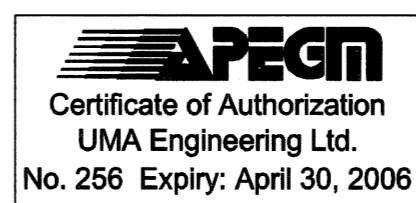
CHAINAGE ALONG E PL



MANHOLE 3 OVERFLOW DETAIL

TYPICAL MANHOLE REQUIREMENTS AS PER SD-010

METRIC  
WHOLE NUMBERS INDICATE MILLIMETRES  
DECIMAL NUMBERS INDICATE METRES



- CONSTRUCTION NOTES:
1. FOR DETAILED TEST HOLE INFORMATION, SEE SPECIFICATION.
  2. THE LOCATION OF ALL SERVICES IS TO BE CONFIRMED IN THE FIELD.
  3. INSTALL NEW SEWERS AND CATCHBASIN LEADS BY TRENCHLESS METHODS WHEREVER POSSIBLE.
  4. RENEW/REHABILITATE CATCHBASINS & RENEW CATCHBASIN LEADS WHERE NOTED.

**WARNING**  
IF POWER EQUIPMENT OR EXPLOSIVES ARE TO BE USED FOR EXCAVATION ON THIS PROJECT, THE CONTRACTOR MUST:  
1) NOTIFY THE GAS COMPANY OF THE PROPOSED LOCATION OF EXCAVATION.  
2) TAKE PRECAUTION TO AVOID DAMAGE TO GAS COMPANY INSTALLATIONS.  
SEE PROVINCIAL REGULATION 140/92 FOR DETAILS

150 mm WM		150 mm WM		CURB STOP		150 mm WM		150 mm WM	
	HYDRANT		VALVE		REDUCER		WATERMAIN		HYDRANT
	VALVE		COUPLING		COUPLING		VALVE		VALVE
	LAND DRAINAGE SEWER		WASTE WATER SEWER		ANODE		LAND DRAINAGE SEWER		WASTE WATER SEWER
	MANHOLE		CATCH BASIN		HYDRO		PAVEMENT CROWN		N/W PROPERTY LINE
	CATCH BASIN		CURB INLET		GAS		S/E PROPERTY LINE		N/W GUTTER
	CULVERT		PIPE ABANDONMENTS		TESTHOLE		S/E GUTTER		TREE
	SURVEY BAR		EXISTING LEGEND - PLAN		LAMP STANDARD		EXISTING LEGEND - PROFILE		NEW LEGEND - PLAN
	EXISTING LEGEND - PLAN		NEW LEGEND - PLAN		EXISTING LEGEND - PROFILE		NEW LEGEND - PROFILE		EXISTING LEGEND - PLAN

LOCATION APPROVED  
UNDERGROUND STRUCTURES

NOTE:  
LOCATION OF UNDERGROUND STRUCTURES AS SHOWN ARE BASED ON THE BEST INFORMATION AVAILABLE. BUT NO GUARANTEE IS GIVEN THAT ALL EXISTING UTILITIES ARE SHOWN OR THAT THE GIVEN LOCATIONS ARE EXACT. CONFIRMATION OF EXISTENCE AND EXACT LOCATION OF ALL SERVICES MUST BE OBTAINED FROM THE INDIVIDUAL UTILITIES BEFORE PROCEEDING WITH CONSTRUCTION.

BM 36-039 ELEV 232.749m	N. Side William Ave. W. of Sherbrook St., Tbl. in S. Conc. foundation No. 671 William Ave. (Harry Medovy House), 5.2m W. & 0.6m below bricks of most S. Ely. Cor. of Bldg.
NO.	REVISIONS
0	ISSUED FOR CONSTRUCTION 06/03/08 ADL
	YY/MM/DD BY

DESIGNED BY GEB		CHECKED BY <i>[Signature]</i>	
DRAWN BY ADL		APPROVED BY <i>[Signature]</i>	
HOR. SCALE 1:250		RELEASED FOR CONSTRUCTION	
VERT. SCALE 1:50		DATE 06/03/14	

PROFESSIONAL'S SEAL  
A. NAGY  
March 13, 2006  
REGISTERED PROFESSIONAL ENGINEER  
CONSULTANT DRAWING NO. 02  
D265-177-02-01

**THE CITY OF WINNIPEG**  
WATER AND WASTE DEPARTMENT

**ALEXANDER/BANNATYNE**  
COMBINED SEWER RELIEF  
CONTRACT 2A

SHERBROOK STREET  
70m NORTH OF WILLIAM AVENUE  
TO 25m SOUTH OF ROSS AVENUE

SHEET 2 OF 21  
CITY DRAWING NUMBER  
LD-3296  
REV 0

BID OPPORTUNITY NO. 132-2006