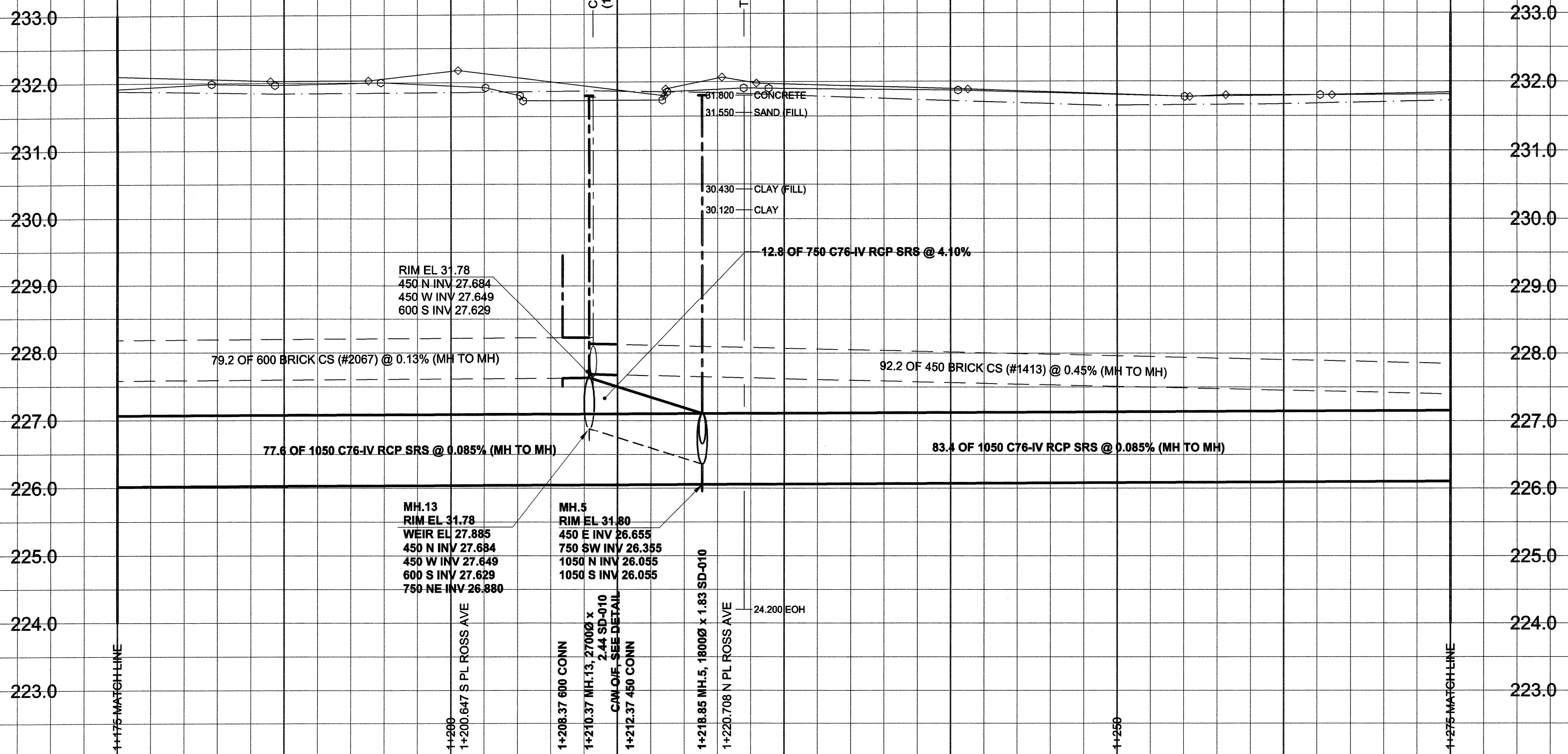
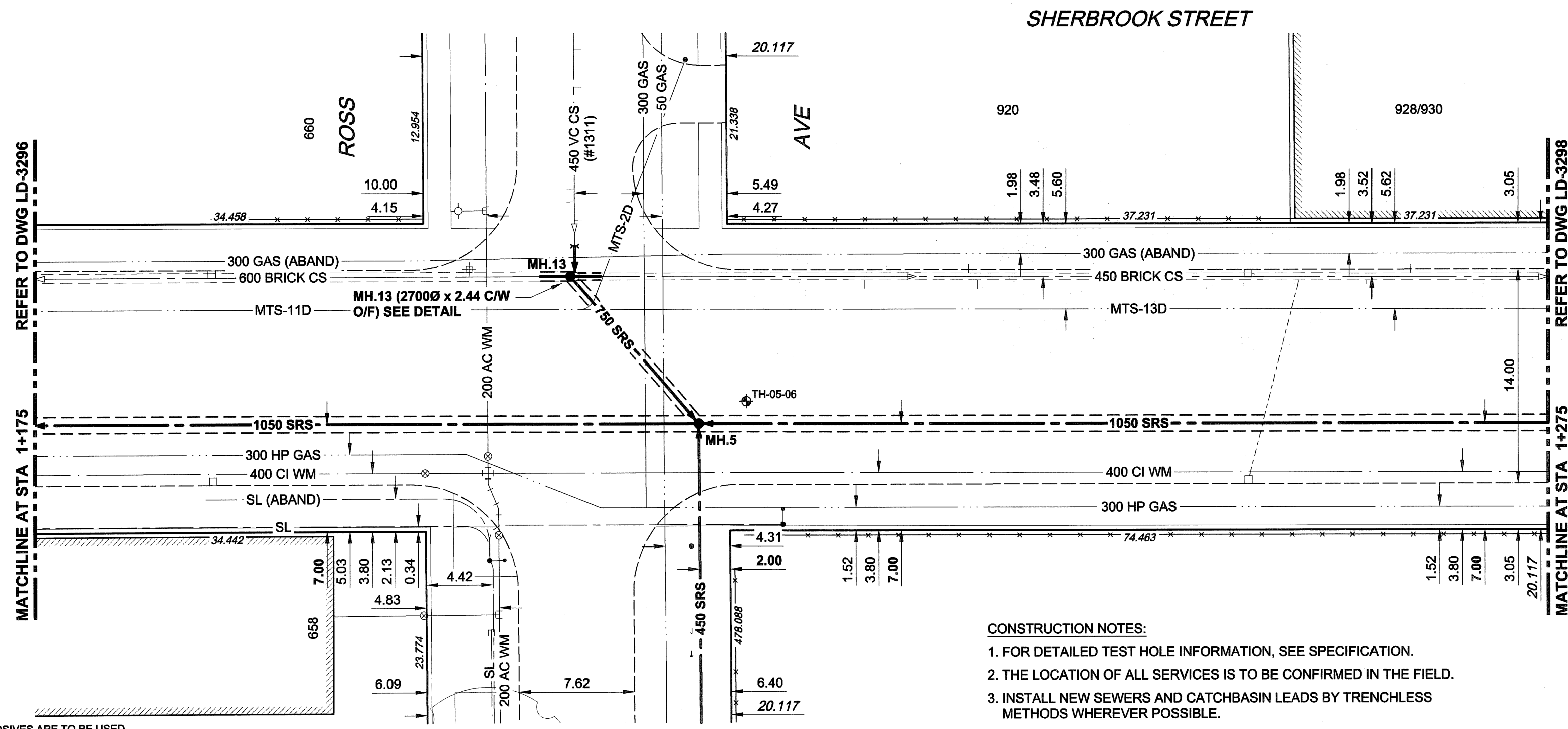


D SIZE 22" x 34" 650mm x 864mm

EXISTING FEATURES

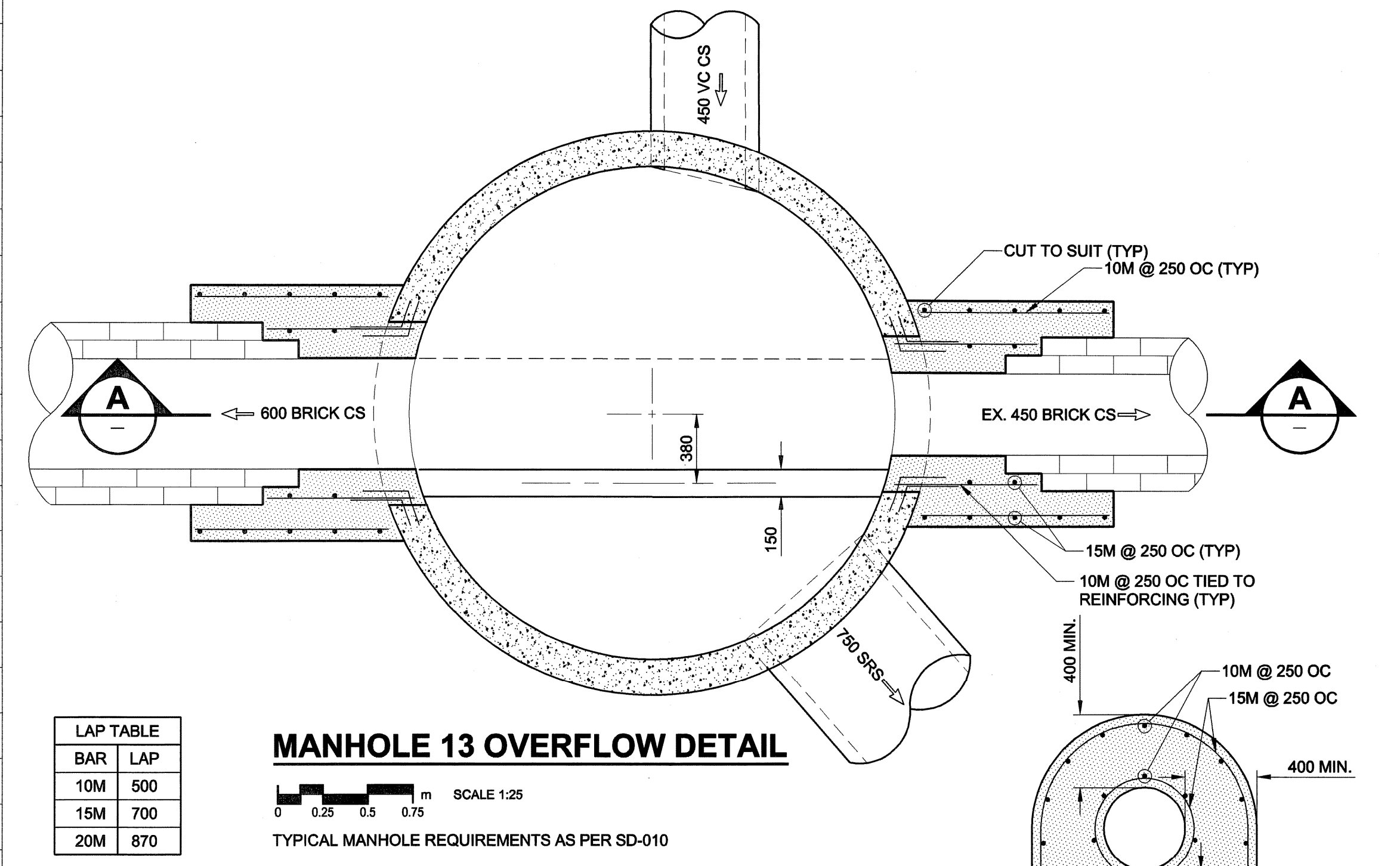


CHAINAGE ALONG E PL



- CONSTRUCTION NOTES:**
- FOR DETAILED TEST HOLE INFORMATION, SEE SPECIFICATION.
 - THE LOCATION OF ALL SERVICES IS TO BE CONFIRMED IN THE FIELD.
 - INSTALL NEW SEWERS AND CATCHBASIN LEADS BY TRENCHLESS METHODS WHEREVER POSSIBLE.
 - RENEW/REHABILITATE CATCHBASINS & RENEW CATCHBASIN LEADS WHERE NOTED.

FOR FURTHER INFO SEE DWG LD-3300



LAP TABLE

BAR	LAP
10M	500
15M	700
20M	870

MANHOLE 13 OVERFLOW DETAIL

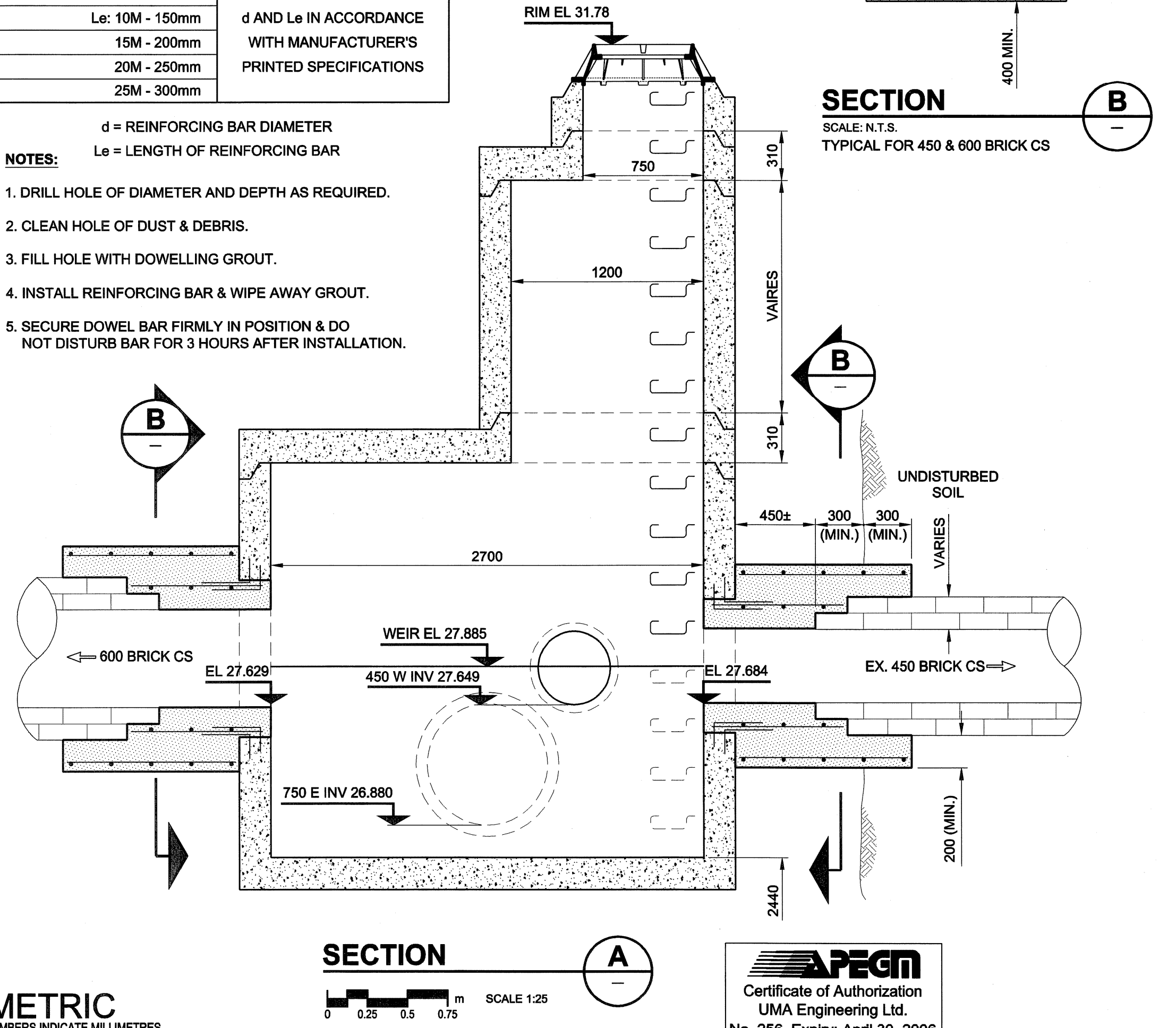
SCALE 1:25
TYPICAL MANHOLE REQUIREMENTS AS PER SD-010

HYDRAULIC CEMENT GROUT	EXPOXY GROUT
d = BAR DIA. +20mm	d AND Le IN ACCORDANCE WITH MANUFACTURER'S PRINTED SPECIFICATIONS
Le: 10M - 150mm	
15M - 200mm	
20M - 250mm	
25M - 300mm	

d = REINFORCING BAR DIAMETER
Le = LENGTH OF REINFORCING BAR

NOTES:

- DRILL HOLE OF DIAMETER AND DEPTH AS REQUIRED.
- CLEAN HOLE OF DUST & DEBRIS.
- FILL HOLE WITH DOWELLING GROUT.
- INSTALL REINFORCING BAR & WIPE AWAY GROUT.
- SECURE DOWEL BAR FIRMLY IN POSITION & DO NOT DISTURB BAR FOR 3 HOURS AFTER INSTALLATION.



METRIC
WHOLE NUMBERS INDICATE MILLIMETRES
DECIMALIZED NUMBERS INDICATE METRES

SECTION A
SCALE 1:25

SECTION B
SCALE: N.T.S.
TYPICAL FOR 450 & 600 BRICK CS

WARNING
IF POWER EQUIPMENT OR EXPLOSIVES ARE TO BE USED FOR EXCAVATION ON THIS PROJECT, THE CONTRACTOR MUST:
1) NOTIFY THE GAS COMPANY OF THE PROPOSED LOCATION OF EXCAVATION.
2) TAKE PRECAUTION TO AVOID DAMAGE TO GAS COMPANY INSTALLATIONS.
SEE PROVINCIAL REGULATION 140/92 FOR DETAILS

150 mm WM	WATERMAIN	150 mm WM	CURB STOP	150 mm WM	WATERMAIN	150 mm WM	WATERMAIN
Hydrant	Hydrant	Reducer	Reducer	Hydrant	Hydrant	Hydrant	Hydrant
Valve	Valve	Coupling	Coupling	Valve	Valve	Valve	Valve
300 mm LDS	LAND DRAINAGE SEWER	Anode	Anode	300 mm LDS	LAND DRAINAGE SEWER	300 mm LDS	LAND DRAINAGE SEWER
250 mm WWS	WASTE WATER SEWER	Hydro	Hydro	250 mm WWS	WASTE WATER SEWER	250 mm WWS	WASTE WATER SEWER
Manhole	Manhole	MTS	MTS	Manhole	Manhole	Manhole	Manhole
Catch Basin	Catch Basin	Gas	Gas	Catch Basin	Catch Basin	Catch Basin	Catch Basin
Curb Inlet	Curb Inlet	Testhole	Testhole	Curb Inlet	Curb Inlet	Curb Inlet	Curb Inlet
Culvert	Culvert	Lamp Standard	Lamp Standard	Culvert	Culvert	Culvert	Culvert
Pipe Abandonments	Pipe Abandonments	Tree	Tree	Pipe Abandonments	Pipe Abandonments	Pipe Abandonments	Pipe Abandonments
Survey Bar	Survey Bar			Survey Bar	Survey Bar	Survey Bar	Survey Bar
EXISTING	LEGEND - PLAN	NEW	LEGEND - PLAN	EXISTING	LEGEND - PROFILE	NEW	LEGEND - PROFILE

LOCATION APPROVED
UNDERGROUND STRUCTURES

SUPR. U/G STRUCTURES DATE COMMITTEE

NOTE:
LOCATION OF UNDERGROUND STRUCTURES AS SHOWN ARE BASED ON THE BEST INFORMATION AVAILABLE. BUT NO GUARANTEE IS GIVEN THAT ALL EXISTING UTILITIES ARE SHOWN OR THAT THE GIVEN LOCATIONS ARE EXACT. CONFIRMATION OF EXISTENCE AND EXACT LOCATION OF ALL SERVICES MUST BE OBTAINED FROM THE INDIVIDUAL UTILITIES BEFORE PROCEEDING WITH CONSTRUCTION.

BM 36-039	N. Side William Ave. W. of Sherbrook St., Tbl. in S. Conc. foundation No. 871 William Ave. (Harry Medovy House), 5.2m W. & 0.6m below bricks of most S. Ely. Cor. of Bldg.		
ELEV 232.749m			
0	ISSUED FOR CONSTRUCTION	06/03/08	ADL
NO.	REVISIONS	YYMMDD	BY

UMA AECOM	
©2005 UMA ENGINEERING LTD. ALL RIGHTS RESERVED.	
DESIGNED BY: GEB	CHECKED BY: [Signature]
DRAWN BY: ADL	APPROVED BY: [Signature]
HOR. SCALE: 1:250	RELEASED FOR CONSTRUCTION
VERT. SCALE: 1:50	DATE: March 14/08
DATE: 06/03/14	DATE: March 14/08

PROFESSIONAL'S SEAL
PROVINCE OF MANITOBA
REGISTERED PROFESSIONAL ENGINEER
A. NAGY
March 13, 2008

THE CITY OF WINNIPEG WATER AND WASTE DEPARTMENT

ALEXANDER/BANNATYNE COMBINED SEWER RELIEF CONTRACT 2A

SHERBROOK STREET
75m NORTH OF ELGIN AVENUE
TO 20m SOUTH OF PACIFIC AVENUE

SHEET 3 OF 21
CITY DRAWING NUMBER
LD-3297
REV 0

BID OPPORTUNITY NO. 132-2006