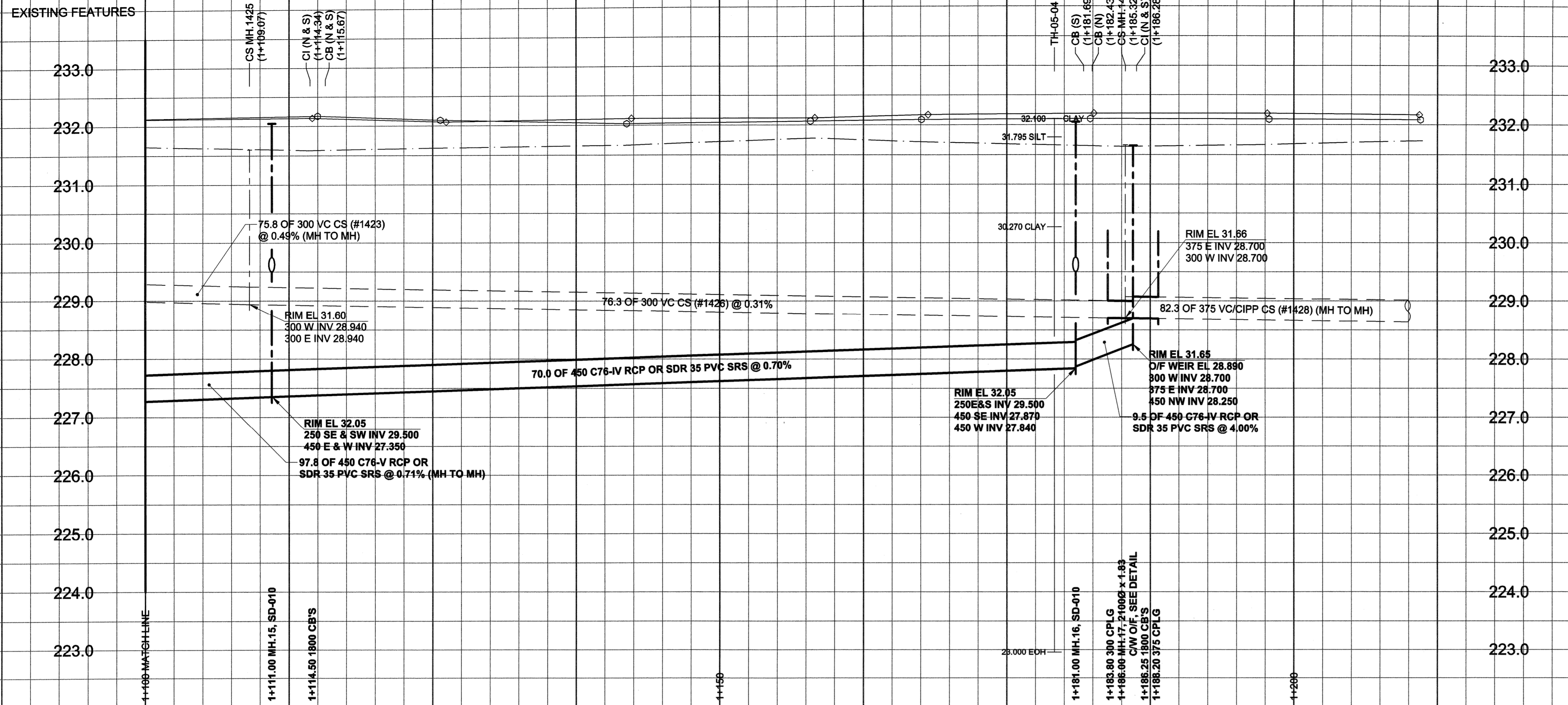


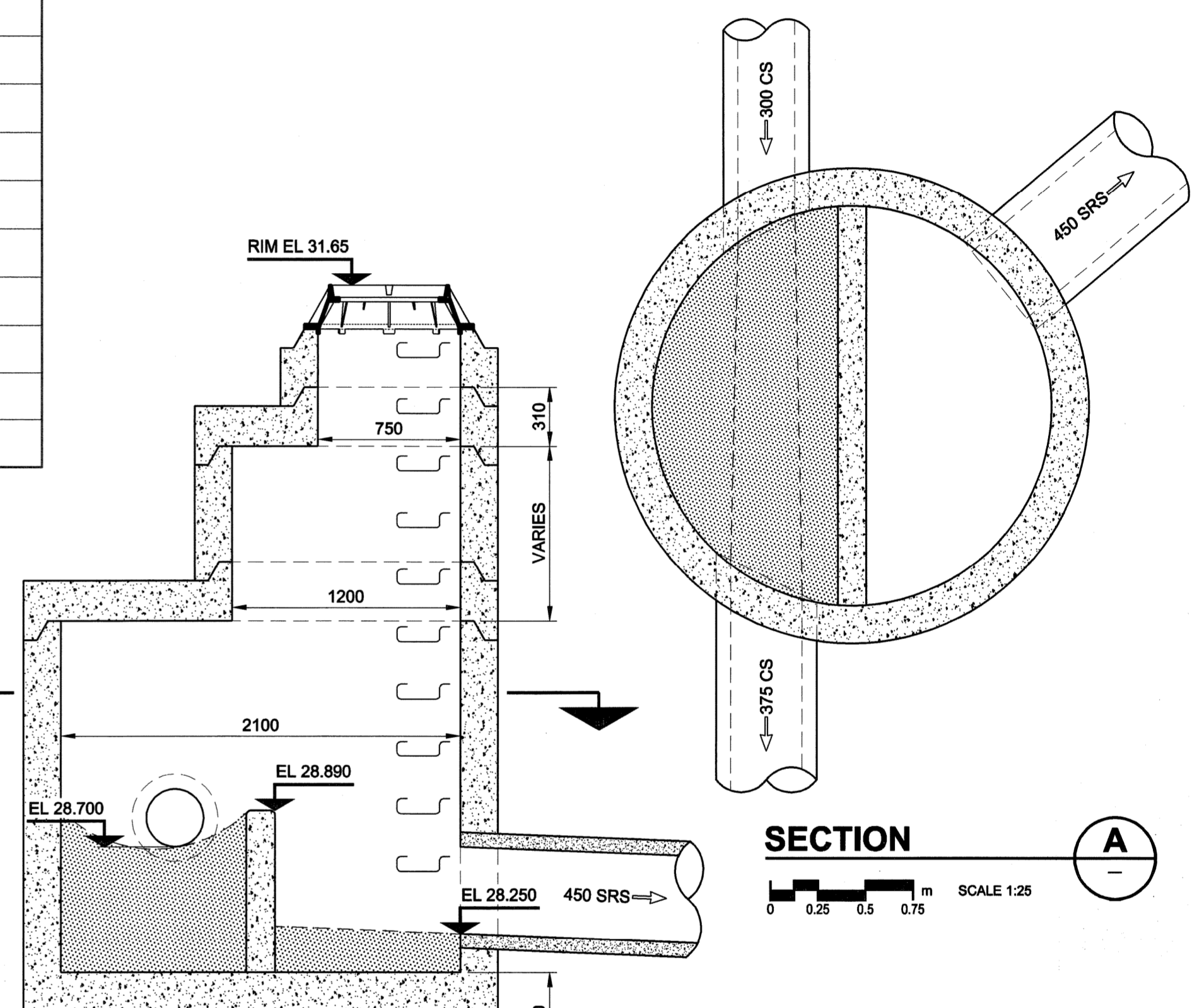
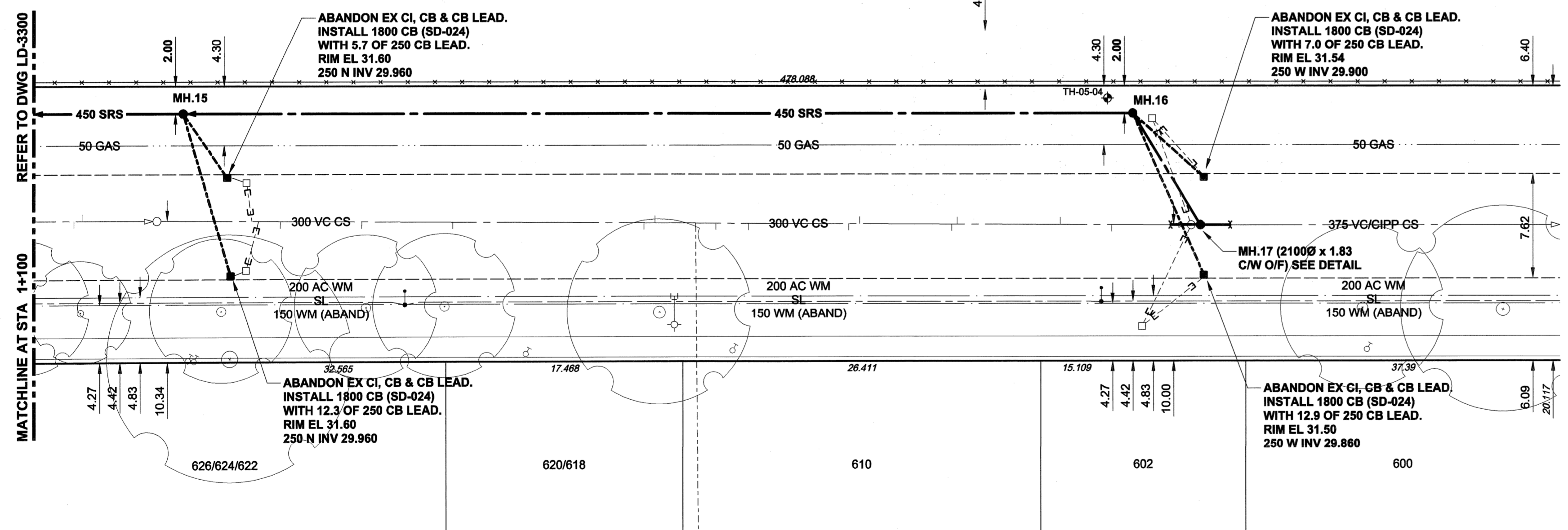
D SIZE 22" x 34" 559mm x 864mm

PLOT: 0603/11 12:31:46 PM

UMA FILE NAME: D265-177-02\_01-C-0007\_RX.dwg Saved By: dlane



CHAINAGE ALONG S PL  
ROSS AVENUE



MANHOLE 17 OVERFLOW DETAIL

SCALE 1:25  
TYPICAL MANHOLE REQUIREMENTS AS PER SD-010

- CONSTRUCTION NOTES:
1. FOR DETAILED TEST HOLE INFORMATION, SEE SPECIFICATION.
  2. THE LOCATION OF ALL SERVICES IS TO BE CONFIRMED IN THE FIELD.
  3. INSTALL NEW SEWERS AND CATCHBASIN LEADS BY TRENCHLESS METHODS WHEREVER POSSIBLE.
  4. RENEW/REHABILITATE CATCHBASINS & RENEW CATCHBASIN LEADS WHERE NOTED.

**WARNING**  
IF POWER EQUIPMENT OR EXPLOSIVES ARE TO BE USED FOR EXCAVATION ON THIS PROJECT, THE CONTRACTOR MUST:  
1) NOTIFY THE GAS COMPANY OF THE PROPOSED LOCATION OF EXCAVATION.  
2) TAKE PRECAUTION TO AVOID DAMAGE TO GAS COMPANY INSTALLATIONS.  
SEE PROVINCIAL REGULATION 140/92 FOR DETAILS

150 mm WM		150 mm WM		CURB STOP		150 mm WM		150 mm WM	
+	WATERMAIN	+	WATERMAIN	+	REDUCER	+	WATERMAIN	+	WATERMAIN
+	HYDRANT	+	HYDRANT	+	VALVE	+	HYDRANT	+	HYDRANT
+	VALVE	+	VALVE	+	COUPLING	+	VALVE	+	VALVE
+	300 mm LDS	+	300 mm LDS	+	ANODE	+	300 mm LDS	+	300 mm LDS
+	250 mm WWS	+	250 mm WWS	+	HYDRO	+	250 mm WWS	+	250 mm WWS
○	MANHOLE	○	MANHOLE	○	MTS	○	MANHOLE	○	MANHOLE
□	CATCH BASIN	□	CATCH BASIN	○	GAS	○	CATCH BASIN	○	CATCH BASIN
△	CURB INLET	△	CURB INLET	○	TESTHOLE	○	CURB INLET	○	CURB INLET
▭	CULVERT	▭	CULVERT	○	LAMP STANDARD	○	CULVERT	○	CULVERT
—	PIPE ABANDONMENTS	—	PIPE ABANDONMENTS	○	TREE	○	PIPE ABANDONMENTS	○	PIPE ABANDONMENTS
+	SURVEY BAR	+	SURVEY BAR	○		○	SURVEY BAR	○	SURVEY BAR
+	EXISTING	+	NEW	+	EXISTING	+	NEW	+	EXISTING

**LOCATION APPROVED**  
UNDERGROUND STRUCTURES  
SUPR. U/G STRUCTURES DATE COMMITTEE  
NOTE: LOCATION OF UNDERGROUND STRUCTURES AS SHOWN ARE BASED ON THE BEST INFORMATION AVAILABLE. BUT NO GUARANTEE IS GIVEN THAT ALL EXISTING UTILITIES ARE SHOWN OR THAT THE GIVEN LOCATIONS ARE EXACT. CONFIRMATION OF EXISTENCE AND EXACT LOCATION OF ALL SERVICES MUST BE OBTAINED FROM THE INDIVIDUAL UTILITIES BEFORE PROCEEDING WITH CONSTRUCTION.

NO.	REVISIONS	DATE	BY
0	ISSUED FOR CONSTRUCTION	06/03/08	ADL

DESIGNED BY	GEB	CHECKED BY	ADL
DRAWN BY	ADL	APPROVED BY	<i>[Signature]</i>
HOR. SCALE	1:250	RELEASED FOR CONSTRUCTION	<i>[Signature]</i>
VERT. SCALE	1:50	DATE	02/05/14

**APEGM**  
Certificate of Authorization  
UMA Engineering Ltd.  
No. 256 Expiry: April 30, 2006

PROFESSIONAL'S SEAL  
PROVINCE OF MANITOBA  
REGISTERED PROFESSIONAL ENGINEER  
A. NAGY  
March 13, 2006

**THE CITY OF WINNIPEG**  
WATER AND WASTE DEPARTMENT

**ALEXANDER/BANNATYNE**  
COMBINED SEWER RELIEF  
CONTRACT 2A

ROSS AVENUE  
80m EAST OF SHERBROOK STREET  
TO 285m WEST OF ISABEL STREET

SHEET 7 OF 21  
CITY DRAWING NUMBER  
LD-3301

**METRIC**  
WHOLE NUMBERS INDICATE MILLIMETRES  
DECIMALIZED NUMBERS INDICATE METRES

BID OPPORTUNITY NO. 132-2006