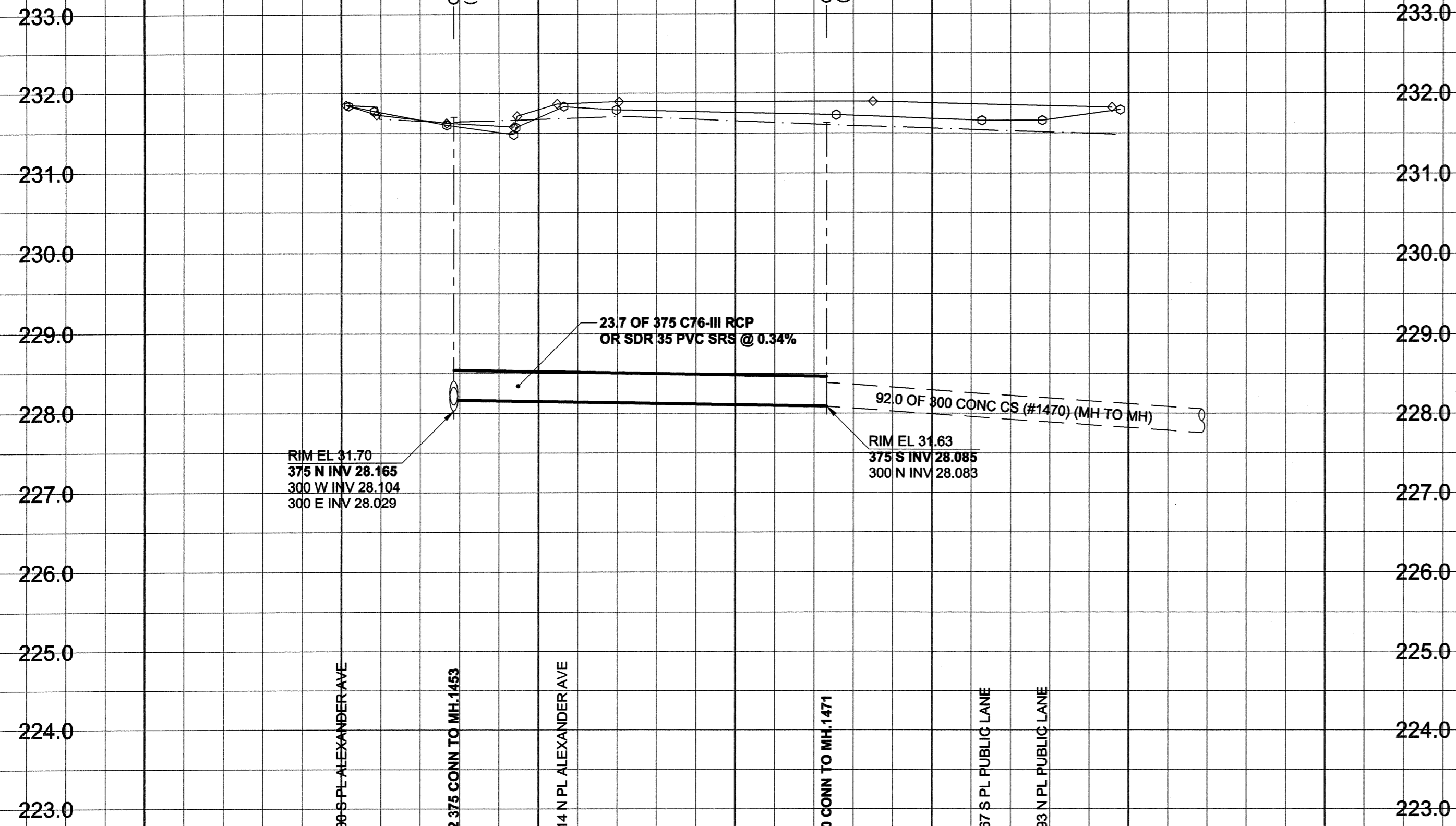


D SIZE 22" x 34" (559mm x 864mm)

PLOT: 06/03/11 12:33:07 PM

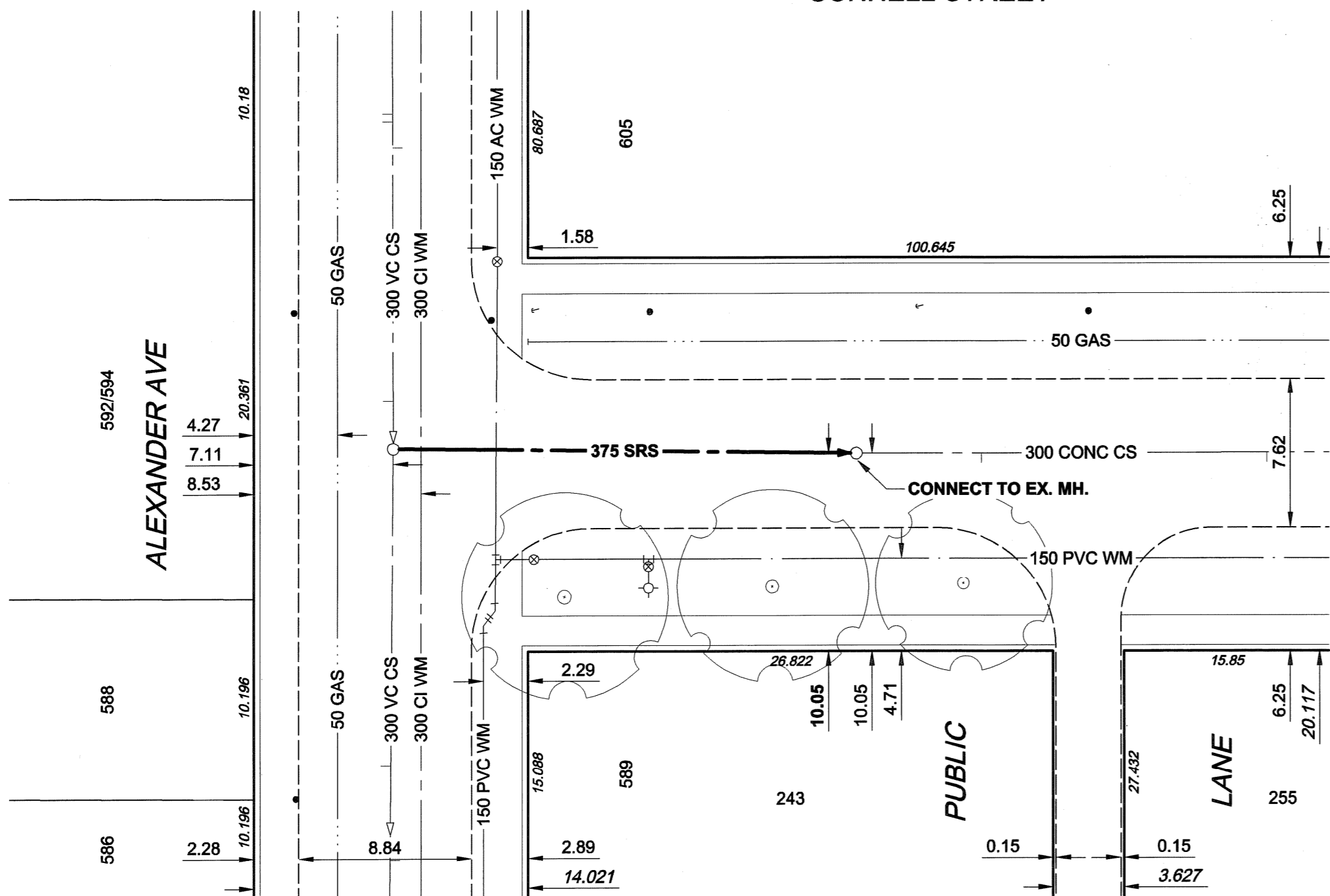
UMA FILE NAME: D265-177-02_01-C-0012_RX.dwg Saved By: dlane

EXISTING FEATURES



CHAINAGE ALONG E PL

GUNNELL STREET



WARNING

IF POWER EQUIPMENT OR EXPLOSIVES ARE TO BE USED FOR EXCAVATION ON THIS PROJECT, THE CONTRACTOR MUST:
 1) NOTIFY THE GAS COMPANY OF THE PROPOSED LOCATION OF EXCAVATION.
 2) TAKE PRECAUTION TO AVOID DAMAGE TO GAS COMPANY INSTALLATIONS.
 SEE PROVINCIAL REGULATION 140/92 FOR DETAILS

150 mm WM	WATERMAIN	150 mm WM	CURB STOP	150 mm WM	WATERMAIN	150 mm WM
	HYDRANT		REDUCER		HYDRANT	
	VALVE		COUPLING		VALVE	
	LAND DRAINAGE SEWER		ANODE		LAND DRAINAGE SEWER	
	MANHOLE		HYDRO		WASTE WATER SEWER	
	CATCH BASIN		MTS		PAVEMENT CROWN	
	CURB INLET		GAS		N/W PROPERTY LINE	
	CULVERT		TESTHOLE		S/E PROPERTY LINE	
	PIPE ABANDONMENTS		LAMP STANDARD		N/W GUTTER	
	SURVEY BAR		TREE		S/E GUTTER	
	LEGEND - PLAN					
	LEGEND - PLAN				LEGEND - PROFILE	

LOCATION APPROVED
 UNDERGROUND STRUCTURES

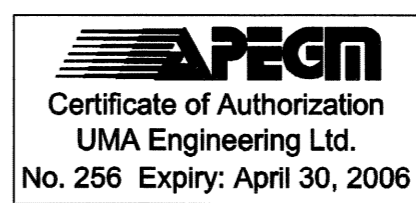
BM 36-010 Tbl. in S. wall of Dufferin School,
 ELEV 232.172m 545 Alexander Ave., 2.4m W. of
 S.E. Cor. of Bldg.

DATE

NOTE:
 LOCATION OF UNDERGROUND STRUCTURES AS SHOWN ARE BASED ON THE BEST INFORMATION AVAILABLE. BUT NO GUARANTEE IS GIVEN THAT ALL EXISTING UTILITIES ARE SHOWN OR THAT THE GIVEN LOCATIONS ARE EXACT. CONFIRMATION OF EXISTENCE AND EXACT LOCATION OF ALL SERVICES MUST BE OBTAINED FROM THE INDIVIDUAL UTILITIES BEFORE PROCEEDING WITH CONSTRUCTION.

NO.	ISSUED FOR CONSTRUCTION	06/03/08	ADL
0	ISSUED FOR CONSTRUCTION	06/03/08	ADL
	REVISIONS	YY/MM/DD	BY

METRIC
 WHOLE NUMBERS INDICATE MILLIMETRES
 DECIMALIZED NUMBERS INDICATE METRES



- CONSTRUCTION NOTES:**
- FOR DETAILED TEST HOLE INFORMATION, SEE SPECIFICATION.
 - THE LOCATION OF ALL SERVICES IS TO BE CONFIRMED IN THE FIELD.
 - INSTALL NEW SEWERS AND CATCHBASIN LEADS BY TRENCHLESS METHODS WHEREVER POSSIBLE.
 - RENEW/REHABILITATE CATCHBASINS & RENEW CATCHBASIN LEADS WHERE NOTED.

BID OPPORTUNITY NO. 132-2006

DESIGNED BY	GEB	CHECKED BY	DATE
DESIGNED BY	GEB	CHECKED BY	DATE
DRAWN BY	ADL	APPROVED BY	DATE
HOR. SCALE	1:250	RELEASED FOR CONSTRUCTION	DATE
VERT. SCALE	1:50		

PROFESSIONAL'S SEAL
 A. NAGY
 REGISTERED PROFESSIONAL ENGINEER
 CONSULTANT DRAWING NO. 12
 D265-177-02-01

THE CITY OF WINNIPEG
 WATER AND WASTE DEPARTMENT

ALEXANDER/BANNATYNE
 COMBINED SEWER RELIEF
 CONTRACT 2A
 GUNNELL STREET
 ALEXANDER AVENUE
 TO 60m SOUTH OF LOGAN AVENUE

SHEET 12 OF 21
 CITY DRAWING NUMBER
 LD-3306
 REV 0